

Accessibility of York Regional Forest Trails

**Presentation to York Region
Accessibility Advisory Committee**

Ian Buchanan

February 25, 2009





Accessibility of York Regional Forest Trails – report back requested November, 2008

Overview

- ❑ Planned accessibility initiatives
- ❑ Current accessibility initiatives
- ❑ Implementation of Universal Trail Assessment Protocol (UTAP)
- ❑ Development of a fully accessible trail

Planned Accessibility Initiatives

- 2008 – Staff identified four initiatives:
 - Implementation of the Universal Trail Assessment Protocol (UTAP)
 - Improved marketing of Nature's Classroom program
 - Review of Regional Forest publications
 - Review of Regional Forest buildings

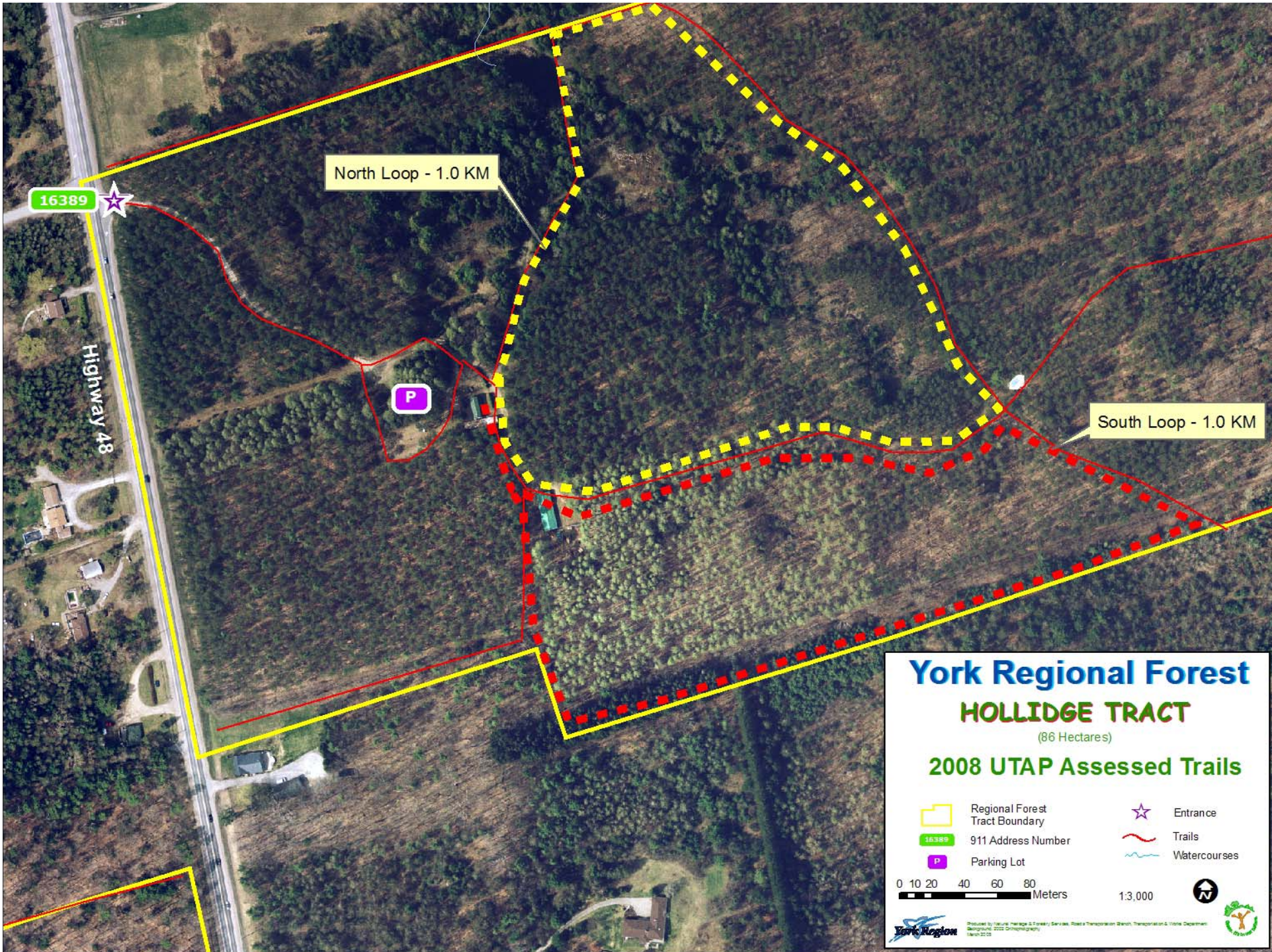
Current Accessibility Initiatives

- **UTAP trails assessment**
 - Completed for two trail loops – implementation
- **Regional Forest info and communications**
 - Public displays will be reviewed and updated in 2009
 - Others reviewed as publications reprinted
- **Regional Forest buildings**
 - Overall assessment of buildings, including accessibility in discussion







Current Accessibility Initiatives

- Universal Trail Assessment Protocol (UTAP) – Hollidge Tract Pilot – trail assessment complete
 - Assessment based on trail characteristics (grade, cross slope, width, surface, trail length)
 - Partnership between York Region and Oak Ridges Trail Association





York Regional Forest
HOLLIDGE TRACT
 (86 Hectares)
2008 UTAP Assessed Trails

-  Regional Forest Tract Boundary
-  911 Address Number
-  Parking Lot
-  Entrance
-  Trails
-  Watercourses

0 10 20 40 60 80 Meters 1:3,000

Produced by: Nature Heritage & Recreation Services, Parks, Transportation, Beach, Transportation & Waste Department
 Background: 2002 Orthophotography
 March 2008

North Loop

Hollidge Tract

Trail Length 0.6 mi (1.0 km)

Loop trail

Varying surface trail

Cumulative Gain 30 ft (9 m)
Elevation Change Loss 41 ft (12 m)

Trail Uses



Hiking



Cross Country
Skiing

Hazards and Obstructions



Root
2 in.



Noxious
Plants



Typical Grade is 2.1%

4% of the trail is between 8% and 10%
85 ft (26 m) is between 10% and 10%
6% grade is a standard ramp.



Typical Cross Slope is 1.1%

2% of the trail is between 5% and 6%
79 ft (24 m) is between 5% and 6%



Typical Tread Width is 65 in (166 cm)

Tread Width ranges from 24 in (60 cm) to 178 in (451 cm)
Minimum Clearance 31 in (80 cm)



Trail Surface is Vegetation - Natural

29% of the trail is Firm or better
2385 ft (727 m) of the trail is Soft or worse

Trailhead Location

Adjacent to the parking lot



Trail
Access
Information

Warning: Trail conditions may have changed since this trail was assessed. Temporary obstructions (e.g. fallen trees or landslides) may not have been mapped. Maximum grades and cross slopes may vary.

Obstructions less than or outside the tread area wide by high were not measured. Minimum clearance boundaries were at least high.

This report has been generated by TrailWare which has been created by Beneficial Design, Inc.

Universal Trail Assessment Protocol (UTAP) - status

- ❑ Two trails in Hollidge Tract assessed in 2008
- ❑ Review parking accessibility implications
- ❑ Signs scheduled for installation in summer 2009
- ❑ Monitor use
- ❑ Set targets for other applications
e.g. ORTA 15km by 2009, 30 km by 2014, all new trails... (% vs target)

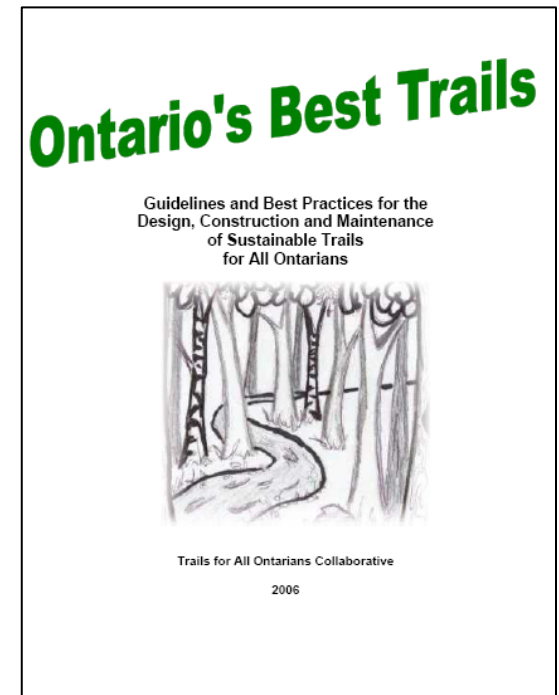
Suggestion: strive for 2 fully accessible trails (YRAAC November 26th, 2008)

- ❑ Fully accessible trails – definition?
- ❑ Discussions with other jurisdictions and consultant - ongoing
- ❑ Regional Forest Advisory Team - supportive

YRAAC Suggestion: strive for 2 fully accessible trails (November 26th, 2008)

NEXT STEPS:

- ❑ Review pending AODA Built Environment Standards (have Version 2 Draft)
- ❑ Parking and trail considerations
- ❑ Demonstrate continuing progress towards removing barriers



Thank You

Questions?