



York Region Official Plan - December 2009 Recommendation to Adopt

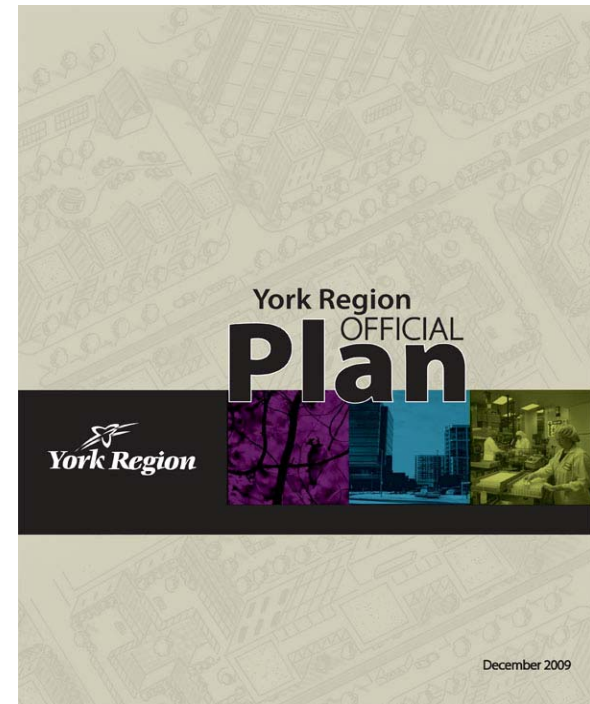
Planning and Economic Development Committee
December 2, 2009



Before Committee Today

1. Regional Official Plan
2. Annotated version of ROP with changes from June 2009 Draft
3. Submissions and staff analysis

Recommendation: To adopt ROP





Process To Date

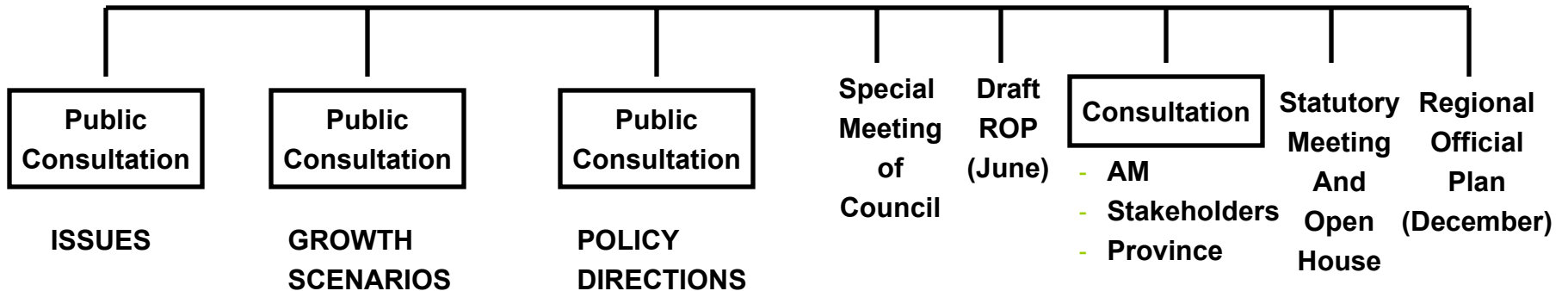


2006

2007

2008

2009





Highlights of Process

- ❑ Over 100 Town Hall, Stakeholder Meetings
- ❑ Presentations to Local Municipalities
- ❑ Contacted 1400 on mailing list
- ❑ Technical Advisory Committee plus individual meetings with Local Municipal Staff
- ❑ 60 Background reports to Council
- ❑ Meetings with the Province
- ❑ First Nations Meeting
- ❑ Extensive use of York Region Website and summary brochures





Submissions

- 160 Submissions received.
 - Local Municipalities 9
 - Land Owners, Developers, Consultants & Solicitors 127
 - Members of the Public 19
 - Government & Public Agencies 26
 - Special Interest Groups 10
- Each submission has a staff analysis sheet attached.
- Each submittor has been informed.



Key Policy Revisions

- ❑ Increased emphasis on Economic Vitality
- ❑ Shift GTA West Corridor north in Vaughan
- ❑ Prepare an Archaeological Resource Management Plan
- ❑ Expand Accessibility policies



Key Policy Revisions

- ❑ Greenlands and Natural Heritage
 - ❑ Natural Environment policies and mapping have been clarified
 - ❑ Specific criteria would determine if a Woodland is “Significant”
- ❑ Greenbelt and ORM Review 2015
 - ❑ Potential adjustments to Greenbelt for employment lands
 - ❑ ORM adjustment to recognize sensitive area in SW Newmarket



Key Policy Revisions Sustainable Communities

- Requirement for LEED changed to focus on
 - Community design criteria for new communities and Centres
 - Energy and Water Efficiency performance standards in new buildings





Key Policy Revisions Affordable Housing

- ❑ 25% Affordable Housing would include housing for people with disabilities and seniors
- ❑ 35% affordable housing in Centres and revised to key development areas.
- ❑ Second Suites are “encouraged” not “required”



Key Policy Revisions Agriculture

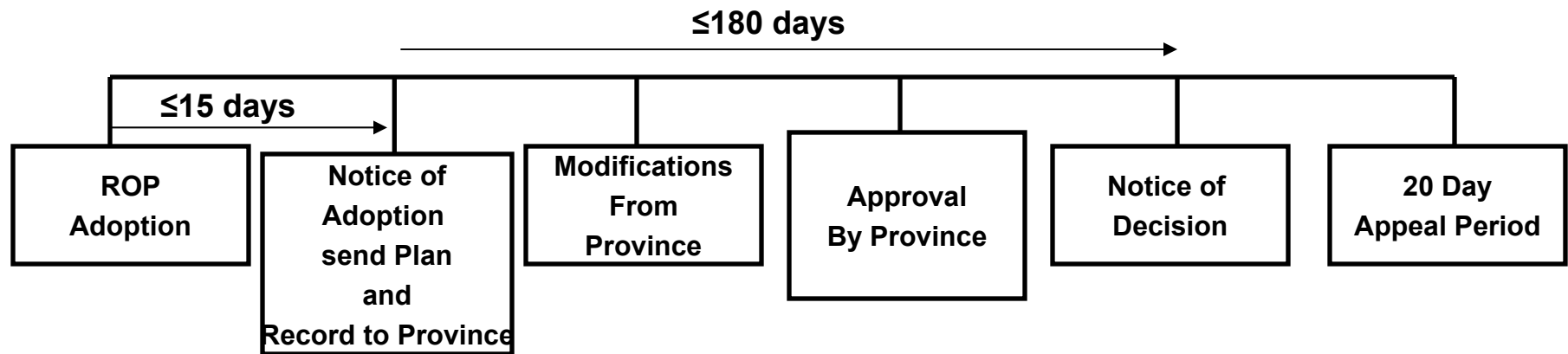
- Emphasis on “local food production”
- Map 8 revisions have been made to the Holland Marsh Specialty Crop Area and to include additional Rural Areas



Key Policy Revision Urban Boundary Expansion

- ❑ Potential Urban Boundary Expansions continue to be shown conceptually on Map 1.
- ❑ Staff continue to work with East Gwillimbury, Markham and Vaughan to determine the exact areas.
- ❑ A separate ROP Amendment will be brought forward in early 2010.
- ❑ Careful phasing policies are included to ensure orderly step by step development.

Next Steps

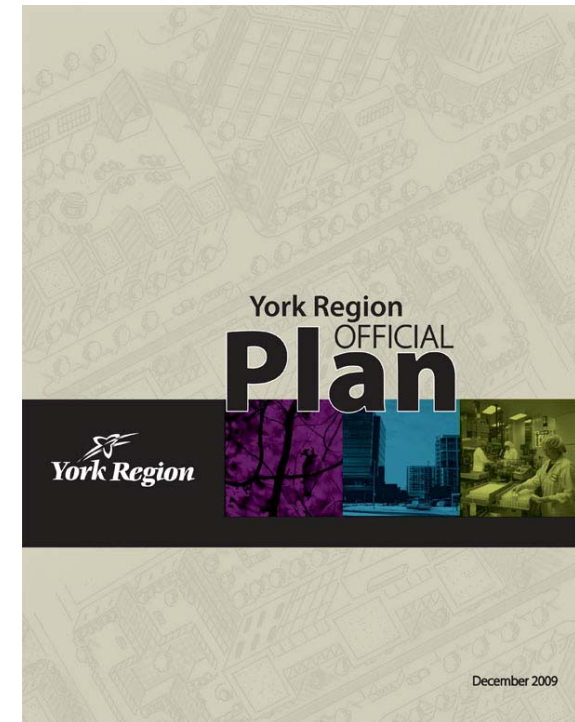


- ❑ 180 day Provincial Approval period
- ❑ 20 day Appeal period following Minister's decision



Conclusions

- ❑ Forward looking and progressive Plan
- ❑ Conforms to Provincial Growth Plan
- ❑ Integrated with Infrastructure Master Plans
- ❑ Careful balance of policies
- ❑ Practical and Prudent
- ❑ Towards Sustainability





Recommendations

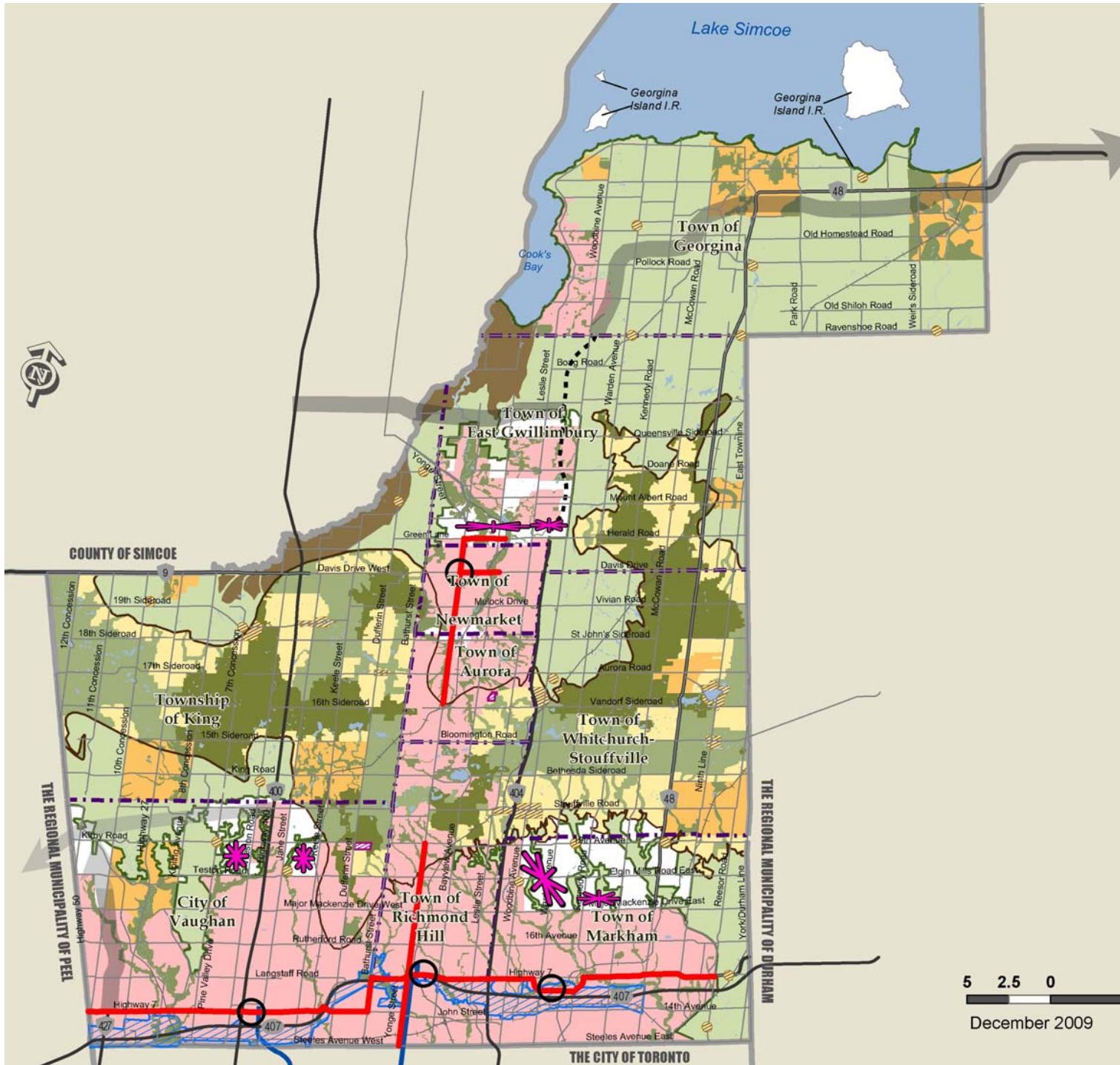
Recommendation

- ❑ Adopt the York Region Official Plan
- ❑ Give notice of adoption as per *Planning Act*

MAP 1

REGIONAL STRUCTURE

-  Regional Centre
-  Regional Corridor
-  Subway Extension
-  Urban Area
-  Potential Urban Expansions
Location, Size and Phasing to be Determined
-  Towns and Villages
-  Regional Greenlands System (Schematic, See Map 2)
-  Oak Ridges Moraine Conservation Plan
Oak Ridges Moraine Boundary
-  Natural Core Area Designation
-  Natural Linkage Area Designation
-  Countryside Area Designation / Hamlet
-  Greenbelt Plan
Greenbelt Plan Area Boundary
-  Greenbelt Protected Countryside / Hamlet
-  Holland Marsh Specialty Crop Area
-  Parkway Belt West Plan
-  Ministers Decision on ORMCP Designation Deferred
-  Provincial Highways
Existing
-  Controlled Access Highway
Under Construction
-  Proposed
-  Conceptual - Alignment Not Defined
-  Municipal Boundary
-  Regional Boundary



Produced by: Geomatics
Planning and Development Services Department
© Copyright, The Regional Municipality of York, November, 2009

© Copyright, The Regional Municipalities of Durham and Peel, County of Simcoe, City of Toronto
© Queen's Printer for Ontario 2003-2009. Includes Greenbelt and Oak Ridges Moraine Boundaries and Water Features

5 2.5 0

December 2009