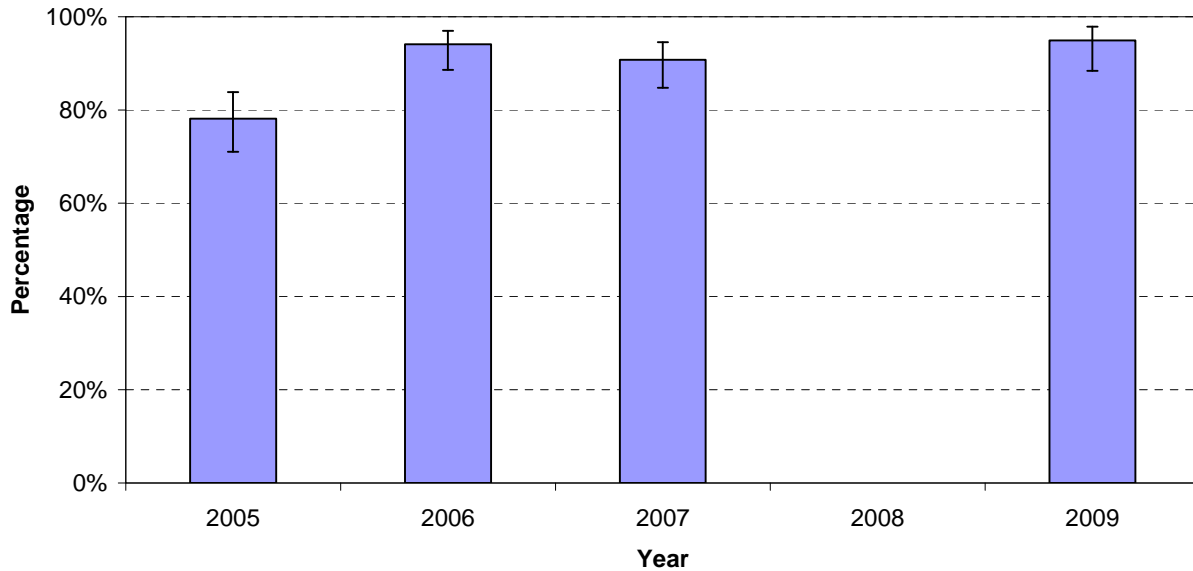


## Booster Seat Use

This summary focuses on the percentage of households with a child aged 4 to 7 years who usually travels in a booster seat and always travels in the back of the vehicle.

Ontario Public Health Standards, Chronic Diseases and Injuries Program Standards, Assessment and Surveillance – Req 1.

### Households With a Child (4-7 years) Who Usually Travels in a Booster Seat and Always Travels in the Back of the Vehicle, 2005-2009



Data Source: Rapid Risk Factor Surveillance System, January 2005 – December 2009. York Region data were not collected in 2008.

#### Interpretation:

- In 2009, 95% ( $\pm 7$ ) of households in York Region with a child aged 4 to 7 years indicated that the child usually travels in a booster seat and always travels in the back seat.
- The 2009 result shows a statistically significant increase from the 78% ( $\pm 6$ ) of York Region households in 2005 that indicated regular use of a booster seat in the back seat of the vehicle. The 2009 percentage of households though, is statistically similar to data collected since 2006.

**Data Source:** Rapid Risk Factor Surveillance System (RRFSS), [January 2005 – December 2009 (variables bst\_1, bst\_2, bst\_3, bst\_4)]. For more information on RRFSS, visit <http://www.rfss.ca/>

Adults represent individuals aged 18 years or older. This telephone survey was only administered in English, using a random digit dialling methodology and data are weighted for probability of selection in households of different size. Survey indicators based on self-reported information and may be subject to biases, such as recall bias or social desirability bias, or result in high non-response.

┆ and  $\pm$  represents the 95% confidence interval, meaning 19 times out of 20 the results will fall within this range. Confidence intervals are reported as equal, though this is not always the case as the estimate approaches zero or 100%.

'Don't know' and 'refused' responses are excluded if less than five (5) percent.