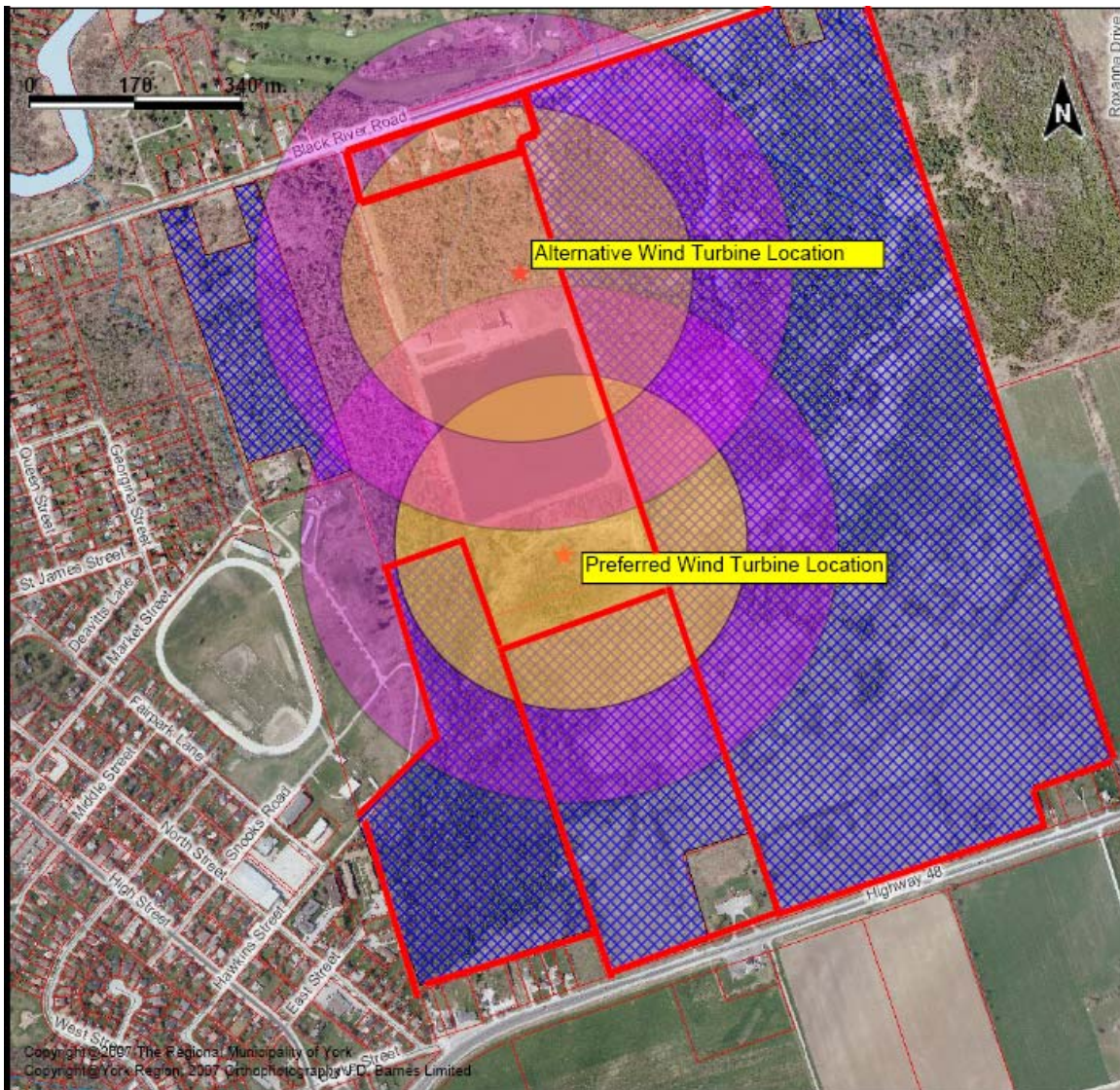







Preliminary Conceptual Drawing



Legend

-  Development Applications
-  Wind Turbine
-  400 metre Radius
-  250 metre Radius
-  Outlined Areas of Significant Impact

Note:

Setbacks are stated to be 400 metre from nearest residential dwelling to meet common municipal dwelling setbacks. Sound separation distances that are acceptable are generally greater than 250 metres. At 250 metres at the strictest noise limit.