

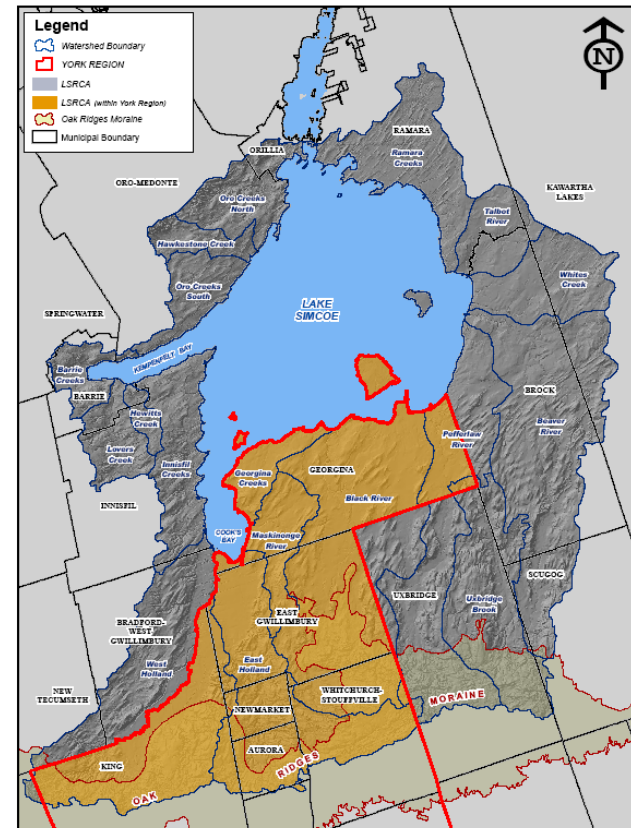
# Lake Simcoe Region Conservation Authority



**Presentation to York Region  
Finance and Administration Committee  
January 8, 2009**

# LSRCA Watershed

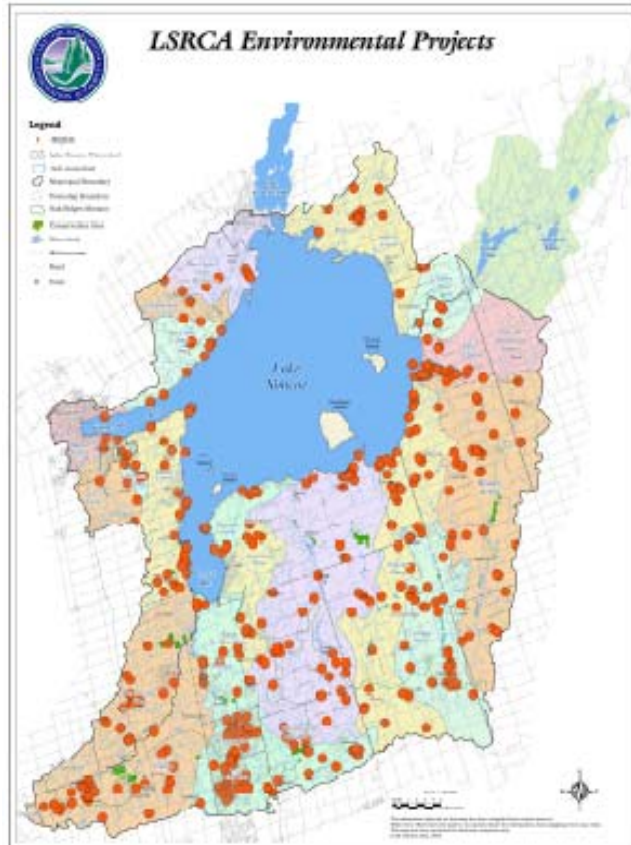
- 3,500 square km watershed
- 35 rivers and creeks
- 23 municipalities
- \$200 million recreational resource
- source of drinking water for 8 municipalities
- assimilates waste from 15 treatment facilities



# Working with our partners



# The State of the Watershed



- More than 950 projects since 1989

Some recent encouraging signs

- *phosphorus levels decreased*
- *dissolved oxygen increased*
- *lake trout surviving to adulthood*

The landscape is changing as land use pressures increase

The watershed must accommodate more infrastructure

- *surface water run-off*
- *effluent discharge*
- *drinking water supply*

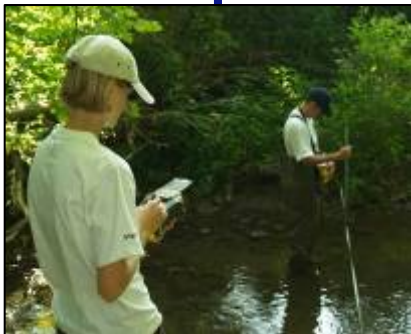
A healthy watershed needs:

- protection so that, with growth, balance remains sustainable*
- restoration to undo damage of neglect*



# Programs & Services

## Science & Research



## Protection & Restoration



BEFORE



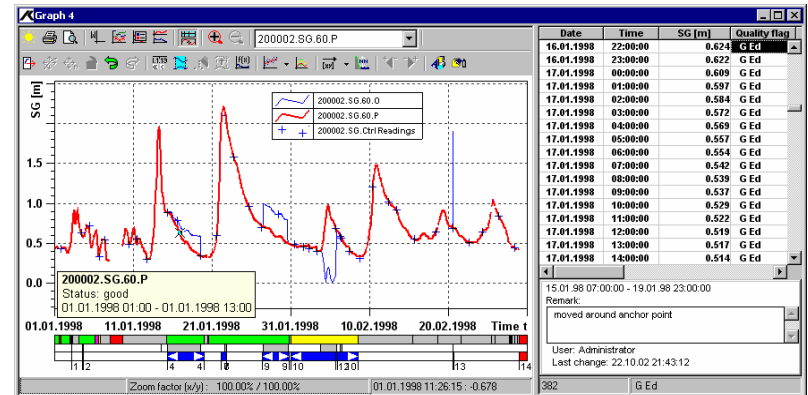
AFTER

## Education & Outreach



# Science & Research

- Watershed health monitoring
- Floodline / natural hazard mapping
- Natural heritage mapping & systems
- Subwatershed plan: implementation and monitoring
- Source water protection
- Projects and studies:
  - Near shore monitoring, Atmospheric deposition, Phoslock, Assimilative Capacity Study, Stormwater retrofit opportunities, Natural Capital Ecosystem Services Valuation
- Watershed report card



# Protection & Restoration

- Environmental Planning & Regulations
- Erosion & Flood Control Structures
- Flood Forecasting & Warning
- Phoslock Pilot Program
- Water Quality Improvement Program
- Land Securement & Management
- Stewardship & Forestry



Phoslock application at Cane Parkway, Newmarket



Phoslock Pilot Program



# Education & Outreach

- Place-based environmental education
  - Professor E.A. Smith Education Centre
  - \$600,000 operation self-supported by generated revenues
  - Nearly 8,000 students per year
- Educational Outreach and Engagement
  - In schools and at community events
  - Nearly 4,000 students per year in school classrooms
  - Approximately 20 major events per year
  - Public forums, workshops and open houses



Education Centre



In-class education



# Key Accomplishments to date - 2008

- **128 restoration projects within York**
  - An additional 93 projects approved
  - Total value exceeding \$2.1M (Includes \$900K for 2 storm water management ponds approved to proceed in Aurora)
  - Municipal dollars leveraged with landowner contributions / LSCF/ LSCUF
- **LSEMS – Lake Simcoe Protection Act**
  - Co-chairing the provincial Stakeholder Advisory Committee
  - Direct support to the provincial Science Advisory Committee
  - Support municipal process and local program delivery
- **Watershed planning**
  - Initiated Natural Heritage Phase II in East Gwillimbury
  - Completion of the Lake Simcoe Stormwater Management and Retrofit Opportunities report
  - Completion of draft comprehensive basin wide plan
- **Watershed monitoring**
  - Web access to data from monitoring stations
  - Development of virtual gauges for all sub watersheds in York Region
- **Priority greenlands securement**
  - Partnered with York Region, Nature Conservancy of Canada and landowners to secure 98.4 ha of environmentally sensitive lands



# Special Capital Funding

Special Capital Programs	2008 funding approved	2009 (incl. in approved Regional capital budget)	2010 projected	2011 projected	2012 projected
LSEMS - Lake Simcoe Protection Act	\$112,719	\$113,680	\$117,090	\$120,603	\$124,221
Basin-Wide Initiatives	\$72,015	\$173,678	\$178,888	\$184,255	\$189,782
Water Quality Improvement Program (LSWQIP-LEAP)	\$419,577	\$432,164	\$440,186	\$462,196	\$485,305
Water Monitoring	\$298,948	\$301,212	\$310,249	\$319,557	\$329,143
Natural Hazard Modeling & Mapping	\$20,000	\$20,000	\$20,000	\$20,000	\$20,000
Natural Heritage Mapping & Systems	\$50,643	\$47,367	\$48,788	\$50,251	\$51,759
Flood Forecasting & Warning Network	\$10,958	\$65,623	\$67,592	\$69,620	\$71,709
Subwatershed Plan - Implementation & Monitoring	\$250,000	\$253,000	\$256,036	\$259,108	\$262,218
Conservation Area Management Planning & Coordination	\$63,006	\$62,399	\$64,271	\$66,200	\$68,186
Conservation Authorities Moraine Coalition	\$5,000	\$5,000	\$5,000	\$5,000	\$5,000
Program Information Management	--	--	\$74,126	\$76,350	\$78,640
Natural Partnership - Reforestation	\$50,000	\$50,000	\$50,000	\$50,000	\$50,000
<b>Summary of proposed funding</b>	<b><u>\$1,352,866</u></b>	<b><u>\$1,524,123</u></b> **	<b><u>\$1,632,226</u></b>	<b><u>\$1,683,140</u></b>	<b><u>\$1,735,963</u></b>

\*\* Contained in total Regional 2009 capital budget approved by council on December 18, 2008;  
 Funding is enhanced significantly by leveraging federal funding available;  
 Supports the ability to plan for and provide input into the Lake Simcoe Protection Act and Plan



# Lake Simcoe Clean Up Fund & Federal \$

- \$30M available to be expended over 5 years
- 2 phases per fiscal year
- Total approved projects in Phase I of 2008 - \$3.6M
- Total approved projects in Phase I of 2008 in York Region - \$1.3M
- Total federal funds in Phase I of 2008 supporting projects in York Region - \$568,595



Walter Drive Erosion Control Project  
Georgina



# Operating Budget

## Programs and services include:

- Continued implementation of PSAB Tangible Capital Asset reporting requirement
- Environmental plan review including Department of Fisheries and Oceans level III, and storm water management
- Issuance of permits
- Enforcement of regulations
- Technical advice regarding water quality/ quantity issues
- Flood forecasting and warning
- Education Programs
- Administrative services



# 2009 Proposed General Levy

<b>Year</b>		<b>Proposed Amount</b>	<b>Percent Change</b>
2008	Approved	\$1,611,240	--
2009	Proposed (total inclusive of debt reduction on forgivable loan)	\$1,694,492	5.1%
2010	Projected	\$1,782,740	5.2%
2011	Projected	\$1,876,282	5.2%
2012	Projected	\$1,975,437	5.3%



# 2009 Net Operating Pressures

	<u>\$ 000</u>
Enhancements	\$ -
Growth	\$ -
Annualization	\$ 17
Mandatory/Legislative	\$ -
Efficiencies	\$ (-)
Base	\$ 66
<b>Total</b>	<u><b>\$ 83</b></u>



# Priority Highlights for 2009

- Continued input and support: Lake Simcoe Protection Act and Plan
- Phosphorus management studies and planning
- Lake research including near-shore monitoring project
- Development of growth-related policies (following ACS)
- Drinking Water Source Protection
- Conservation Area Management Planning
- Water Quality Improvement Program



**Thank you for your continued  
partnership and support**

