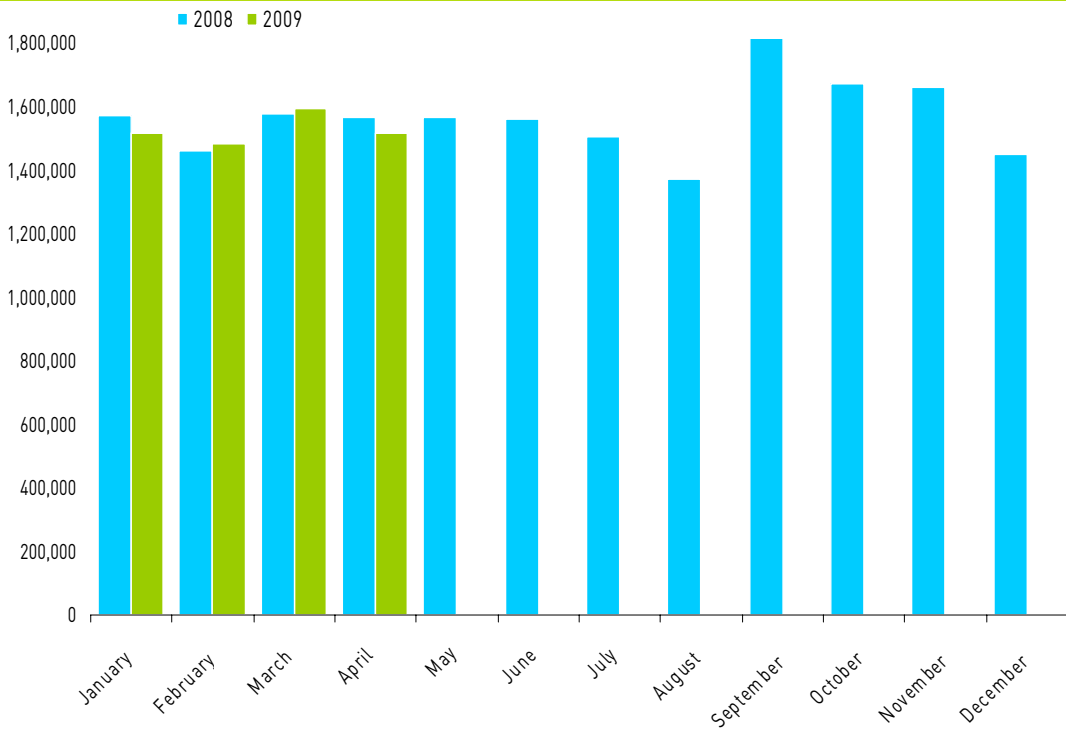


YRT/Viva

2009 Revenue Ridership Summary

Conventional Services including Contracted TTC Services North of Steeles



Month	2008*	2009	Month Change ['08 vs '09]	YTD Change	Avg Wkday Rev. Ridership 2009 ¹
January	1,573,246	1,519,002	-3.4%	-3.4%	58,337
February	1,459,347	1,480,919	1.5%	-1.1%	66,747
March	1,578,458	1,596,601	1.1%	-0.3%	63,358
April	1,564,100	1,516,370	-3.1%	-1.0%	62,331
May	1,565,440				
June	1,559,930				
July	1,508,293				
August	1,372,945				
September	1,912,514				
October	1,671,223				
November	1,663,465				
December	1,451,614				
YTD	18,846,646	6,112,892			

NOTES:

- * 2008 revenue ridership adjusted for 2009 comparison.
- York U Strike Nov 6, 2008 to January 29, 2009

YORK REGION TRANSIT / VIVA - MONTHLY RIDERSHIP SUMMARY
April 2009

Rev. 26may2009

Apr-09	21 weekdays, 4 Saturdays, 5 Sunday/Holidays
Apr-08	22 weekdays, 4 Saturdays, 4 Sunday/Holidays

Markham, Stouffville

YRT Route #	Route Name	2008			TOTAL BOARDINGS (MONTH)			TOTAL BOARDINGS (YEAR TO DATE)			Avg Wkday Boardings	Avg Sat Boardings	Avg Snhl Boardings	Notes
		2008 Avg Wkday Boardings	Avg Sat Boardings	Avg Snhl Boardings	2008	2009	Percentage (08vs09)	2008	2009	Percentage (08vs09)				
1*	Highway 7	1,898	788	331	45,601	41,625	-8.7%	184,412	155,167	-15.9%	1,732	811	268	Rider migration to Viva purple
2	Milliken	2,204	804	352	52,918	51,001	-3.6%	208,984	198,053	-5.2%	2,057	916	579	3 new PM peak period trips - July 2008; La Rocca bakery moved (summer '08)
2A	14th Ave	671	0	0	14,399	16,672	15.8%	52,517	61,022	16.2%	780	0	0	New peak period service via Riverwalk/Box Grove By-Pass - May 2008; 2 new peak period trips - Sept 2008
3*	Thornhill - York U.	1,296	356	319	30,856	37,657	22.0%	134,398	138,356	2.9%	1,642	330	245	General growth
8	Kennedy Rd	1056	420	267	25,854	26,989	4.4%	98,151	97,335	-0.8%	1,125	395	252	Stable growth
9*	Ninth Line	82	0	0	1,779	2,342	31.6%	6,385	8,281	29.7%	109	0	0	New peak period service - July 2008; Route extension - May 2008; Connections to Viva
15	Stouffville Local	67	0	0	1,427	1,972	38.2%	6,389	7,810	22.2%	92	0	0	New peak period service - July 2008
18	Bur Oak	736	89	0	16,114	18,525	15.0%	62,174	72,747	17.0%	857	79	0	Connections to Viva purple: 1 new AM trip - Sept 2008; General corridor growth
40	Unionville Local	472	111	66	10,986	12,368	12.6%	42,207	46,171	9.4%	540	101	76	General growth
41	Markham Local	394	99	68	9,249	7,435	-19.6%	34,129	30,600	-10.3%	311	108	65	Rider migration to Markham GO Shuttle
201	Markham GO Shuttle	102	0	0	2,157	2,363	9.6%	8,547	9,797	14.6%	112	0	0	General growth
202	Unionville GO Shuttle	127	0	0	2,704	2,876	6.4%	10,322	10,819	4.8%	136	0	0	General growth
300	Business Express	257	0	0	5,510	5,865	6.4%	21,382	23,055	7.8%	275	0	0	General growth, new development along Commerce Valley Dr W
301	Markham Express	394	0	0	8,389	8,348	-0.5%	33,046	33,397	1.1%	390	0	0	Stable ridership
302	Unionville Express	187	0	0	4,001	4,059	1.4%	16,378	15,988	-2.4%	190	0	0	Stable ridership
303	Bur Oak Express	119	0	0	2,552	3,356	31.5%	9,962	12,313	23.6%	157	0	0	Route extension along Bur Oak Ave to McCowan Rd - July 2008; 1 new am trip - Dec 2008; 1 new pm trip - Feb 2009
522	Markham Community Bus	36	32	0	901	892	-1.0%	3,017	3,373	11.8%	38	30	0	Stable ridership
TTC	Markham Total	10,098	2,699	1,403	235,397	244,345	3.8%	932,400	924,284	-0.9%	10,543	2,770	1,485	
TTC 17A	Birchmount	230	0	0	4,830	5,250	8.7%	19,090	19,830	3.9%	250	0	0	Stable ridership,
TTC 24D, 224B/C/D	Vic Park North (Woodbine)	824	74	38	17,790	17,731	-0.3%	70,521	74,138	5.1%	824	43	42	Rt 224D/B extended - July 2008; Wk peak frequency improvements (July, Sept 2008)
TTC 25D *	Don Mills	1,187	0	0	24,927	19,845	-20.4%	98,521	86,715	-12.0%	945	0	0	Rider migration to Route 90 - Leslie
TTC 68B	Warden North	1,002	376	174	23,416	21,765	-7.1%	87,914	89,362	1.6%	928	328	193	Decreased business activity
TTC 102D	Markham Rd	667	153	119	15,214	17,062	12.1%	58,982	70,963	20.3%	734	227	148	General corridor growth; connections to Viva purple; wk midday frequency improvements - Sept 2008
TTC 129A	McCowan North	2,861	1,472	814	70,039	60,005	-14.3%	267,337	274,033	2.5%	2,471	1,191	670	Decrease in employment travel
TTC (Markham) Total		6,771	2075	1145	156,216	141,658	-9.3%	602,365	615,041	2.1%	6,152	1,789	1,053	
Markham & TTC Total		16,869	4,774	2,548	391,613	386,003	-1.4%	1,534,765	1,539,325	0.3%	16,695	4,559	2,538	

Vaughan, King

4/4A*	Major Mackenzie	2,351	879	648	57,191	55,869	-2.3%	199,108	205,838	3.4%	2,187	1,215	819	Stable ridership; route extension to MS Hosp - Nov '08
5 *	Clark	1,694	484	0	38,354	33,384	-13.0%	149,228	137,482	-7.9%	1,404	753	0	Rider migration to Routes 23 & 88
7 *	Martin Grove	734	64	0	16,209	15,600	-3.8%	68,027	61,525	-9.6%	690	118	0	Rider migration to Route 10
10	York U. (Woodbridge)	269	56	72	6,461	8,577	32.8%	31,829	31,439	-1.2%	353	51	125	General growth, rider migration from Route 10
11	Woodbridge	111	82	54	3,039	2,842	-6.5%	8,717	11,805	35.4%	114	29	19	Stable ridership
12	Pine Valley	312	56	0	7,044	7,310	3.8%	27,033	26,952	-0.3%	313	119	0	New ridership from new limited service routing via Four Valley Dr - Feb 2009
13	Islington Ave	395	110	0	9,106	7,085	-22.2%	34,003	29,167	-14.2%	295	131	0	Rider migration to Routes 10 & 85
20	Jane	1,676	1,172	530	44,198	45,535	3.0%	176,953	166,444	-5.9%	1,654	1,168	821	Stable ridership
22*	King City	276	50	0	6,117	6,386	4.4%	22,582	23,776	5.3%	292	55	0	General growth
23*	Thornhill Woods	681	0	0	14,761	15,605	5.7%	57,745	65,390	13.2%	724	0	0	General growth; rider migration from Route 5 & TTC Route 160
27	Highway 27	164	59	19	3,776	1,286	-65.9%	18,129	6,036	-66.7%	55	18	3	Decreased ridership through the Royal Group employment area
28	Zenway-Hwy 27	12	0	0	252	501	98.8%	252	2,847	1029.8%	22	0	0	New route implemented April 2008
77*(excl.BT)	Hwy 7 - Centre St	2,702	1,379	0	64,870	70,977	9.4%	237,666	270,267	13.7%	2,971	1,521	0	General corridor growth
99*	Yonge South	4,065	1,936	1,182	100,487	73,609	-26.7%	384,723	295,470	-23.2%	2,835	1,872	1,039	Peak period frequency decreased Jun'08; Rider migration to Viva blue/pink
360*	Maple Express	246	0	0	5,627	9,577	70.2%	29,570	32,525	10.0%	431	0	0	General growth
TTC	Vaughan Total	15,688	6,327	2,505	377,492	354,143	-6.2%	1,445,565	1,366,963	-5.4%	14,340	7,050	2,826	
TTC 35-D	Jane ^{Bl}	1,852	435	0	40,632	28,020	-31.0%	161,111	127,612	-20.8%	1,290	235	0	Decreased ridership through the Jane/Concord employment area
TTC 37-D	Islington	176	0	0	3,696	2,384	-35.5%	14,608	11,521	-21.1%	114	0	0	Decreased ridership through the Pine Valley employment area
TTC 105, 105-B	Dufferin N.	1,577	617	323	37,200	34,320	-7.7%	147,840	157,085	6.3%	1,435	585	371	Rider migration to Route 88; new 105-B branch introduced May 2008
TTC 107-C/D/B/F	Keele N.	3,381	854	453	76,682	59,504	-22.4%	304,201	252,347	-17.0%	2,636	547	392	Decreased ridership through the Keele/Concord employment area
TTC 160	Bathurst N.	838	428	388	21,250	19,764	-7.0%	84,590	80,259	-5.1%	774	405	380	Rider migration to Routes 23 & 88
TTC 165-D/F	Weston Road N.	1,522	1,192	499	39,225	26,322	-32.9%	156,570	127,593	-18.5%	1,079	532	309	Decreased ridership through the Weston Road employment corridor
TTC (Vaughan) Total		9,346	3,526	1,663	218,685	170,312	-22.1%	868,920	756,415	-12.9%	7,326	2,304	1,452	
Vaughan & TTC Total		25,034	9,853	4,168	596,177	524,455	-12.0%	2,314,485	2,123,378	-8.3%	21,666	9,354	4,278	

* Route crosses municipal boundaries.

Richmond Hill

YRT Route #	Route Name	2008 Avg Wkday Boardings	Avg Sat Boardings	Avg Snhl Boardings	TOTAL BOARDINGS (MONTH)			TOTAL BOARDINGS (YEAR TO DATE)			Avg Wkday Boardings	Avg Sat Boardings	Avg Snhl Boardings	Notes
					2008	2009	Percentage (08vs09)	2008	2009	Percentage (08vs09)				
81	Inspiration	32	n/a	0	96	2,118	n/a	96	6,810	n/a	100	0	0	New route - April 27, 2008
82	Valleymede-Spadina	475	58	0	10,338	9,515	-8.0%	36,776	33,549	-8.8%	442	37	0	Ridership migration to Route 90
83	Trench	934	87	0	20,254	22,721	12.2%	75,501	79,860	5.8%	1,050	94	0	General growth
84	Oak Ridges	245	53	0	5,429	5,146	-5.2%	22,206	15,782	-28.9%	225	100	0	Decrease in ridership caused by detour onto Old Colony Rd
85/85A/85B*	16th Ave/Rutherford	3,190	1,779	981	81,493	92,342	13.3%	271,074	343,987	26.9%	3,706	1,882	980	General corridor growth; rider migration from Route 13
86	Weldrick-Newkirk	811	107	0	17,759	16,138	-9.1%	63,758	58,019	-9.3%	736	115	0	Ridership migration to Viva Blue; decrease in employment travel
87*	Langstaff Local	948	89	0	20,609	20,278	-1.6%	74,800	71,078	-5.0%	929	130	0	Decrease in employment travel
88/88E*	Bathurst	2,216	1,598	1,048	59,355	74,460	25.4%	230,568	283,286	22.9%	2,691	2,337	1,331	General corridor growth, express service implemented - Fall 2008; rider migration from Route 5 & TTC Route 160
589	RH Community Bus	130	106	75	3,529	3,456	-2.1%	14,024	13,901	-0.9%	130	114	54	Stable ridership
90*	Leslie	1172	367	124	27,445	35,667	30.0%	91,351	129,891	42.2%	1,524	562	145	General corridor growth; schedule adjustments - Aug 2008 & Feb 2009; rider migration from TTC Route 25D
91/91A/91E*	Bayview South/Express	4,087	1,618	864	98,076	90,516	-7.7%	376,173	351,591	-6.5%	3,641	1,569	1,251	Decrease in employment travel
240	Mill Pond GO Shuttle	131	0	0	2,795	2,325	-16.8%	11,089	9,599	-13.4%	109	0	0	Ridership migration to Route 83
241	Bev Acres GO Shuttle	87	0	0	1,859	1,480	-20.4%	6,605	6,535	-1.1%	70	0	0	Stable ridership
242	N Richvale GO Shuttle	45	0	0	965	963	-0.2%	3,589	4,748	32.3%	45	0	0	Stable ridership
243	Redstone GO Shuttle	177	0	0	3,744	3,396	-9.3%	15,282	13,162	-13.9%	160	0	0	Decrease in employment travel
244	Beaver Creek Shuttle	n/a	0	0	n/a	834	n/a	n/a	3,422	n/a	38	5	0	New route June 2008 - Replaced 85A service to Beaver Creek area during peak periods
Richmond Hill Total		14,680	5862	3092	353,746	381,355	7.8%	1,292,892	1,425,020	10.2%	15,596	6,945	3,761	

Aurora																
31*	Aurora North	68	54	0	1,657	1,359	-18.0%	9,557	4,778	-50.0%	64	0	0	Ridership migration to Rte 33/33A, Rte operating in Peak Period only to Aurora GO Station		
32	Aurora South	310	86	0	6,999	8,317	18.8%	26,347	30,286	15.0%	380	70	0	General growth		
33/33A	Wellington	346	151	0	8,067	8,230	2.0%	22,133	29,455	33.1%	372	92	0	Ridership migration from Rte 31		
34	Industrial Parkway	32	157	0	1,305	717	-45.1%	3,940	2,062	-47.7%	34	0	0	Ridership migration to Rte 222, route operating in peak periods to Aurora GO and Aurora Shopping Centre		
	Aurora Total	756	448	0	18,028	18,623	3.3%	61,977	66,581	7.4%	850	162	0			
Newmarket, East Gwill., Georgina																
44	Bristol - London	180	60	0	4,120	3,994	-3.1%	15,462	13,996	-9.5%	177	59	0	Dial-a-ride service		
51	Keswick Local	282	61	0	6,298	6,493	3.1%	25,292	22,660	-10.4%	299	41	0	Rider migration to Rte 69		
52*	Holland Landing Loc	265	182	0	6,436	6,142	-4.6%	21,852	21,877	0.1%	267	119	0	Decreased employment travel to Newmarket GO Terminal and Upper Canada Mall		
53	Woodspring-Clearmeadow	187	n/a	27	588	6,700	n/a	588	27,730	n/a	274	81	114	New route - April 27, 2008		
54*	Bayview North	179	47	0	4,071	4,460	9.6%	14,825	15,536	4.8%	197	69	0	General growth		
55/55B	Davis Dr.	1,287	650	461	32,531	30,339	-6.7%	117,923	112,460	-4.6%	1,243	555	341	Decrease in employment travel along Davis Drive		
56	Gorham-Eagle	440	106	120	10,682	12,004	12.4%	39,732	42,542	7.1%	509	123	146	General growth		
57/57A	Mulock Dr.	776	273	137	18,407	15,653	-15.0%	67,258	51,506	-23.4%	692	207	35	Decrease in employment travel along Mulock Drive		
58/58A	Leslie North	108	6	0	2,356	1,719	-27.0%	8,344	7,008	-16.0%	81	0	0	Decrease in employment travel		
GO Rte 69	Sutton GO Bus	215	109	87	5,386	5,126	-4.8%	16,907	16,346	-3.3%	203	90	97	Stable ridership		
98*	Yonge North	768	608	449	21,329	21,044	-1.3%	77,167	78,527	1.8%	804	478	419	Stable ridership		
220	Keswick GO	0	0	0	n/a	234	n/a	n/a	542	na	11	0	0	New route - Feb 2009		
222	Aurora-Nmkt GO Shuttle	36	0	0	777	1,479	90.3%	3,536	5,990	69.4%	70	0	0	Rider migration from Route 34		
223	Newmarket GO Shuttle	20	0	0	427	549	28.6%	2,149	2,415	12.4%	26	0	0	General growth		
520/521	Newmarket Community Bus	50	23	14	1,212	1,240	2.3%	4,928	5,046	2.4%	17	17	11	Stable Ridership		
	Newmarket Total	4793	2125	1295	114,620	117,176	2.2%	415,963	424,181	2.0%	4,853	1,839	1,163			
	YRT SUB-TOTAL	62,132	23,062	11,103	1,474,184	1,427,612	-3.2%	5,620,082	5,578,485	-0.7%	59,660	22,859	11,740			

Viva																
blue*	Yonge Corridor	16,289	11,418	7,614	425,814	391,711	-8.0%	1,624,798	1,564,141	-3.7%	14,977	10,009	7,433	Veolia and York U Strike impacts		
purple*	Highway 7 Corridor	6,285	3,879	2,761	161,309	181,387	12.4%	682,598	669,479	-1.9%	7,179	3,995	2,930	Veolia and York U Strike impacts		
green*	Markham North-South Link	769	0	0	16,153	13,927	-13.8%	66,458	60,304	-9.3%	663	0	0	Decrease in employment travel		
orange*	Vaughan North-South Link	2,547	1,399	1,032	64,233	70,772	10.2%	267,199	256,278	-4.1%	2,920	1,077	1,029	Veolia and York U Strike impacts		
pink*	Finch - Unionville	2,377	0	0	49,913	49,562	-0.7%	195,274	193,281	-1.0%	2,360	0	0	Stable ridership		
	Viva SUB-TOTAL	28,267	16,696	11,407	717,422	707,359	-1.4%	2,836,328	2,743,483	-3.3%	28,099	15,082	11,391			

* Route crosses municipal boundaries.

Tot. Boardings	YRT/VIVA SYSTEM TOTAL	90,399	39,758	22,510	2,191,606	2,134,971	-2.6%	8,456,410	8,321,968	-1.6%	87,758	37,941	23,132
Rev. Boardings	YRT/VIVA SYSTEM TOTAL				1,564,100	1,516,370	-3.1%	6,175,151	6,112,892	-1.0%	62,331		

Notes:

1. System-wide transfer rate is revenue boardings / total boardings =

29.00%

2. Transfer rate has remained the same due to the following:

- a) On-street fare system (evasion, enforcement, maintenance)
- b) Increase in timed-transfers (from 90 to 120 minutes)

G:\Transportation\T23 - YRT Ridership Reports\Ridership\2009\YRT09 Current Ridership Statistics.WORKING FILE with adj unclassd rev.xls\Apr_Boardings_Adjusted

Total Boardings by Division

Division	Boardings	Transfer Rate	Revenue Boardings	Transfer Rate
Div1	205,288	9.6%	145,806	0.408
Div2	135,819	6.4%	96,466	
Div3	212,923	10.0%	151,229	71.0%
Div4	550,390	25.8%	390,916	29.0% transfer rate
Div5	508	0.0%	361	
Div 7	707,359	33.2%	502,404	
Div 11	5,588	0.3%	3,969	
TTC	311,970	14.6%	221,577	
	2,129,845			

2008 Total Average Boardings for this Month

	Weekday	Saturday	Sunday/Hol	Total
Ave Boardings	90,399	39,758	22,510	152,667
% of Total	59	26	15	100

2009 Total Average Boardings for this Month

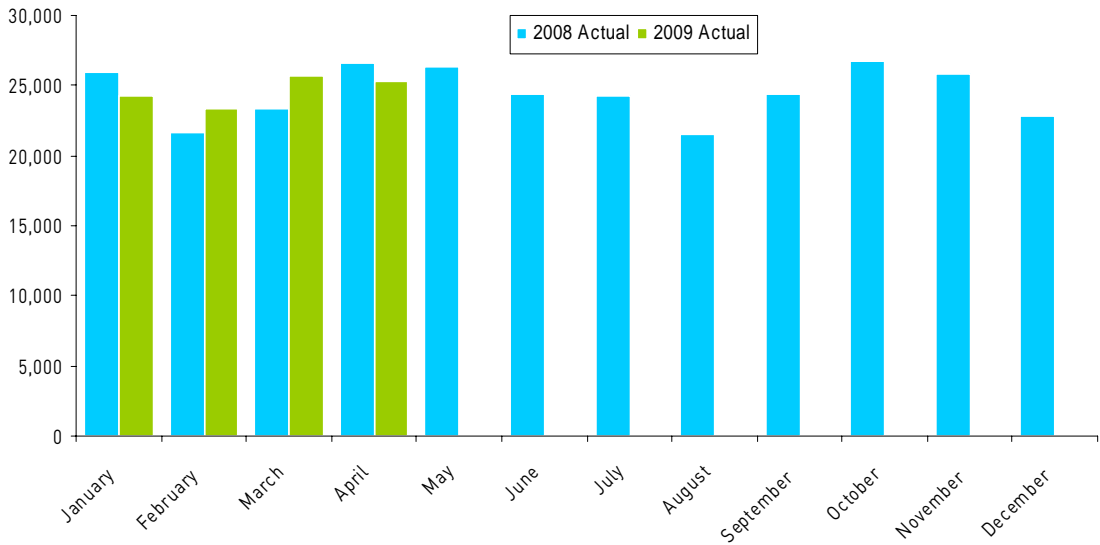
	Weekday	Saturday	Sunday/Hol	Total
Ave Boardings	87,758	37,941	23,132	148,830
% of Total	59	25	16	100

221577

YRT\Viva

2009 Ridership Summary

Specialized Services – Mobility Plus



Month	2008* Ridership	2009 Ridership	Month Change ('08 vs. '09)	Year to Date Change	Avg Wkday Rev Ridership 2009
January	25,930	24,223	-6.5 %	-6.5%	1,019
February	21,601	23,313	7.9%	-0.0%	1,046
March	24,658	25,687	4.2%	1.4%	1,051
April	24,874	25,289	1.7%	1.5%	1,063
May	25,499				
June	25,118				
July	24,178				
August	21,474				
September	24,403				
October	26,034				
November	26,529				
December	23,499				
YTD	293,769	98,512			

NOTES:

- * 2008 Ridership adjusted for 2009 comparison.