

Legend

 Holland Marsh

Land Evaluation Score

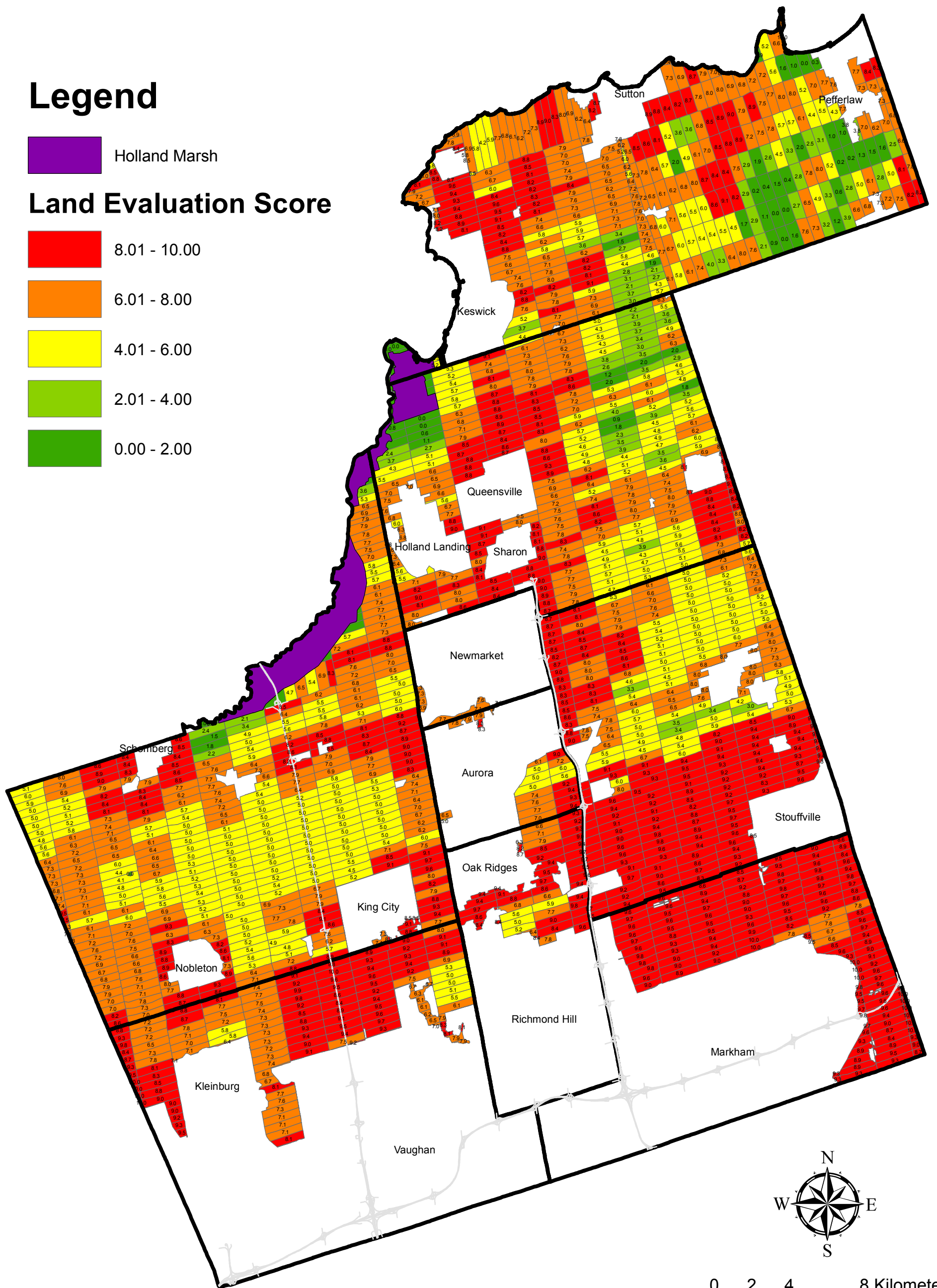
 8.01 - 10.00

 6.01 - 8.00

 4.01 - 6.00

 2.01 - 4.00

 0.00 - 2.00




MAP 2 - LAND EVALUATION RESULT

THE REGIONAL MUNICIPALITY OF YORK
YORK REGION AGRICULTURAL/RURAL LAND REVIEW

August 27, 2009



Legend

 Holland Marsh

Area Review Score

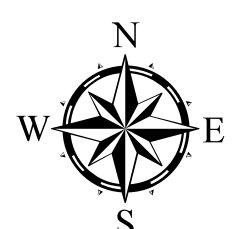
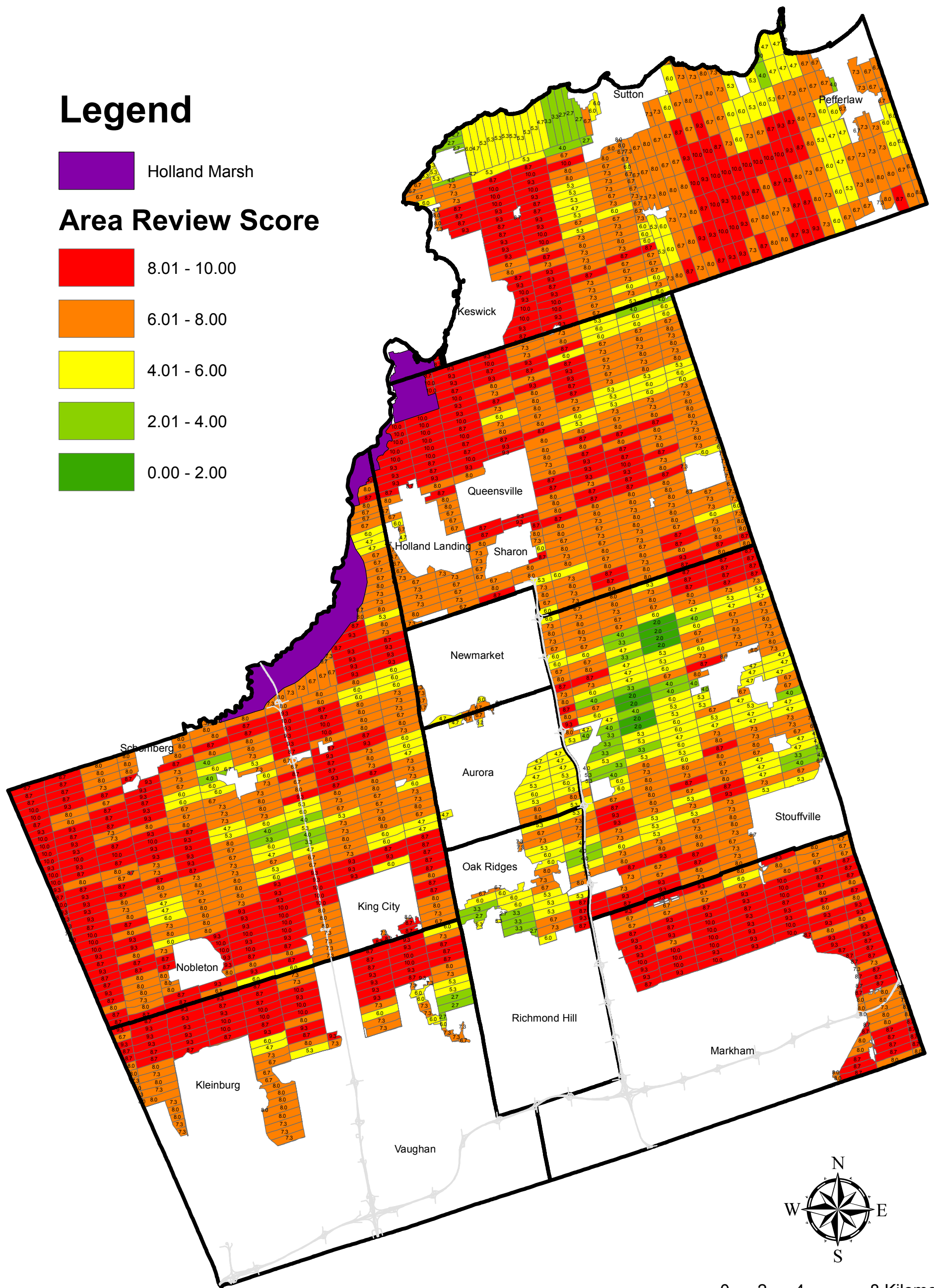
 8.01 - 10.00

 6.01 - 8.00

 4.01 - 6.00

 2.01 - 4.00

 0.00 - 2.00



0 2 4 8 Kilometers


August 27, 2009

MAP 3 - AREA REVIEW RESULT

THE REGIONAL MUNICIPALITY OF YORK
YORK REGION AGRICULTURAL/RURAL LAND REVIEW




Legend


 Holland Marsh

LEAR Score

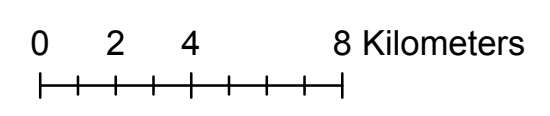
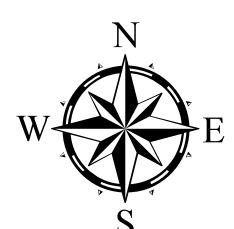
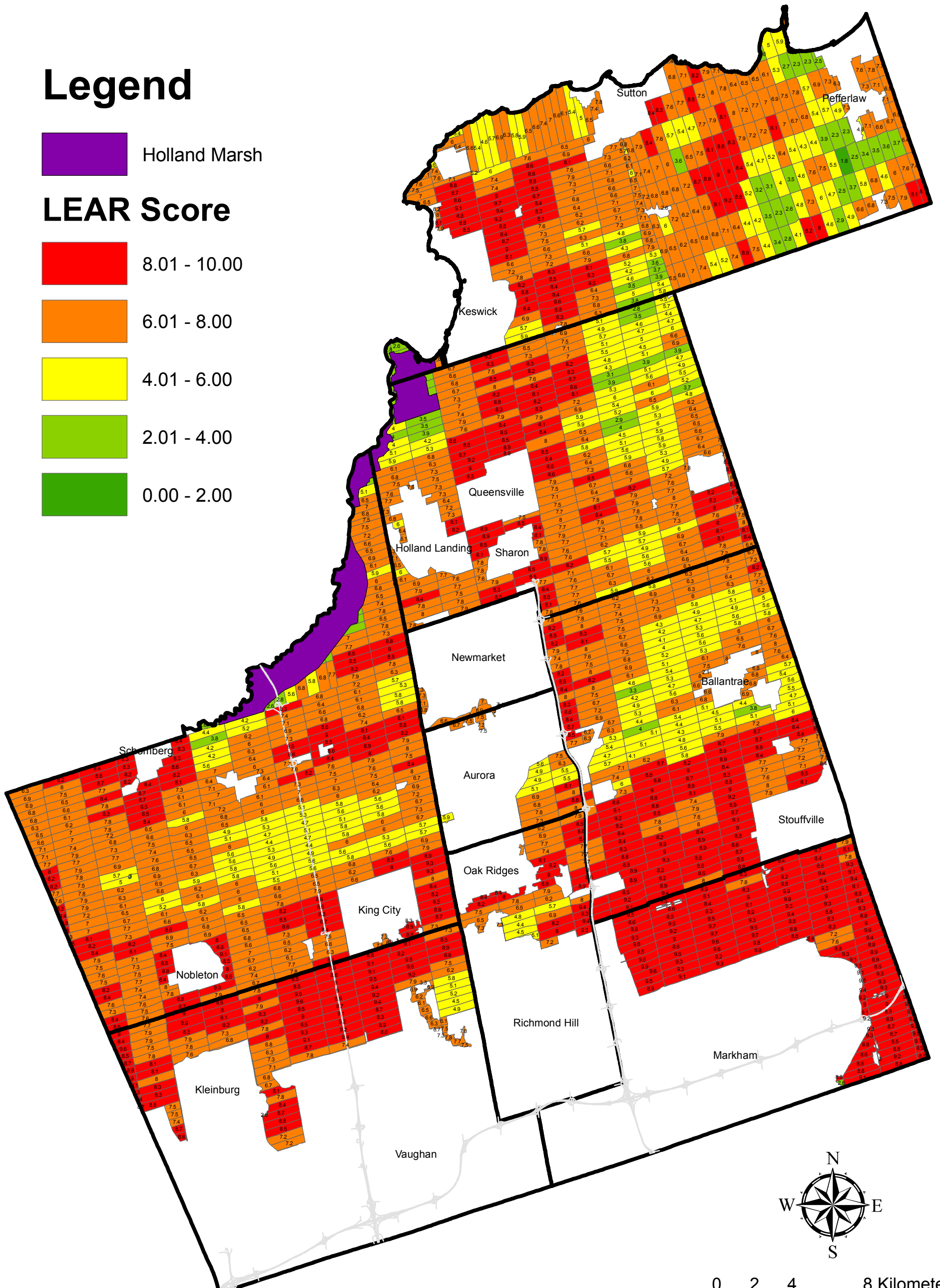
 8.01 - 10.00

 6.01 - 8.00

 4.01 - 6.00

 2.01 - 4.00

 0.00 - 2.00



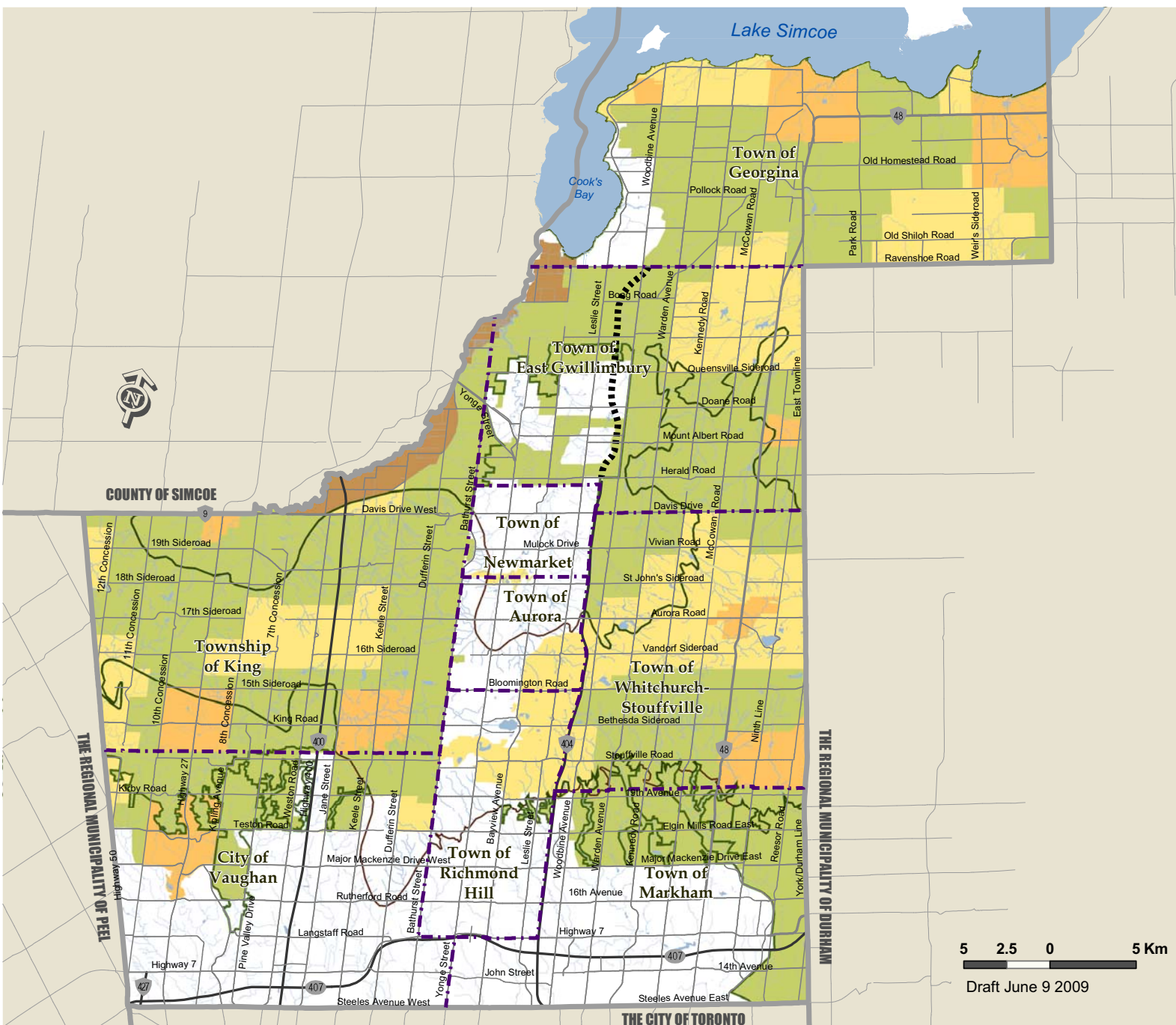
MAP 1 - LEAR RESULT

THE REGIONAL MUNICIPALITY OF YORK
YORK REGION AGRICULTURAL/RURAL LAND REVIEW

August 27, 2009



MAP 8 AGRICULTURAL AND RURAL AREA



- Rural Area
- Agricultural Area
- Specialty Crop Area
- Towns and Villages

- Oak Ridges Moraine Boundary
- Greenbelt Plan Area Boundary
- Provincial Highways
- Existing
- Controlled Access Highway
- Under Construction
- Municipal Boundary
- Regional Boundary
- Watercourse
- Waterbody

Figure 4
Council Attachment



Draft June 9 2009



Produced by: Geomatics
Planning and Development Services Department
© Copyright, The Regional Municipality of York, June, 2009

© Copyright, The Regional Municipalities of Durham and Peel, County of Simcoe, City of Toronto
© Queen's Printer for Ontario 2003-2009, includes Greenbelt and Oak Ridges Moraine Boundaries and Water Features