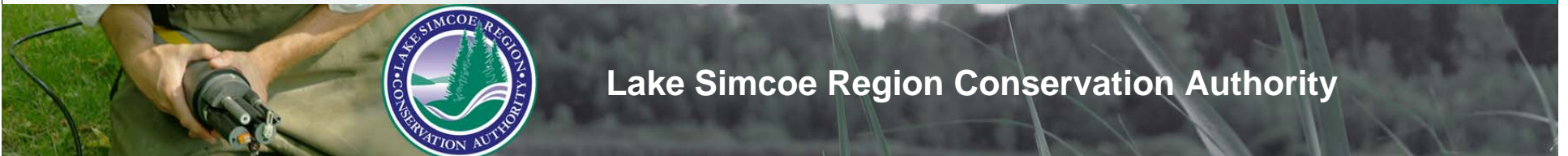


Interpreting the Lake Simcoe Protection Plan

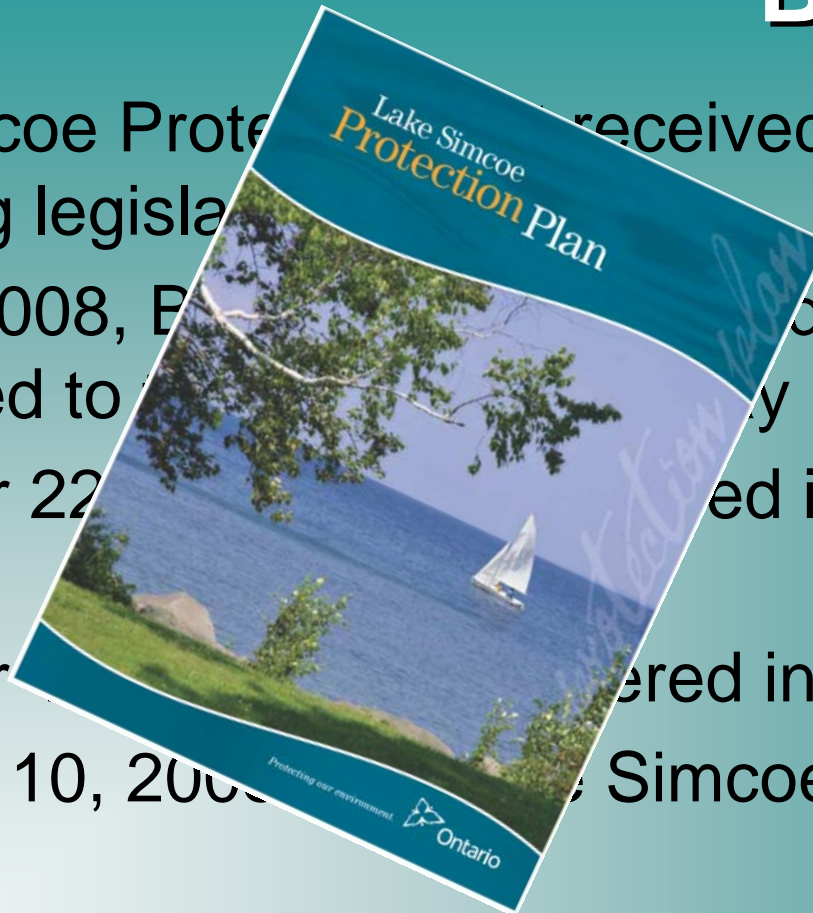
Michael Walters
Director, Watershed Management



Lake Simcoe Region Conservation Authority

Background

- The Lake Simcoe Protection Act received royal assent in 2008, enabling legislative review.
- On June 17, 2008, Bill 107 was introduced for first reading and was posted to the public consultation and review period.
- On September 22, 2008, the Bill moved into second reading.
- On December 1, 2008, the Bill moved into third reading.
- On December 10, 2008, the Lake Simcoe Protection Act became law.
- On June 2, 2009, the Plan was finalized.



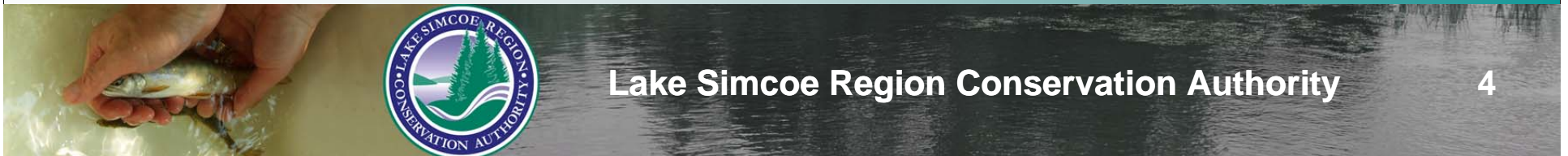
Background

- The LSPP contains 119 policies,
- Municipalities have been assigned the lead responsibility for implementing 34,
- Of the 34, 31 are *Designated Policies*, with the remaining 3 being *Strategic Actions*,
- *Designated polices* are given legal effect under the plan (municipalities must conform with),
- *Strategic Actions*, are not given legal effect but are actions that public bodies should take,
- LSRCOA has lead on three: Tier 2 Water Budgeting, Generic Regulation Expansion and Subwatershed Planning.



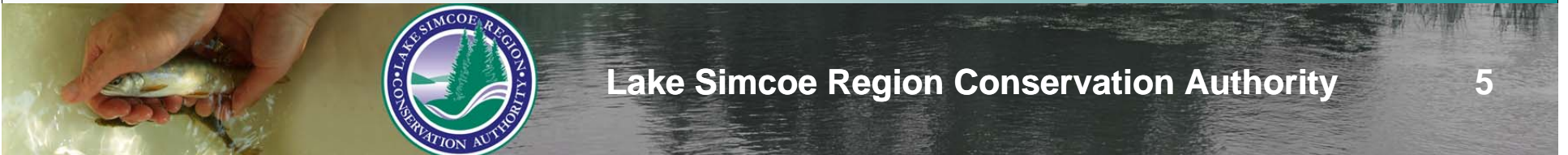
What has been done to date by the Province?

- The Lake Simcoe watershed boundary has been defined for the purpose of the LSPP,
- An Operational Management Committee has been formed, (Provincial agencies and the LSRCA),
- Calls for membership for the Stakeholder and Science Advisory Committee have been held,
- MOE is currently developing the Phosphorus Reduction Strategy including a feasibility analysis of a Phosphorus Trading Program,
- LSRCA met with the MNR regarding the Shoreline Regulations recommendations.



How Can the LSRCA Help?

- Of the 34 recommended policies all are currently being implemented by the Regional Municipality of York or the LSRCA,
- Specifically the Region has already updated the Region of York's Official Plan to conform to the LSPP in three areas.
 - Stormwater Policies,
 - Shoreline Management Policies,
 - Subwatershed Plans.



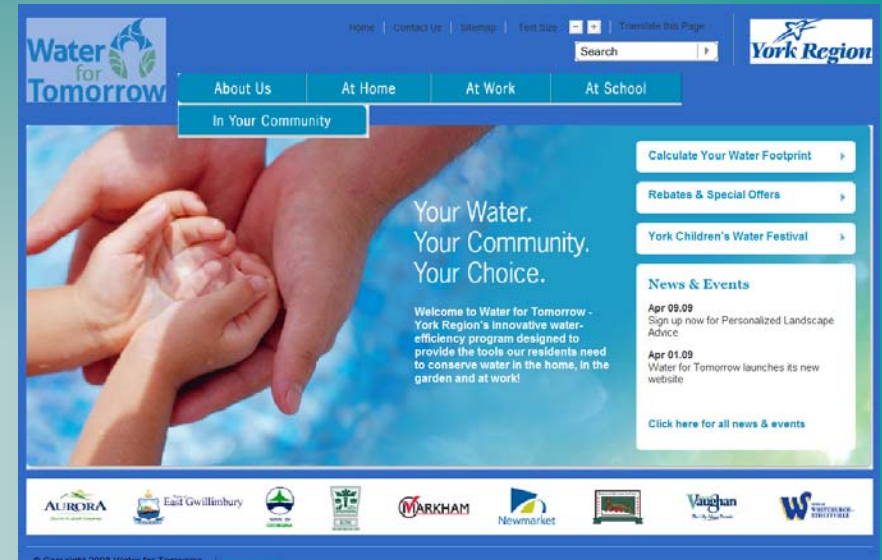
Water Quality

- Stormwater Management Master Plans\Retrofits (Underway by the LSRCA).
- Incorporate stormwater management policies into Official Plans (LSP, etc).
- Invest in and incorporate stormwater management into the Official Plans and Division Agreements.



Water Quantity

- Policies to promote greater water conservation,
- York Region is excluded in the recommendation due to on-going implementation efforts in water conservation.



Shoreline Regulations

- Plan review for development along the Shoreline (Municipality and LSRCA Plan Review Service - MOU),
- Policies re: alteration to lake shoreline and permanent\intermittent streams, (Covered by the Authority Regulation 179/06),
- Encouraging restoration of natural shorelines (LSRCA Stewardship activity),
- LSRCA identified duplications.



Shoreline Regulations

- Key Natural Heritage & Hydrologic Features (Plan Review supported by LSRCA Regulation),
- Settlement Areas (Plan Review supported by LSRCA Regulation),
- Recharge Areas (Completed through Source Water Protection).

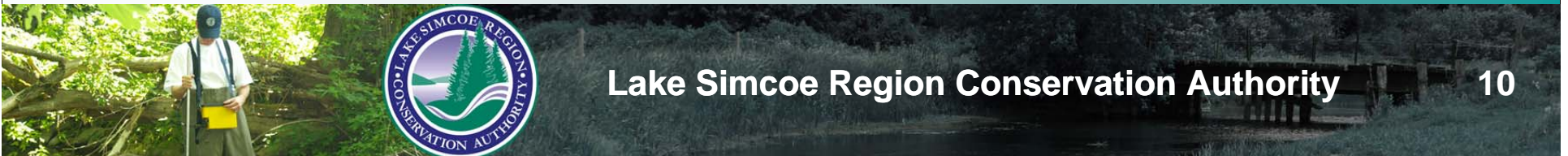


Other Threats and Activities

- Planning policies.

Implementation

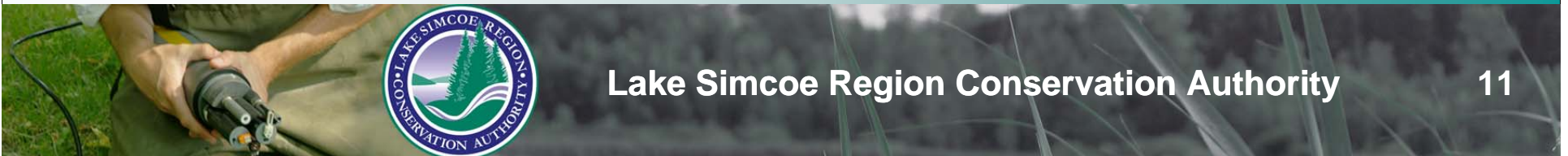
- Conformity exercise of Official Plans with Subwatershed Evaluations,
- LSRCA will continue to work with York Region Planning regarding planning policies to address the LSPP.



Cost to Implements the LSPP

Under consideration at the Authority:

- Negotiating costs for undertaking specific works with the Province,
- Operational costs to deliver planning and changes in the regulation are unknown at this time,
- Definition of roles & responsibilities.



Thank you

for more information
www.lsrca.on.ca

