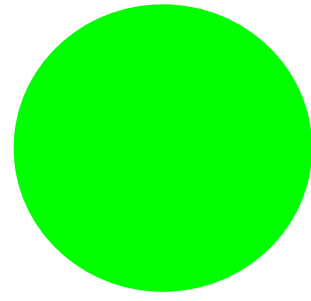
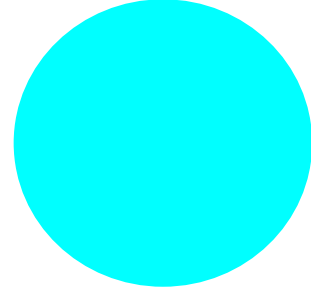


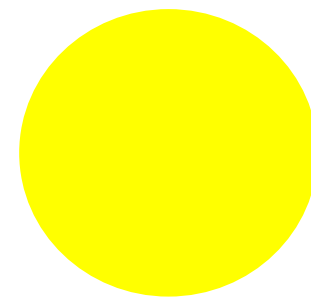
RECOMMENDED STRATEGIES & TIMING: Please Provide Your Input...

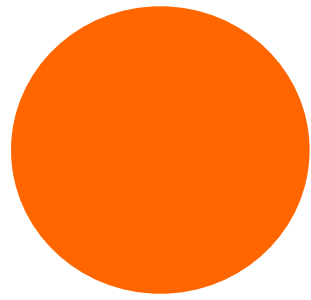


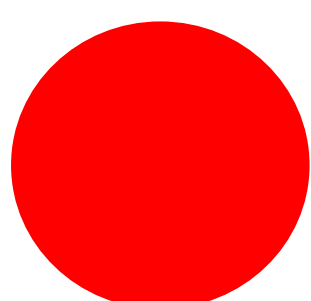
Policy	The Region's recommended time frame for implementation	WHAT DO YOU THINK?
Implement the Regional and municipal Cycling and Pedestrian Master Plan policies and recommendations.	0-2 years	
Adopt a policy for inclusion in the Regional Official Plan which requires local municipalities, particularly those that are urbanized, to achieve the minimum densities to sustain higher order transit and promote Transit Oriented Development.	0-2 years	
Initiate HOV 2+ lanes for all road segments scheduled for widening to 6 lanes.	0-2 years	
Cap road widenings to a maximum of 6 or 7 lanes, including transit lanes.	0-2 years	
Require local municipalities to ensure continuous mid-concession block collector roads are implemented east-west and north-south in all new urban developments.	0-2 years	
Celebrate sustainable transportation success stories through initiatives such as annual awards for volunteers, programs and projects.	0-2 years	
Work with each municipality to plan and implement regular car-free festival days to create a culture of sustainability.	0-2 years	
Enhance the environmental assessment process in York Region by incorporating supportive policies and strategies.	0-2 years	

 Now (0-2 years)

 3-5 yrs

 5-10 yrs

 10+ yrs

 Do Not Consider

RECOMMENDED STRATEGIES & TIMING: Please Provide Your Input...



Policy	The Region's recommended time frame for implementation	WHAT DO YOU THINK?
Enhance natural heritage features throughout York Region by incorporating supportive policies and strategies.	0-2 years	
Partner with local municipalities to plan for mixed land uses (retail, institutional and commercial).	3-5 years	
Develop gateway "mobility hubs" at major entry points for the Region, the YRT/Viva system, and at GO stations.	3-5 years	
Expand the Viva/YRT ITS program, and introduce traveller information systems.	3-5 years	
Develop a framework to establish Municipal Parking Authorities.	3-5 years	
Develop parking strategies in each Regional Centre and along each Regional Corridor.	3-5 years	
Work with local municipalities to introduce maximum residential parking standards.	3-5 years	
Work with area agencies to implement fare integration and/or eliminate double fares at Regional boundaries.	3-5 years	
Plan for effective freight movement systems that minimize impacts on the road network, including potential dedicated road links and rail services.	5-10 years	
Restrict delivery times by heavy vehicles outside of peak commuter travel times within the Regional Centres and along Corridors.	5-10 years	
Explore road user fees for specific arterials.	10+ years	

- Now (0-2 years)
- 3-5 yrs
- 5-10 yrs
- 10+ yrs
- Do Not Consider

POLICY DOTMOCRACY EXPLANATION



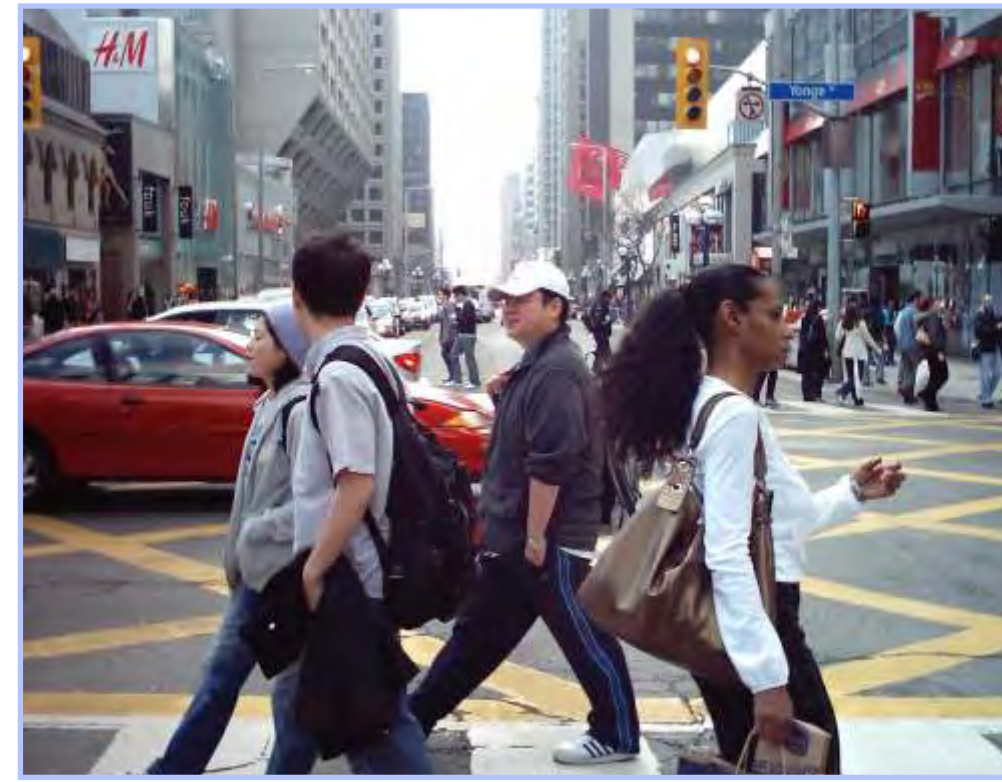
Your “Assignment”

1. Review the description and proposed timing for each proposed strategy.
2. Stick dots on those strategies you believe should be removed or implemented in a different time period.

Example:

Initiate HOV 2+ lanes for all road segments scheduled for widening to six lanes.	0 - 2 years	
--	-------------	--

PROPOSED TRANSIT & ROAD NETWORK WHAT DO YOU THINK?



YOUR
"ASSIGNMENT"

1. Review the proposed transit and road networks provided on the table.
2. Place a green dot on those transit links on roadways that you want to comment on. Write your "Comment Number" in each dot (provided on your form, ex. 4A or 4B)
3. On the form provided, identify the transit link or roadway you wish to discuss, and explain your comment in detail.