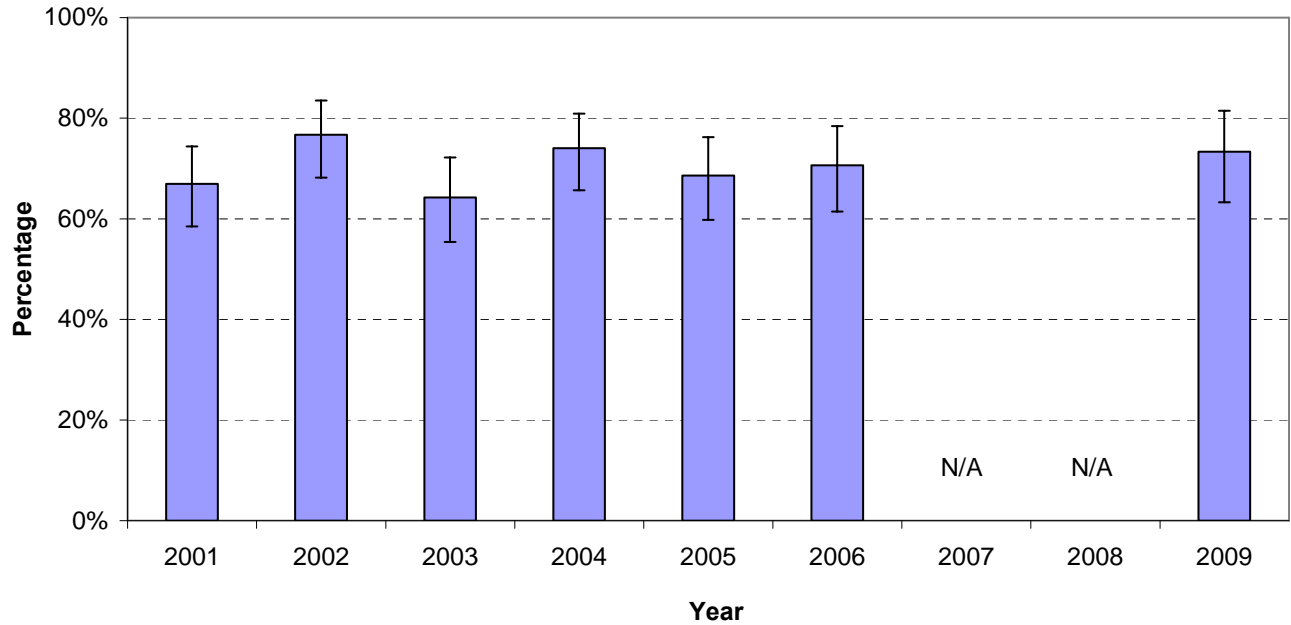


Bike Helmet Use

This summary focuses on the bike helmet use in York Region children/youth aged 5 to 17 years.

Ontario Public Health Standards, Chronic Diseases and Injuries Program Standards, Prevention of Injury and Substance Misuse – Req 1.

Percentage of Children† Aged 5 - 11 Years in York Region Who Always Wear a Bike Helmet, 2001-2009



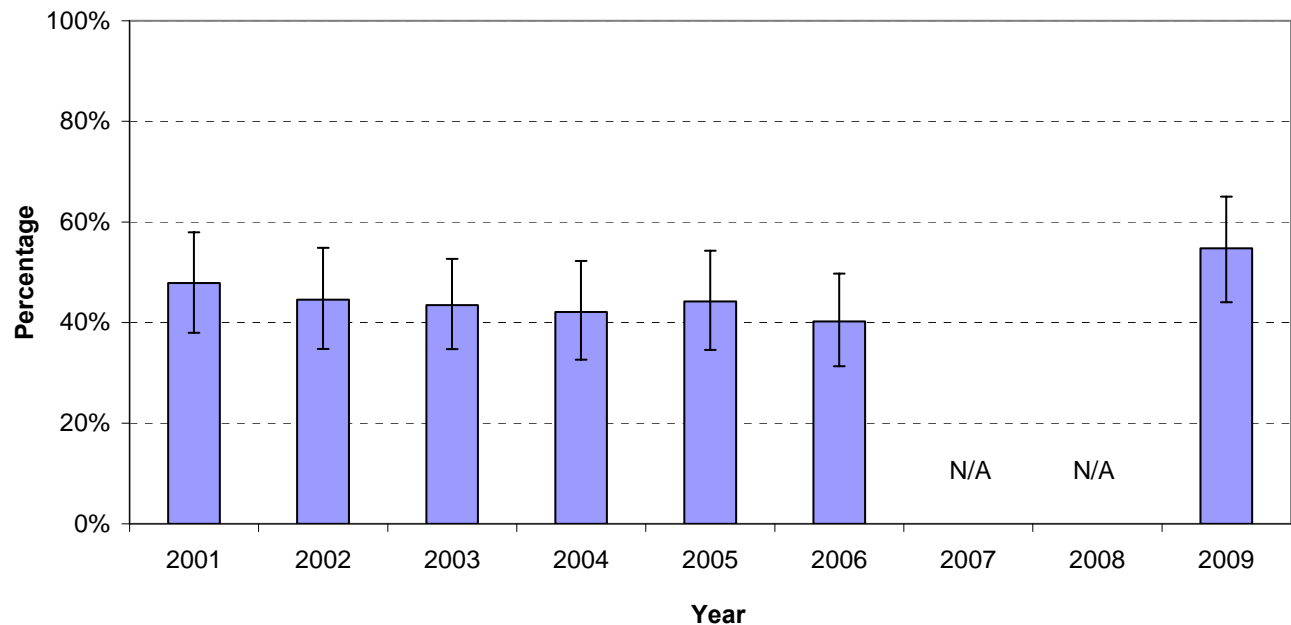
† Responses are taken from child proxy questions, in which a parent/guardian responds on behalf of one child in the household.

Data Source: Rapid Risk Factor Surveillance System, January 2001 – December 2009. (Sample Sizes by Year: 2001 n=133, 2002 n=116, 2003 n=123, 2004 n=127, 2005 n=121, 2006 n=109, 2009 n=90). N/A – Not applicable: York Region data were not collected in 2007 and 2008.

Interpretation:

- In 2009, 73% (± 10) of York Region children aged 5 to 11 years always used a bicycle helmet. Statistically, this percentage has remained the same over seven years of data collection starting in 2001.

Percentage of Children/Youth Aged 12 - 17 Years in York Region Who Always Wear a Bike Helmet, 2001-2009



† Responses are taken from child proxy questions, in which a parent/guardian responds on behalf of one child in the household.

Data Source: Rapid Risk Factor Surveillance System, January 2001 – December 2009. (Sample Sizes by Year: 2001 n=94, 2002 n=92, 2003 n=115, 2004 n=95, 2005 n=95, 2006 n=107, 2009 n=84). N/A – Not applicable: York Region data were not collected in 2007 and 2008.

Interpretation:

- In 2009, 55% (± 11) of York Region children/youth aged 12 to 17 years always used a bicycle helmet. Statistically, this percentage has remained the same over seven years of data collection starting in 2001.

Data Source: Rapid Risk Factor Surveillance System (RRFSS), [January 2001 – December 2009 (variables BH1, BH2)]. For more information on RRFSS, visit <http://www.rfss.ca/>

Adults represent individuals aged 18 years or older. This telephone survey was only administered in English, using a random digit dialling methodology and data are weighted for probability of selection in households of different size. Survey indicators based on self-reported information and may be subject to biases, such as recall bias or social desirability bias, or result in high non-response. A household weight is not applied for child proxy questions, in which a parent/guardian responds on behalf of one child in the household.

† and \pm represents the 95% confidence interval, meaning 19 times out of 20 the results will fall within this range. Confidence intervals are reported as equal, though this is not always the case as the estimate approaches zero or 100%.

'Don't know' and 'refused' responses are excluded if less than five (5) percent.