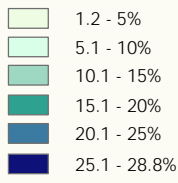


Geographic Distribution of York Region's Low Income Population, 2001 Census

LEGEND

Low Income Rate for persons living in private households (Low Income Before Tax Cut-Offs, based on 2000 income)



Low Income Rate	Census Tract Count
1.2 - 5%	14
5.1 - 10%	56
10.1 - 15%	32
15.1 - 20%	22
20.1 - 25%	3
25.1 - 28.8%	0

▨ Data Not Available

— Census Tract Boundary

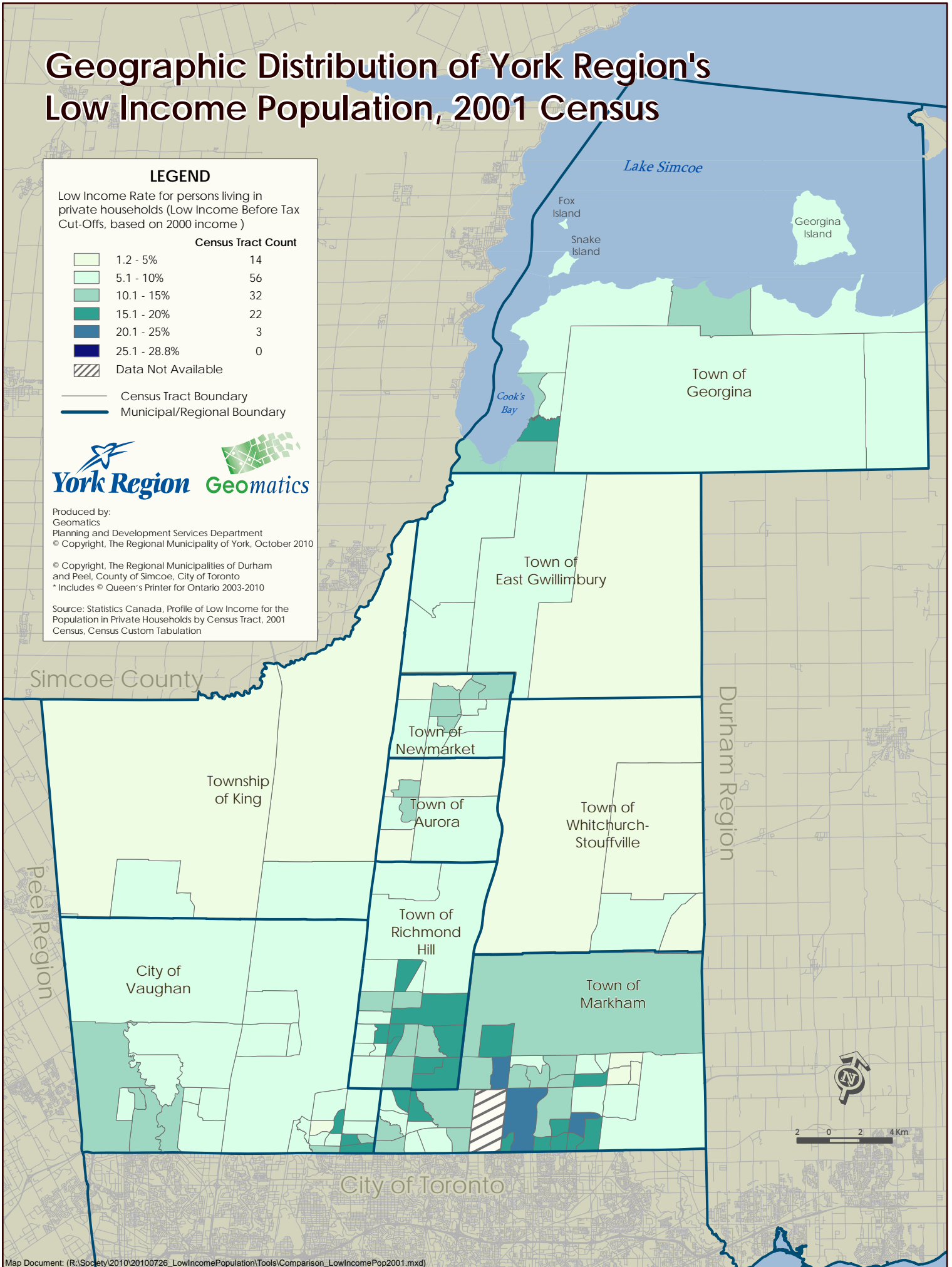
— Municipal/Regional Boundary



Produced by:
Geomatics
Planning and Development Services Department
© Copyright, The Regional Municipality of York, October 2010

© Copyright, The Regional Municipalities of Durham and Peel, County of Simcoe, City of Toronto
* Includes © Queen's Printer for Ontario 2003-2010

Source: Statistics Canada, Profile of Low Income for the Population in Private Households by Census Tract, 2001 Census, Census Custom Tabulation



2 0 2 4 Km