



Best Practices for New Communities Workshop Feedback

Presentation to Planning and Economic
Development Committee

John Waller
January, 7, 2009



Best practices and leading edge technologies discussed at workshop



- Workshop held in December 2008
- 80 participants from various sectors
 - Development industry, provincial government, local municipalities, environment, etc.
- Four keynote speakers and a facilitated breakout discussion

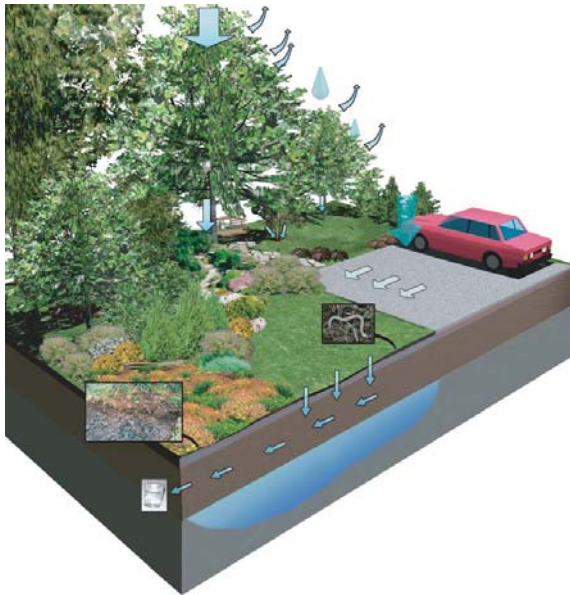
Attendees support the development of new criteria for future communities



- ❑ Innovation needs to be promoted, rewarded and recognized
- ❑ More discussion and education
- ❑ Identify potential cost savings for homeowners
- ❑ Strong leadership
- ❑ Consider pilots and/or demonstration projects
- ❑ Economic advantages to sustainable shift
- ❑ Cannot afford to lose this opportunity

Suggested leading edge technologies

- ❑ Alternative approach to stormwater management, including permeable surfaces and engineered wetlands



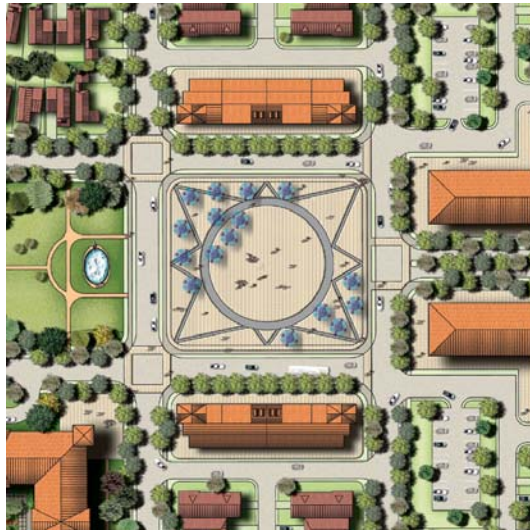
Stormwater Source Control, Metro Vancouver



UniverCity, Burnaby

Suggested leading edge technologies

- ❑ Communities should be pedestrian friendly and include minimum walking distances to transit, trails, bike lanes and public squares (piazzas)



Eco-Tech Village, Milton



Garrison Woods, Calgary

Suggested leading edge technologies

- Streets and buildings should be oriented to maximize passive and active solar gain
 - Appropriate for future solar panel installation



Currents, Ottawa



Harvest Lakes, Perth

Suggested leading edge technologies

□ Future Proofing

- Need flexible and adaptable communities that can be intensified

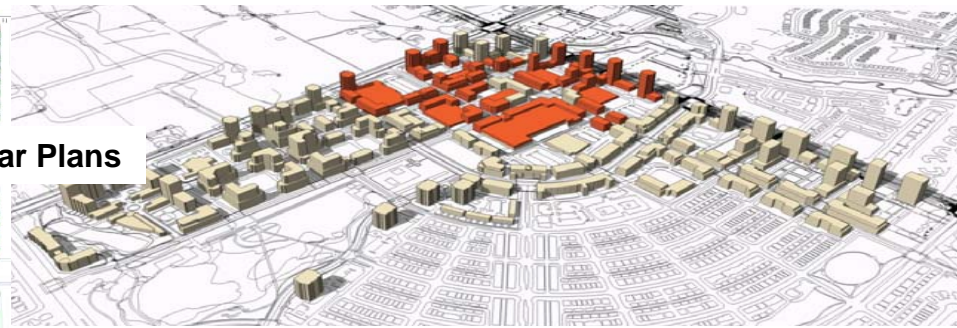
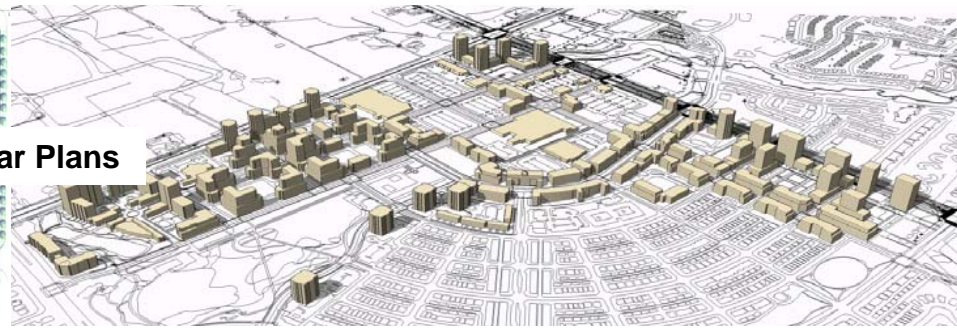


5 Year Plans



25 Year Plans

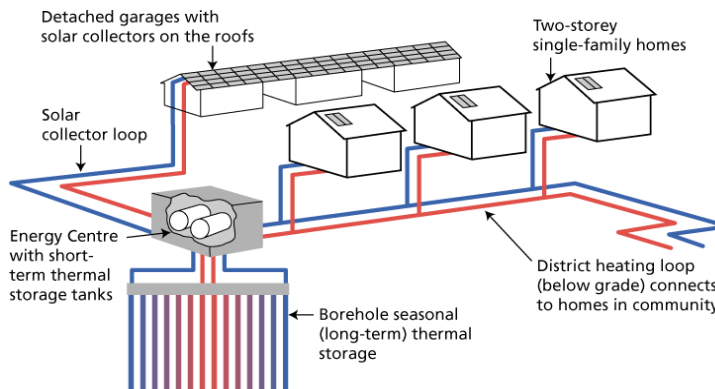
Cornell, Markham



Uptown Core, Oakville

Suggested leading edge technologies

- Mandatory Community Energy Plans
 - District heating and conservation features
- Minimum LEED™ standard buildings



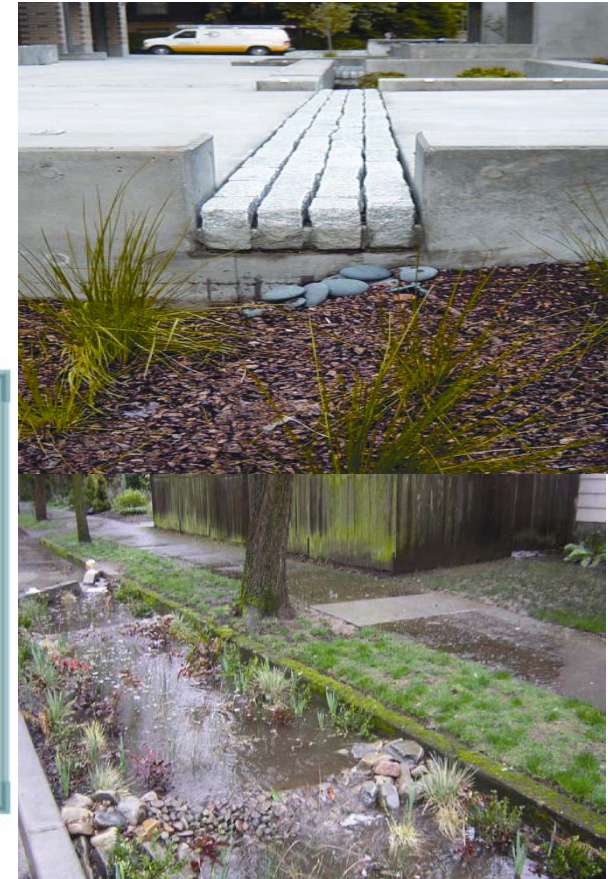
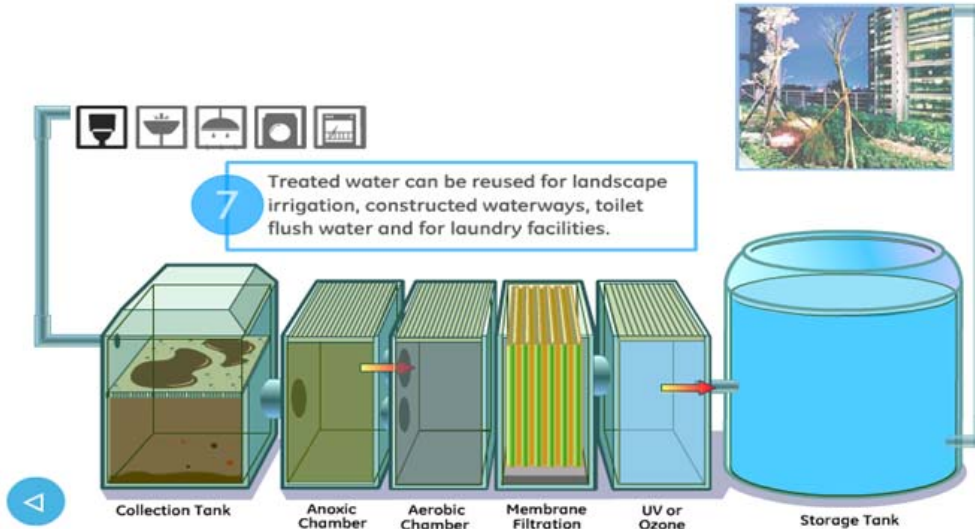
Drake's Landing Solar Community, Okotoks



Dockside Green, Victoria

Suggested leading edge technologies

- Integrated systems approach to resource use
 - On-site water treatment and reuse



Dockside Green, Victoria

Next Steps

- ❑ Staff develop criteria for new communities
- ❑ Update of Regional Official Plan
- ❑ Possible workshop to discuss criteria for Regional Centres

