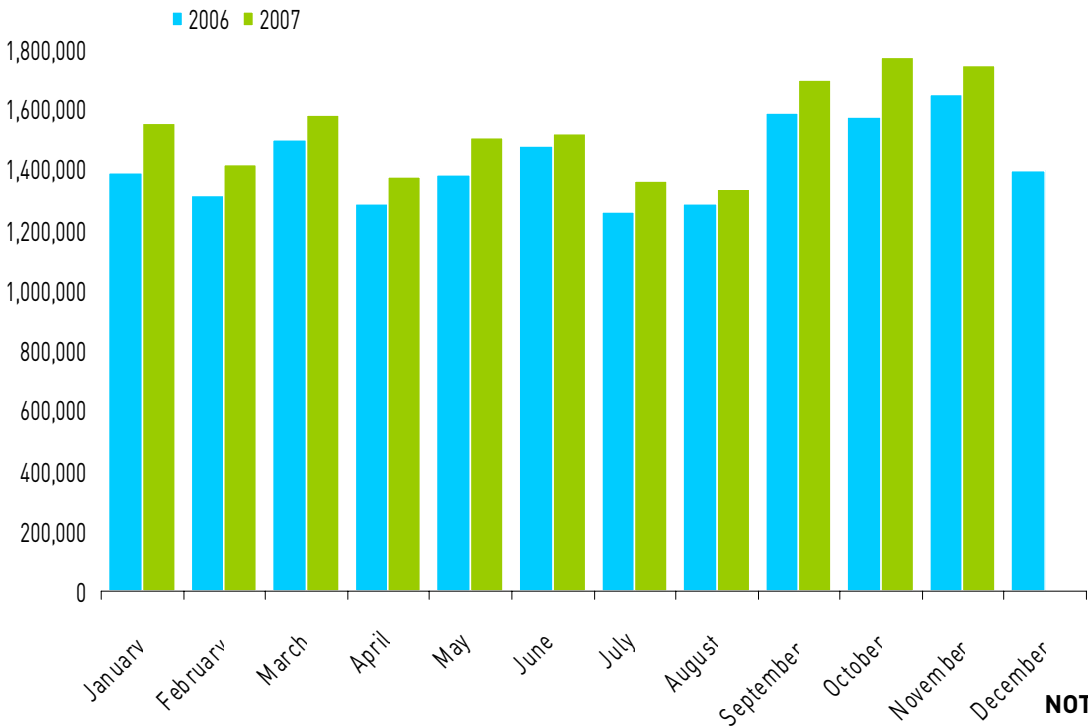


YRT\Viva

2007 Revenue Ridership Summary

Conventional Services including Contracted TTC Services North of Steeles



NOTES:

1. Avg weekday based on sample average.
2. April monthly pass multiplier survey rate applied back to January.
3. 1 less weekday in June 2007 compared to June 2006.
4. August 2007 transfer rate highest on record at 30%.
5. 1 less weekday in Sept 2007, 1 extra weekday in Oct 2007.
6. 2 P.A. days in November 2007. No P.A. days in November 2006.

Month	2006	2007	Month Change ['06 vs '07]	YTD Change	Avg Wkday 2007 ¹
January	1,387,864	1,553,804	12.0%	12.0%	63,928
February	1,316,781	1,413,683	7.4%	9.7%	63,435
March	1,495,804	1,578,946	5.6%	8.2%	61,960
April	1,287,272	1,378,061	7.1%	8.0%	60,027
May	1,385,761	1,505,827	8.7%	8.1%	60,862
June	1,481,381	1,517,426	2.4%	7.1%	61,696
July	1,256,679	1,364,268	8.6%	7.3%	56,172
August	1,285,091	1,333,786	3.8%	6.9%	53,853
September	1,590,446	1,699,184	6.8%	6.9%	72,650
October	1,575,643	1,771,556	12.4%	7.5%	73,728
November	1,649,178	1,743,272	5.7%	7.3%	72,467
December	1,396,358				
YTD	17,108,258	16,859,813			

YORK REGION TRANSIT / VIVA - MONTHLY RIDERSHIP SUMMARY

November 2007

Rev. 11Jan2008

Nov-07	22 Weekdays, 4 Saturdays, 4 Sundays/Holidays
Nov-06	22 Weekdays, 4 Saturdays, 4 Sundays/Holidays

YRT	Route #	Route Name	TOTAL BOARDINGS (MONTH)			TOTAL BOARDINGS (YEAR TO DATE)			Avg Wkday Boardings	Notes
			2006	2007	Percentage (06vs07)	2006	2007	Percentage (06vs07)		
Markham, Stouffville	1*	Highway 7	56,479	58,649	3.8%	687,639	592,775	-13.8%	2,384	Rider migration to Viva purple stabilized - corridor growth on route
	2	Milliken	57,733	57,509	-0.4%	594,183	574,851	-3.3%	2,317	Rider migration to Viva green stabilized
	2A	14th Ave	15,785	14,838	-6.0%	131,143	137,302	4.7%	680	General growth, Limited service into Box Grove to accommodate MDHS (Sept 2007), 2 PA days in 2007 impacting monthly ridership
	3*	Thornhill - York U.	42,660	41,075	-3.7%	368,972	344,349	-6.7%	1,722	Rider migration - Viva purple serving York University
	40/41	Unionville/Markham Local	20,712	22,333	7.8%	200,670	205,909	2.6%	941	Implemented a new school special for MDHS (Sept 2007)
	8	Kennedy Rd	26,124	28,363	8.6%	250,561	284,255	13.4%	1,135	General corridor growth (north of 16th Ave); connections with Viva purple, pink and green
	9	Stouffville	1,794	1,640	-8.6%	14,923	19,018	27.4%	72	General corridor growth, routes restructured (Sept 2007)
	15	Stouffville Local	n/a	1,561	n/a	n/a	3,975	n/a	70	Route restructured (Sept 2007). New high school special implemented (Sept 2007)
	18	Bur Oak	13,988	17,271	23.5%	119,487	147,038	23.1%	774	General corridor growth, additional service frequency, new highschool - Bur Oak Secondary Sept 07
	301	Markham Express	9,140	9,408	2.9%	89,301	93,303	4.5%	423	General growth
	302	Unionville Express	4,652	4,586	-1.4%	45,367	46,288	2.0%	197	
	300	Business Express	7,217	6,870	-4.8%	83,657	67,951	-18.8%	306	Rider migration to Viva purple and pink
	303	Cornell Express	2,295	2,665	16.1%	21,381	26,422	23.6%	119	General growth in Cornell
	201	Markham GO Shuttle	2,186	2,325	6.4%	20,150	24,237	20.3%	104	General corridor growth
	202	Unionville GO Shuttle	2,671	2,497	-6.5%	28,359	29,241	3.1%	111	
	215	Stouffville GO Shuttle	n/a	168	n/a	n/a	406	n/a	7	Transit in Stouffville restructured (Sept 2007)
	522	Markham Community Bus	462	870	88.3%	481	7,209	1398.8%	35	New route - effective Oct '06 (transfer from Mobility Plus trips)
	TTC	Markham Total	263,898	272,628	3.3%	2,656,274	2,604,529	-1.9%	11,397	
	TTC 17A	Birchmount	4,878	4,630	-5.1%	64,720	57,039	-11.9%	230	Rider migration to Viva green
	TTC 224B/C/D	Vic Park North (Woodbine)	17,077	16,979	-0.6%	195,635	184,169	-5.9%	717	
	TTC 25D *	Don Mills	23,944	23,864	-0.3%	279,130	261,790	-6.2%	1,187	Route 90 operating in this corridor
	TTC 68B	Warden North	21,406	22,378	4.5%	250,526	231,639	-7.5%	1,927	Monthly increase due to viva green only operating during peak periods (Sept 2007)
	TTC 102D	Markham Rd	12,338	14,468	17.3%	130,372	132,282	1.5%	667	General growth
	TTC 129A	McCowan North	63,740	67,090	5.3%	667,479	678,009	1.6%	2,861	Growth growth
		TTC Total	143,383	149,409	4.2%	1,587,862	1,544,928	-2.7%	7,589	
	Markham & TTC Total	407,281	422,037	3.6%	4,244,136	4,149,457	-2.2%	18,986		
Vaughan, King	4*	Major Mackenzie	53,058	52,350	-1.3%	528,406	567,415	7.4%	2,095	General corridor growth: 2 new PA Days in Nov 2007 resulted in lower student ridership
	5 *	Clark	45,085	42,434	-5.9%	437,339	404,681	-7.5%	1,794	Rider migration to Rte 23; 2 new PA Days in Nov 2007 resulted in lower student ridership
	7 *	Martin Grove	19,030	21,098	10.9%	152,604	182,671	19.7%	929	General corridor growth & Humber College ridership
	10	York U. (Woodbridge)	9,956	9,332	-6.3%	75,588	75,022	-0.7%	393	Rider migration to Viva orange
	11	Woodbridge	2,539	2,409	-5.1%	25,115	22,720	-9.5%	85	Rider migration to Viva orange
	12	Pine Valley	9,451	7,592	-19.7%	65,172	65,266	0.1%	302	Rider migration to Route 20
	13	Islington Ave	9,475	9,078	-4.2%	88,634	88,454	-0.2%	366	Rider migration to Route 85
	20	Jane	46,814	50,503	7.9%	494,084	542,906	9.9%	1,884	General corridor growth
	22*	King City	5,958	7,447	25.0%	39,413	53,734	36.3%	332	General corridor growth: new ridership resulting from deviation via Kingshill Subdivision for Cardinal Carter H.S. (Implemented Sep'07)
	23*	Thornhill Woods	15,491	16,954	9.4%	136,403	163,945	20.2%	759	General corridor growth
	27	Highway 27	3,816	4,859	27.3%	62,009	43,719	-29.5%	205	Decreased business and reduced workforce over same period in 2006
	77*(excl.BT)	Hwy 7 - Centre St	68,256	68,705	0.7%	680,514	699,901	2.8%	2,862	
	99*	Yonge	91,235	96,838	6.1%	1,004,538	945,540	-5.9%	3,818	Rider migration to Viva blue/pink
	260	Rutherford GO Shuttle	266	0	-100.0%	3,565	2,602	-27.0%	n/a	Service cancelled effective Sept 2007 due to low ridership and poor performance
	318/319*	Wonderland Express	n/a	n/a	n/a	1,707	n/a	n/a	n/a	Summer weekend/holiday service only - service cancelled for Summer 2007 due to low ridership and poor performance
	360*	Maple Express	8,046	10,209	26.9%	62,534	74,537	19.2%	442	General corridor growth
	TTC	Vaughan Total	388,476	399,808	2.9%	3,857,625	3,933,113	2.0%	16,266	
	35-D	Jane	31,932	38,994	22.1%	380,352	378,964	-0.4%	1,939	Updated ridership sampling
	37-D	Islington	2,704	3,542	31.0%	35,797	34,203	-4.5%	177	Earlier rider migration to Viva purple/orange; more recent corridor growth
	105	Dufferin N.	40,308	42,918	6.5%	421,073	434,869	3.3%	1,690	General corridor growth
	107-C/D/B/F	Keele N.	75,850	74,794	-1.4%	846,912	825,245	-2.6%	3,636	Rider migration to Viva purple
	160	Bathurst N.	20,524	20,100	-2.1%	218,005	230,101	5.5%	876	General corridor growth (New Liberty residential dev't at Thornhill Town Centre); more recent impact on ridership due to construction & stop relocation at Promenade
	165-D	Weston Road N.	35,864	37,574	4.8%	382,399	393,232	2.8%	1,697	General corridor growth
		TTC Total	207,182	217,922	5.2%	2,284,538	2,296,614	0.5%	10,013	
		Vaughan & TTC Total	595,658	617,730	3.7%	6,142,163	6,229,727	1.4%	26,279	

* Route crosses municipal boundaries.

YRT	Route #	Route Name	TOTAL BOARDINGS (MONTH)			TOTAL BOARDINGS (YEAR TO DATE)			Avg Wkday Boardings	
			2006	2007	Percentage (06vs07)	2006	2007	Percentage (06vs07)		
Richmond Hill	82	Newkirk	11,962	10,938	-8.6%	93,422	96,434	3.2%	518	2 new PA Days in Nov 2007 resulted in lower student ridership when compared to Nov 2006
	83	Trench	21,296	20,349	-4.4%	162,133	181,949	12.2%	956	General corridor growth due to increased student ridership to Langstaff Secondary on the Route 83A branch. Nov Ridership also impacted by 2 new PA Days.
	84	Oak Ridges	5,966	5,815	-2.5%	49,895	49,796	-0.2%	258	Rider migration to Route 22 destined to and from Cardinal Carter H.S. Nov Ridership also impacted by 2 new PA Days
	85*	16th Ave/Rutherford	81,386	83,215	2.2%	762,266	836,851	9.8%	3,269	General corridor growth; Nov Ridership also impacted by 2 new PA Days
	86	Welrick	13,152	17,385	32.2%	113,306	147,398	30.1%	805	General corridor growth + the new routes 447 & 450 school specials (effective Sept 07) from Inspiration, Jefferson Forest, Bernard Subdivions to St. Theresa H.S
	87*	Langstaff Local	20,710	20,835	0.6%	168,033	183,164	9.0%	986	General corridor growth due to increased student ridership to Stephen Lewis H.S.; Nov Ridership also impacted by 2 new PA Days
	88*	Bathurst	60,380	63,229	4.7%	518,645	564,199	8.8%	2,431	General corridor growth; Nov Ridership also impacted by 2 new PA Days
	89	RH Community Bus	2,741	3,412	24.5%	31,930	35,674	11.7%	129	General corridor growth
	90*	Leslie	23,110	23,878	3.3%	211,327	221,524	4.8%	1,069	General corridor growth; Nov Ridership also impacted by 2 new PA Days
	91*	Bayview South	96,102	101,046	5.1%	954,295	1,000,500	4.8%	3,994	General corridor growth - conversion of Bayview Express 340 to regular Rt 91 trips effective Sept 07
	240	Mill Pond GO Shuttle	2,508	2,890	15.2%	24,978	29,064	16.4%	138	General corridor growth
	241	Bev Acres GO Shuttle	1,738	1,792	3.1%	17,877	16,852	-5.7%	84	Rider migration to Route 243
	242	N Richvale GO Shuttle	858	1,045	21.8%	7,595	8,524	12.2%	49	
	243	Redstone GO Shuttle	3,212	4,443	38.3%	30,978	35,566	14.8%	211	General corridor growth
340*	Bayview Express	3,066	1,343	-56.2%	8,590	10,521	22.5%	94	PM Express trips cancelled - converted to regular Rt 91 trips; ridership transferred to Route 91/91A	
Richmond Hill Total			348,187	361,615	3.9%	3,155,270	3,418,016	8.3%	14,991	
Aurora	31*	Aurora North	7,096	5,738	-19.1%	50,339	59,797	18.8%	266	General corridor growth on the western portion of Route serving the new Bayview & Wellington subdivisions
	32	Aurora South	6,116	7,311	19.5%	46,800	63,527	35.7%	316	General corridor growth due to increase student activity to G.W. Williams
	33	Wellington	836	1,043	24.8%	4,029	11,787	192.6%	47	General corridor growth on the western portion of Route serving the new Bayview & Wellington subdivisions
	34	Industrial Parkway	616	1,021	65.7%	12,410	12,075	-2.7%	47	Ridership decrease due to rider migration to Route 222
Aurora Total			14,664	15,113	3.1%	113,578	147,186	29.6%	676	
Newmarket, East Gwill., Georgina	44	Bristol - London	3,930	5,179	31.8%	45,295	48,546	7.2%	197	Evening service cancelled and replaced with Dial a ride pilot (effective Sept 07 - 267 total for Dial a ride) + introduction of Route 423 to Newmarket H.S.
	50	Queensway S (Keswick)	2,214	0	-100.0%	19,618	10,113	-48.5%	n/a	Route cancelled effective September 07 and replaced with restructured Route 51 Keswick local and New Rt 69 GO Georgina Fare Integration service.
	51	Keswick Local	4,112	4,969	20.8%	40,765	41,088	0.8%	200	General corridor growth due to the new Route 51 restructuring (effective Sept 07) and rider migration from the former Route 50 Queensway
	52*	Holland Landing Loc	5,840	6,137	5.1%	50,503	62,363	23.5%	218	General corridor growth
	54*	Bayview North	3,842	3,901	1.5%	40,157	41,433	3.2%	169	Route change from Prospect to Main St Sept 2006
	55/55B	Davis Dr.	32,626	32,484	-0.4%	329,531	348,116	5.6%	1,221	General corridor growth; Nov Ridership also impacted by 2 new PA Days
	56	Gorham-Eagle	11,544	11,987	3.8%	110,543	114,824	3.9%	494	General corridor growth
	57/57A	Mulock Dr.	16,054	14,505	-9.6%	136,679	152,972	11.9%	641	General corridor growth + the opening of the New Magna Recreation Complex at Mulock and College Manor. Nov Ridership also impacted by 2 new PA Days
	58/58A	Leslie North	1,760	2,288	30.0%	15,419	18,417	19.4%	100	General corridor growth
	GO Rt 69	Sutton GO Bus	n/a	3,425	n/a	n/a	7,336	n/a	137	New service within the Town of East Gwillimbury and Georgina; replaced Route 50 Queensway.
	98*	Yonge North	18,355	22,704	23.7%	188,431	216,525	14.9%	873	General corridor growth
	222	Aurora-Nmkt GO Shuttle	462	1,290	179.2%	1,847	9,601	419.8%	60	Ridership increase due to rider migration from Route 34
	223	Newmarket GO Shuttle	418	629	50.5%	4,360	5,743	31.7%	30	General corridor growth; Average daily ridership has doubled since 2006, trend is increasing every month
	225	Bales Dr Shuttle	198	0	-100.0%	1,608	2,039	26.8%	n/a	Route cancelled effective September 07 due route not meeting minimum ridership and financial standards
520/521	Newmarket Community Bus	1,312	1,348	2.7%	17,081	13,760	-19.4%	56	Ridership now based on actuals (effective Sept '06) rather than sample data: 06 YTD Ridership between Jan & Sept was overstated and this is why 06vs07 YRT indicates	
Newmarket Total			102,667	110,846	8.0%	1,001,837	1,092,876	9.1%	4,396	
YRT Sub-Total			1,468,457	1,527,341	4.0%	14,656,984	15,037,262	2.6%	65,328	

* Route crosses municipal boundaries.

Viva	blue	Yonge Corridor	417,849	439,368	5.1%	3,923,494	4,482,653	14.3%	16,678	General corridor growth
	purple	Highway 7 Corridor	181,334	185,816	2.5%	1,441,493	1,733,037	20.2%	7,353	Effective Sept 2007, route restructured (no longer operates to Martin Grove during peaks)
	green	Markham North-South Link	35,825	20,170	-43.7%	298,942	300,429	0.5%	917	Effective Sept 2007, route now operates during weekday peak periods only. Midday ridership has migrated to Purple, Blue and Route 90.
	orange	Vaughan North-South Link	59,739	76,805	28.6%	500,526	662,329	32.3%	3,025	Effective Sept 2007, peak frequency increased to 10 minutes (from 15) as part of Viva purple restructuring
	pink	Finch - Unionville	50,455	53,925	6.9%	377,187	542,936	43.9%	2,451	YTD increase is high due to Route 1 truncation in May 2006
Viva Sub-Total			745,202	776,083	4.1%	6,541,642	7,721,383	18.0%	30,424	

Tot. Boardings	YRT / VIVA SYSTEM TOTAL	2,213,659	2,303,424	4.1%	21,198,626	22,758,645	7.4%	95,752
-----------------------	--------------------------------	------------------	------------------	-------------	-------------------	-------------------	-------------	---------------

Rev. Ridership	YRT / VIVA SYSTEM TOTAL	1,649,178	1,743,272	5.7%	15,711,900	16,859,813	7.3%	72,467
-----------------------	--------------------------------	------------------	------------------	-------------	-------------------	-------------------	-------------	---------------

Notes:

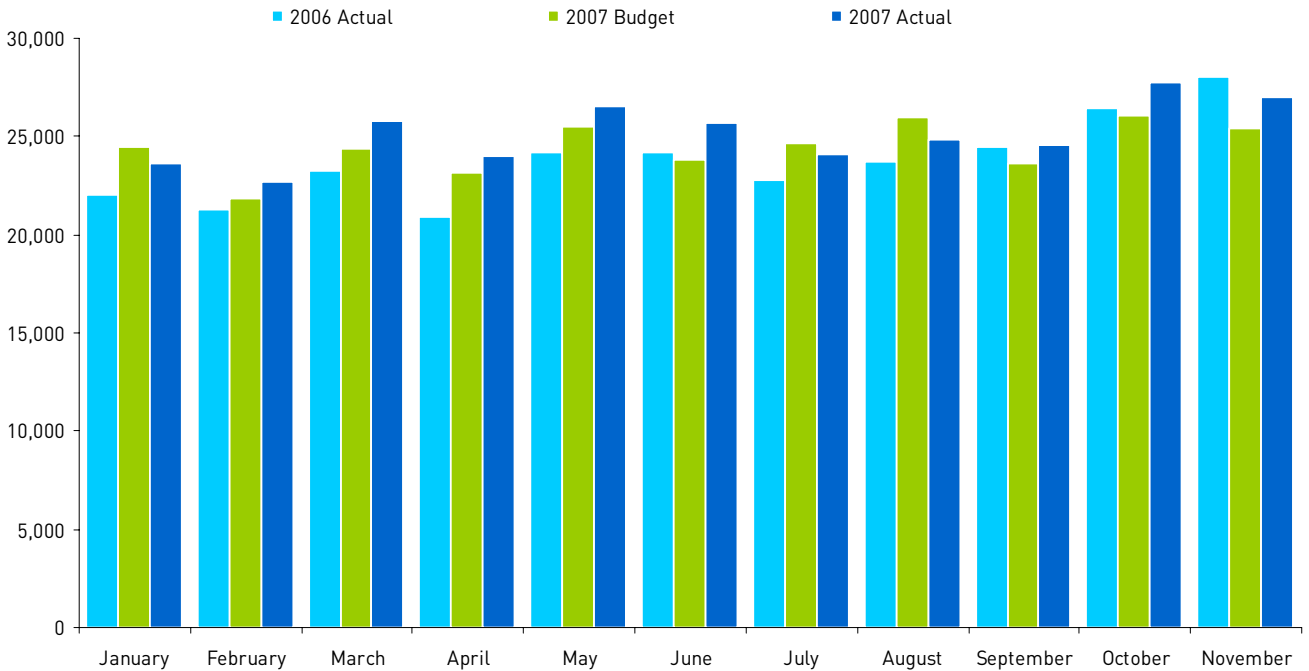
- System-wide transfer rate is revenue boardings / total boardings = 24.3% for November '07.
- Transfer rate takes into consideration the following:
 - September 2005 route restructurings
 - On-street fare system (evasion, enforcement, maintenance)
 - Increase in timed-transfers (from 90 to 120 minutes)



YORK
REGION
TRANSIT



YRT\Viva 2007 Ridership Summary Specialized Services – Mobility Plus



Month	2006 Actual Ridership	2007 Budgeted Ridership	2007 Actual Ridership	2007 Actual Increase / Decrease to Budget	2007 Actual Increase / Decrease to 2006 Actual
January	22,074	24,433	23,588	- 3.5%	6.9%
February	21,267	21,810	22,684	4.0%	6.7%
March	23,215	24,406	25,774	5.6%	11.0%
April	20,900	23,180	24,020	3.6%	14.9%
May	24,205	25,457	26,557	4.3%	9.7%
June	24,155	23,830	25,664	7.7%	6.2%
July	22,740	24,695	24,123	-2.3%	6.1%
August	23,676	25,979	24,833	-4.4%	4.9%
September	24,501	23,633	24,568	4.0%	0.3%
October	26,465	26,084	27,761	6.4%	4.9%
November	28,007	25,434	27,017	6.2%	-3.5%
December	22,682	24,998			
YTD	283,887	293,939	298,247	2.5%	7.0%

NOTES:

- Ridership includes attendants & companions.