



# Economic Indicators

Presentation

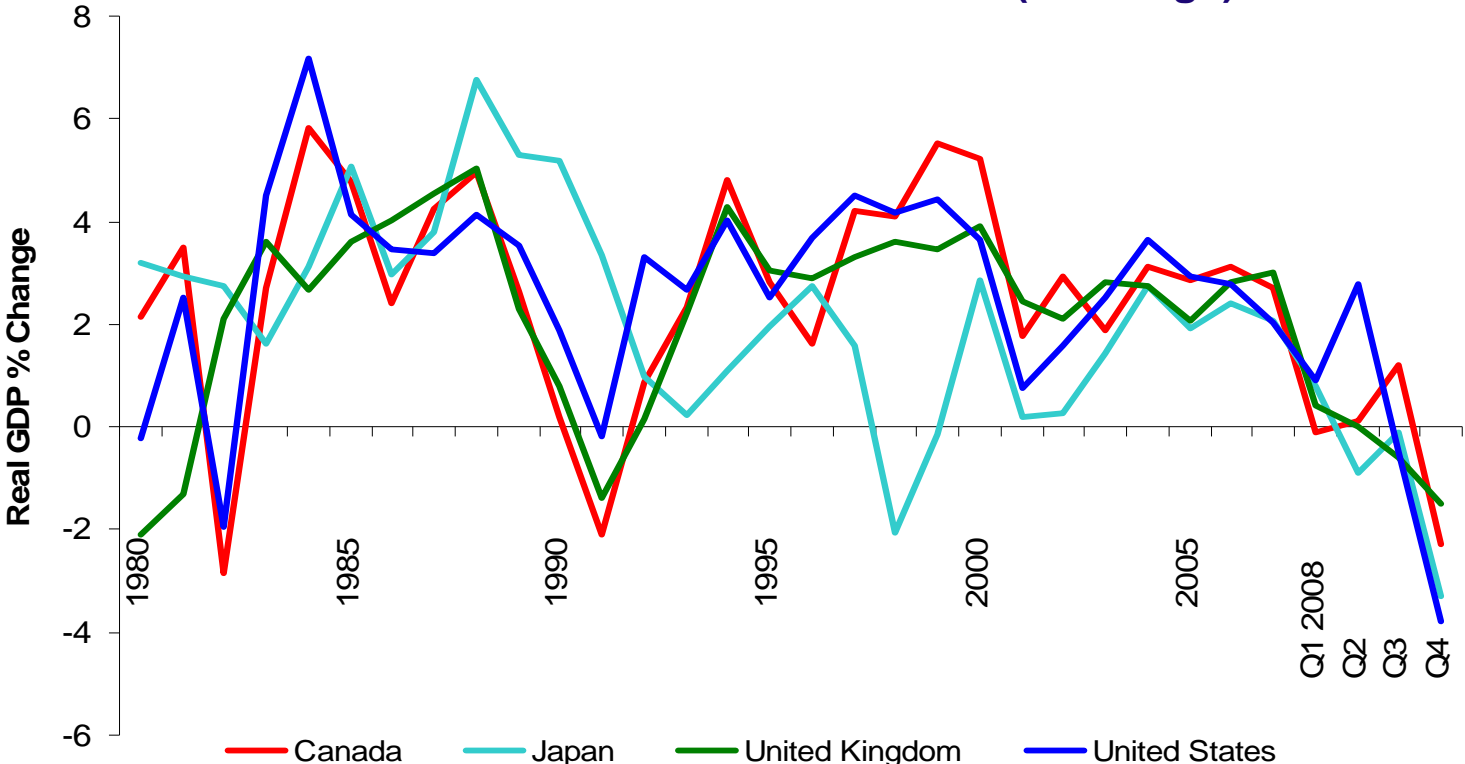
at

Planning & Economic  
Development Committee

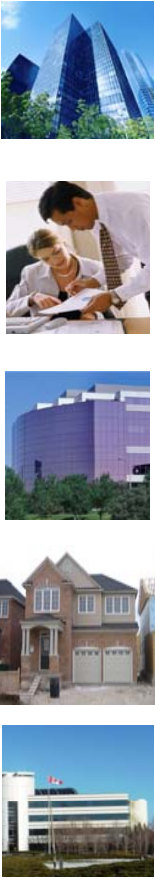
Patrick Draper – March 4, 2009

# Global GDP Economic Trends

Real Gross Domestic Product (%Change)



Source: International Monetary Fund, World Economic Outlook Database



# Leading Economic Indicators

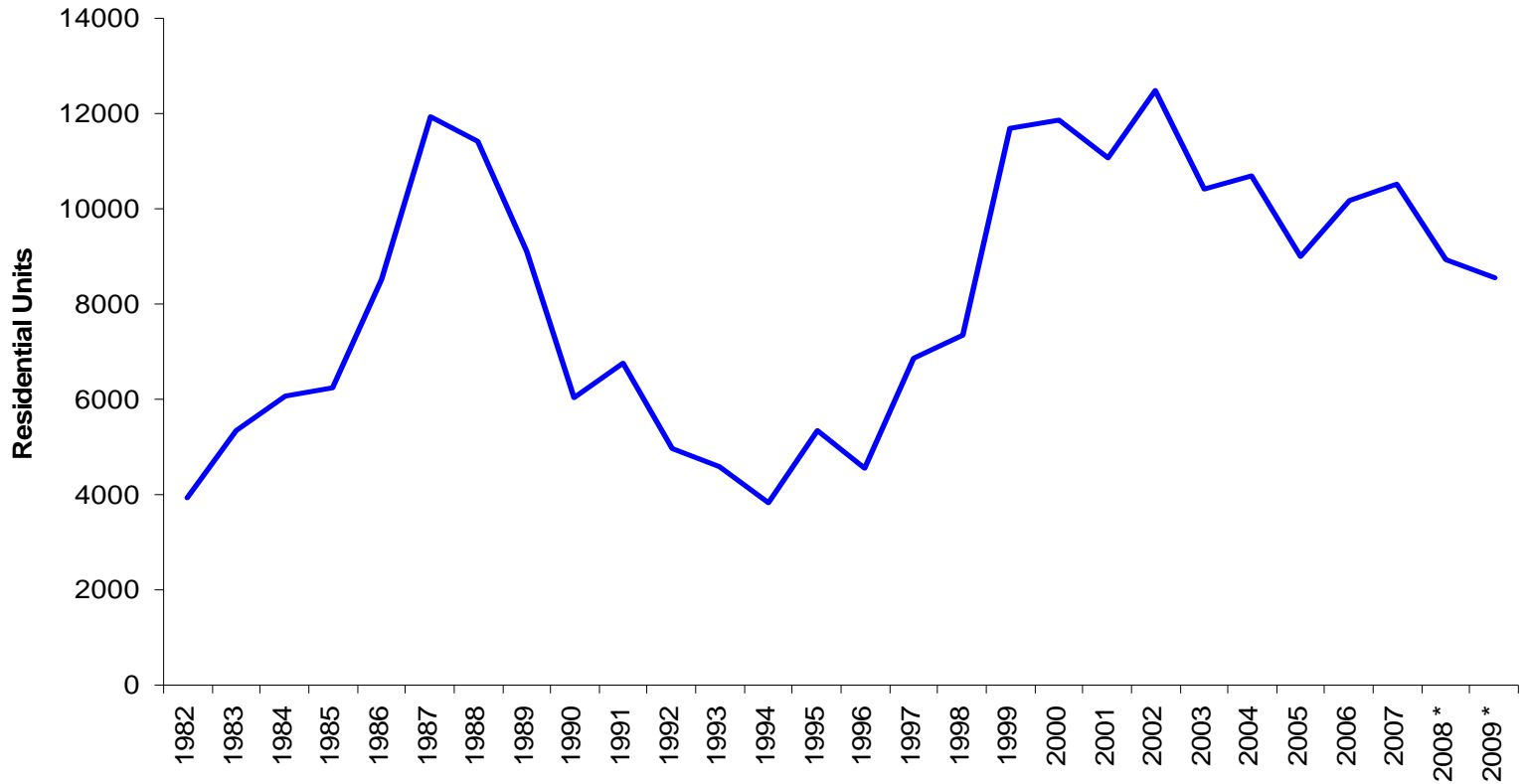


<b>Economic Indicator</b>	<b>United States</b>	<b>Canada</b>	<b>Ontario</b>
Exports	-6% in December	-9.7% in December	-7.8% in December
Employment	-598K jobs in January 2009	-129K jobs in January 2009	-71K jobs in January 2009
Un-Employment	7.6% January 2009	7.2% January 2009	8.0% January 2009
Housing Starts	-15.5% in December	-40% in January 2009	-32% in January 2009
Home Re-sales	-15.3% in December 2008 vs. year ago	-37.3% January 2009 vs. year ago	-47% in January 2009 vs. year ago (GTA)
Manufacturing Sales	-2.9% in December	-8% in December 2008	-9.2% in December 2008
Retail Sales	-3.3% in December	-5.4% in December 2008	-6.0% in December 2008

Source: Statistics Canada, Industry Associations and US Bureau of Economic Research

# York Region Residential Building

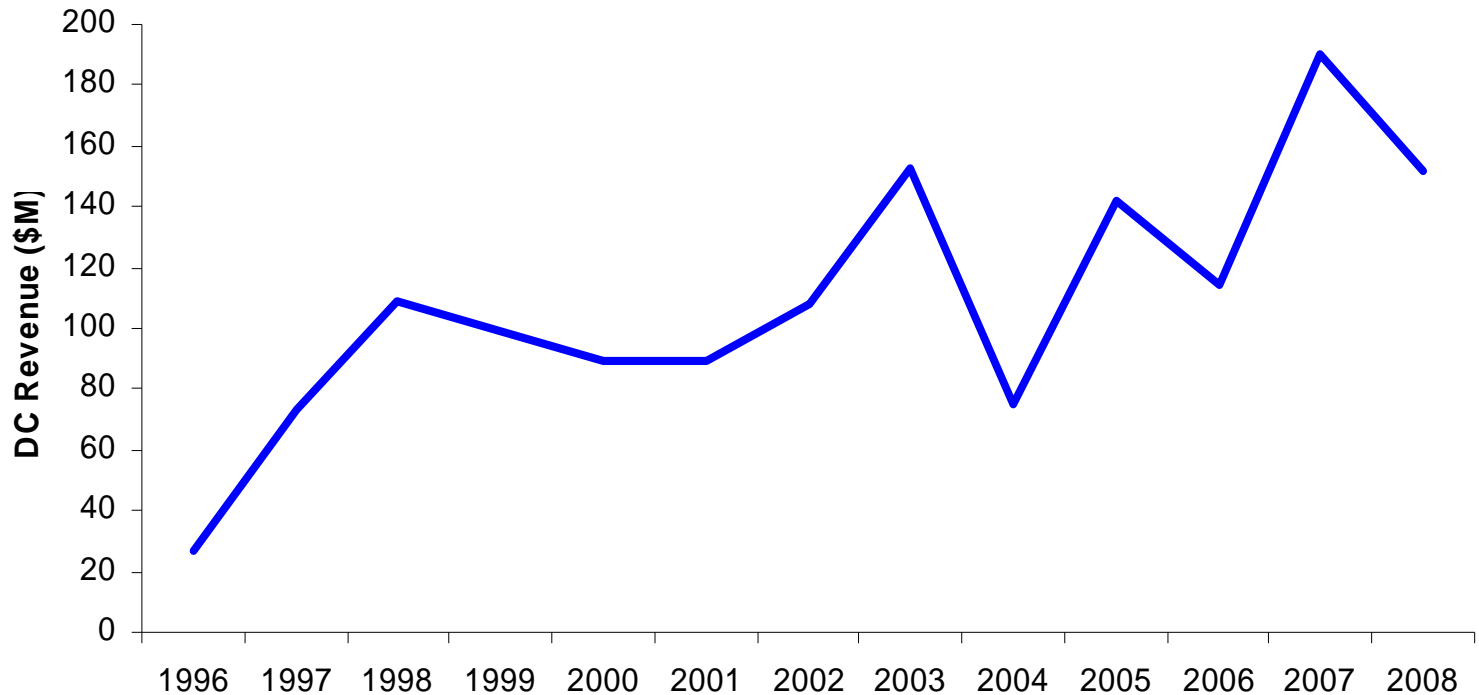
## Historical Residential Completion Data (Units)



Source: York Region

# York Region DC Revenue

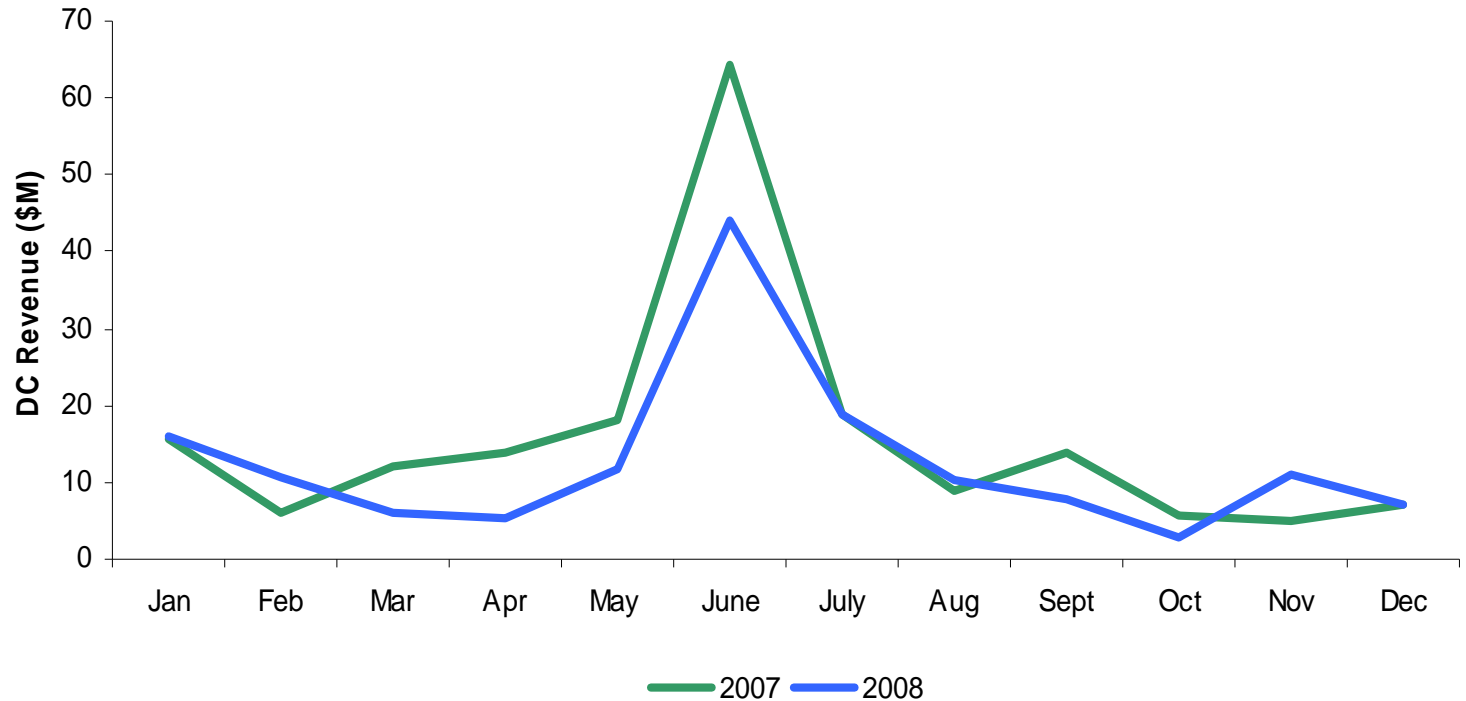
## Historical Development Charge Revenue (\$M)



Source: York Region

# York Region DC Revenue

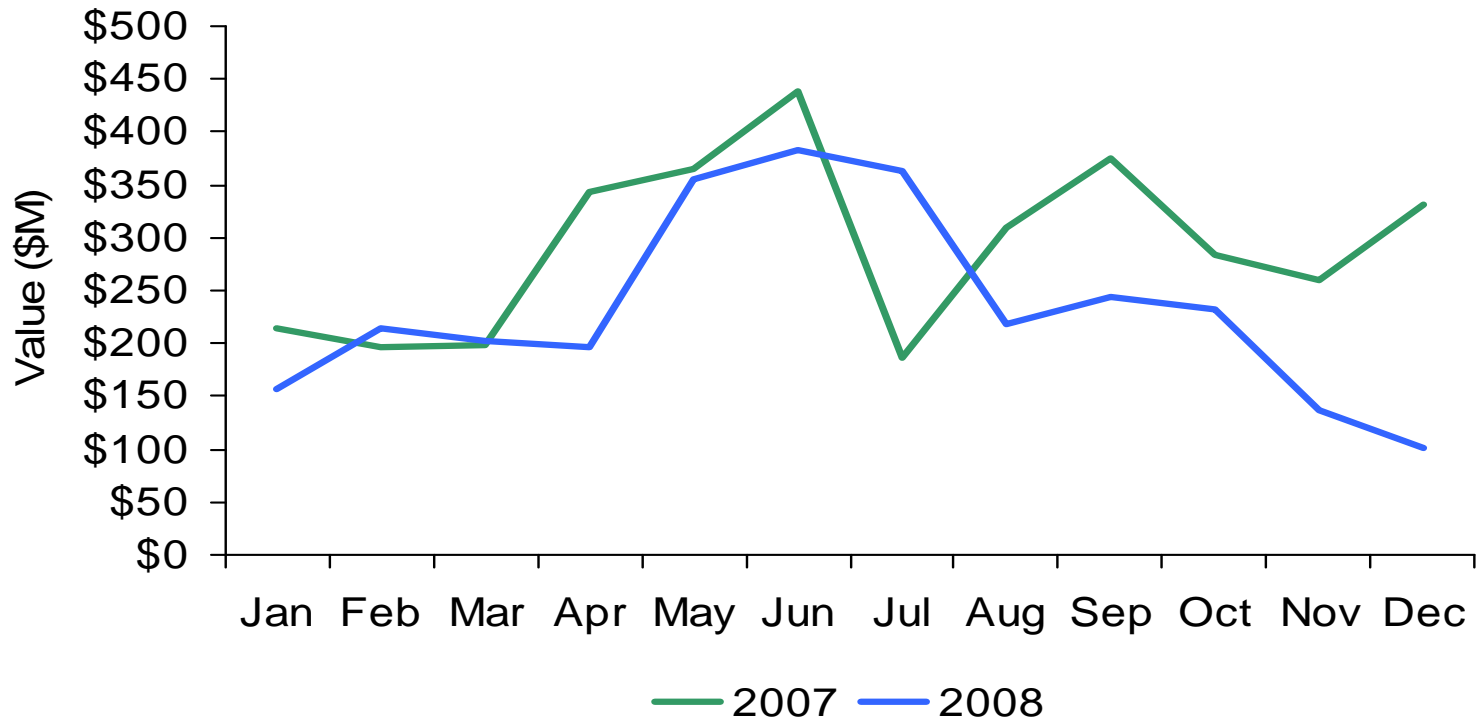
## Monthly Development Charge Revenue (\$M)



Source: York Region

# York Region Building Permits

## Total Value of Building Permits (\$M)



Source: York Region

# Building Permits by Municipality

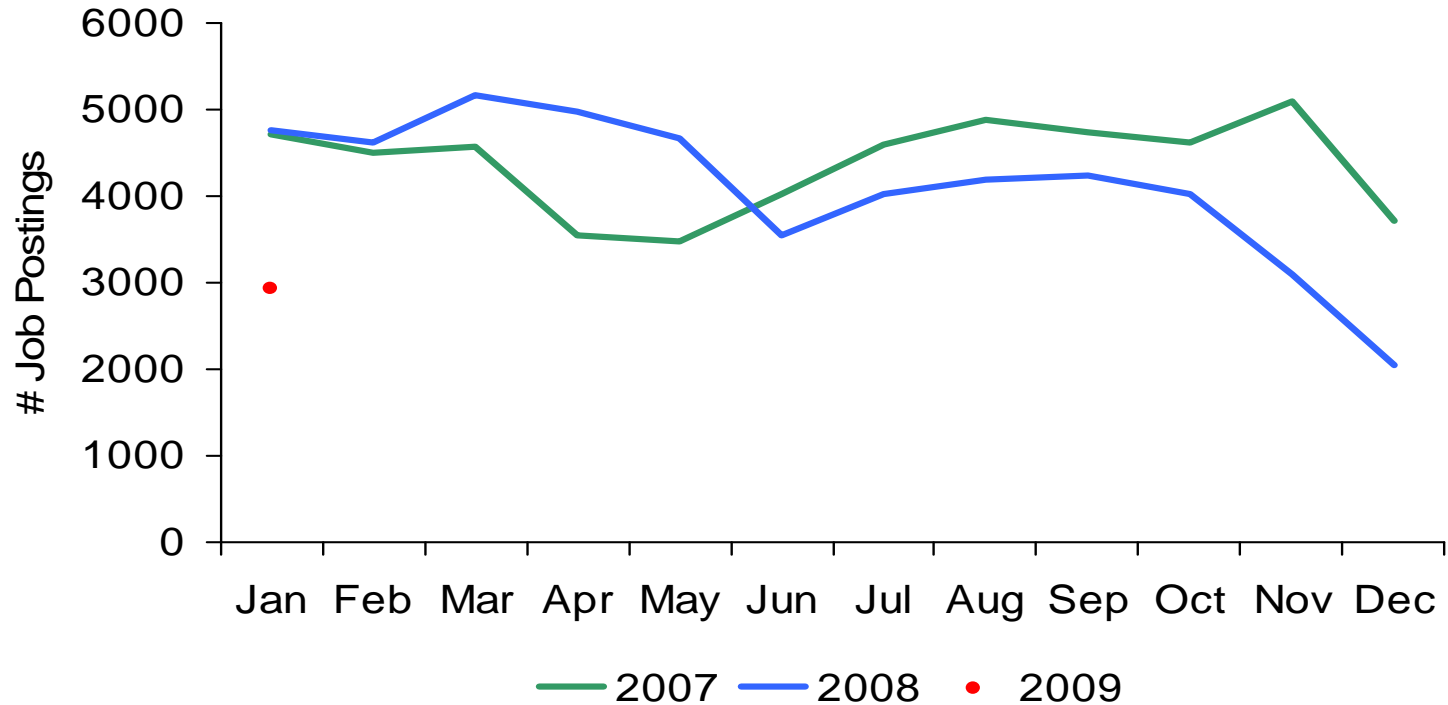


Q4 2008 % VYA	Residential (\$M)	ICI (\$M)	Total (\$M)	%VYA
Aurora	\$28.0	\$1.5	\$29.5	4%
East Gwillimbury	\$4.1	\$1.0	\$5.1	8%
Georgina	\$5.0	\$0.2	\$5.2	-63%
King	\$2.9	\$3.3	\$6.2	-36%
Markham	\$58.5	\$57.9	\$116.4	-57%
Newmarket	\$41.2	\$5.0	\$46.2	126%
Richmond Hill	\$8.2	\$21.8	\$30.0	-47%
Vaughan	\$139.8	\$32.7	\$172.5	-59%
Whitchurch Stouffville	\$35.4	\$22.6	\$58.0	28%
Total York Region	\$323.1	\$146.0	\$469.1	-46%

Source: York Region and Local Municipalities

# York Region Advertised Job Postings

## Monthly Total Job Postings (#)



Source: York Region

# Advertised Job Postings by Municipality

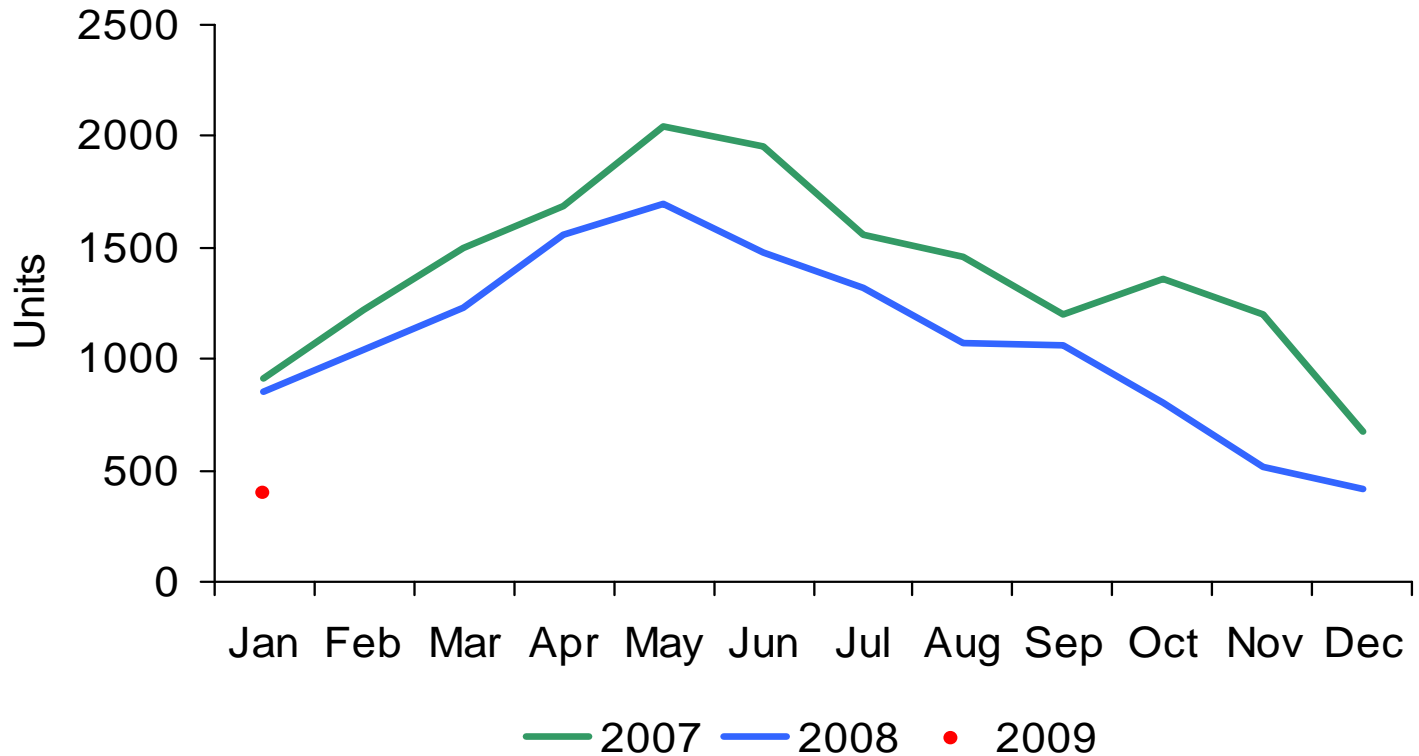


Q4 2008	# Jobs Posted	% VYA
Aurora	383	-50%
East Gwillimbury	4	-80%
Georgina	21	-57%
King	61	-46%
Markham	3,433	-29%
Newmarket	1,100	-35%
Richmond Hill	1,177	-33%
Vaughan	1,238	-58%
Whitchurch Stouffville	51	-48%
Total York Region	9,180	-32%

Source: York Region

# York Region Home Re-sales

## Monthly Total Home Re-sales (#)



Source: TREB MLS

# Home Re-sales by Municipality



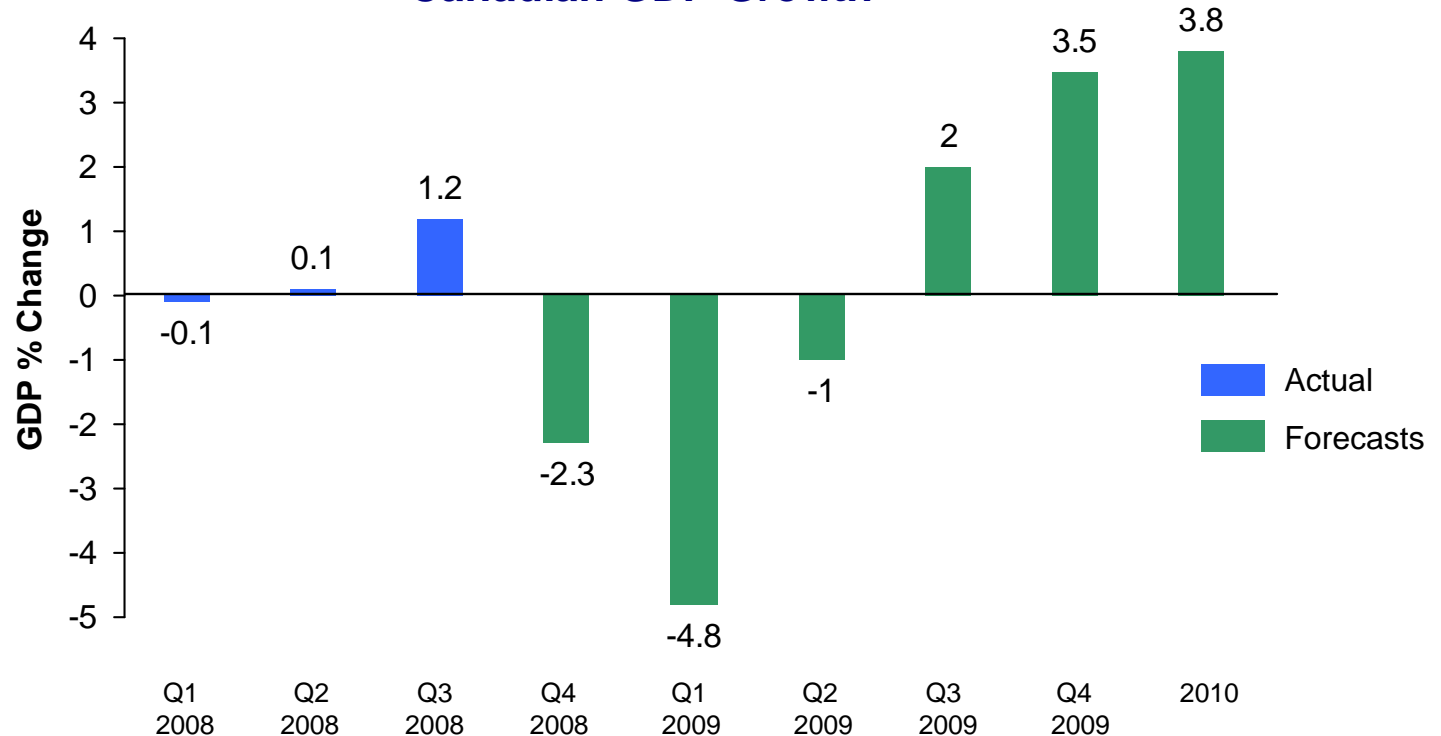
Q4 2008	# Home Re-sales	% VYA
Aurora	107	-40%
East Gwillimbury	41	-
Georgina	121	-32%
King	38	-28%
Markham	426	-45%
Newmarket	199	-27%
Richmond Hill	388	-58%
Vaughan	358	-49%
Whitchurch Stouffville	54	-44%
Total York Region	1,732	-46%

Source: TREB MLS

# Bank of Canada GDP Forecasts



## Canadian GDP Growth



Source: Statistics Canada and Bank of Canada January 22, 2009

# Going Forward



## Continue to share relevant information

- Monthly updates to Committee
- Presentation to local CAO's February 27<sup>th</sup>
- Presentation to local EDO's March 6<sup>th</sup>
- Track key measures and benchmark York Region
  - Housing re-sales
  - Employment trends
  - Building permits