

HIGHWAY 7 CORRIDOR AND VAUGHAN NORTH-SOUTH LINK Transit Improvements Environmental Assessment (EA) Subway Alignment Selection Report

Highway 7 (VCC) Station

Planning and Design Criteria

- Accommodate bus/rail transfers in the area required by YRT/VIVA routes utilizing the VCC Official Plan road grid.
- Provide bus pick-up/drop-off and layover facilities as required by YRT respecting VCC Streetscape and Open Space Master Plan Study recommendations.
- Provide a passenger pick-up/drop-off facility
- Identify options for a limited parking facility recognizing the City of Vaughan vision set out in the VCC Official Plan.

Summary of Effects and Mitigation

Transportation

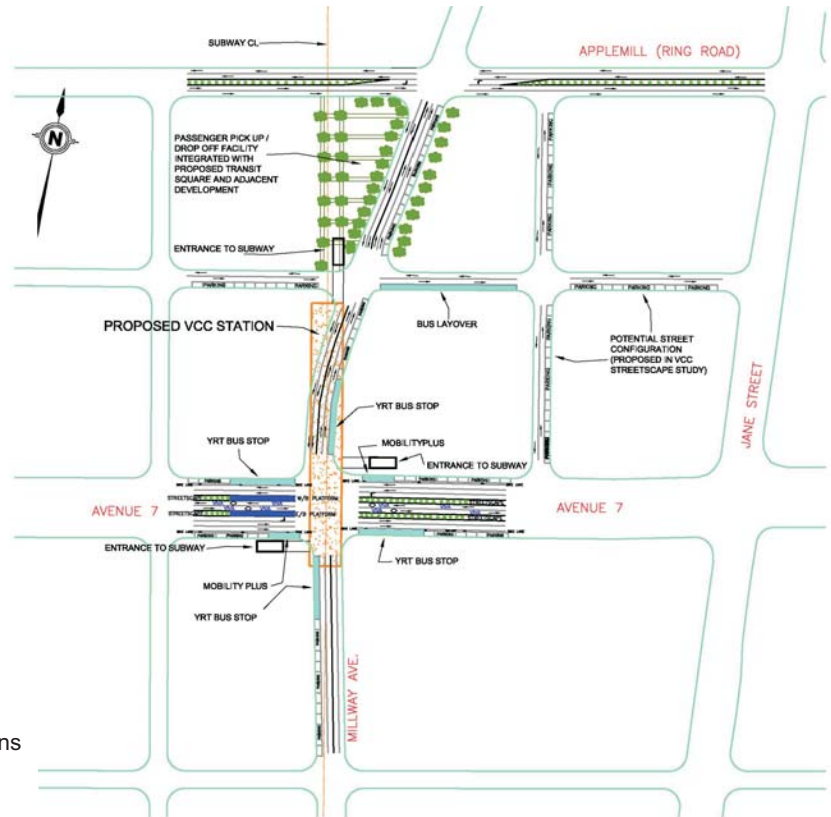
- The increased traffic volume due to private vehicles picking-up and dropping-off passengers will be offset by a greater use of convenient transit (bus routes and subway) for southbound trips.
- Potential traffic congestion around the station at VCC will be mitigated by providing most park-and-ride capacity at 407 station
- Improved transit feeder service (YRT/VIVA) to the subway will provide an alternative to auto use for accessing the subway.
- Terminal Subway Station will enhance VCC urban development plans and promote economic growth in the area.
- Connection and integration of YRT/VIVA bus routes to the Subway will improve convenience and save travel time for transit users.

Socio-economic Environment

- Subway and Station facilities south of Highway 7 will require acquisition of the Millway Avenue road allowance identified in Vaughan OPA 500. The business owner affected will be consulted prior to acquisition in order to develop a method to minimize the effect on business activities.
- Disruption of business activities during construction will be mitigated by appropriate temporary measures and construction techniques to maintain access and circulation in the vicinity of station work.

Natural Environment

- No natural environment features are directly affected by the VCC station design and operation.
- Any effects of dewatering on Black Creek to the east during cut-and-cover construction of the station, crossover and storage tracks will be minimized by use of diaphragm or slurry wall excavation techniques.



Subway VCC Station
Proposed Surface Facilities

