

Welcome
to the
Introductory Public Information Centre
for the
Sutton Water Servicing
Class Environmental Assessment

May 10, 2011
5:30 - 8:30 p.m.



- ❖ Please sign in on the sheet provided.
- ❖ We suggest viewing the display boards in numerical order as they are presented.
- ❖ Please feel free to ask questions of our representatives or offer any comments.
- ❖ Please sign up for the Opportunity Assessment Workshop, if you are interested in taking part.
- ❖ Comment sheets are provided for those who wish to provide comments in writing. Either place your completed sheets in the designated box, or mail/fax/email to the Region's Project Manager listed below:

Keng Wong, P.Eng., PMP
Project Manager
The Regional Municipality of York
Capital Planning & Delivery Branch
Environmental Services Department
17250 Yonge Street
Newmarket, Ontario L3Y 6Z1

Phone: 905 830-4444 ext. 5055
Email: keng.wong@york.ca
Fax: 905 830-6927

2

Purpose of the Public Information Centre

The purpose of this Public Information Centre is to provide information about the project, such as:

- ❖ The Purpose of the Project
- ❖ Background Information
- ❖ A Summary of the Class EA process
- ❖ Next Steps of the study including project schedule

This is also an opportunity for members of the public to provide input.



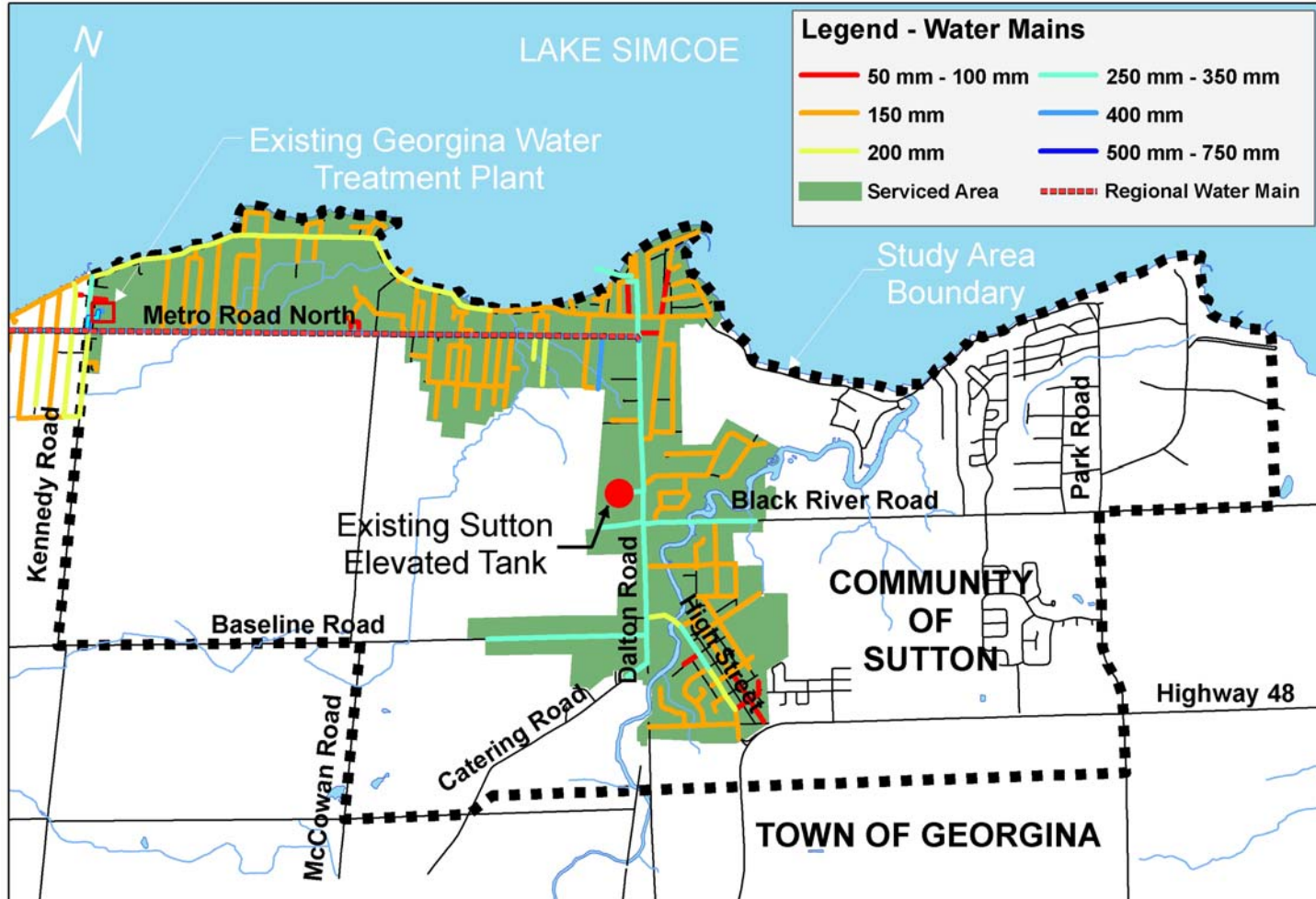
3

Purpose of Project

- ❖ Determine the preferred solution for expanding the existing Regional water system to meet approved growth demands
- ❖ Add watermains and evaluate the need for additional storage
- ❖ Approved growth conforms to:
 - Ontario's Growth Plan for the Greater Golden Horseshoe
 - York Region's Official Plan
 - York Region's Water and Wastewater Master Plan Update
 - Official Plan of the Town of Georgina
 - Sutton/Jackson's Point Secondary Plan



Existing Water Services



5

Needs and Justification for Sutton Water Servicing Expansion

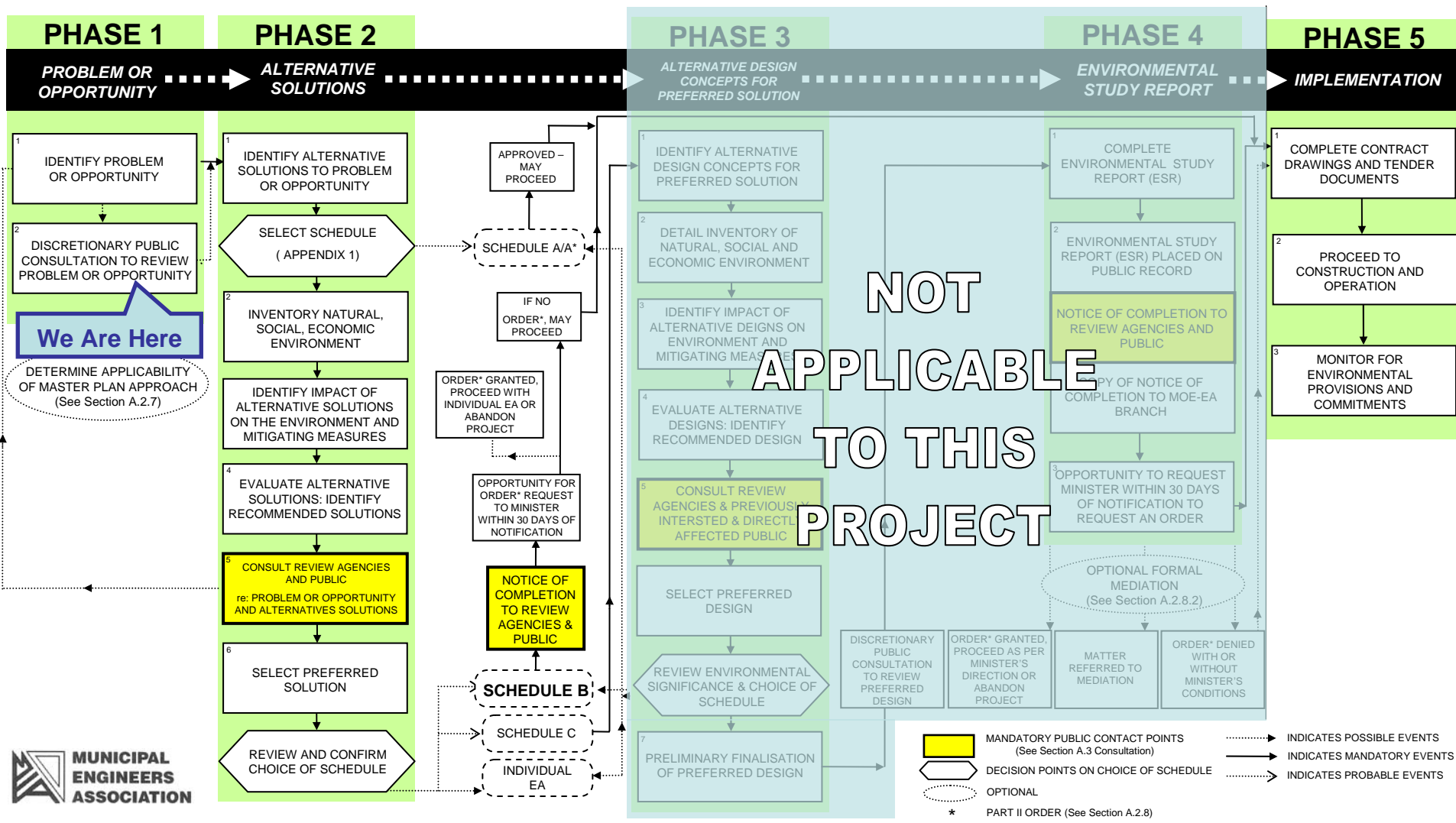


- ❖ Water supply to Sutton is currently supplied by the Georgina Water Treatment Plant (WTP), and serviced by the Sutton Elevated Tank which has a 2.7 ML storage capacity
- ❖ The water system services a population of approximately 5,600 in the community of Sutton, the Sibbald Point Provincial Park, and the lakeshore community
- ❖ The population is projected to increase to approximately 15,150 by the year 2031



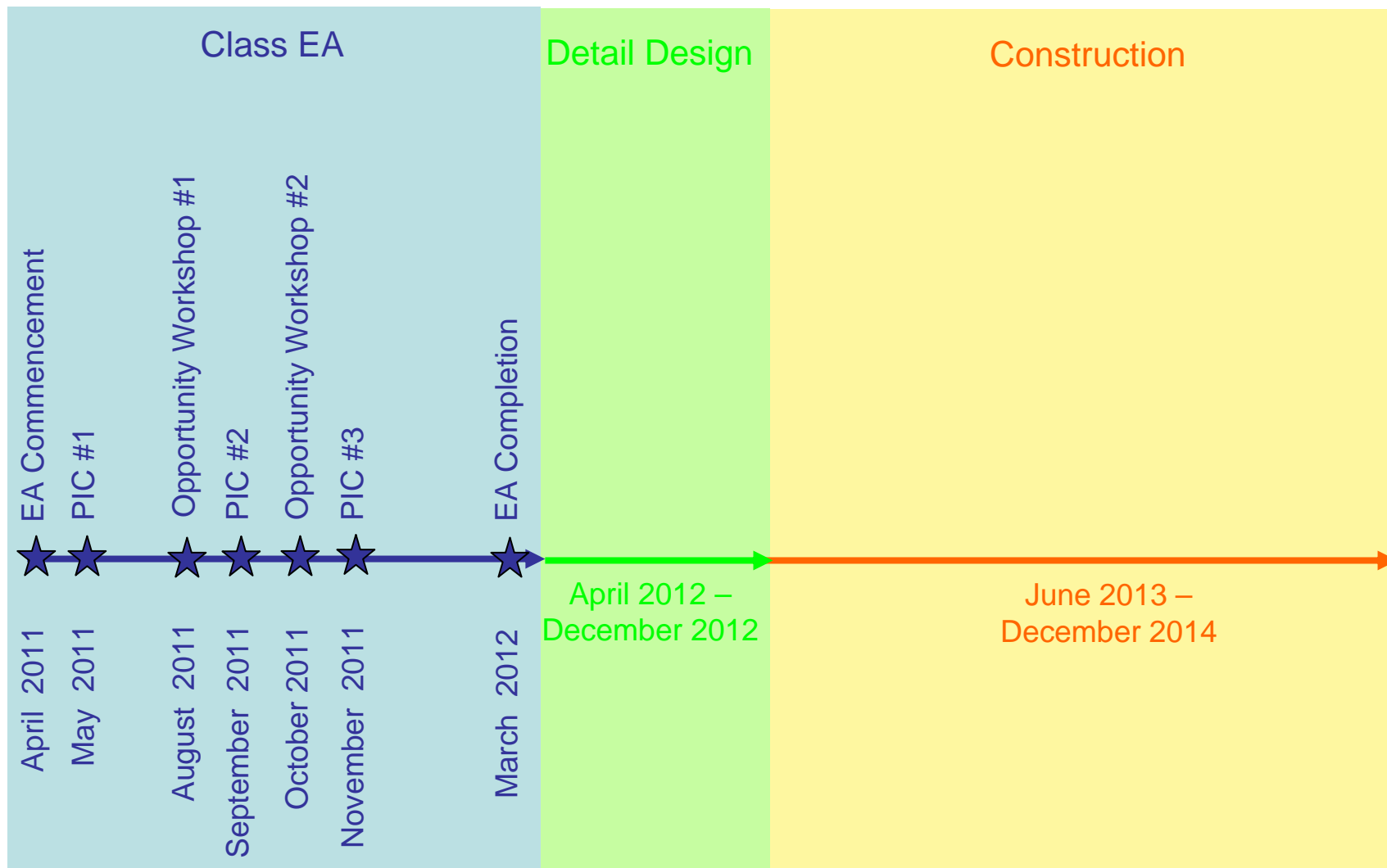
- ❖ An Environmental Assessment examines alternatives and impacts for proposed projects and confirms the best alternative solution
- ❖ The study will determine the preferred solution for expanding the existing Regional water system to accommodate projected growth in the community of Sutton, in the Town of Georgina
- ❖ Input from the Public and Government Agencies is a key component of the study
- ❖ Information gathered during the study will be used to assess the alternatives and develop a recommended solution
- ❖ The Municipal Class Environmental Assessment for Sutton Water Servicing is classified as a Schedule B

7 Class EA Process Overview



NOT APPLICABLE TO THIS PROJECT





Following this Public Information Centre (PIC), the next steps in the Class EA process are:

- ❖ Identifying preliminary alternative solutions
- ❖ Reviewing comments received and comparing to the alternative solutions
- ❖ Establishing inventory of natural and social environment, including:
 - ❖ Archaeological and Cultural Heritage Resources Assessment
 - ❖ Natural Environment Investigation
 - ❖ Geotechnical investigation
 - ❖ Hydrogeological investigation
- ❖ Evaluating Alternative Solutions
- ❖ Opportunity Assessment Workshop scheduled for August, 2011
- ❖ Next PIC scheduled for September, 2011