

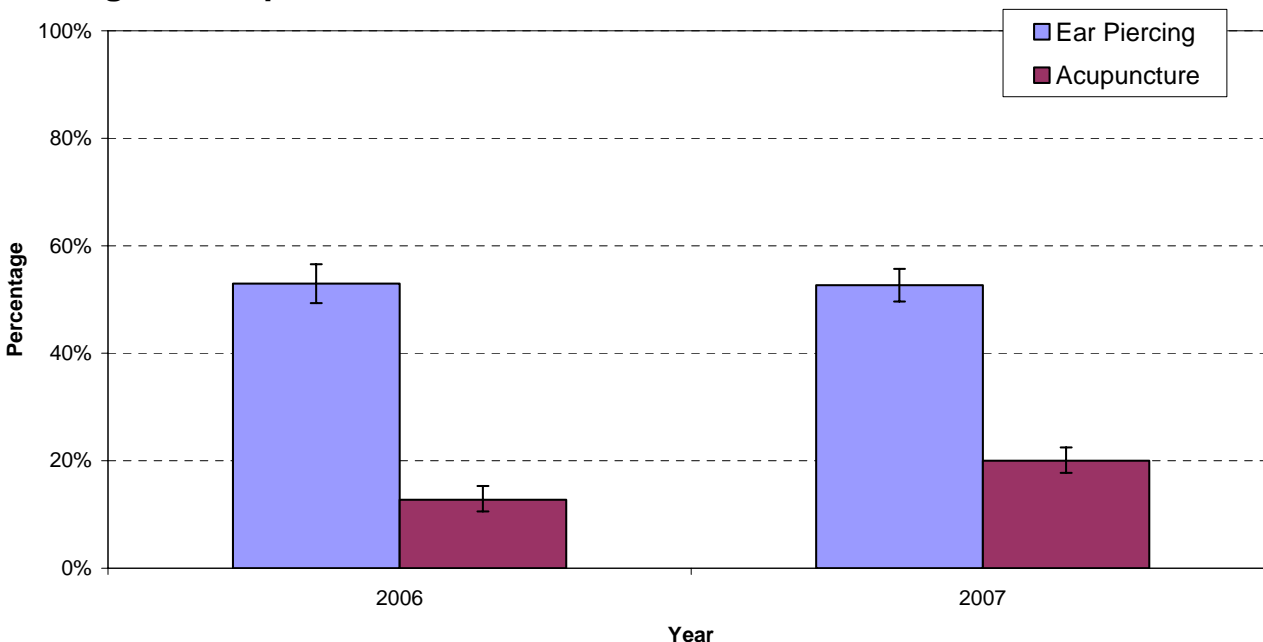
Personal Services Setting

This summary focuses on:

- the percentage of York Region residents receiving personal service procedures; and
- public awareness of local by-laws regarding personal service settings.

Ontario Public Health Standards, Infectious Diseases Program Standards, Infectious Diseases Prevention and Control – Req 3.

Proportion of York Region Residents Who Reported Ever Having Ear Piercings or Acupuncture, 2006-2007

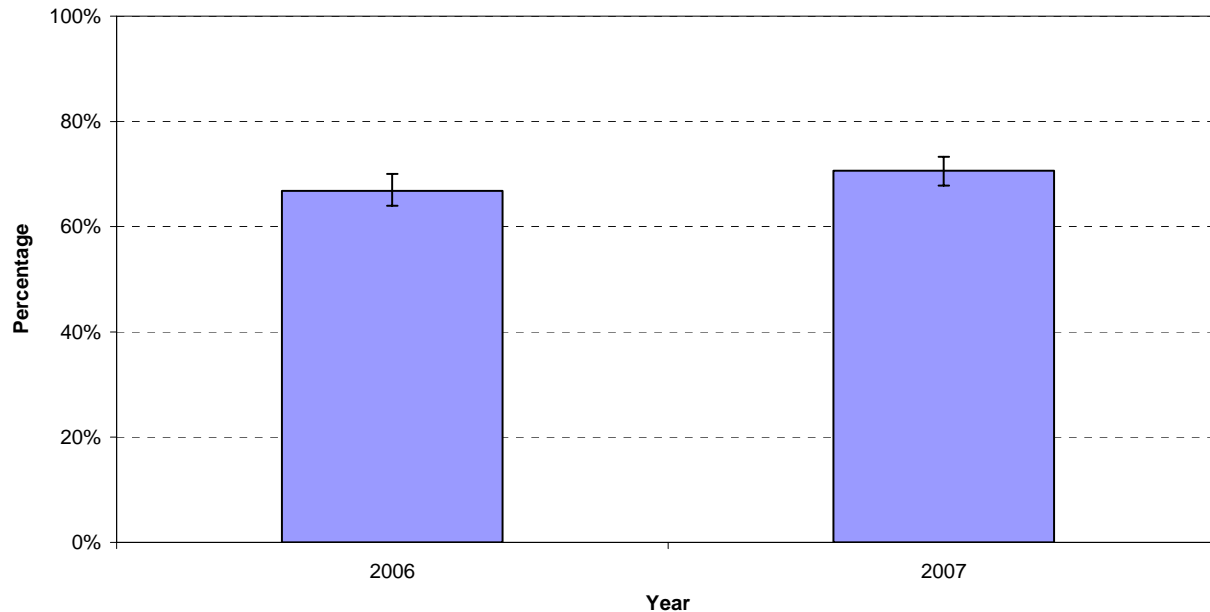


Data Source: Rapid Risk Factor Surveillance System, April 2006 – December 2007

Interpretation:

- In 2007, ear piercing (53% ±4) was the most common personal service procedure reported to have ever been received by York Region residents. Statistically, this percentage is similar to results observed in 2006.
- In 2007, 20% (±3) of residents reported ever having acupuncture. Statistically this percentage is an increase from the 13% (±3) that was reported in 2006.
- Fewer than 1 in 10 residents reported ever having body piercing, electrolysis or tattooing in either 2006 or 2007 (data not shown).
- Consistent across all years of data, more women reported ever having ear piercings or body piercings compared to men (data not shown).
- Fewer residents aged 65 years and older reported ever having their ears pierced compared to the younger age groups (data not shown).
- No differences in the percentage of individuals having ever received various types of personal service procedures were observed across the highest level of education attained (data not shown).

Belief that Personal Service Settings Must be Licensed by the Health Department to Operate, 2006-2007



Data Source: Rapid Risk Factor Surveillance System, April 2006 – December 2007

Interpretation:

- In 2007, 71% (± 3) of residents believed that premises conducting personal service procedures must be licensed by the health department to operate. Statistically, this percentage is similar to results observed in 2006.
- Individuals aged 18-24 years were more likely to believe that personal service settings must be licensed by the health department to operate compared to individuals 45 years of age and older.
- No difference in the percentage of men and women who believed that personal service settings must be licensed by the health department to operate was observed (data not shown).
- No differences in the percentage of individuals who believed that personal service settings must be licensed by the health department to operate were observed across the highest levels of education attained (data not shown).

Data Source: Rapid Risk Factor Surveillance System (RRFSS), [April 2006 – December 2007 (variables PCP_1 to PCP_6)]. For more information on RRFSS, visit <http://www.rfss.ca/>

Adults represent individuals aged 18 years or older. This telephone survey was only administered in English, using a random digit dialling methodology. Data are weighted for the probability of selection in households of different size. Survey indicators are based on self-reported information and may be subject to biases, such as recall bias or social desirability bias, or result in high non-response.

$\bar{\pm}$ and \pm represents the 95% confidence interval, meaning 19 times out of 20 the results will fall within this range. Confidence intervals are reported as equal, though this is not always the case as the estimate approaches zero or 100%.