
DRAFT
York Region Official Plan

Public Information Sessions
September, 2009



Provincial and Regional Planning Context has changed since 1994

□ Provincial Planning Context

- Oak Ridges Moraine Conservation Plan
- Updated Population & Employment Forecasts
- Greenbelt Plan
- Places to Grow Plan
- Source Water Protection
- Metrolinx
- Lake Simcoe Protection Plan

□ Many Regional Successes

- Sustainability Strategy, VIVA, Water for Tomorrow, Greening Strategy

□ *Places to Grow* has provided an opportunity to update the Regional Official Plan

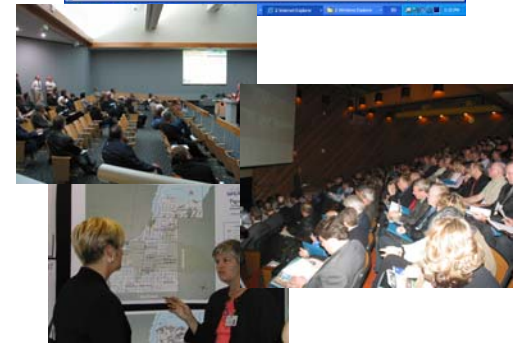


Integration, collaboration and coordination of Regional studies



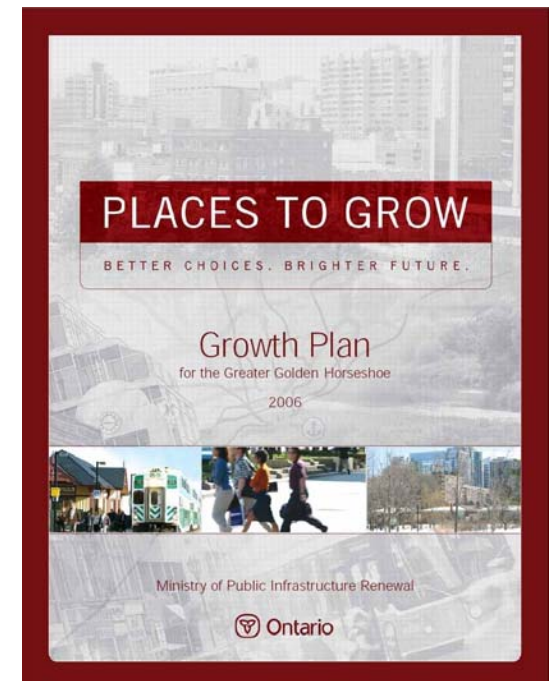
Planning for Tomorrow sets stage for the ROP Update

- ❑ Extensive series of technical reports since 2005 (available on website)
- ❑ *Planning for Tomorrow* ongoing over past 3 years
- ❑ Three phase consultation program



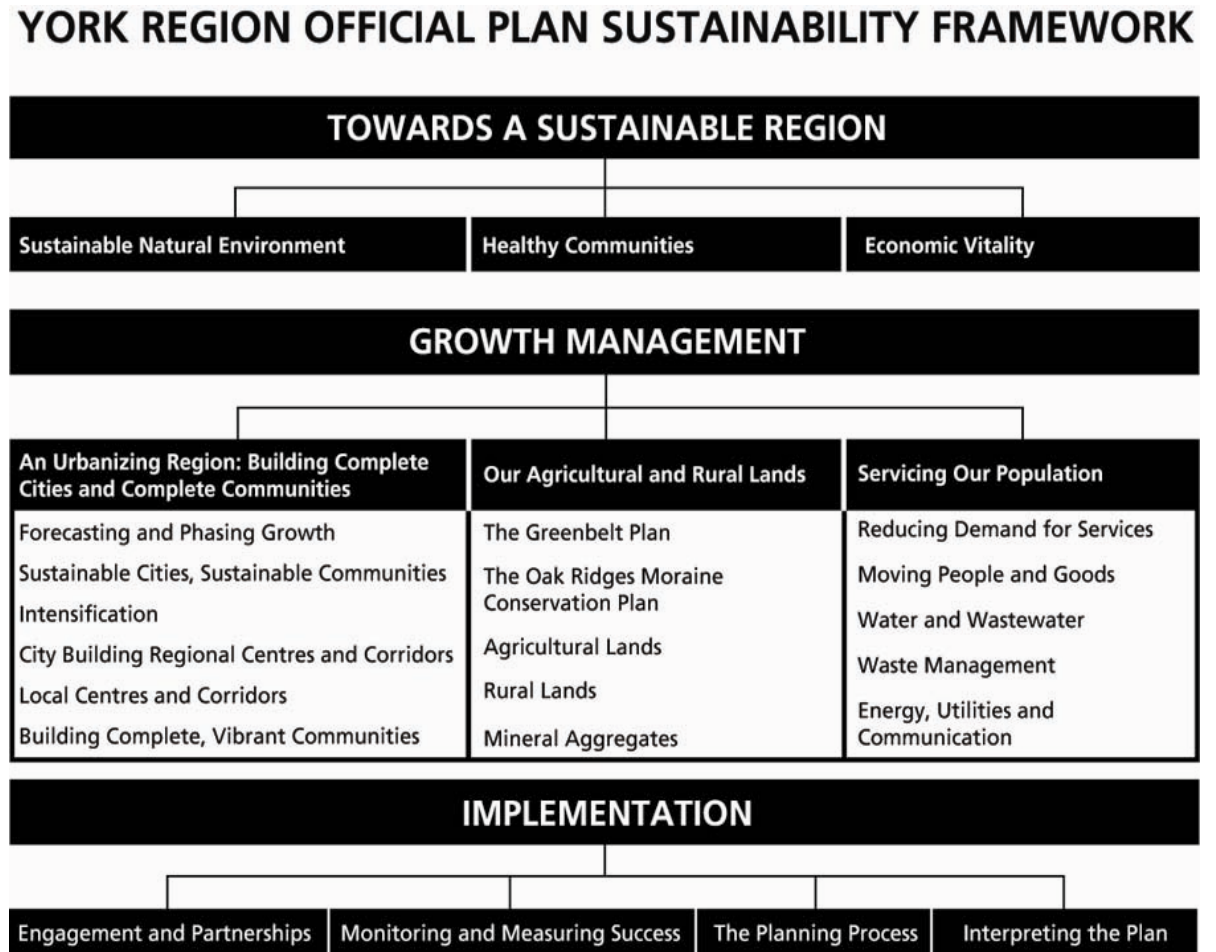
Places to Grow Conformity

- ❑ Regional Official Plan conforms with Places to Grow and Greenbelt Plans
- ❑ Council has chosen to do a comprehensive, integrated, public focussed update of the Regional Official Plan



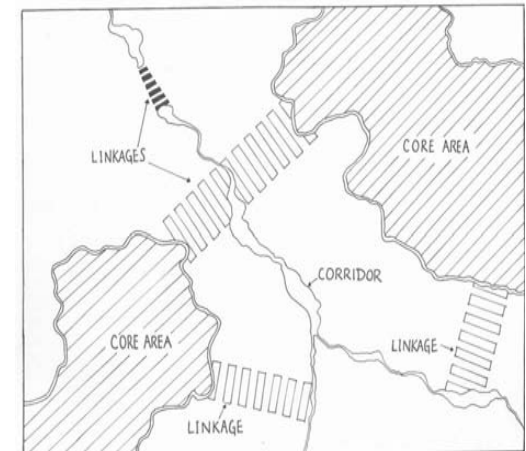
ROP Structure

- 1994 Structure was based on sustainability
- Forward looking has stood the test of time



A Sustainable Natural Environment

- ❑ 69% of Region in ORM and Greenbelt
- ❑ Emphasis on a linked Greenlands System
- ❑ Continued investment in Greenlands System – Region Securement Program
- ❑ Context sensitive design of Infrastructure to enhance system
- ❑ Strengthen Greenlands links in new community areas



St. John's Sideroad context sensitive design

A Sustainable Natural Environment

- ❑ Natural Heritage and Hydrologic Feature Protection
- ❑ Significant Woodlands included in Plan
- ❑ Lake Simcoe, Natural Hazards and Watershed Planning
- ❑ Emphasis on alternative methods of Stormwater Management



Healthy Communities

- ❑ Promotion of Healthy, Active Lifestyles
- ❑ Recognize that Health is related to community design
- ❑ Air Quality & Climate Change
- ❑ Co-ordination of human services delivery and community design
- ❑ Recognize cultural heritage and Regional Archaeological Master Plan



Healthy Communities

- ❑ Require a mix and range of housing types and tenures
- ❑ Update Housing Requirements Study
- ❑ Require 25% of new housing units be *affordable*, 35% in Regional Centres and Corridors
- ❑ Require “as-of-right” Secondary Suites Policies



Economic Vitality

- ❑ Implement Economic Strategy
- ❑ Forecast: 780,000 jobs by 2031
- ❑ Promote green clusters, tourism, and knowledge based industry
- ❑ Recognize Centres and Corridors as a focus for office, cultural and entertainment uses
- ❑ Identify a 20 year supply of employment lands
- ❑ Conversion of employment lands not permitted
- ❑ Identify and protect strategic employment lands beyond 2031



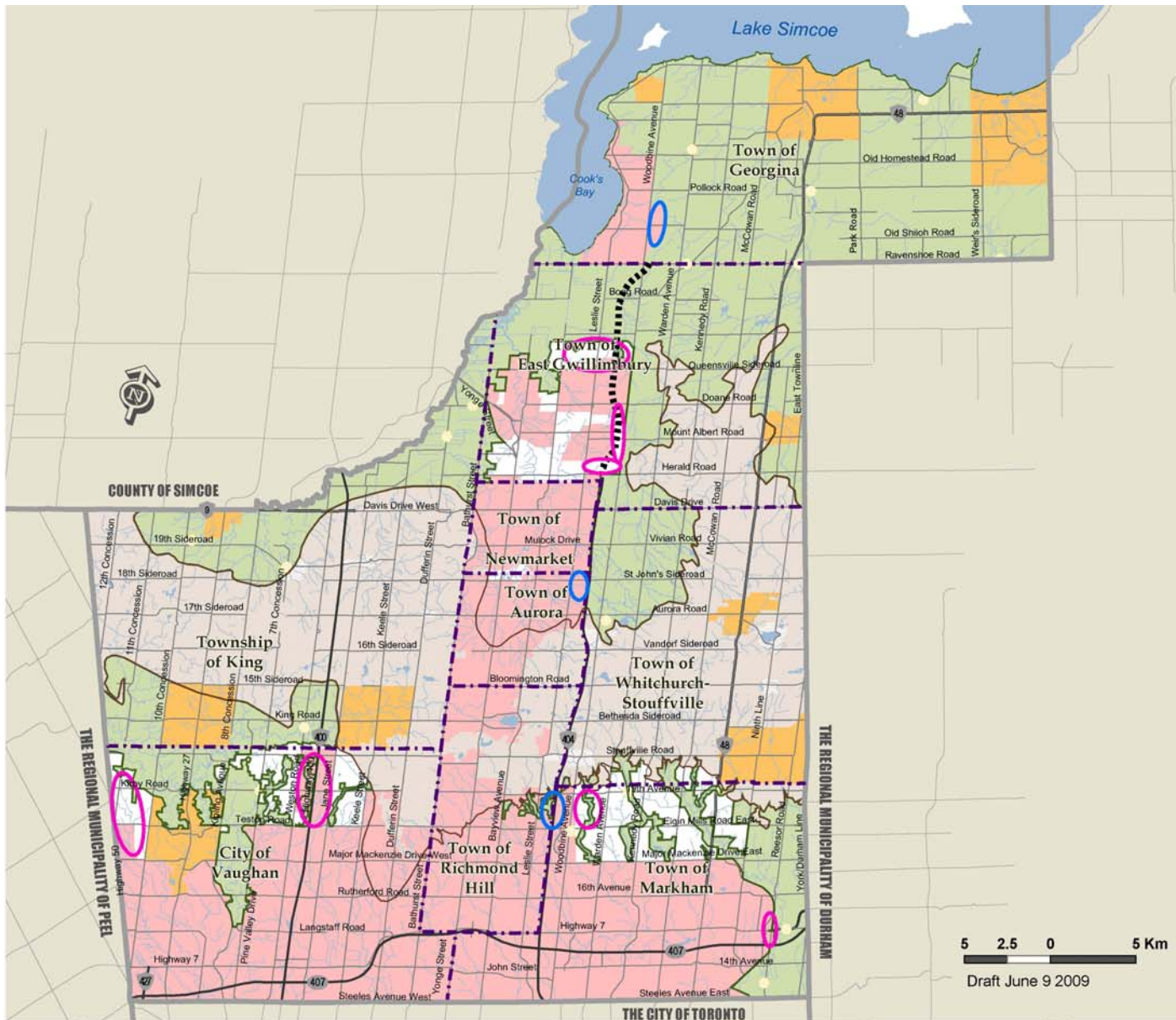


Figure 2
YORK REGION
STRATEGIC
EMPLOYMENT LANDS

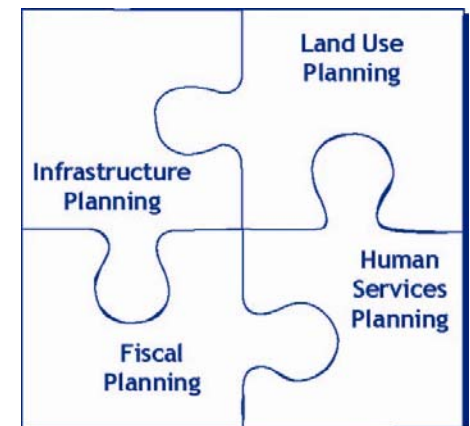
-  Designated Strategic Employment Lands
-  Future Strategic Employment Lands (Conceptual)
-  Urban Area
-  Towns and Villages
-  Hamlet
-  Oak Ridges Moraine Conservation Plan
-  Oak Ridges Moraine Boundary
-  Oak Ridges Moraine Plan Area
-  Greenbelt Plan
-  Greenbelt Plan Area Boundary
-  Greenbelt Protected Countryside / Hamlet
-  Provincial Highways
-  Existing
-  Under Construction
-  Municipal Boundary
-  Regional Boundary



Produced by: Geomatics
 Planning and Development Services Department
 © Copyright, The Regional Municipality of York, June, 2009
 © Copyright, The Regional Municipalities of Durham and Peel, County of Simcoe, City of Toronto
 © Queen's Printer for Ontario 2003-2009. Includes Greenbelt and Oak Ridges Moraine Boundaries and Water Features

Economic Vitality

- ❑ Integrate retail into community design
- ❑ Major retail not permitted in employment lands
- ❑ Economic/Fiscal Analysis for each Secondary Plan
- ❑ 25 Year Fiscal Impact
- ❑ Advocate for new funding formula/sources for municipalities
- ❑ Greenbelt review policy in 2015 to consider employment lands



An Urbanizing Region: Building Cities and Complete Communities

- ❑ Plan conforms with Places to Grow and the Greenbelt Plans
- ❑ Forecasts: 1.5 million people & 780,000 jobs by 2031
- ❑ 3 - 7 year supply of housing
- ❑ Careful phasing of new community development including substantially complete (75%) before next phase
- ❑ Local Municipality required to prepare an intensification strategy

Table 2: York Region Residential Intensification Targets by Local Municipality 2006-2031

	Units
Aurora	3,140
East Gwillimbury	1,030
Georgina	2,690
King	920
Markham	31,590
Newmarket	5,250
Richmond Hill	15,300
Vaughan	29,300
Whitchurch-Stouffville	1,500
York Region	90,720

*NOTE: Figures may not add due to rounding.

Table 1
York Region Population and Employment
Forecast by Local Municipality

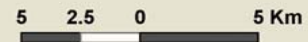
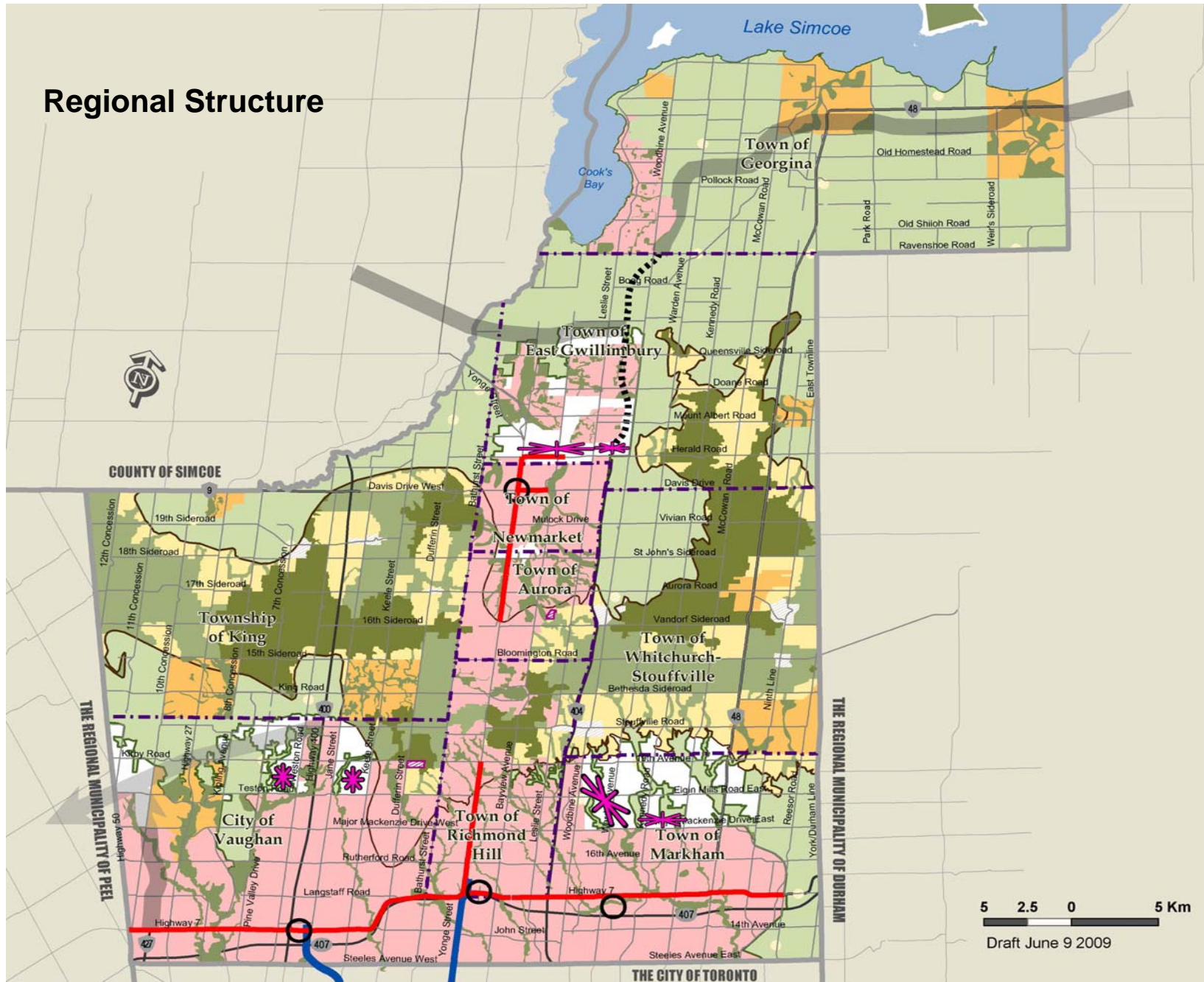
	2006	2011	2016	2021	2026	2031
Aurora						
Population	49,600	57,300	63,700	68,200	69,700	70,400
Employment	20,300	24,200	29,000	32,400	33,500	34,200
East Gwillimbury						
Population	21,900	26,300	34,700	48,300	66,800	88,000
Employment	5,900	7,100	11,600	18,700	26,500	34,400
Georgina						
Population	44,500	48,700	52,800	58,000	64,100	70,700
Employment	8,000	9,000	11,000	13,900	17,300	21,200
King						
Population	20,300	23,400	27,000	29,900	32,600	35,100
Employment	7,100	7,800	9,700	11,000	11,500	11,900
Markham						
Population	272,500	303,500	337,800	370,500	399,100	423,500
Employment	144,800	170,500	200,300	221,500	231,300	240,600
Newmarket						
Population	77,400	84,000	88,700	91,900	94,600	97,300
Employment	42,100	45,400	47,600	48,700	49,100	49,400
Richmond Hill						
Population	169,500	195,000	216,900	231,500	239,400	242,800
Employment	61,100	72,600	86,100	94,300	97,400	99,400
Vaughan						
Population	248,800	294,200	329,100	360,600	389,700	418,800
Employment	162,200	193,700	226,000	248,900	257,600	266,100
Whitchurch-Stouffville						
Population	25,400	38,700	49,400	55,800	59,200	60,800
Employment	10,900	14,200	19,200	22,000	22,700	23,000
York Region						
Population	929,900	1,071,100	1,200,100	1,314,700	1,415,200	1,507,400
Employment	462,300	544,600	640,500	711,300	746,900	780,300

An Urbanizing Region

- ❑ Detailed criteria and Secondary Plans for Centres, Corridors and New Community Areas
- ❑ Required LEED standards, or equivalent, for mid to high rise and for development in New Community Areas
- ❑ Encourage LEED in industrial buildings
- ❑ Community Energy Plans required for Centres, Corridors and New Community Areas
- ❑ 2.5 FSI for Centres and Corridors, 3.5 FSI at major Subway Stations
- ❑ Collaborative planning for New Community Areas based on 70 people and jobs/ha
- ❑ Work with local municipalities to identify Urban Area Expansions



Regional Structure



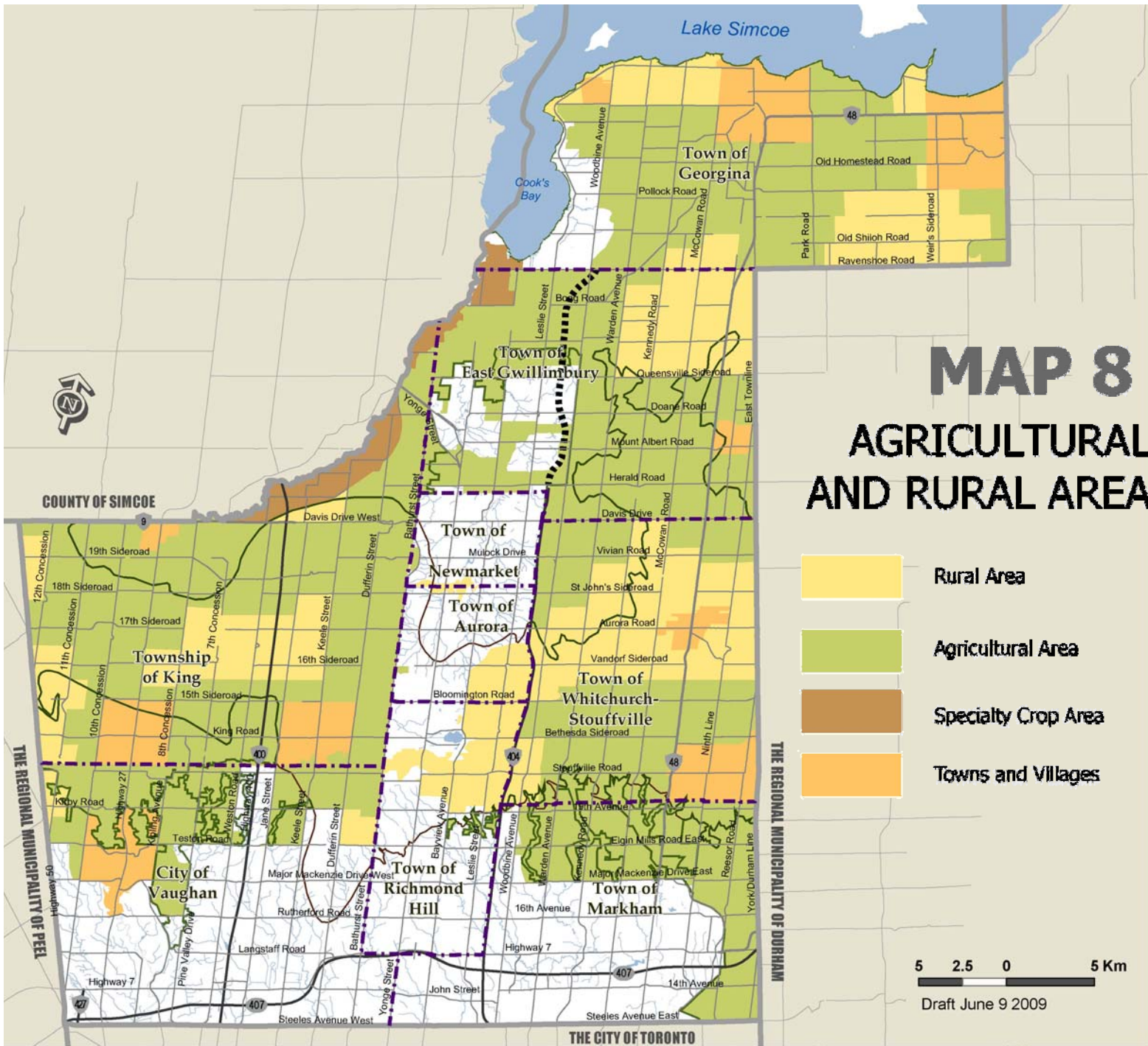
Draft June 9 2009

Agricultural and Rural Areas

- ❑ Policies to ensure Greenbelt Plan and ORM Plan conformity
- ❑ Policies to support Agriculture and Local Food Production
- ❑ Very little development allowed in Rural Area
- ❑ Development directed to Towns and Villages
- ❑ Development in Hamlets limited to minor infill
- ❑ Policies protecting Mineral Aggregate Resource Areas
- ❑ Agricultural and Rural designation based on Land Evaluation and Area Review (LEAR)



Holland Marsh Specialty Crop Area



Servicing Our Population

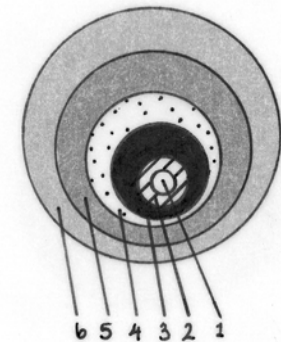
- ❑ Focus on reducing demand for services i.e. trip reduction and water use
- ❑ Focus on Active Transportation – walking and cycling
- ❑ Incorporation of Master Plans
- ❑ Urban Area Modal Split Target of 30% and 50% in Regional Centres and Corridors



Servicing Our Population

- ❑ Revised street width map
- ❑ Identification of 400 series interchanges and flyovers
- ❑ Update Regional Street Design Guidelines
- ❑ Updated Goods Movement and Airports Policy
- ❑ Water and Wastewater Master Plan Policies
- ❑ Wellhead and Intake Protection
- ❑ 90% waste diversion by 2016
- ❑ Energy and Utilities Policies

Wellhead Protection Area Schematic



1. ACTIVE WELLHEAD
2. 100 METRE ZONE
3. 0-2 YEAR ZONE
4. 2-5 YEAR ZONE
5. 5-10 YEAR ZONE
6. 10-25 YEAR ZONE



MINIMUM LANDFILL DISPOSAL

Implementation

- ❑ Ongoing public consultation
- ❑ Annual monitoring of progress
- ❑ Partnership with Local Municipalities and Stakeholders



Next Steps

- ❑ Draft Regional Official Plan
released June 17, 2009
- ❑ Stakeholder consultation summer/fall
- ❑ 4 Public Meetings
- ❑ Presentations to Local Municipal Councils
- ❑ Stakeholder meetings
- ❑ Statutory Meeting October 7
- ❑ Report back to Committee and Council
November 2009