



Economic Indicators

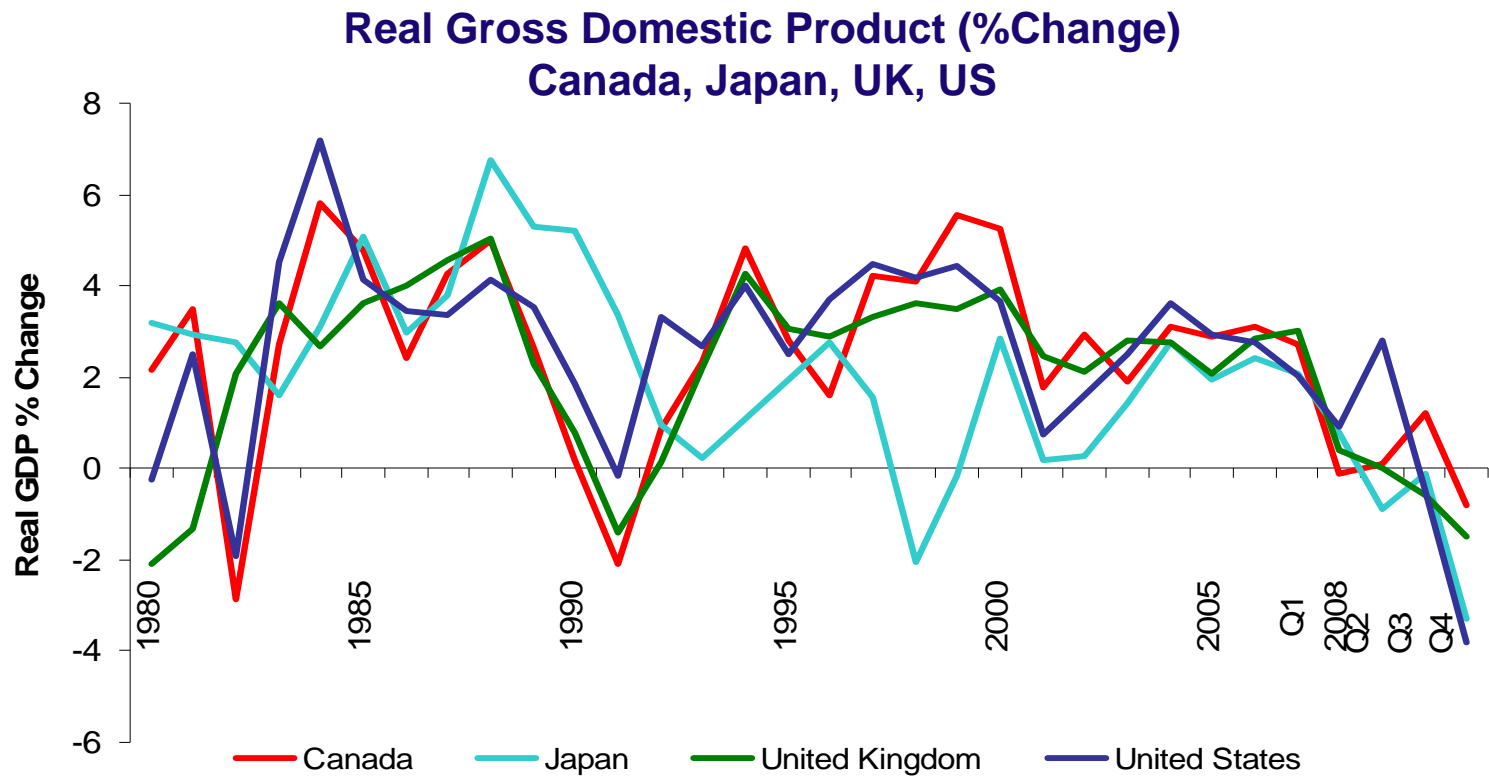
Presentation

at

Planning & Economic
Development Committee

Patrick Draper – April 8, 2009

Global GDP Economic Trends

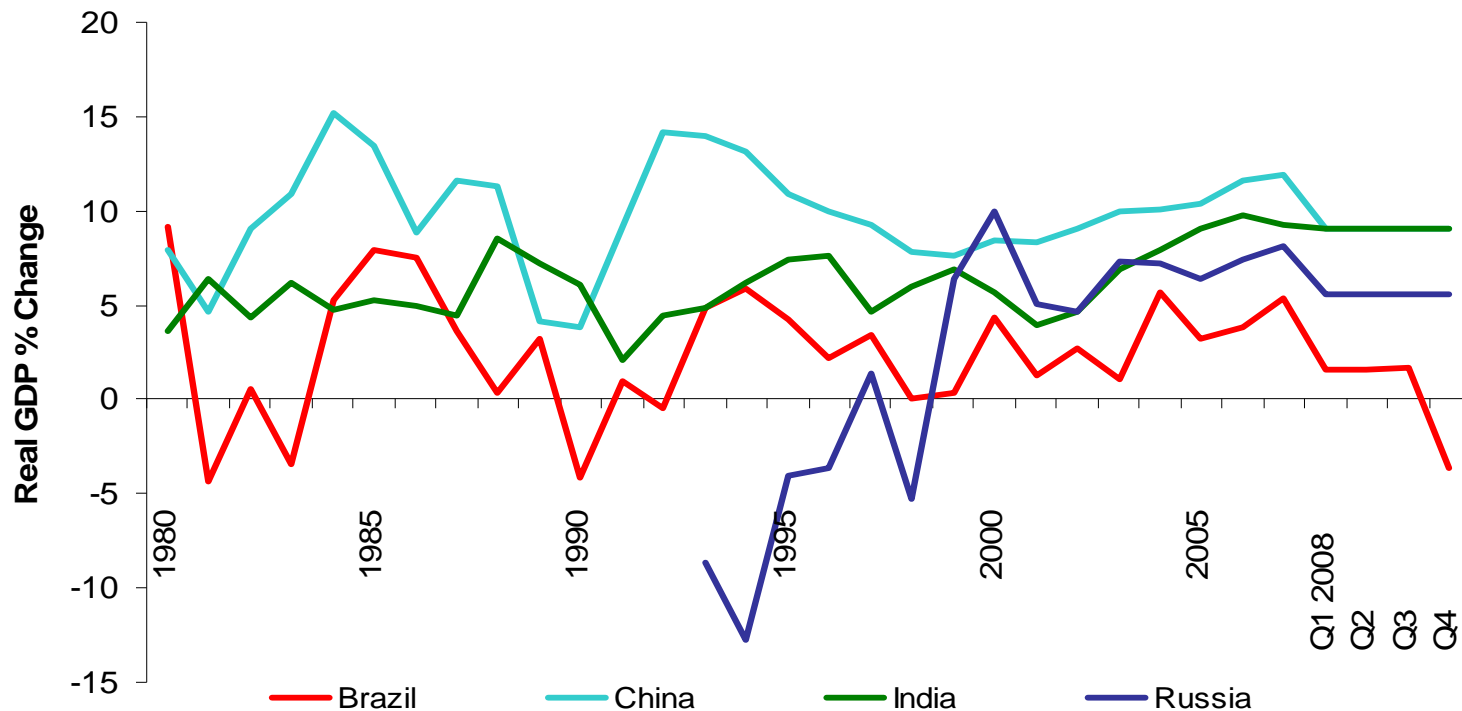


Source: International Monetary Fund, World Economic Outlook Database

Global GDP Economic Trends



**Real Gross Domestic Product (%Change)
Brazil, Russia, India, China**

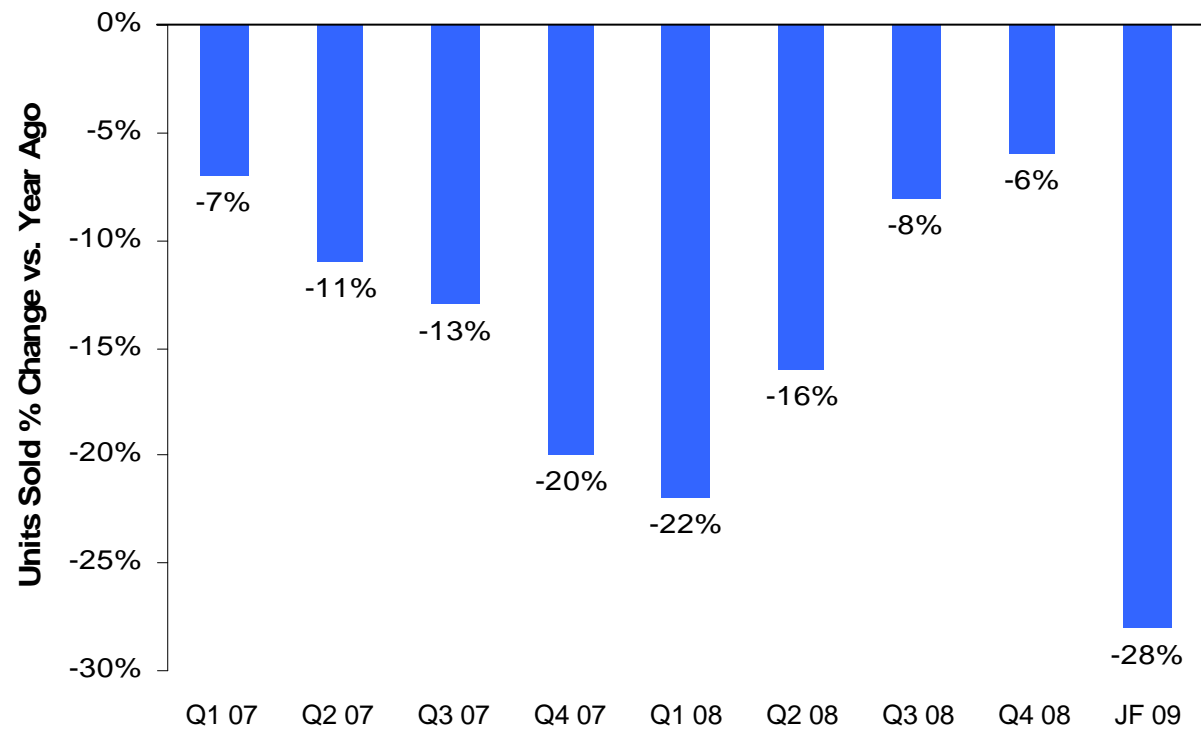


Source: International Monetary Fund, World Economic Outlook Database

Key USA Economic Indicators



**US Quarterly Home Re-sales 2007 – 2008
(% Change vs. YA)**

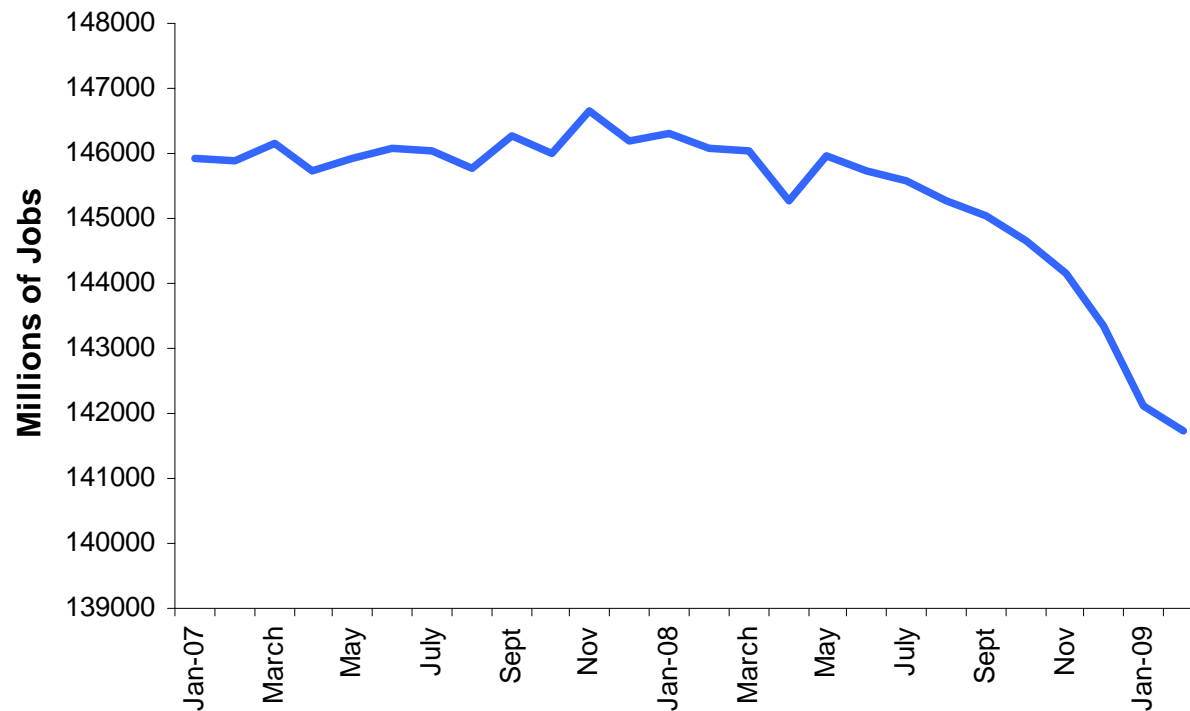


Source: US Real Estate Association

Key USA Economic Indicators



US Employment Trends 2007 – 2009 (#M)

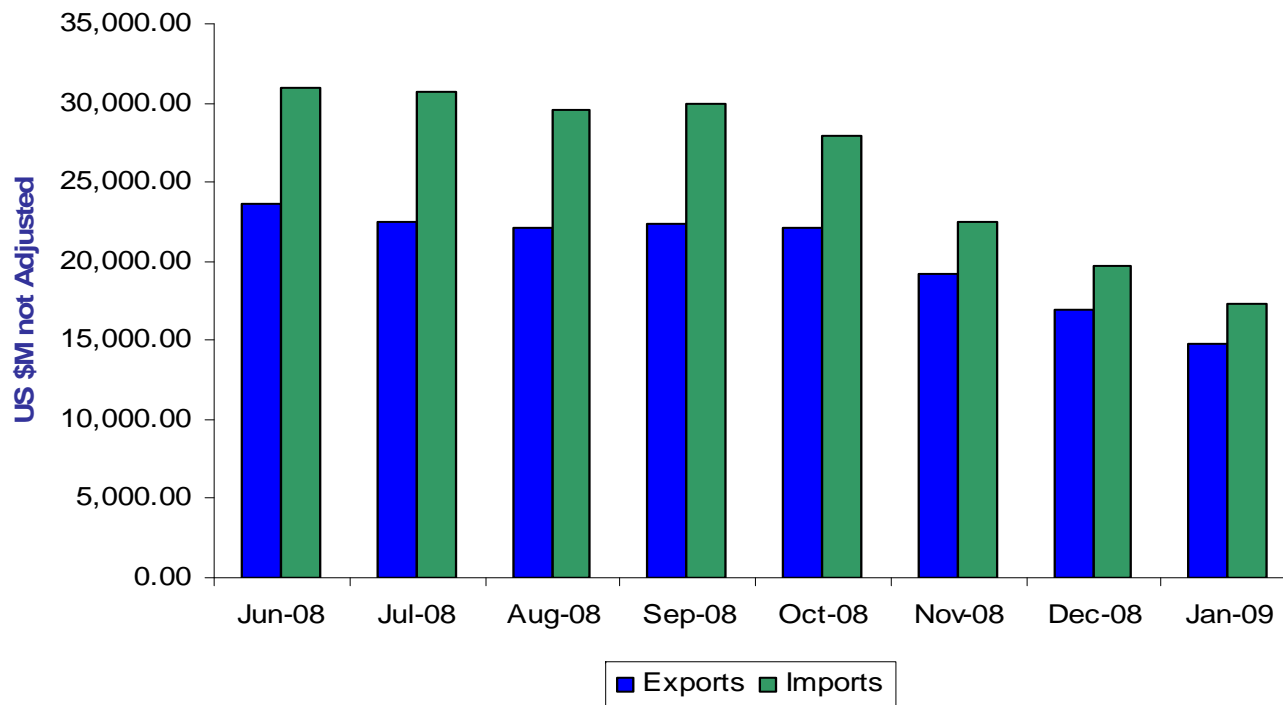


Source: US Bureau of Economic Research

Key USA Economic Indicators



**US Exports and Imports with Canada
June 2008 – January 2009**

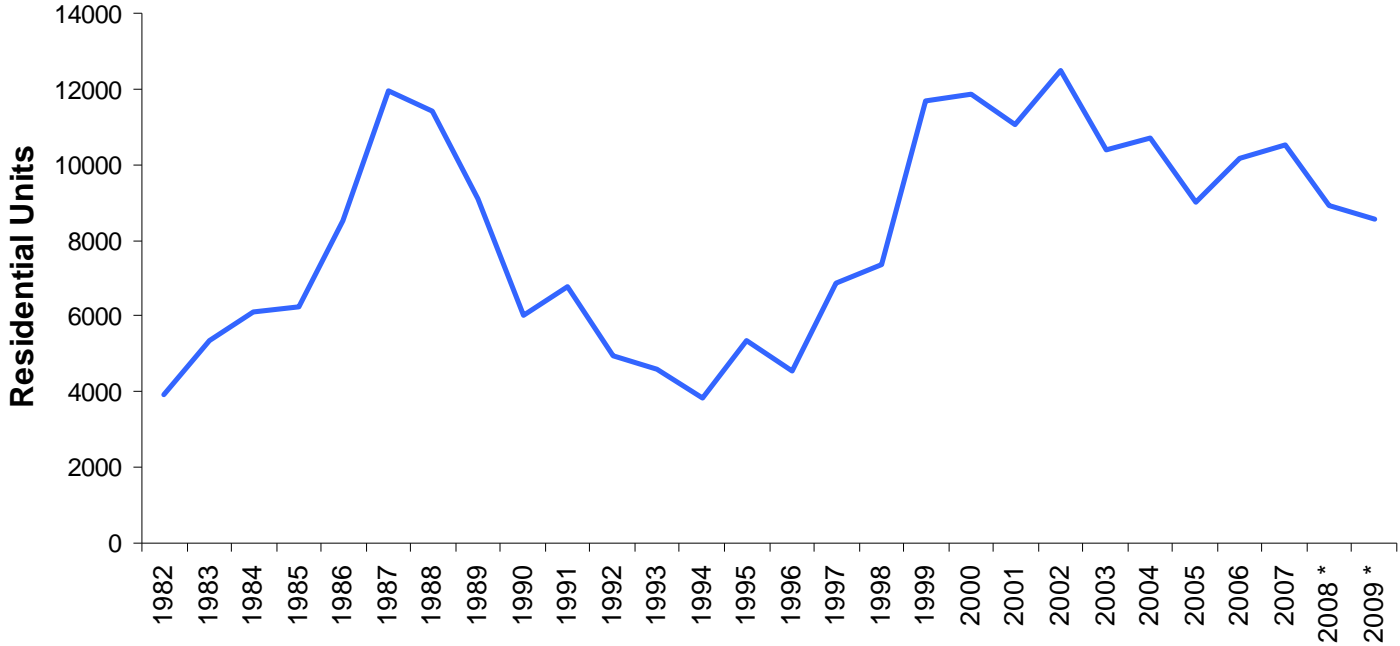


Source: US Bureau of Economic Research

York Region Residential Building



Historical Residential Completion (Units)



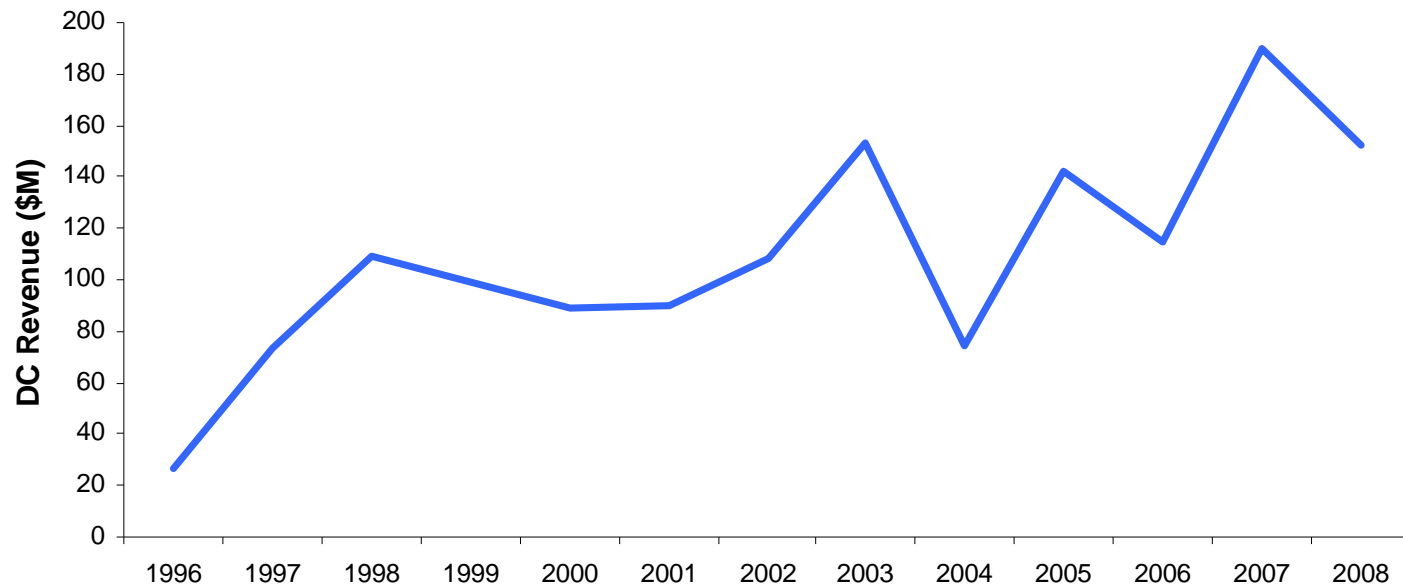
Source: York Region



York Region DC Revenue



Historical Development Charge Revenue (\$M)

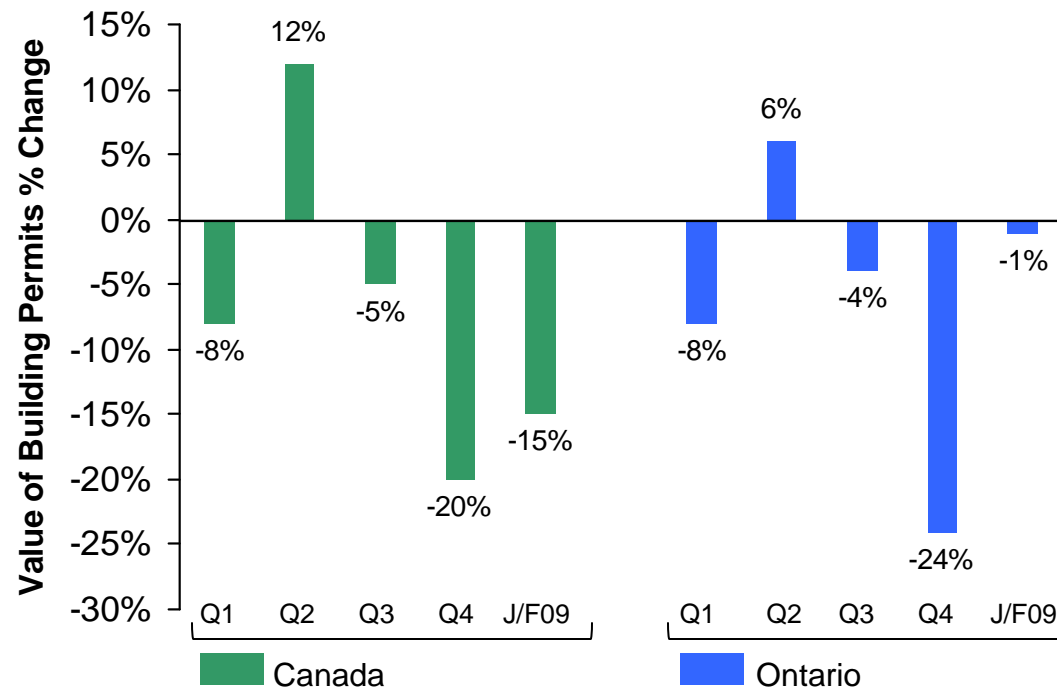


Source: York Region

National & Ontario Building Permits



**Value of Building Permits
Seasonally Adjusted (% Change vs. previous period)**

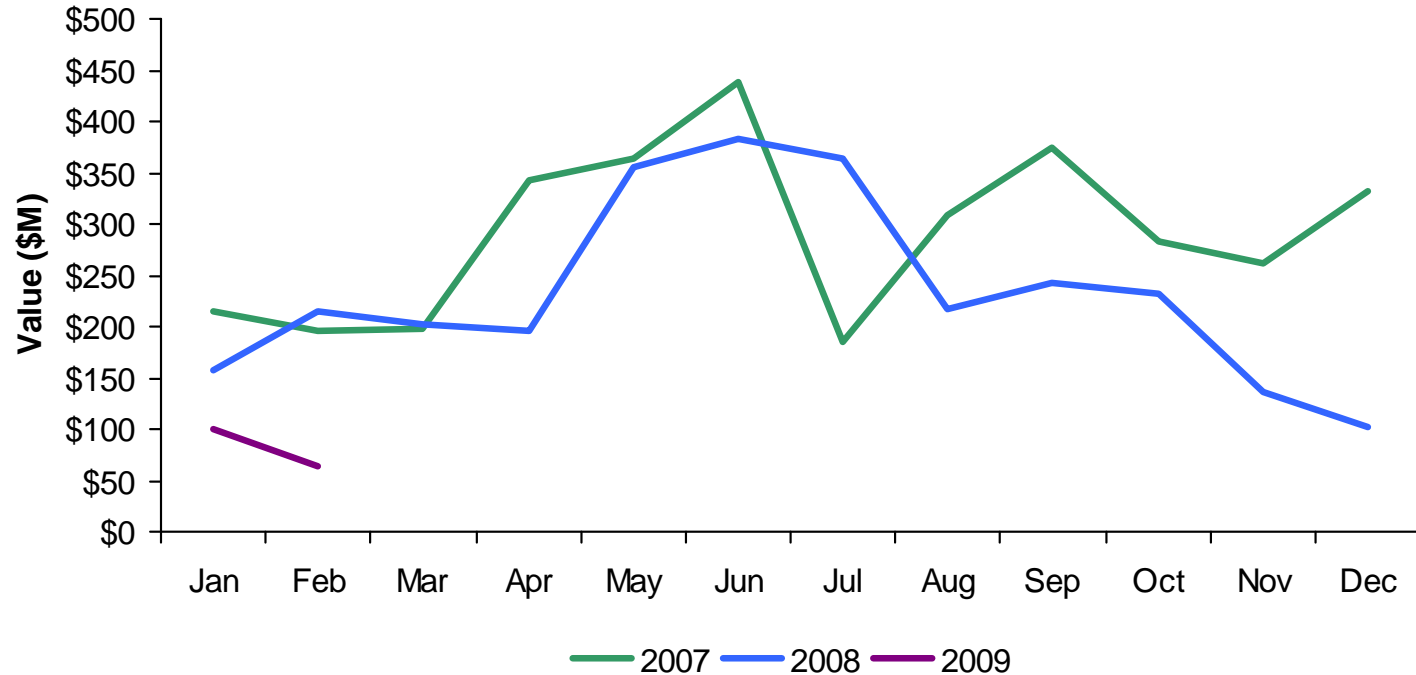


Source: Statistics Canada

York Region Building Permits



Total Value of Building Permits (\$M)



Source: York Region

Building Permits by Municipality



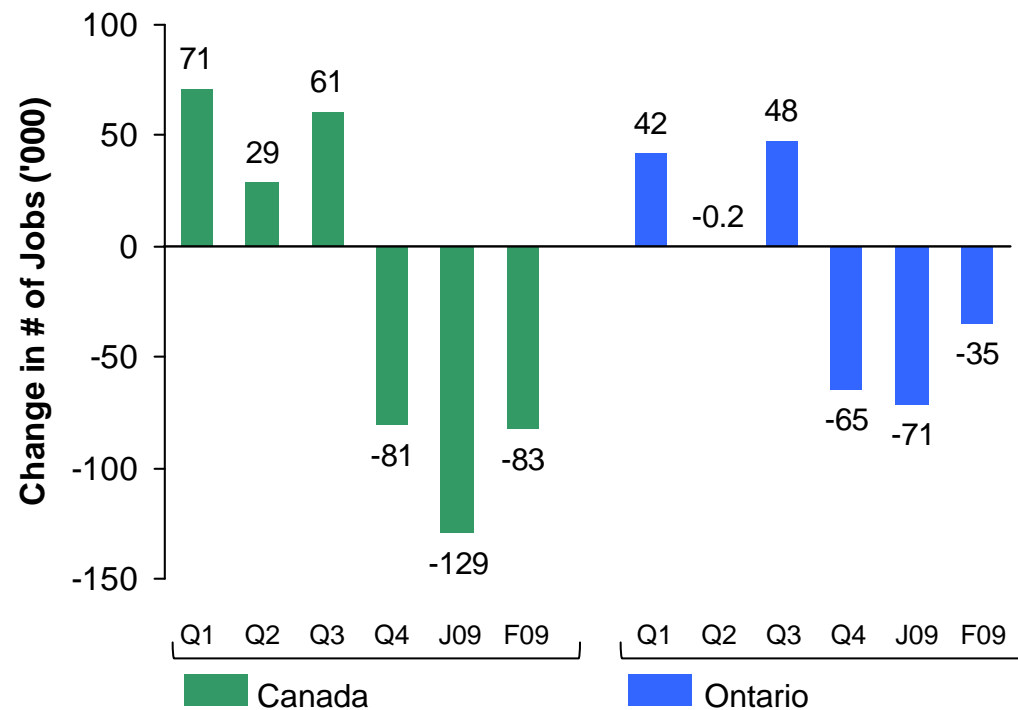
Q4 2008 % VYA	Residential (\$M)	ICI (\$M)	Total (\$M)	%VYA
Aurora	\$28.0	\$1.5	\$29.5	4%
East Gwillimbury	\$4.1	\$1.0	\$5.1	8%
Georgina	\$5.0	\$0.2	\$5.2	-63%
King	\$2.9	\$3.3	\$6.2	-36%
Markham	\$58.5	\$57.9	\$116.4	-57%
Newmarket	\$41.2	\$5.0	\$46.2	126%
Richmond Hill	\$8.2	\$21.8	\$30.0	-47%
Vaughan	\$139.8	\$32.7	\$172.5	-59%
Whitchurch Stouffville	\$35.4	\$22.6	\$58.0	28%
Total York Region	\$323.1	\$146.0	\$469.1	-46%

Source: York Region and Local Municipalities

National & Ontario Employment



Change in # of Jobs '000
Seasonally Adjusted (vs. previous period)

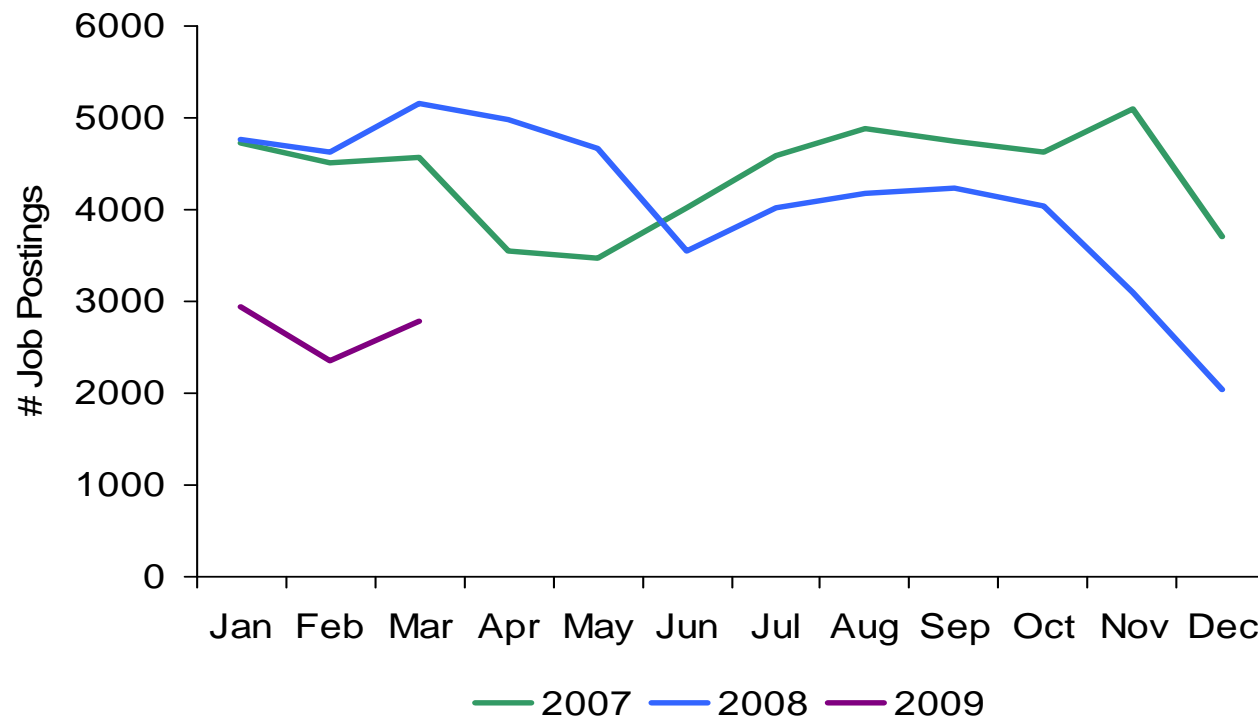


Source: Statistics Canada

York Region Advertised Job Postings



Monthly Total Job Postings (#)



Source: York Region

Advertised Job Postings by Municipality



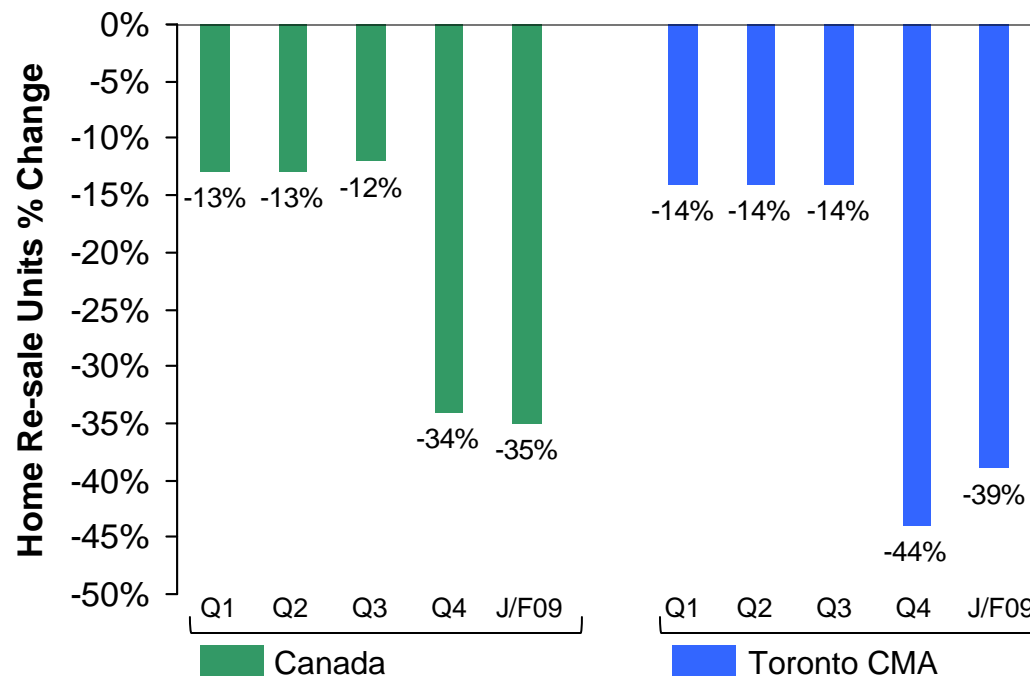
Q1 2009	# Jobs Posted	% VYA
Aurora	378	-61%
East Gwillimbury	8	-85%
Georgina	44	-42%
King	69	-57%
Markham	3055	-36%
Newmarket	1002	-49%
Richmond Hill	1200	-40%
Vaughan	990	-63%
Whitchurch Stouffville	62	-69%
Total York Region	8067	-44%

Source: York Region

National & Toronto CMA Home Re-sales



**Quarterly Home Re-sales
(% Change vs. YA)**

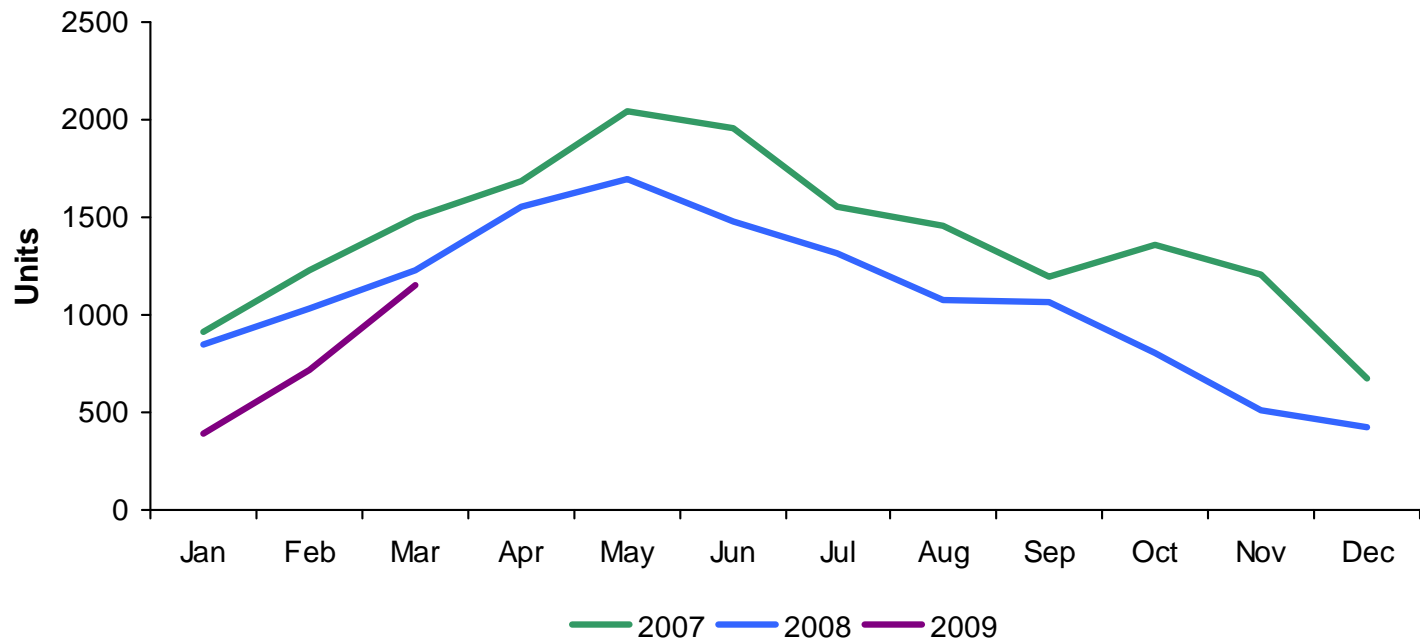


Sources: CMHC, CREA and TREB MLS

York Region Home Re-sales



Monthly Total Home Re-sales (#)



Source: TREB MLS

Home Re-sales by Municipality



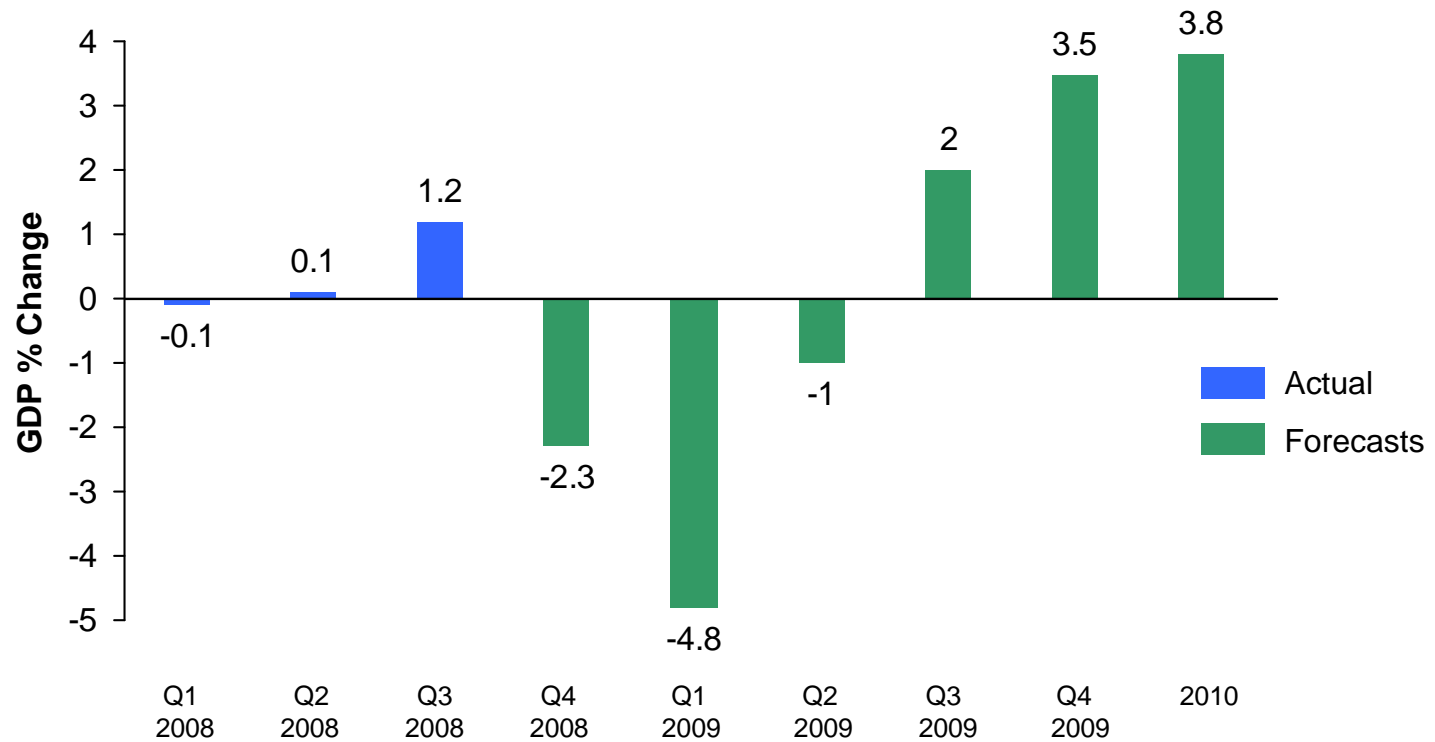
Q1 2009	# Home Re-sales	% VYA
Aurora	121	-32%
East Gwillimbury	39	-9%
Georgina	123	-32%
King	31	-6%
Markham	612	-23%
Newmarket	229	-15%
Richmond Hill	534	-38%
Vaughan	508	-23%
Whitchurch Stouffville	61	-36%
Total York Region	2,258	-28%

Source: TREB MLS

Bank of Canada GDP Forecasts



Canadian GDP Growth



Source: Statistics Canada and Bank of Canada January 22, 2009

Going Forward

Continue to share relevant information

- Monthly updates to Committee
- Presentation to local CAO's February 27th
- Presentation to local EDO's March 6th
- Track key measures and benchmark York Region
 - Housing re-sales
 - Employment trends
 - Building permits



