

# Transportation & Works Overview

---

## Services We Provide

To plan and provide safe, cost-effective, quality driven and integrated public transit, roads, water, wastewater, solid waste diversion & disposal, forestry and other related services which support environmental sustainability, public safety and economic vitality, while meeting Region growth and the expectations of Regional residents and businesses.

## Our Customers

The Department's customers include a broad cross-section of Regional Residents, Businesses, Area Municipalities and Visitors as related to Transit, Roads, Forestry, Water & Wastewater and Solid Waste Management.

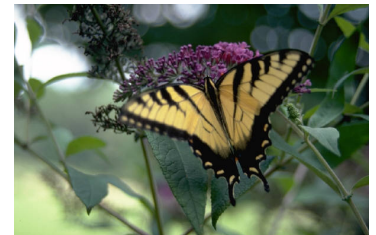


## Services That We Provide

**Transit** – Plan and operate region-wide system of buses and local carriers integrated with TTC and GO Transit.

**Roads** – Plan, design, construct and operate region-wide road system.

**Forestry** – Manage 2070 Hectares (5300 Acres) of regional forests. (The Forestry section is included in the Roads Business Unit).



## Water & Wastewater

– Plan, design, construct and operate bulk water distribution and wastewater collection system in partnership with the local municipalities in the Region.

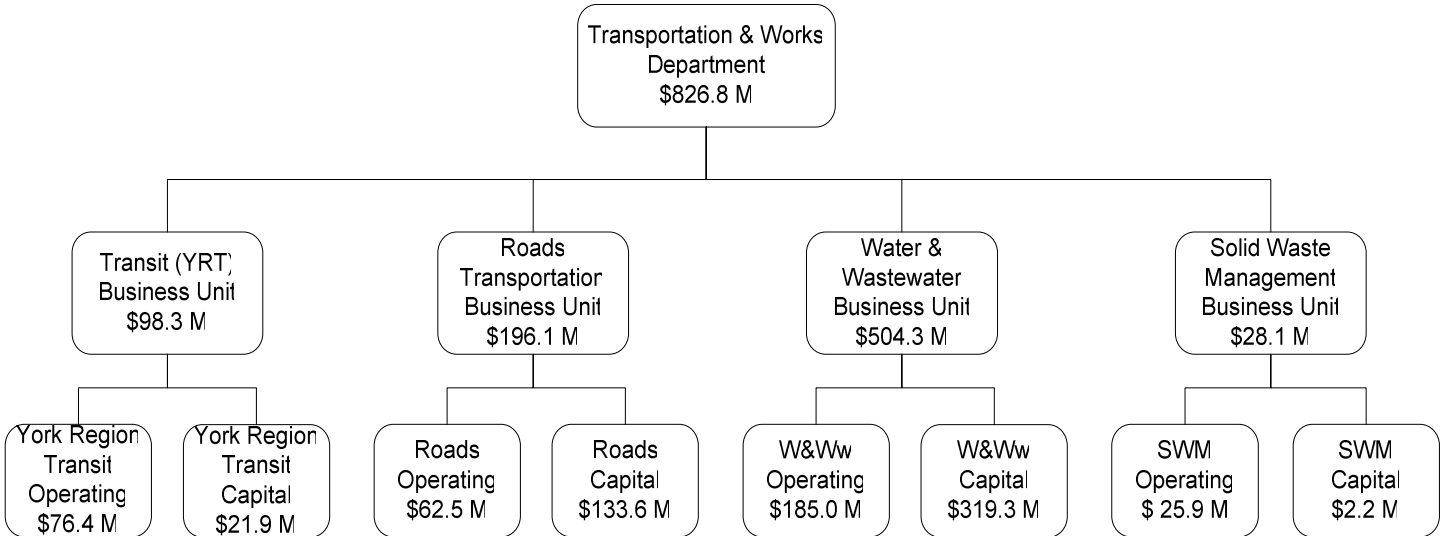
## Solid Waste

– Plan and manage the Region's solid waste strategy; operate Household Hazardous Waste programs, compost facility and waste transfer stations.



# Transportation & Works Overview

A program map for the Transportation and Works Department with the 2005 Gross Expenditures is shown below.



Specific 2005 program initiatives and 2006 / 2007 Outlook initiatives are outlined in the respective Business Plans for Transit Services, Roads Transportation (including Forestry), Water & Wastewater and Solid Waste Management. A Financial Overview is outlined below in the rest of this section.



# Transportation & Works Overview

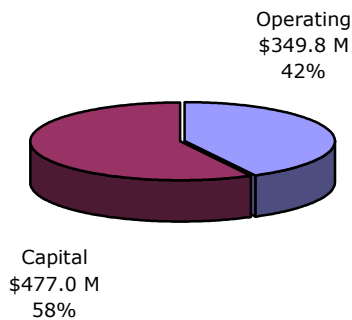
## Financial Summary

The Approved 2005 total budget for the Transportation and Works Department is \$826.8 million (Operating \$349.8 million and Capital \$477 million). The tax levy budget for the Transportation and Works Department is \$123.9 million, an increase of \$13.5 million or 12% primarily due to improved Transit Services. The overall cost and revenue details are outlined below:

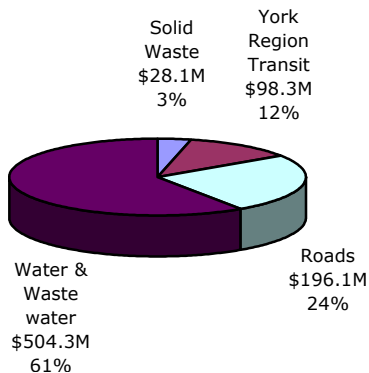
### 2005 Financial Overview

**\$826.8 Million**

### Gross Operating and Capital Expenditures



### Gross Program Expenditures



	Financial Summary \$ 000's				
	2004 Estimated	2004 Budget	2005 Budget	2006 Outlook	2007 Outlook
<b>OPERATING</b>					
<b>Gross Expenditures</b>					
York Region Transit	63,409	63,192	76,359	88,292	100,134
Roads Transportation	26,567	25,186	62,526	80,347	84,600
Water & Wastewater	126,395	137,309	184,968	204,134	215,342
Solid Waste Management	21,903	22,277	25,903	34,077	37,214
<b>Total</b>	<b>238,274</b>	<b>247,965</b>	<b>349,757</b>	<b>406,849</b>	<b>437,290</b>
<b>Revenues</b>					
York Region Transit	(27,268)	(27,288)	(29,369)	(26,277)	(28,698)
Roads Transportation	(3,398)	(3,430)	(3,657)	(9,988)	(10,253)
Water & Wastewater	(126,395)	(137,309)	(184,968)	(204,134)	(215,342)
Solid Waste Management	(6,505)	(5,837)	(7,832)	(9,463)	(9,738)
<b>Total</b>	<b>(163,565)</b>	<b>(173,865)</b>	<b>(225,826)</b>	<b>(249,862)</b>	<b>(264,030)</b>
<b>Net Expenditure</b>					
York Region Transit	36,141	35,904	46,990	62,015	71,436
Roads Transportation	23,170	21,756	58,870	70,359	74,348
Water & Wastewater	0	0	0	(0)	0
Solid Waste Management	15,399	16,440	18,071	24,613	27,476
<b>Tax Levy - Operating</b>	<b>74,710</b>	<b>74,100</b>	<b>123,930</b>	<b>156,988</b>	<b>173,260</b>
<b>CAPITAL</b>					
<b>Gross Expenditures</b>					
York Region Transit	11,176	27,194	21,953	37,063	30,555
Roads Transportation	133,227	140,653	133,576	103,214	113,188
Water & Wastewater	292,995	456,212	319,310	301,488	309,512
Solid Waste Management	24,149	39,635	2,200	5,700	5,550
<b>Total</b>	<b>461,547</b>	<b>663,694</b>	<b>477,039</b>	<b>447,465</b>	<b>458,805</b>
<b>Sources of Funding</b>					
Development Charges	(96,942)	(116,515)	(88,953)	(95,184)	(109,147)
Debentures	(193,894)	(326,415)	(237,202)	(187,780)	(198,545)
Other Revenues	(137,357)	(184,447)	(150,884)	(164,502)	(151,113)
<b>Total</b>	<b>(428,192)</b>	<b>(627,377)</b>	<b>(477,039)</b>	<b>(447,465)</b>	<b>(458,805)</b>
<b>Tax Levy - Capital</b>	<b>33,355</b>	<b>36,317</b>	<b>0</b>	<b>0</b>	<b>0</b>
<b>TOTAL TAX LEVY</b>	<b>108,065</b>	<b>110,417</b>	<b>123,930</b>	<b>156,988</b>	<b>173,260</b>

# Transportation & Works Overview

---

## ***Financial Explanations (2005/2004)***

Total tax levy increased by \$13.5 million from \$110.4 million in 2004 to \$123.9 million in 2005. The operating component represents 94% of the total tax levy and increased by \$12.7 million from \$74.1 million to \$86.8 million. The major sources of the increase are:

	<u>\$ Millions</u>
<b>2004 BUDGET - Total Tax Levy</b>	<b>110.4</b>
<b>OPERATING COSTS</b>	
<b>York Region Transit</b> - Base (Inflation & Annualization)	3.7
- Growth	2.8
- Enhancements	0.4
<b>Roads</b>	
- Base	3.2
- Growth	0.7
- Enhancements	0.3
<b>Solid Waste</b>	
- Base	0.1
- Growth	0.4
- Enhancements	1.1
<b>Direct Operating Tax Levy</b>	<b>12.7</b>
<b>CONTRIBUTION TO CAPITAL COSTS</b>	
<b>York Region Transit</b> - Rehabilitation / Replacement	0.8
<b>Subtotal Contribution to Capital Tax Levy Changes</b>	<b>0.8</b>
<b>TOTAL TAX LEVY CHANGES</b>	<b>13.5</b>
<b>2005 BUDGET - Total Tax Levy</b>	<b><u>123.9</u></b>

# Transportation & Works Overview

---

In general, increases in Base costs are driven by annualization of 2004 service growth, debt repayment, inflation and cost increases for hydro, fuel and some operating contracts above inflation. Growth related cost increases are supported by the underlying service requirements.

Enhancement related cost increases, primarily in Transit Services, are to improve customer service levels. Additional Enhancements in Solid Waste Management are related to the new Bales Drive Material Recovery Facility and the expansion of the Source Separated Organics program.



Further details on cost increases related to Base Service, Growth, and Enhancements are documented in the individual Business Plans for Transit Services, Roads Transportation Services, Water & Wastewater Services, and Solid Waste Management Services.

# Transportation & Works Overview

---

## 2005– 2014 Capital Program

The 2005 Capital Budget for Transportation and Works is \$477.0 million, with the 10 Year 2005 to 2014 Capital Program totalling \$2,913.0 million. The changes in Gross Expenditures in the 10 Year Capital Program between the Approved 2004 and the Approved 2005 Capital Programs are outlined below for each Business Unit.

	Approved 2004 (\$M)	Approved 2005 (\$M)
<b>York Region Transit Capital Program</b>		
• 2005 Budget Year	27.2	21.9
• 10 Year Capital Program	218.6	236.1
<b>Roads Capital Program</b>		
• 2005 Budget Year	140.7	133.6
• 10 Year Capital Program	1,109.8	1,132.8
<b>Water &amp; Wastewater Capital Program</b>		
• 2005 Budget Year	456.2	319.3
• 10 Year Capital Program	1,640.1	1,520.9
<b>Solid Waste Capital Program</b>		
• 2005 Budget Year	39.6	2.2
• 10 Year Capital Program	43.8	23.2
<b>Total T&amp;W Capital Program</b>		
• 2005 Budget Year	663.7	477.0
• 10 Year Capital Program	3,012.3	2,913.0

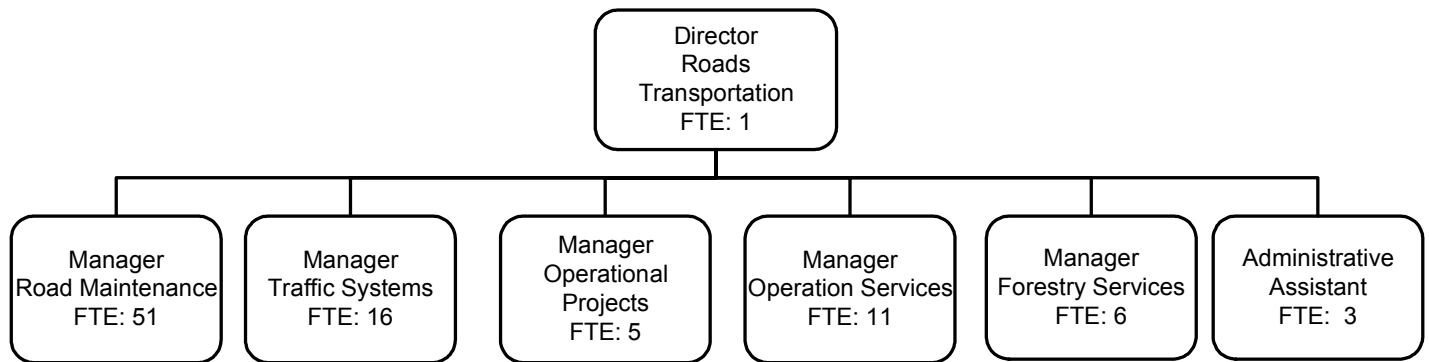
---



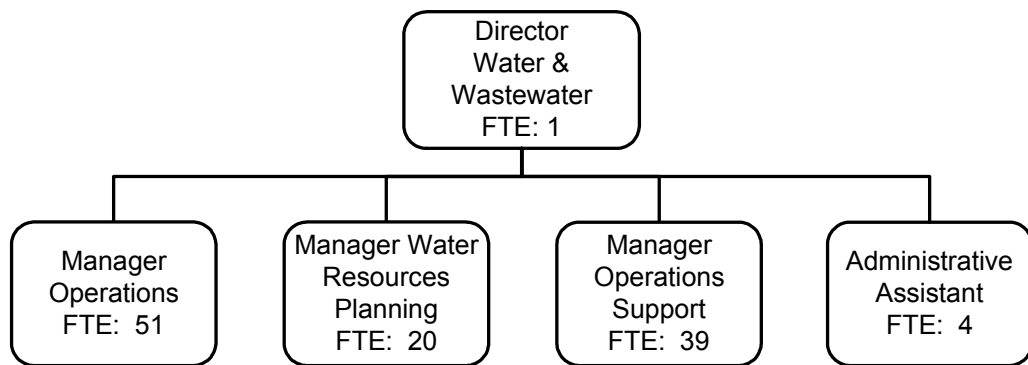


# Transportation & Works Overview

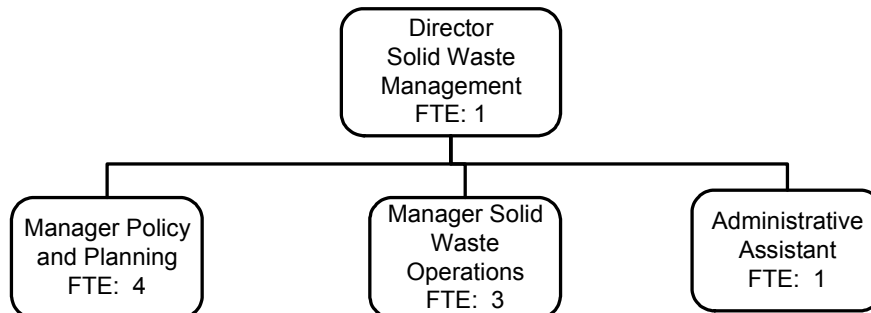
---



*Roads Transportation Branch Total: 93 Permanent Full Time Staff*



*Water & Wastewater Branch Total: 115 Permanent Full Time Staff*

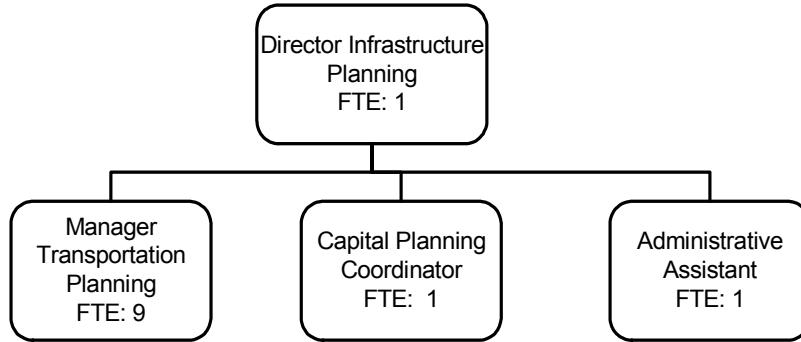


*Solid Waste Management Branch Total: 9 Permanent Full Time Staff*

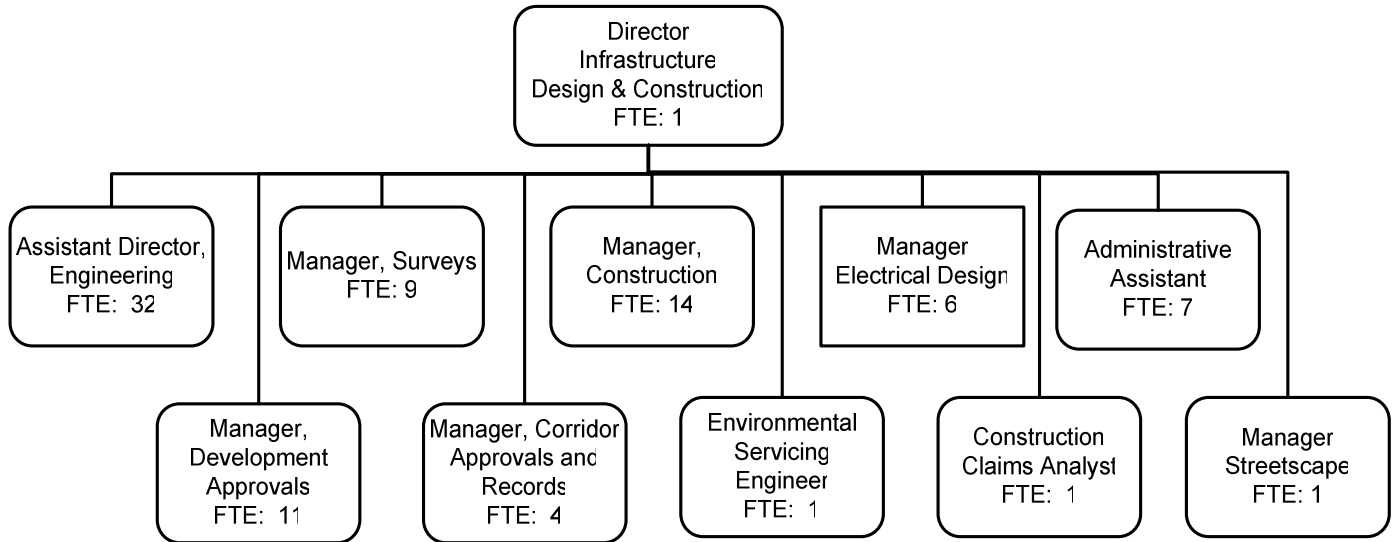
# Transportation & Works Overview

---

## Support Branches



*Infrastructure Planning Branch Total: 12 Permanent Full Time Staff*



*Infrastructure Design & Construction Branch Total: 87 Permanent Full Time Staff*

