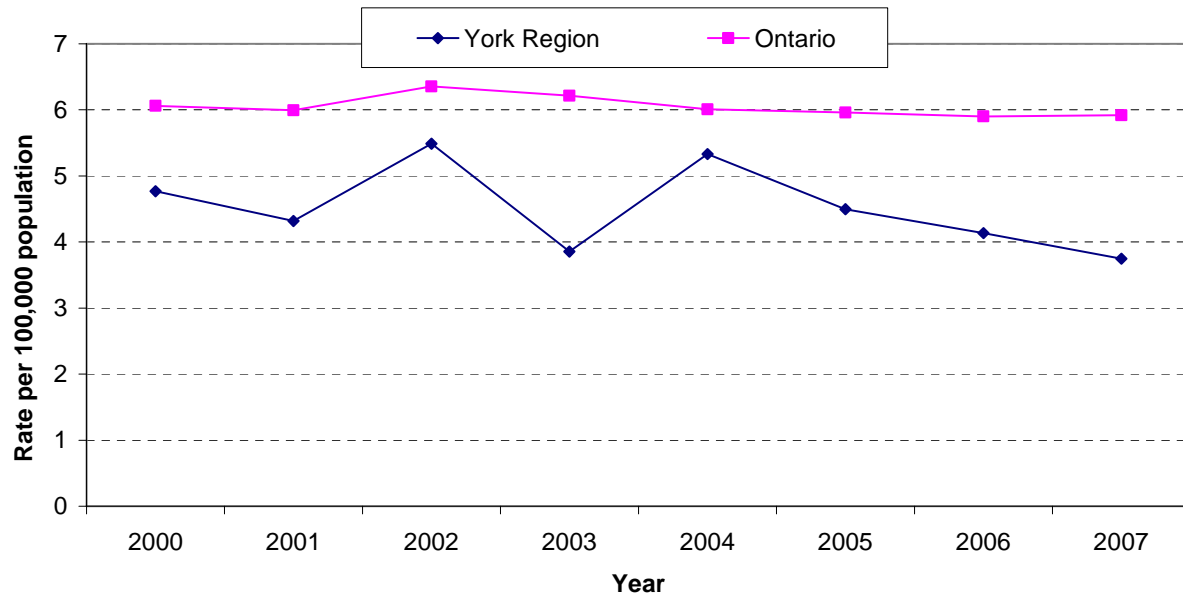


## Motor Vehicle Traffic Crash-Related Deaths

This summary focuses on the rate and total number of deaths per 100,000 due to motor vehicle traffic crashes (MVTC) in York Region and Ontario.

Ontario Public Health Standards, Chronic Diseases and Injuries Program Standard, Prevention of Injury and Substance Misuse – Req 1.

### Age-Standardized Mortality Rate<sup>†</sup> for Motor Vehicle Traffic Crashes, York Region and Ontario, 2000-2007



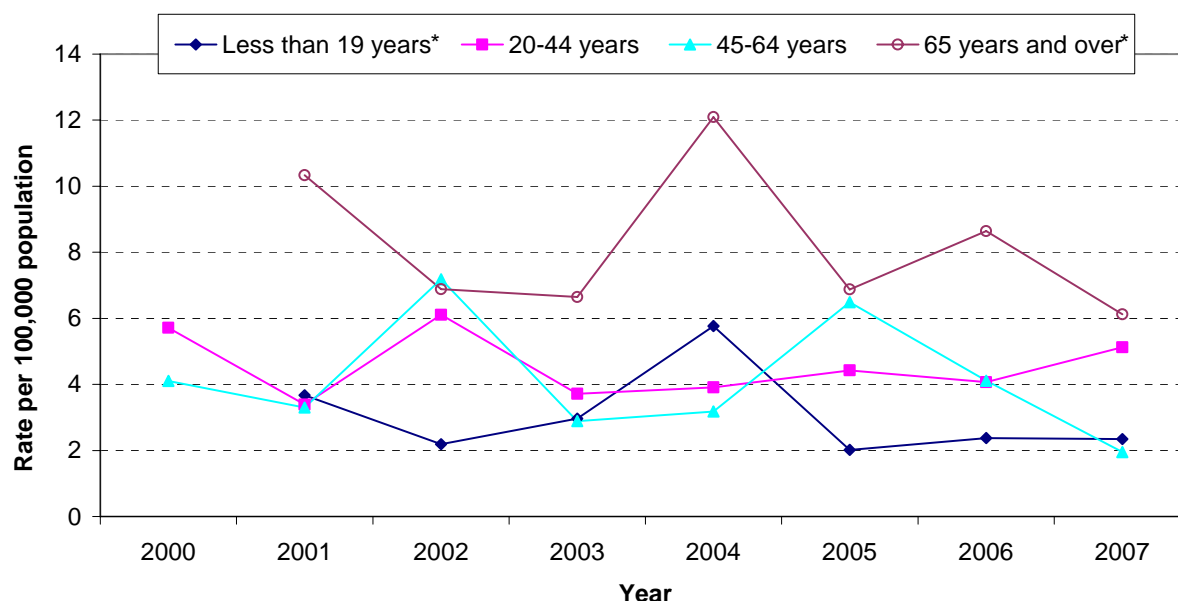
<sup>†</sup> Rate age standardized to the 1991 Canadian population standard

Data Sources: Deaths, Ontario Ministry of Health and Long-Term Care, IntelliHEALTH ONTARIO [Aug/2011]. Rates were calculated using population estimates from Statistics Canada. Table 051-0052 - Estimates of population by census division, sex and age group for July 1, based on the Standard Geographical Classification (SGC) 2006, annual (persons) (table), CANSIM (database).

### Interpretation:

- In 2007, the age-standardized mortality rate for MVTC was 3.7 per 100,000 York Region residents compared to a peak of 5.5 per 100,000 in 2002. Between 2000 and 2007, the rate of MVTC-related mortality has remained stable in York Region.
- York Region rates of MVTC-related mortality were lower than Ontario rates in three of the eight years of data collection.
- The total number of MVTC-related deaths in York Region ranged from 30 deaths in 2003 to 44 deaths in 2004 (data not shown).
- York Region men experienced a higher MVTC-related mortality rate than women in three years of data collection (data not shown). There was no difference between men and women in the other years, and data were suppressed for females in one year due to small numbers.

## Mortality Rate for Motor Vehicle Traffic Crashes in York Region by Age Group, 2000-2007



\* Rates for some years in this age group were suppressed due to small numbers

Data Sources: Deaths, Ontario Ministry of Health and Long-Term Care, IntelliHEALTH ONTARIO [Aug/2011]. Rates were calculated using population estimates from Statistics Canada. Table 051-0052 - Estimates of population by census division, sex and age group for July 1, based on the Standard Geographical Classification (SGC) 2006, annual (persons) (table), CANSIM (database).

### Interpretation:

- In 2007, the age-specific MVTC-related mortality rates for York Region were:
  - 2.3 per 100,000 among residents 19 years and under;
  - 5.1 per 100,000 among 20 to 44 year olds;
  - 2.0 per 100,000 among 45 to 64 year olds; and
  - 6.1 per 100,000 among residents aged 65 to 74 year olds.
- Between 2000 and 2007, rates of MVTC-related mortality remained stable in all age groups.

### Data Notes:

The age standardized mortality rate presented is the total number of deaths per 100,000 residents that would occur if York Region had the same age distribution of a chosen standard population. This statistical adjustment minimizes the effects of age differences when comparing rates in different populations or over time.

Mortality data are derived from death certificates completed by physicians which are collected by the Office of the Registrar General (ORG). The cause of death reported is that which initiates the sequence of events leading to death. From 2000 onward causes of death were coded using the Tenth Revision of the International Classification of Diseases (ICD-10).

Data are analyzed based on the residence of the patient, not where the death occurred.

Records were excluded from this analysis if Ontario residents died outside of the province. Clients with unknown gender were excluded from the sex-specific analysis, and clients with unknown ages were excluded from the age specific analysis.

Statistical significance was examined using Computer Programs for Epidemiologists: WINPEPI (PEPI-for-Windows). Version 1.31. Salt Lake City, Utah: Sagebrush Press; 2004.