

# 2001 York Region Population speaking a Non-Official Language most often at home by Census Tract

## LEGEND

### Percentage of Population

- 0 - 5%
- 5.1 - 10%
- 10.1 - 20%
- 20.1 - 30%
- 30.1 - 40%

Not Available

Census Tract

Municipal Boundary

Regional Boundary

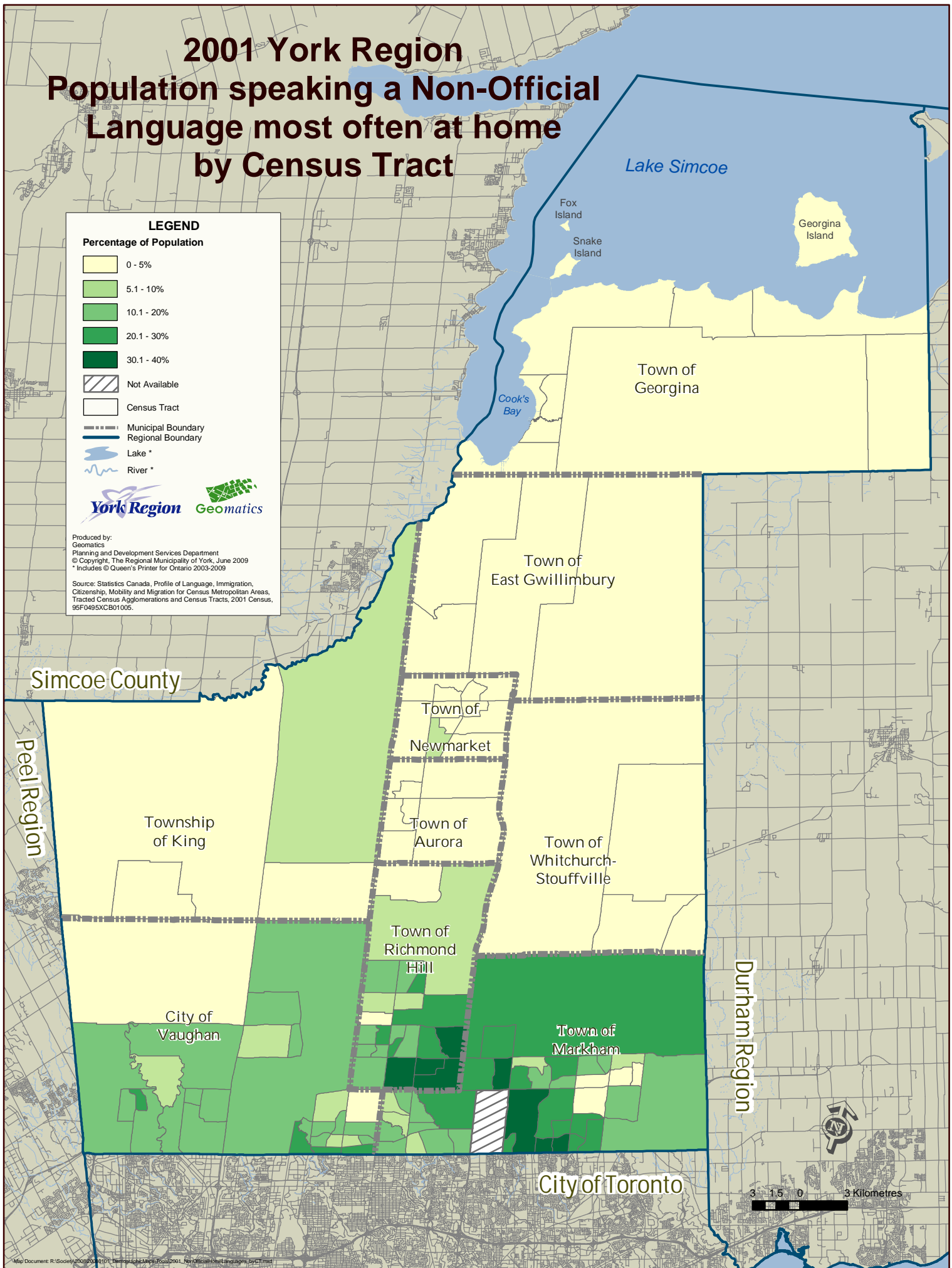
Lake \*

River \*



Produced by:  
Geomatics  
Planning and Development Services Department  
© Copyright, The Regional Municipality of York, June 2009  
\* Includes © Queen's Printer for Ontario 2003-2009

Source: Statistics Canada, Profile of Language, Immigration, Citizenship, Mobility and Migration for Census Metropolitan Areas, Tracted Census Agglomerations and Census Tracts, 2001 Census, 95F0495XC801005.



3 1.5 0 3 Kilometres