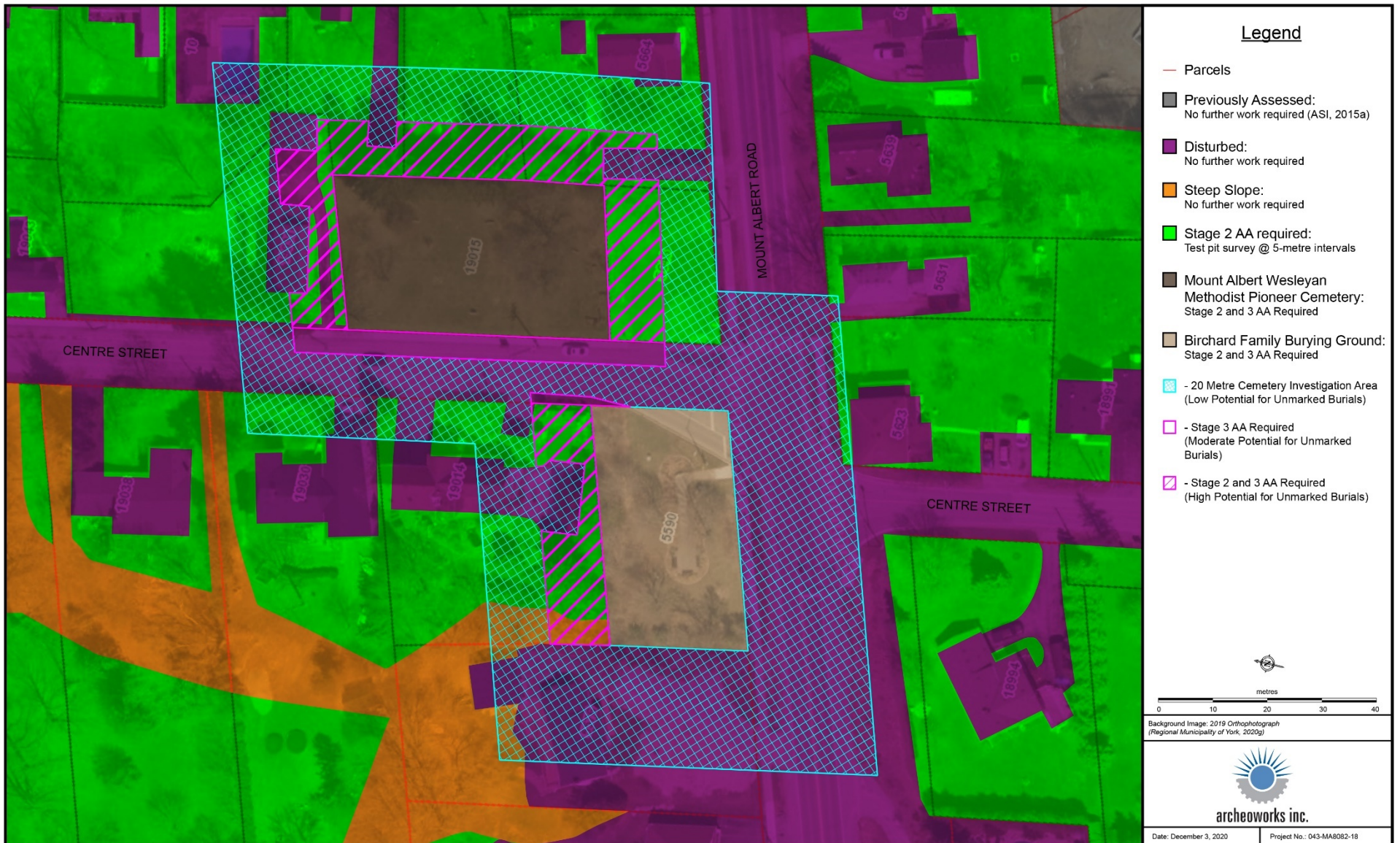


STAGE 1 AA FOR THE MOUNT ALBERT WATER SUPPLY SYSTEM UPGRADES MUNICIPAL CLASS EA
TOWN OF EAST GWILLIMBURY, R.M. OF YORK, ONTARIO



Map 17: Stage 1 AA results – Impact Buffer.

STAGE 1 AA FOR THE MOUNT ALBERT WATER SUPPLY SYSTEM UPGRADES MUNICIPAL CLASS EA
TOWN OF EAST GWILLIMBURY, R.M. OF YORK, ONTARIO



Map 18: Stage 1 AA results – Mount Albert Wesleyan Methodist Pioneer Cemetery and Birchard Family Burying Ground.

APPENDIX B: SUMMARY OF BACKGROUND RESEARCH

Feature of Archaeological Potential	Yes	No	Unknown	Comment
1. Known archaeological sites within 300 m?	X			If Yes, potential confirmed
Physical Features	Yes	No	Unknown	Comment
2. Is there water on or adjacent to the property?	X			If Yes, potential confirmed
2a. Presence of primary water source within 300 metres of the study area (lakes, rivers, streams, creeks)	X			If Yes, potential confirmed
2b. Presence of secondary water source within 300 metres of the study area (intermittent creeks and streams, springs, marshes, swamps)	X			If Yes, potential confirmed
2c. Features indicating past presence of water source within 300 metres (former shorelines, relic water channels, beach ridges)		X		If Yes, potential confirmed
2d. Accessible or inaccessible shoreline (high bluffs, swamp or marsh fields by the edge of a lake, sandbars stretching into marsh)		X		If Yes, potential confirmed
3. Elevated topography (knolls, drumlins, eskers, plateaus, etc.)		X		If Yes to two or more of 3-5 or 7-10, potential confirmed
4. Pockets of well-drained sandy soil, especially near areas of heavy soil or rocky ground		X		If Yes to two or more of 3-5 or 7-10, potential confirmed
5. Distinctive land formations (mounds, caverns, waterfalls, peninsulas, etc.)		X		If Yes to two or more of 3-5 or 7-10, potential confirmed
Cultural Features	Yes	No	Unknown	Comment
6. Is there a known burial site or cemetery that is registered with the Cemeteries Regulation Unit on or directly adjacent to the property?	X			If Yes, potential confirmed
7. Associated with food or scarce resource harvest areas (traditional fishing locations, food extraction areas, raw material outcrops, etc.)		X		If Yes to two or more of 3-5 or 7-10, potential confirmed
8. Indications of early Euro-Canadian settlement (monuments, cemeteries, structures, etc.) within 300 metres	X			If Yes to two or more of 3-5 or 7-10, potential confirmed
9. Associated with historic transportation route (historic road, trail, portage, rail corridor, etc.) within 100 metres of the property	X			If Yes to two or more of 3-5 or 7-10, potential confirmed
Property-specific Information	Yes	No	Unknown	Comment
10. Contains property designated under the Ontario Heritage Act	X			If Yes, potential confirmed
11. Local knowledge (aboriginal communities, heritage organizations, municipal heritage committees, etc.)		X		If Yes, potential confirmed
12. Recent ground disturbance, not including agricultural cultivation (post-1960, extensive and deep land alterations)	X - parts			If Yes, low archaeological potential is determined

APPENDIX C: IMAGES



Image 1: View of disturbances associated with the asphalt roadway, concrete shoulder, curbs and sidewalk, and cut slope with concrete barrier.



Image 2: View of disturbances associated with the asphalt roadway, concrete shoulder and curbs, intersecting driveways and residential structures.



Image 3: View of disturbances associated with a cut slope, concrete sidewalk and barrier adjacent to the Mount Albert Wesleyan Methodist Pioneer Cemetery property limits.



Image 4: View of disturbances associated with a cut slope, concrete sidewalk and barrier, and existing structures adjacent to the Mount Albert Wesleyan Methodist Pioneer Cemetery property limits.

**STAGE 1 AA FOR THE MOUNT ALBERT WATER SUPPLY SYSTEM UPGRADES MUNICIPAL CLASS EA
TOWN OF EAST GWILLIMBURY, R.M. OF YORK, ONTARIO**



Image 5: View of disturbances associated with a cut slope, concrete barrier, sidewalk, driveway and utilities adjacent to the Mount Albert Wesleyan Methodist Pioneer Cemetery limits.



Image 6: View of disturbances associated with deep drainage ditching, an asphalt driveway and regional infrastructure (Mount Albert wells 1 and 2 and elevated tank).



Image 7: View of area subjected to previous grading and construction activities associated with the installation of various buried utilities.



Image 8: View of disturbances associated with an asphalt roadway, intersecting driveways, deep drainage ditching, culverts, and residential structures.



Image 9: View of disturbances associated with the asphalt roadways, gravel shoulders, deep drainage ditching, culverts and a residential structure.



Image 10: View of disturbances associated with asphalt roadways, intersecting driveways and residential structures. Manicured lawns retain archaeological potential.



Image 11: View of disturbances associated with an asphalt roadway, intersecting driveways, various buried utilities and deep drainage ditching. Lands beyond the disturbed road ROW retain archaeological potential.



Image 12: View of disturbances associated with the asphalt roadway and roadside ditching. Manicured lawn and agricultural field on the left retain archaeological potential.

**STAGE 1 AA FOR THE MOUNT ALBERT WATER SUPPLY SYSTEM UPGRADES MUNICIPAL CLASS EA
TOWN OF EAST GWILLIMBURY, R.M. OF YORK, ONTARIO**



Image 13: View of disturbances associated with the asphalt roadway, intersecting gravel driveways and extant structures. Lands beyond the disturbed road ROW retain archaeological potential.



Image 14: View of disturbances associated with the asphalt roadway. Note the cut and embankment of the road bed within the surrounding slightly sloping terrain. Lands beyond the disturbed road ROW retain archaeological potential.



Image 15: View of disturbances associated with the asphalt roadway, intersecting driveways, existing structures, roadside ditching and culverts. Lands beyond the disturbed road ROW retain archaeological potential.



Image 16: View of disturbances associated with a residential structure. Manicured lawn retains archaeological potential.

STAGE 1 AA FOR THE MOUNT ALBERT WATER SUPPLY SYSTEM UPGRADES MUNICIPAL CLASS EA
TOWN OF EAST GWILLIMBURY, R.M. OF YORK, ONTARIO



Image 17: View of disturbances associated with the asphalt roadway, intersecting driveways, roadside ditching and residential structures. Manicured lawns retain archaeological potential.



Image 18: View of disturbances associated with the asphalt roadway. Note the cut and embankment of the road bed within the surrounding slightly sloping terrain. Lands beyond the disturbed road ROW retain archaeological potential.



Image 19: View of disturbances associated with regional infrastructure (well 3).



Image 20: View of area subjected to previous grading and construction activities associated with the installation of the well site.

STAGE 1 AA FOR THE MOUNT ALBERT WATER SUPPLY SYSTEM UPGRADES MUNICIPAL CLASS EA
TOWN OF EAST GWILLIMBURY, R.M. OF YORK, ONTARIO



Image 21: View of area subjected to previous grading and construction activities associated with the installation of the well site.



Image 22: View of area subjected to previous grading and construction activities associated with the installation of the well site.



Image 23: View of area subjected to previous grading and construction activities associated with the installation of the well site.



Image 24: View of area subjected to previous grading and construction activities associated with the installation of the well site.

STAGE 1 AA FOR THE MOUNT ALBERT WATER SUPPLY SYSTEM UPGRADES MUNICIPAL CLASS EA
TOWN OF EAST GWILLIMBURY, R.M. OF YORK, ONTARIO



Image 25: View of disturbances associated with previous roadway improvements – asphalt roadway, concrete curbs and sidewalks, buried utilities.



Image 26: View of disturbances associated with a cut slope, barrier wall, and concrete sidewalk adjacent to the Birchard Family Burying Ground.



Image 27: View of steeply sloping terrain.



Image 28: View of steeply sloping terrain.



Image 29: View of steeply sloping terrain between two residential properties.



Image 30: View of steeply sloping terrain beyond overgrown vegetation (looking at the base of tree trunks on lower terrain compared to the terrain on which the field reviewer stands).



Image 31: View of steeply sloping terrain.



Image 32: View of steeply sloping terrain.

STAGE 1 AA FOR THE MOUNT ALBERT WATER SUPPLY SYSTEM UPGRADES MUNICIPAL CLASS EA
TOWN OF EAST GWILLIMBURY, R.M. OF YORK, ONTARIO



Image 33: View of steeply sloping terrain behind the existing house and driveway.



Image 34: View of area of archaeological potential within the manicured front lawn of a residential property.



Image 35: View of area of archaeological potential beyond the disturbed ROW. Steeply sloping terrain visible in the background.



Image 36: View of area of archaeological potential beyond the disturbed ROW. Steeply sloping terrain visible in the background.

APPENDIX D: INVENTORY OF DOCUMENTARY AND MATERIAL RECORD

Project Information:		
Project Number: 043-MA8082-18		
Licensee: Kassandra Aldridge (P439)		
MHSTCI PIF: P439-0089-2020		

Document/ Material	Details	Location
1. Research/ Analysis/ Reporting Material	Digital files stored in: /2018/043-MA8082-18 - Mt Albert Water Supply Class EA/Stage 1/	Archeoworks Inc., 16715-12 Yonge Street, Suite 1029, Newmarket, ON, Canada, L3X 1X4 Also stored on Archeoworks network servers
2. Written Field Notes/Annotated Field Maps/Images	Field Maps/Field Notes: six (6) pages Digital Images: 39 digital photos	Archeoworks Inc., 16715-12 Yonge Street, Suite 1029, Newmarket, ON, Canada, L3X 1X4 Also stored on Archeoworks network servers

Under Section 14 of the Terms and Conditions for Archaeological Licences issued under the Ontario Heritage Act, "the licensee shall hold in safekeeping all artifacts and records of archaeological fieldwork carried out under this licence, except where those artifacts and records are transferred by the licensee to Her Majesty the Queen in right of Ontario or the licensee is directed to deposit them in a public institution in accordance with subsection 66(1) of the Act." The collections are being stored at *Archeoworks Inc.* on the licensee's behalf.

Appendix F. Conceptual Site Layouts of Alternative Solutions

Figure F-1: Alternative A5a Conceptual Site Layout

Figure F-2: Alternative A5b Conceptual Site Layout

Figure F-3: Alternative A6 Conceptual Site Layout

Figure F-4: Alternative A7a Conceptual Site Layout

Figure F-5: Alternative A7b Conceptual Site Layout

Figure F-6: Alternative A7c Conceptual Site Layout