

Citrix Desktop for Home Computers – Windows 7/Vista Instructions

You can use Citrix to create and access a virtual work desktop from your home computer.

Step 1 – Uninstall: To install the newest version of Citrix on your home computer, you must first [uninstall any previous versions you may have](#). If you are sure you don't have Citrix already installed on your computer, proceed to Step 2.

Step 2 – Install: [Install the Citrix Receiver on your home computer](#).

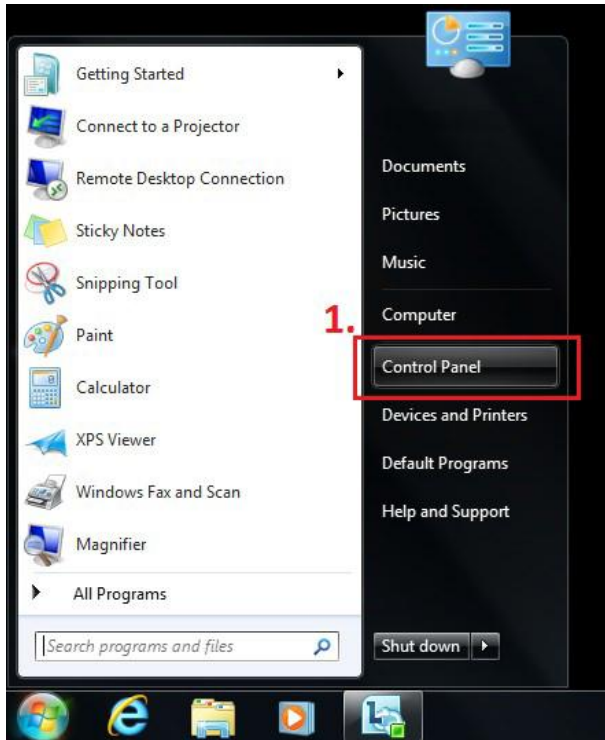
Step 3 – Access: [Access your Citrix Desktop using your web browser](#). (Special instructions for [accessing Citrix using Google Chrome](#))

If you experience issues accessing Citrix from other web browsers, please call the ITS Service Desk at x71111. The ITS Service Desk is available during evenings and weekends.

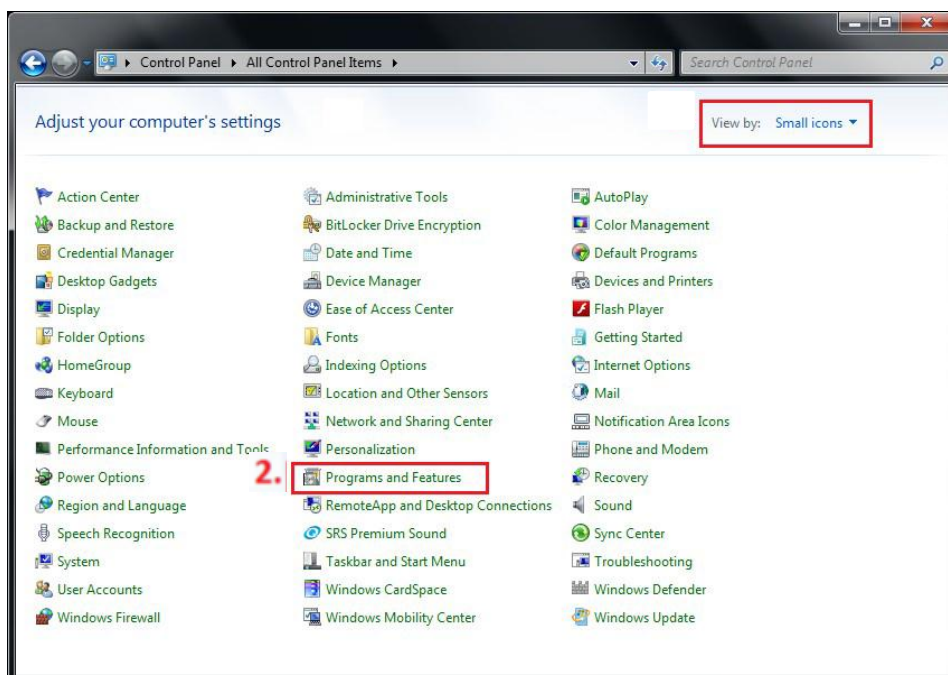
Step 1 – Uninstall previous versions of Citrix

To begin, you need to **uninstall** any previous versions of Citrix.

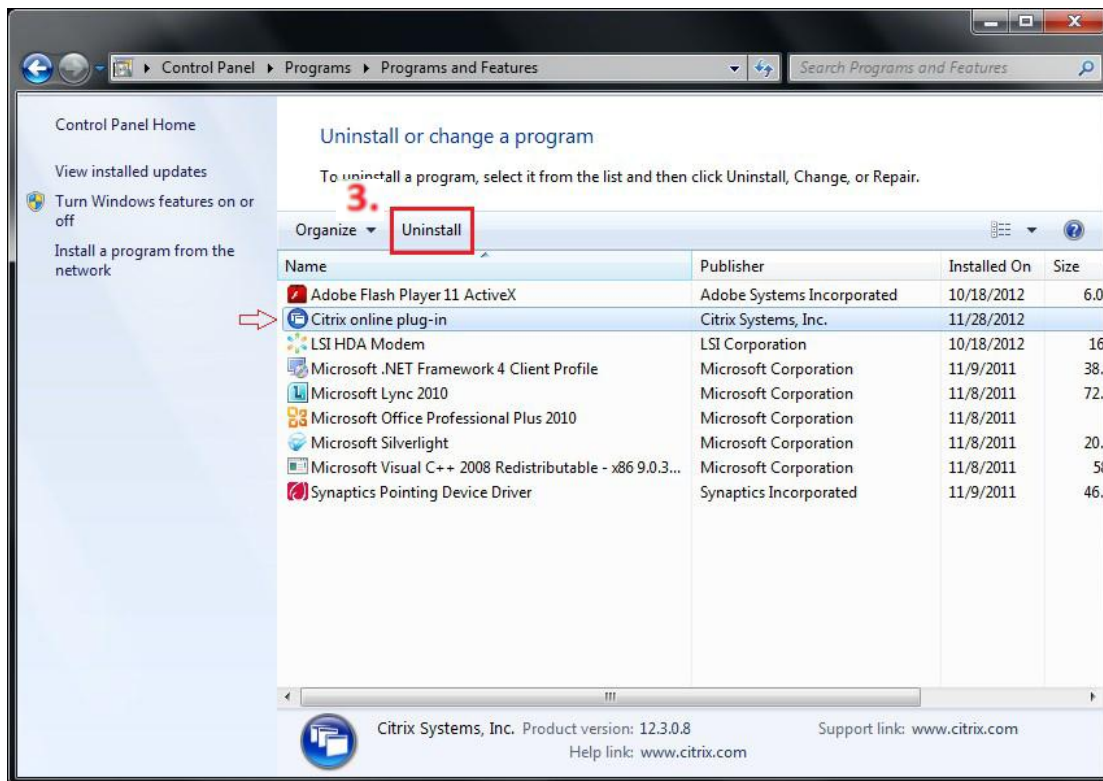
1. Go to the start menu and click on **Control Panel**.



2. Select **Programs and Features**.



3. Select any programs in the list with “Citrix” in the name and click **Uninstall**.

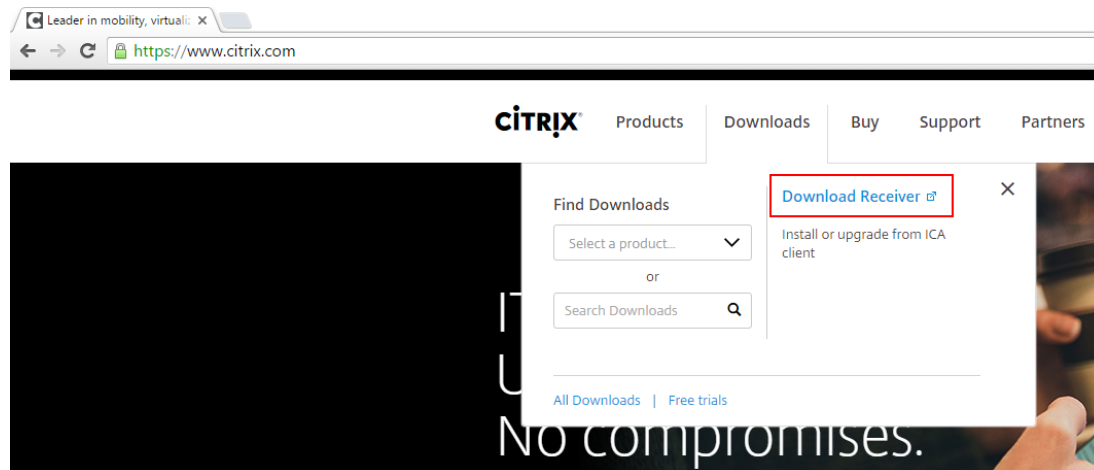


NOTE: If you don't see any programs in the list with Citrix in the title, then you don't have it installed and can proceed to the [Step 2 - Install the Citrix Receiver](#) section.

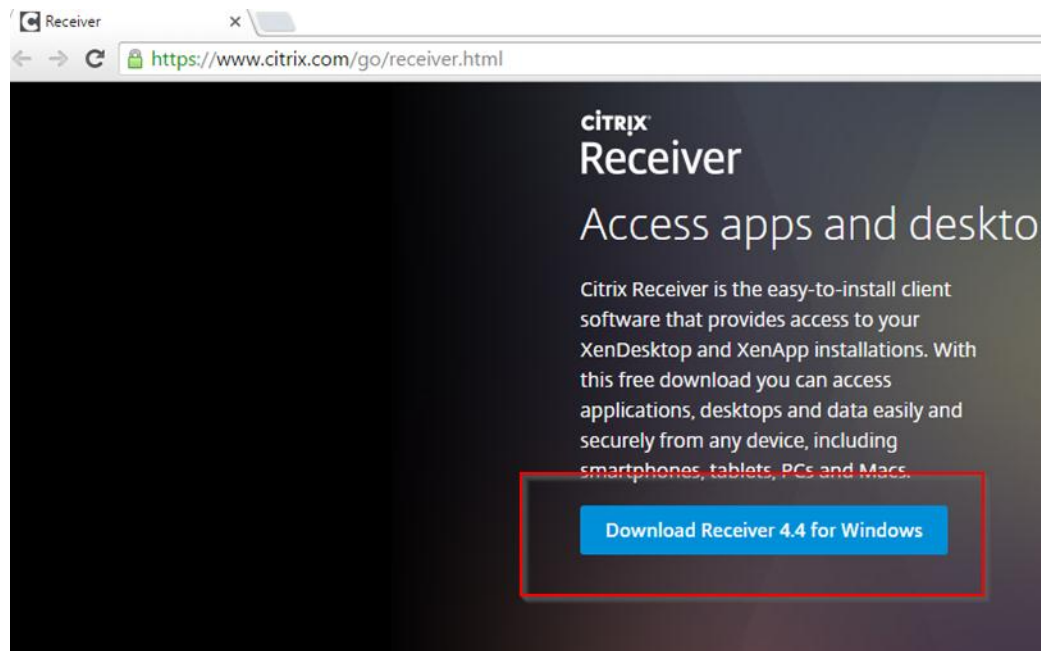
Step 2 – Install the Citrix Receiver

NOTE: You must be an administrator on your home computer to install the Citrix Receiver.

1. To Install new Citrix Receiver go to www.citrix.com and click **Download Receiver**

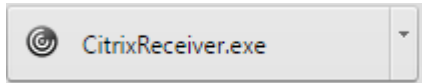


2. It will automatically detect the correct version for your computer. Click on the download link

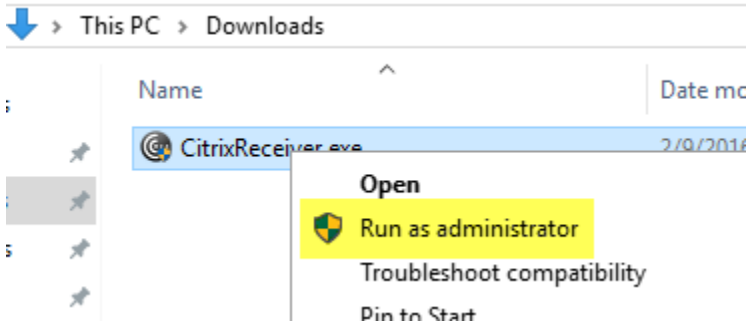


3. You can select **Run** or you can select **Save File**.

- If you select **Save File** then the **CitrixReceiver.exe** file will be downloaded.



- Right click on the downloaded file and click **Run as administrator**

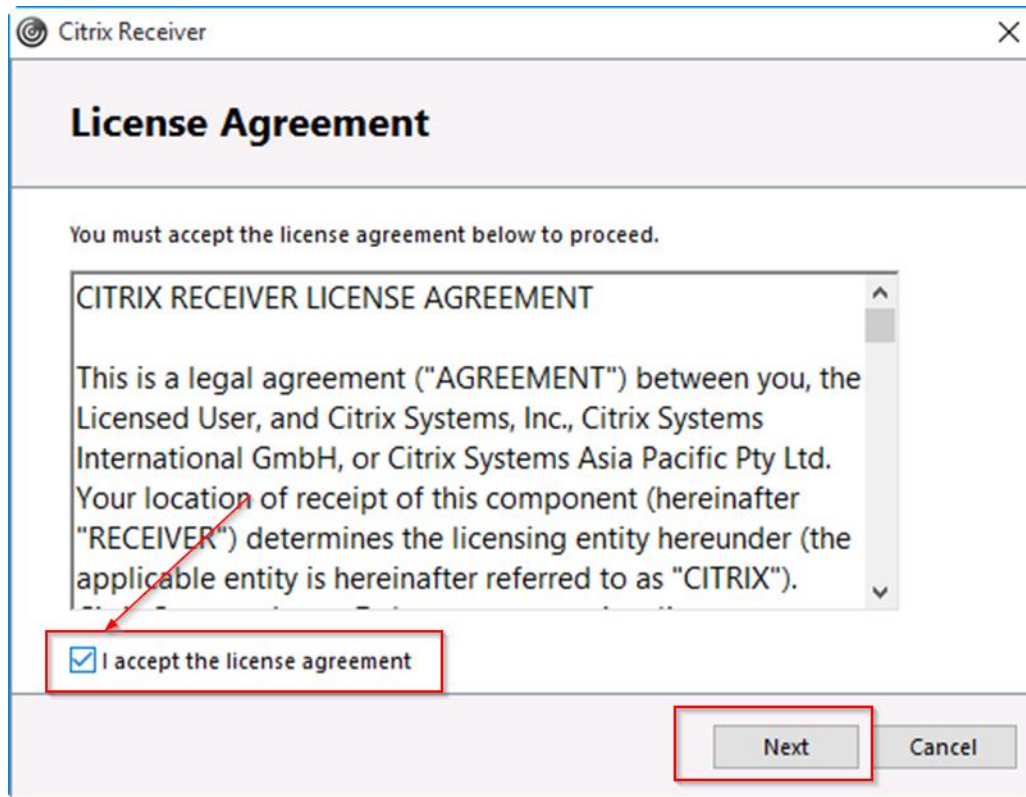


4. Follow the prompts in the installation wizard to complete the install.

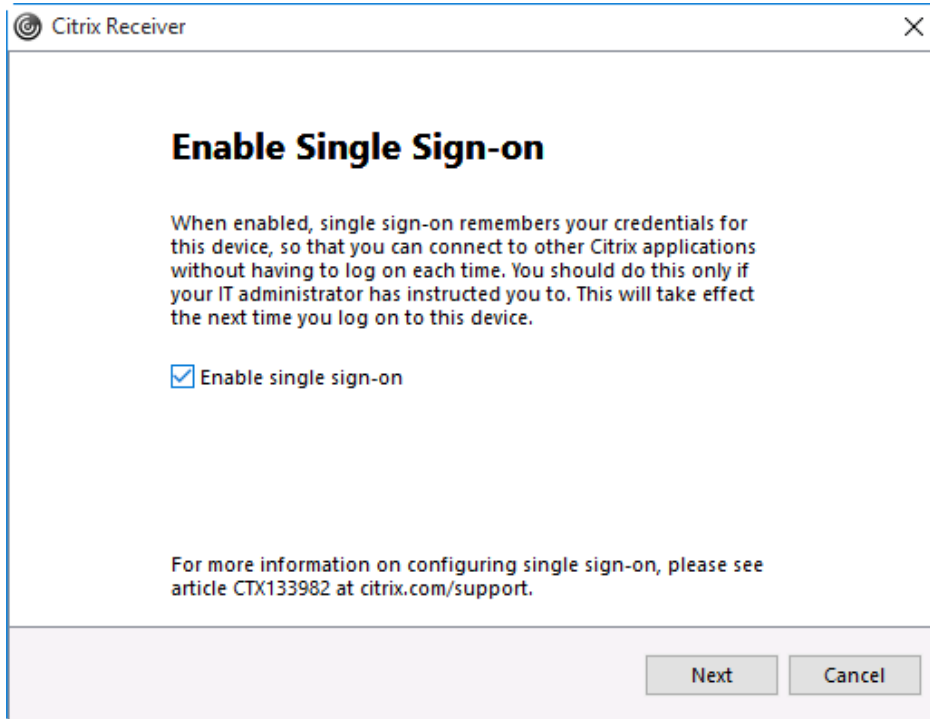
- Select **Start**



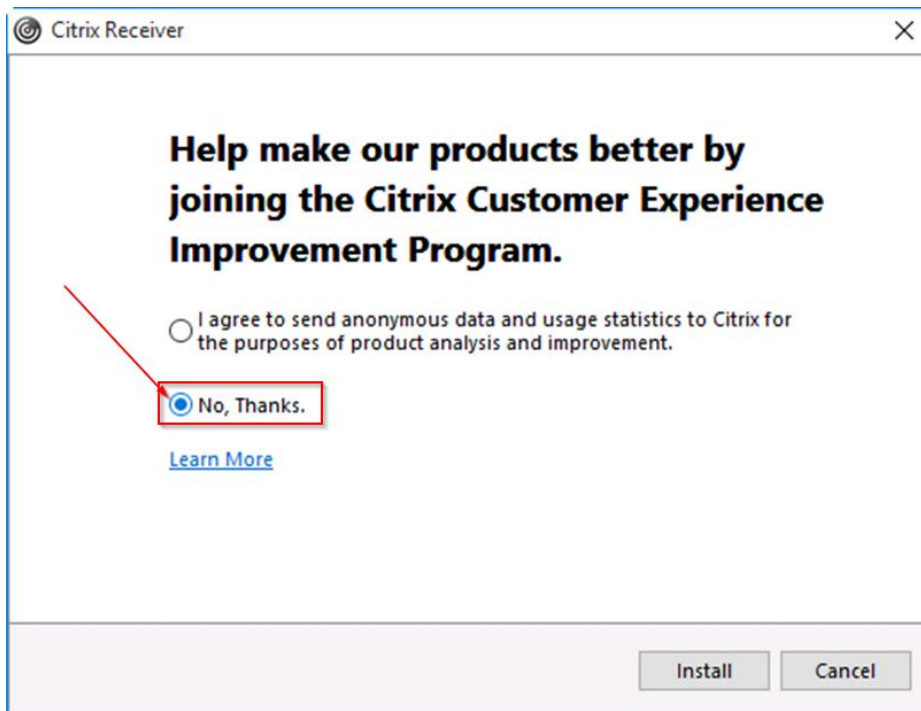
- Read and select **I accept the license agreement**.
- Click **Next**

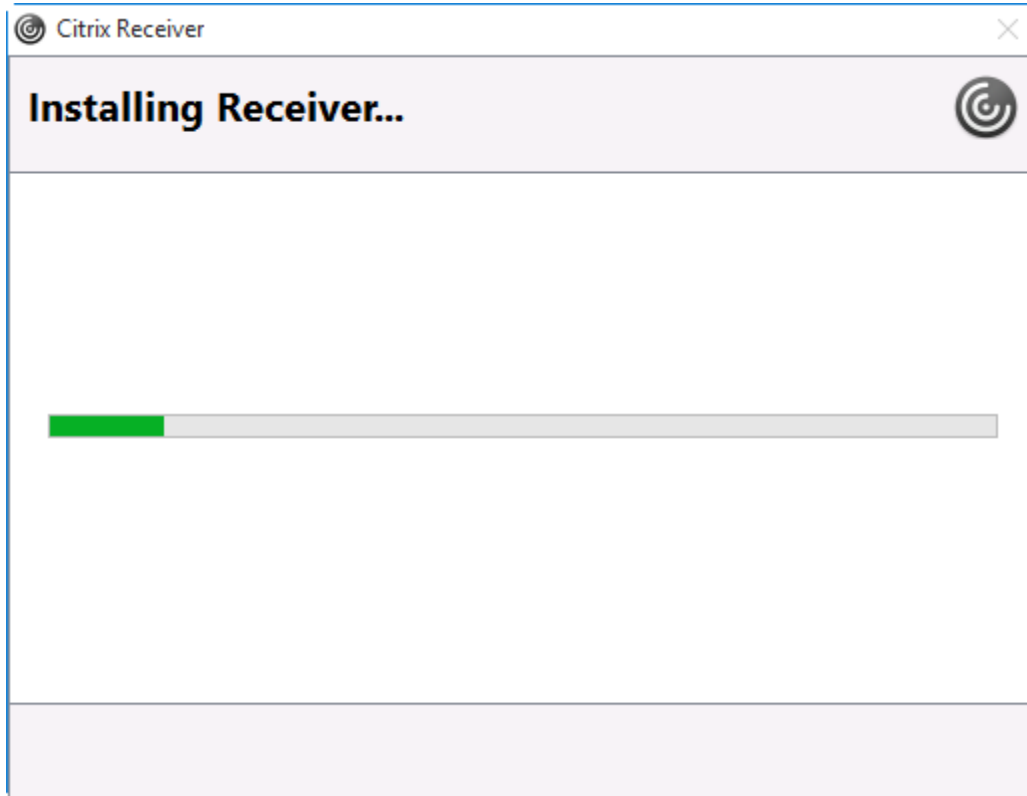


5. Only select **Enable Single Sign-On** if you are the only user of your home computer.

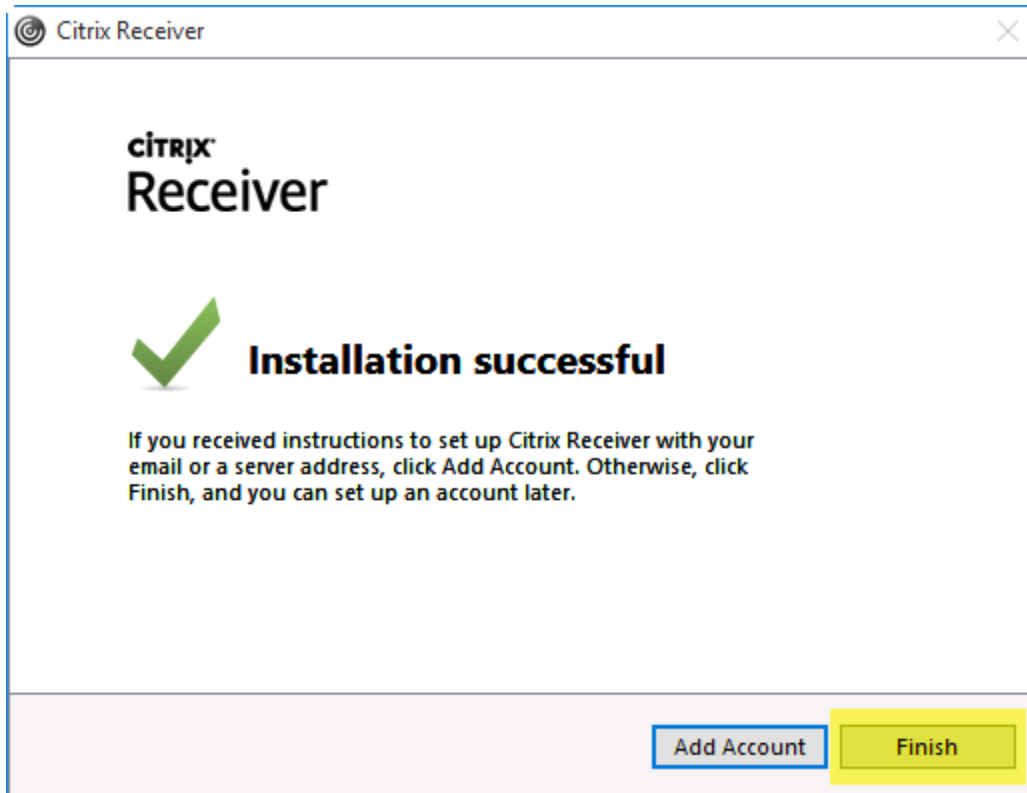


6. Select **No Thanks** for joining the Citrix Customer Experience and click **Install**.



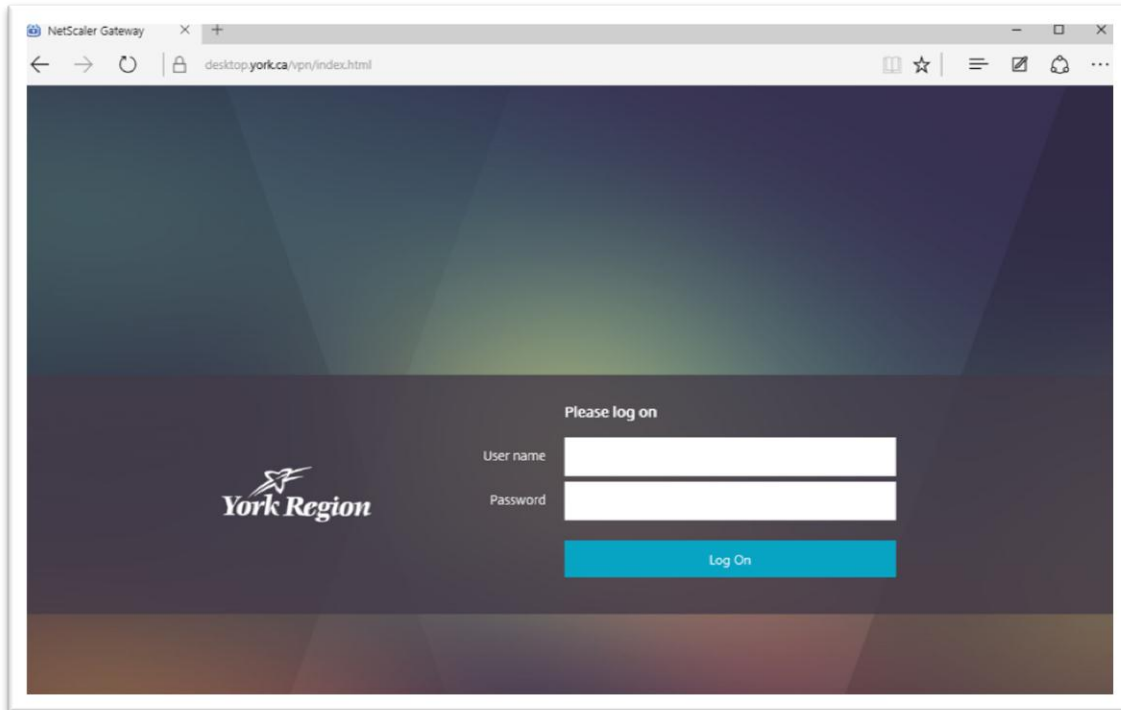


7. Do not click Add Account, just click **Finish**

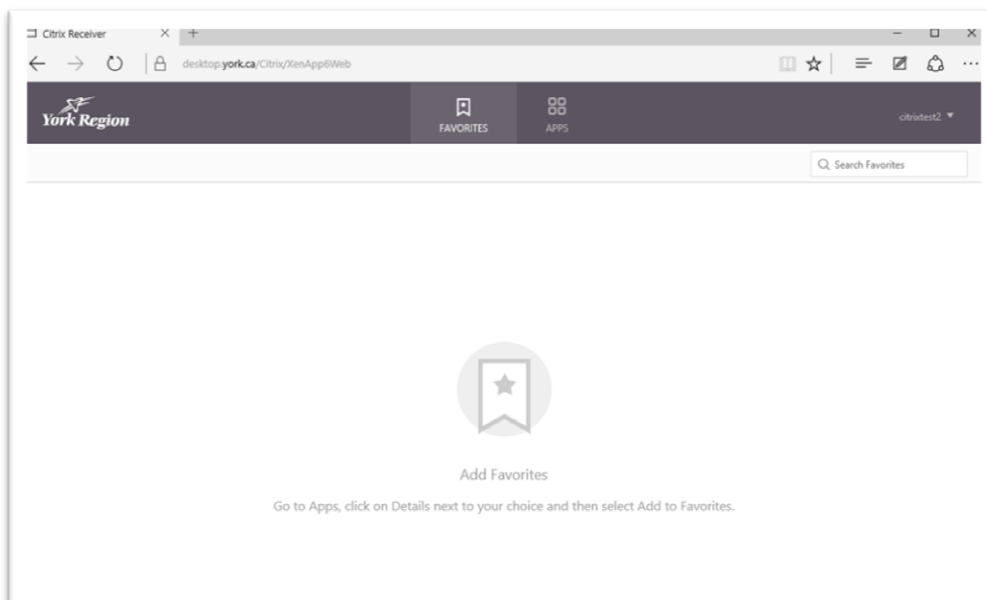


Step 3 – Access your Citrix Desktop

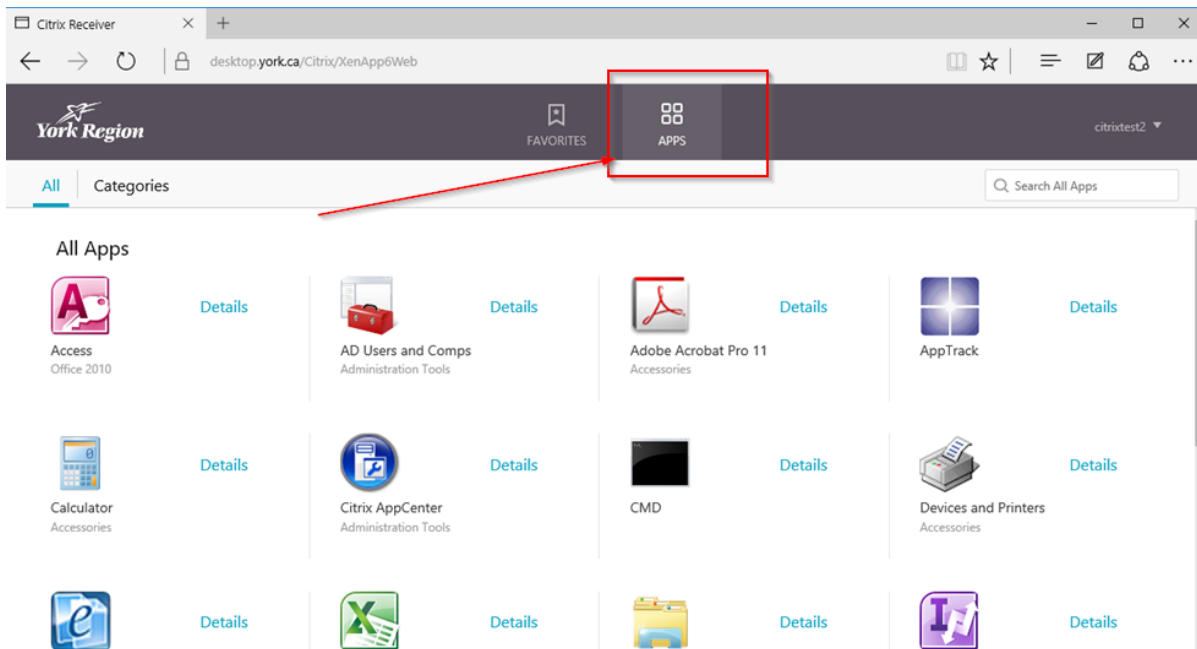
1. Open your web browser and type **York.ca/eservices** and click on **Access Your Citrix Desktop** or you can access Citrix directly at <https://desktop.york.ca> it will redirect you to the login page:



2. Type your York Region User Name and your password and then click **Log On**.
3. On the next page you will see the **FAVORITES** and **APPS** tabs.



- When you login the first time your Favorites folder will be empty, click on the **APPS** tab to access the Applications.



- You can select specific (frequently used) applications to view in the Favorites tab. Click on the relevant app icon, select **Details** and click **Add To Favorites**.



Calculator

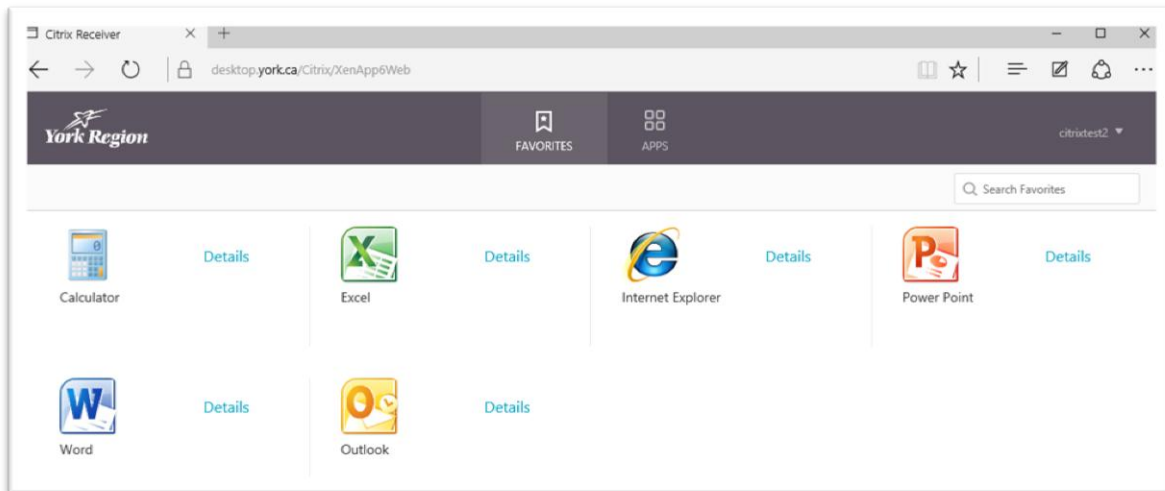
Accessories

Open

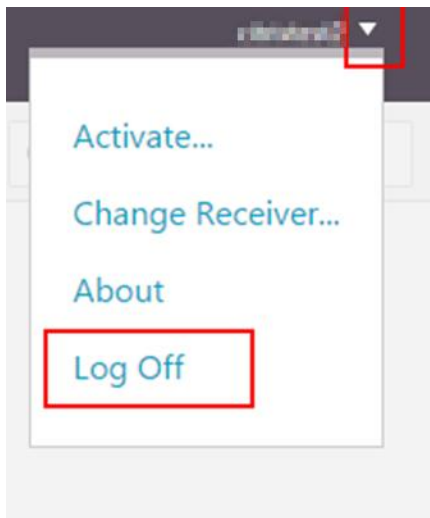
Add To Favorites

Calculator

- Next time you login you will see the applications you selected in the Favorites tab.



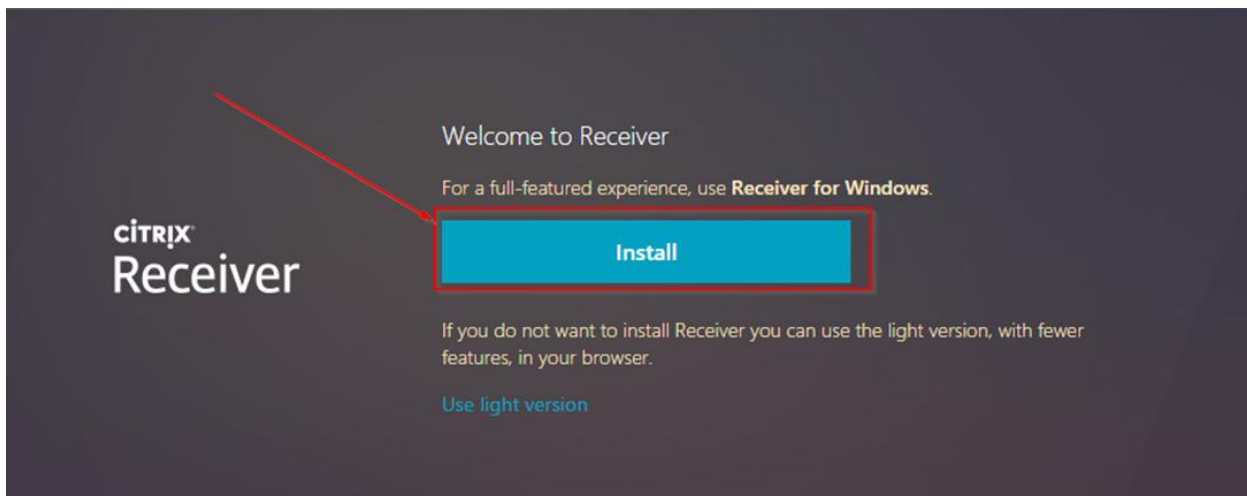
6. To Log Off from Citrix, click the arrow beside your user name in the upper-right corner and click **Log Off**.



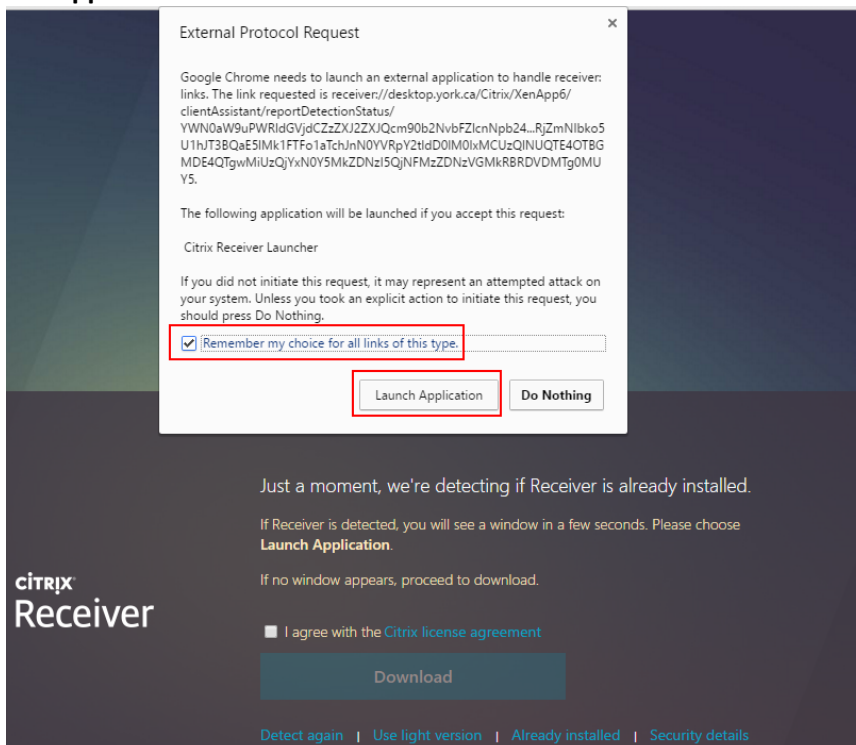
Accessing Citrix on Chrome

Use Link: <https://Desktop.york.ca>

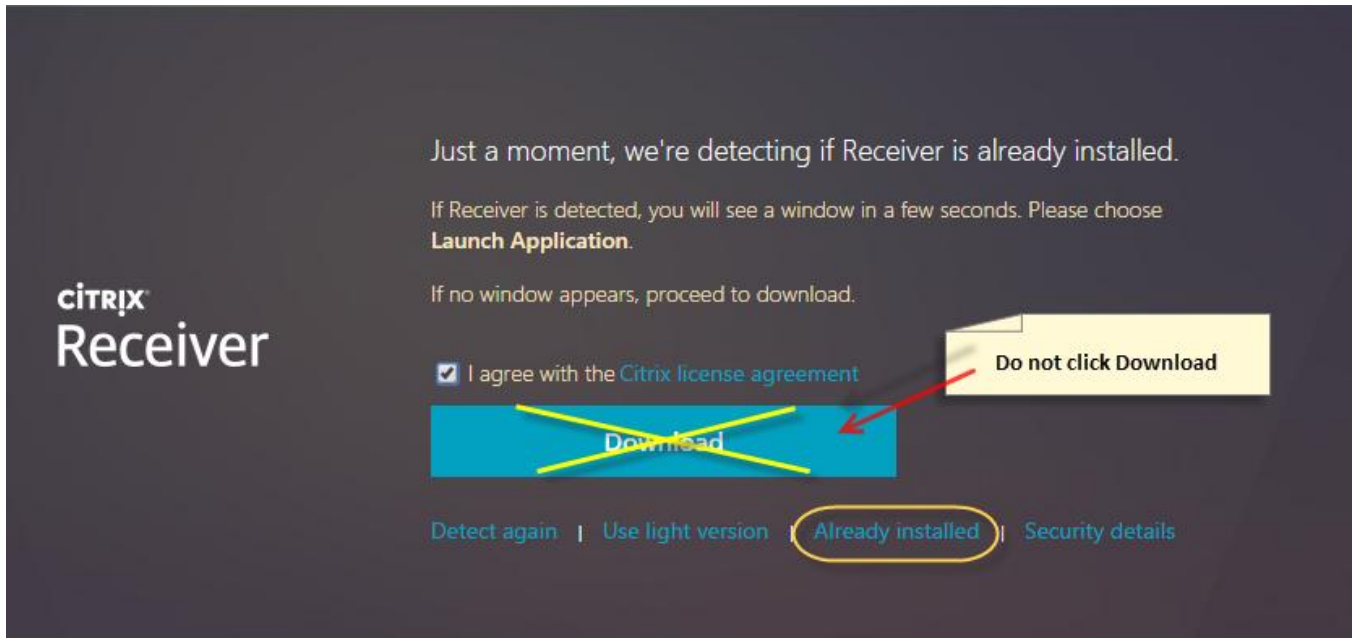
1. If you open your Citrix Receiver web page in **Chrome** the first time after the Login page you will see the following:



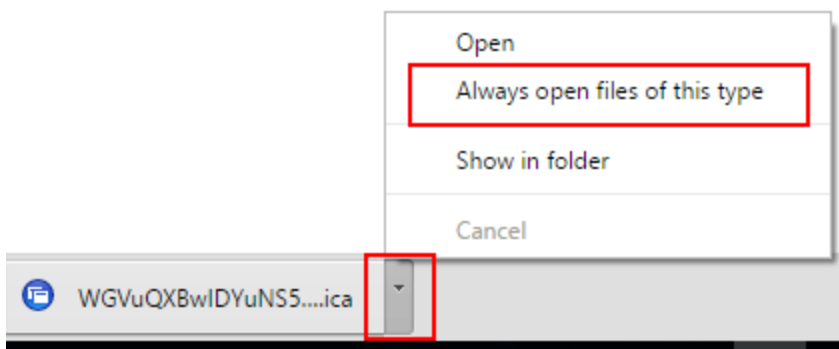
2. Click **Install** button. Do **NOT** click Use light version.
3. On the next page, check off the **Remember my choice for all links of this type** and click on **Launch Application**.



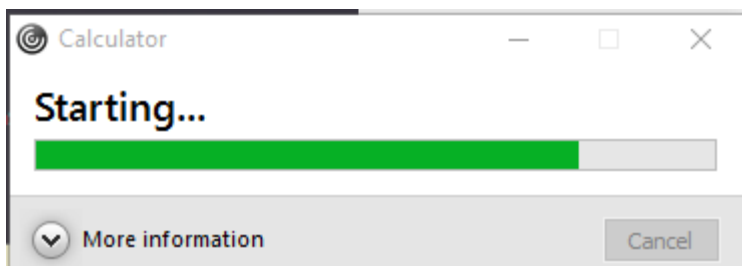
4. Check off - **I agree with the Citrix license agreement** and click **Already Installed**. Do **NOT** click **Download**



5. The first time the Citrix application is launched in the Chrome browser it will try to download a file.
 - Click on the drop down arrow on the right of the file and select **Always open files of this type**.

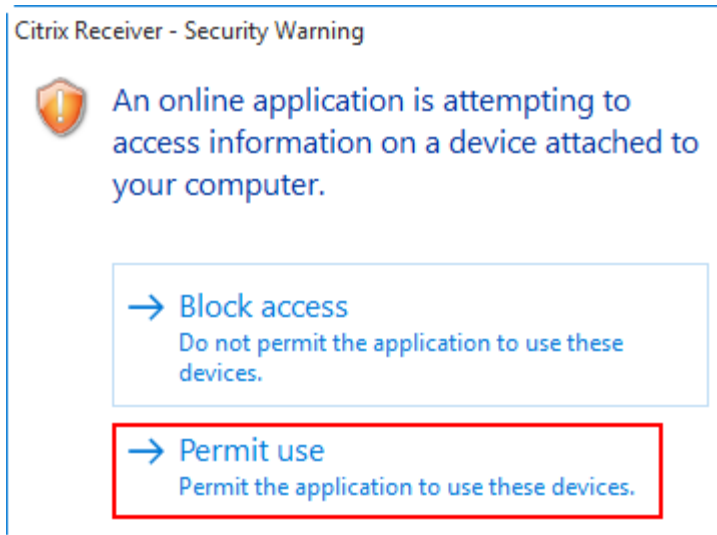


- Click on the application icon again and the application will start.



6. If this is the first time accessing Citrix on the computer, you will see the following window.

- Click **Permit use**.



7. To Log Off from the Citrix Receiver web site click the arrow beside your user name in the upper-right corner and click **Log Off**

