

Citrix Desktop for Home Computers – Windows 10 Instructions

You can use Citrix to create and access a virtual work desktop from your home computer.

Step 1 – Uninstall: To install the newest version of Citrix on your home computer, you must first [uninstall any previous versions you may have](#). If you are sure you don't have Citrix already installed on your computer, proceed to Step 2.

Step 2 – Install: [Install the Citrix Receiver on your home computer](#).

Step 3 – Access: [Access your Citrix Desktop using your web browser](#). (Special instructions for [accessing Citrix using Google Chrome](#))

If you experience issues accessing Citrix from other web browsers, please call the ITS Service Desk at x71111. The ITS Service Desk is available during evenings and weekends.

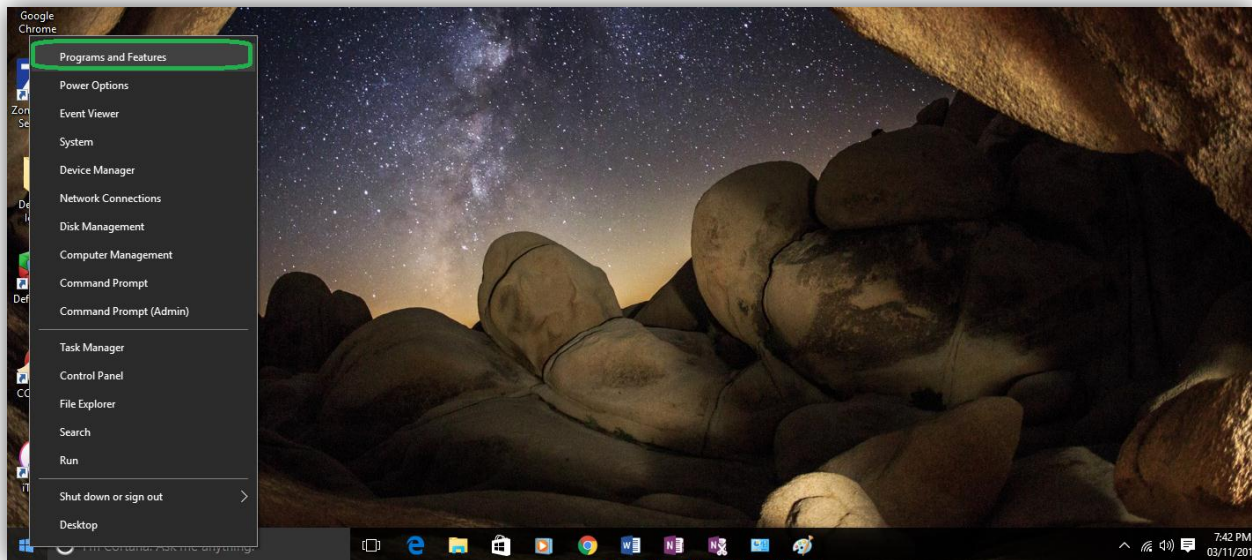
Step 1 – Uninstall previous versions of Citrix

To begin, you need to **uninstall** any previous versions of Citrix.

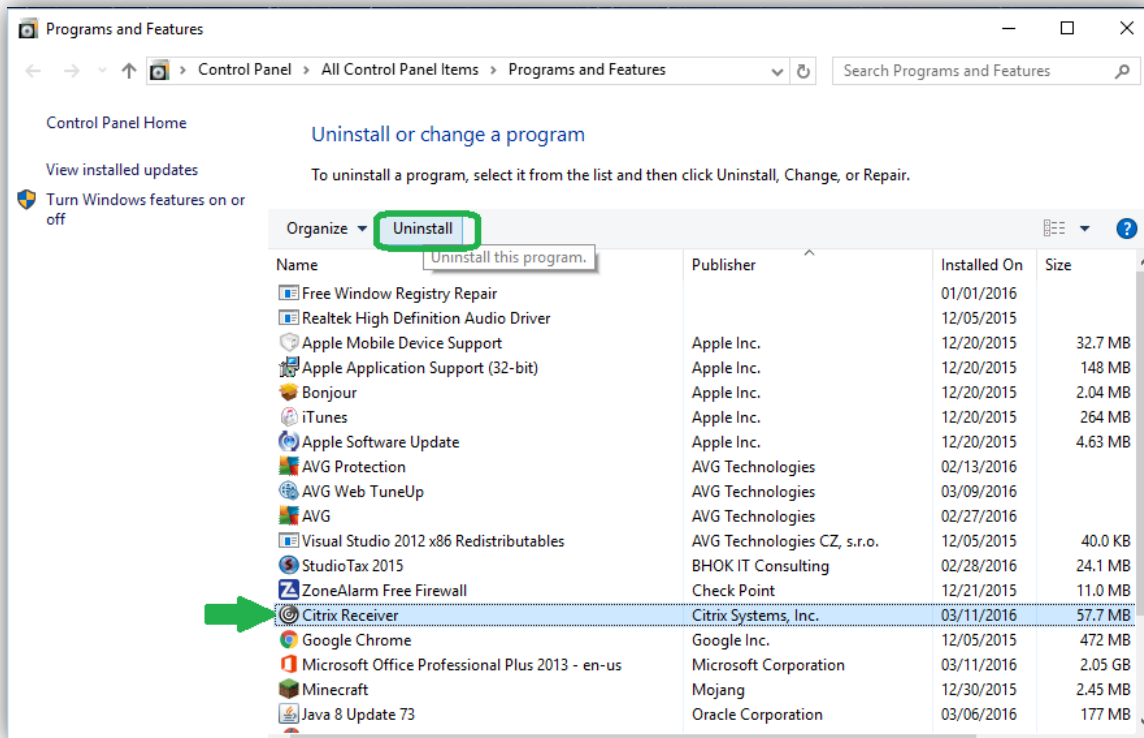
1. Mouse over to the Windows Start button found on the bottom left-hand corner.



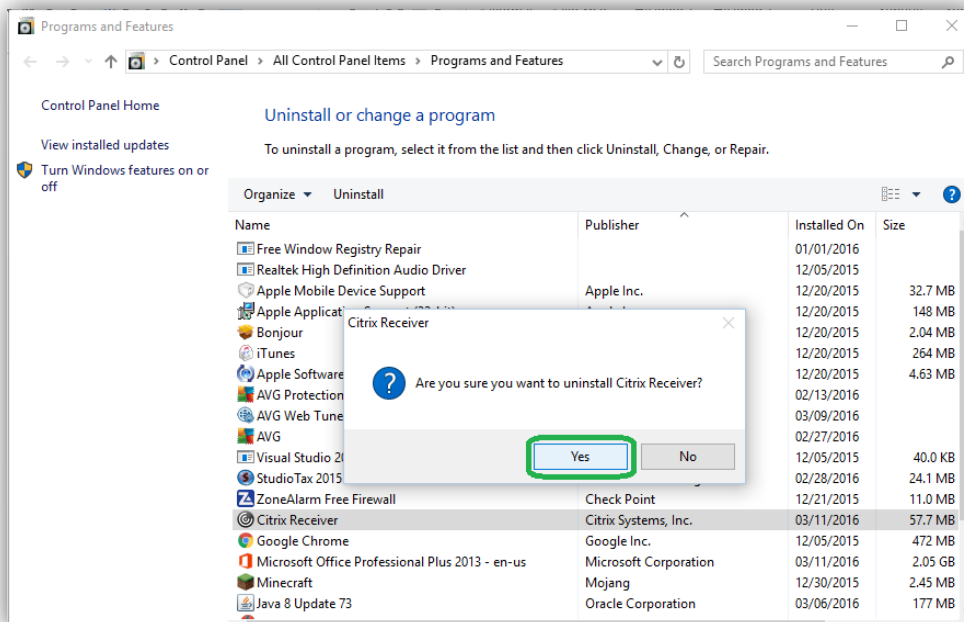
2. Right-click and select 'Programs and Features'.



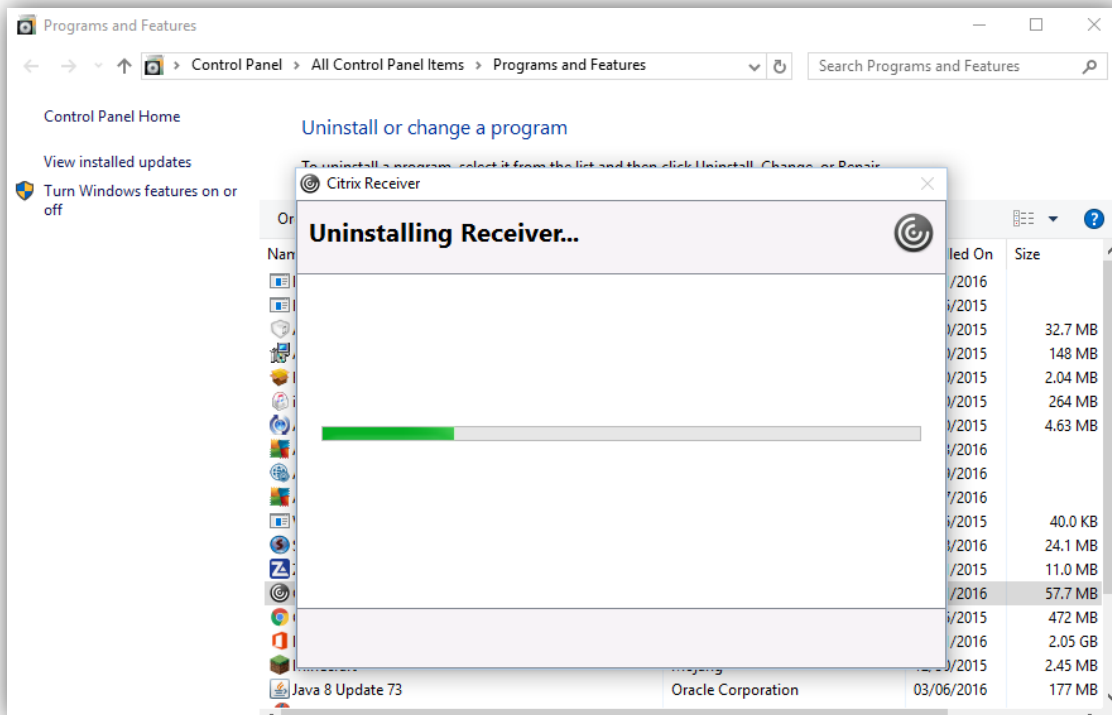
3. Select any programs with 'Citrix' in the name and click **Uninstall**.



4. **NOTE:** If you don't see any programs in the list with Citrix in the title, then you don't have it installed and can proceed to the [Step 2 - Install the Citrix Receiver](#) section.
5. Select **Yes**.



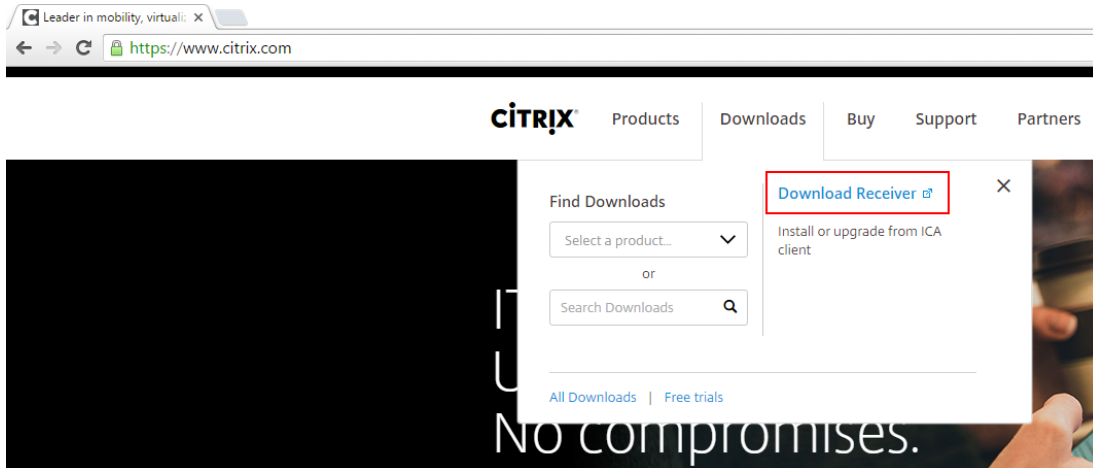
6. The uninstall process will begin, and the uninstall window will automatically close once the process has completed.



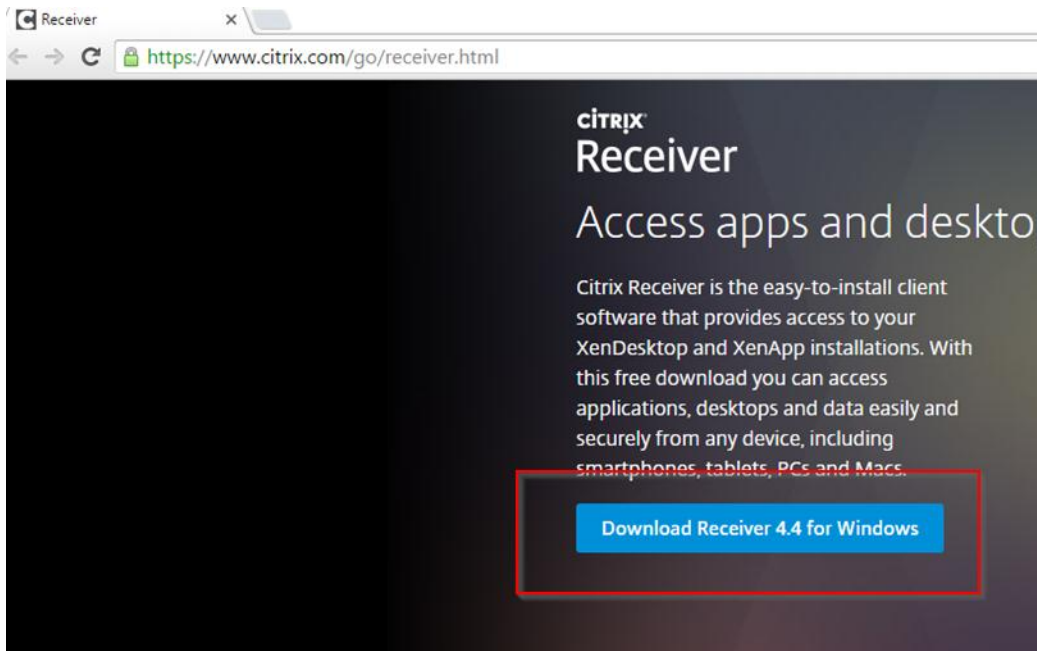
Step 2 – Install the Citrix Receiver

NOTE: You must be an administrator on your home computer to install the Citrix Receiver.

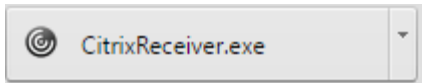
1. To install the new Citrix Receiver go to www.citrix.com and click **Download Receiver**.



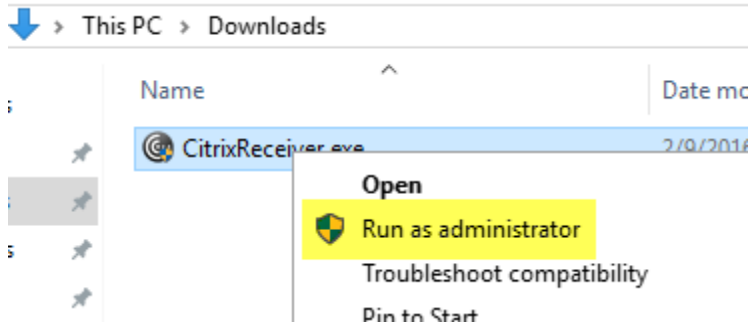
2. The site will automatically detect the correct version for your computer. Click on the download link.



3. You can select **Run** or you can select **Save File**.
 - If you select **Save File** then the **CitrixReceiver.exe** file will be downloaded to your computer.

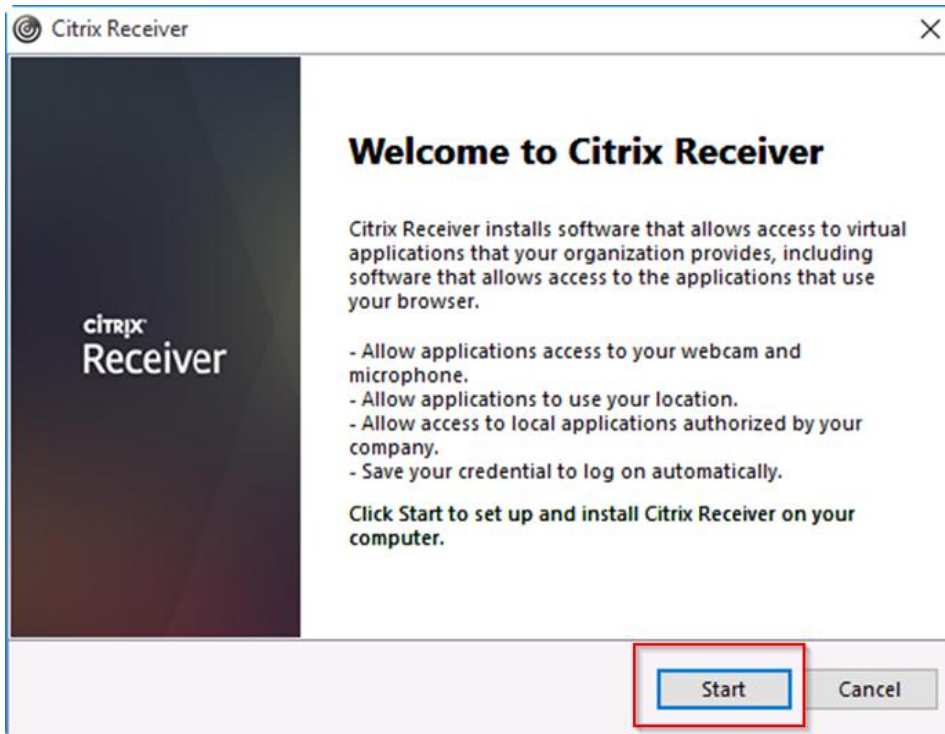


- Right click on the downloaded file and click **Run as administrator**.

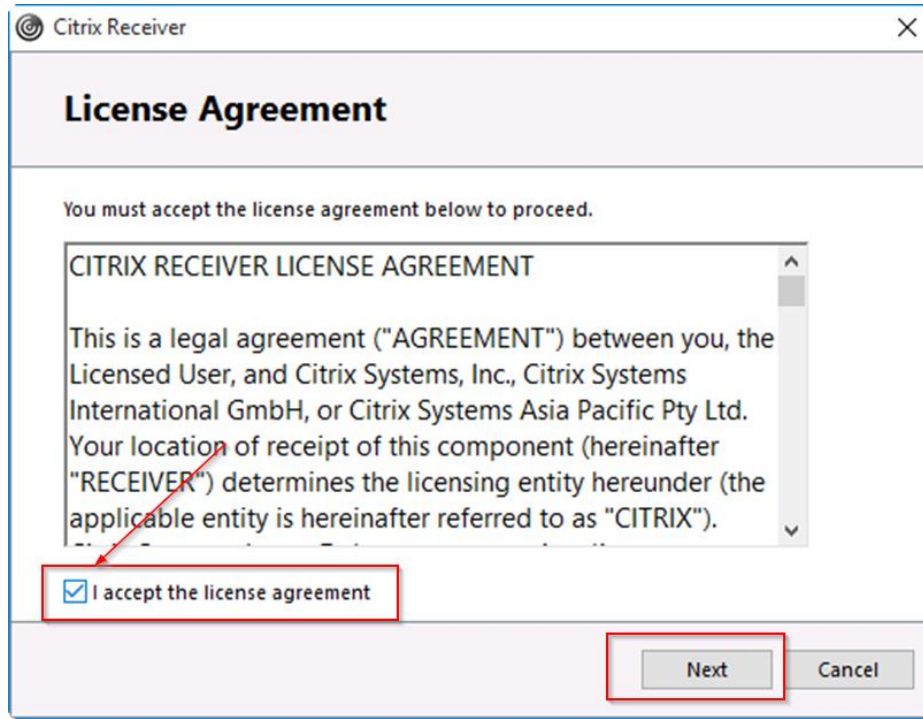


4. Follow the prompts in the installation wizard to complete the install.

- Select **Start**



- Read and select **I accept the license agreement**.
- Click **Next**



The screenshot shows the 'Citrix Receiver' window with the 'License Agreement' tab selected. The window title is 'Citrix Receiver'. The main heading is 'License Agreement'. Below the heading, it says 'You must accept the license agreement below to proceed.' There is a text area containing the 'CITRIX RECEIVER LICENSE AGREEMENT' text. A red arrow points from the 'I accept the license agreement' checkbox to the text area. The checkbox is checked. At the bottom right, there are 'Next' and 'Cancel' buttons. The 'Next' button is highlighted with a red box.

Citrix Receiver

License Agreement

You must accept the license agreement below to proceed.

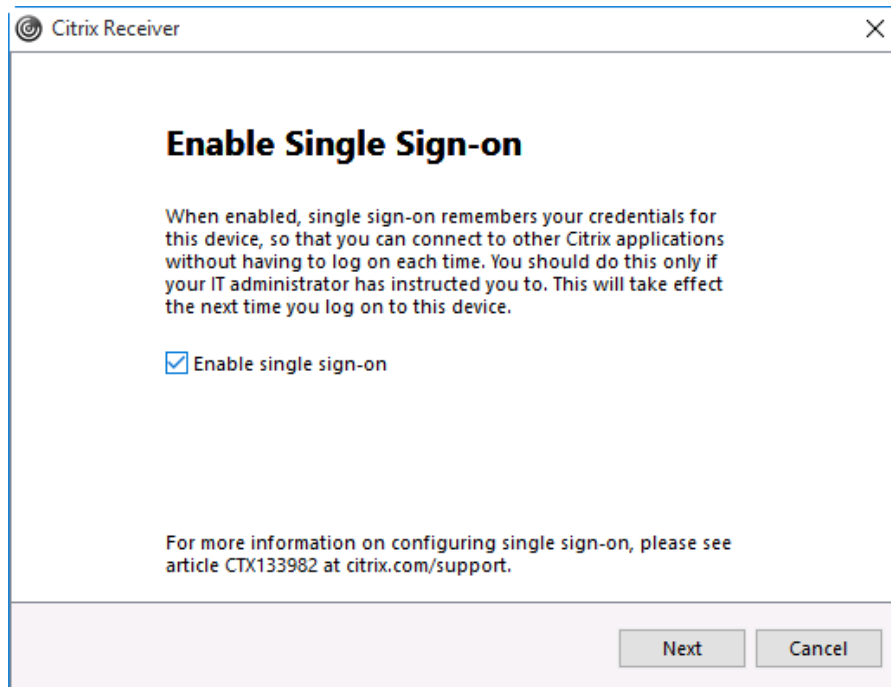
CITRIX RECEIVER LICENSE AGREEMENT

This is a legal agreement ("AGREEMENT") between you, the Licensed User, and Citrix Systems, Inc., Citrix Systems International GmbH, or Citrix Systems Asia Pacific Pty Ltd. Your location of receipt of this component (hereinafter "RECEIVER") determines the licensing entity hereunder (the applicable entity is hereinafter referred to as "CITRIX").

☒ I accept the license agreement

Next **Cancel**

5. Only select **Enable Single Sign-On** if you are the only user of your home computer.



The screenshot shows the 'Citrix Receiver' window with the 'Enable Single Sign-on' tab selected. The window title is 'Citrix Receiver'. The main heading is 'Enable Single Sign-on'. Below the heading, it says 'When enabled, single sign-on remembers your credentials for this device, so that you can connect to other Citrix applications without having to log on each time. You should do this only if your IT administrator has instructed you to. This will take effect the next time you log on to this device.' There is a checkbox labeled 'Enable single sign-on' which is checked. At the bottom right, there are 'Next' and 'Cancel' buttons.

Citrix Receiver

Enable Single Sign-on

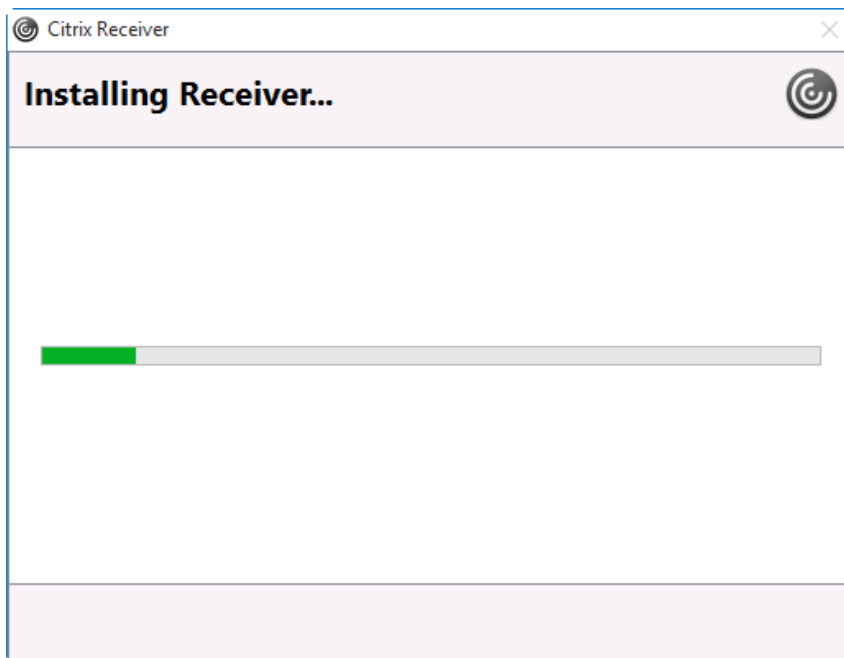
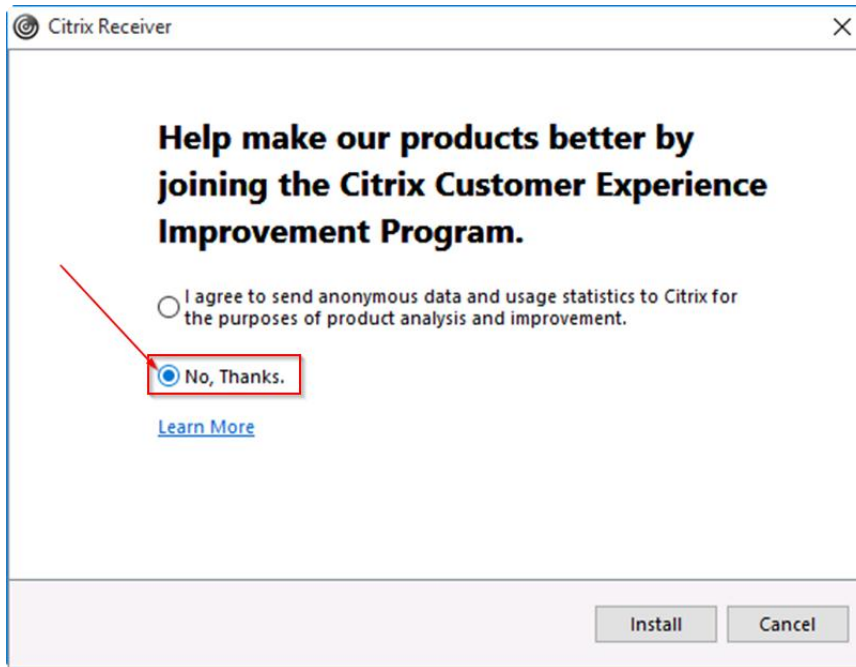
When enabled, single sign-on remembers your credentials for this device, so that you can connect to other Citrix applications without having to log on each time. You should do this only if your IT administrator has instructed you to. This will take effect the next time you log on to this device.

☒ Enable single sign-on

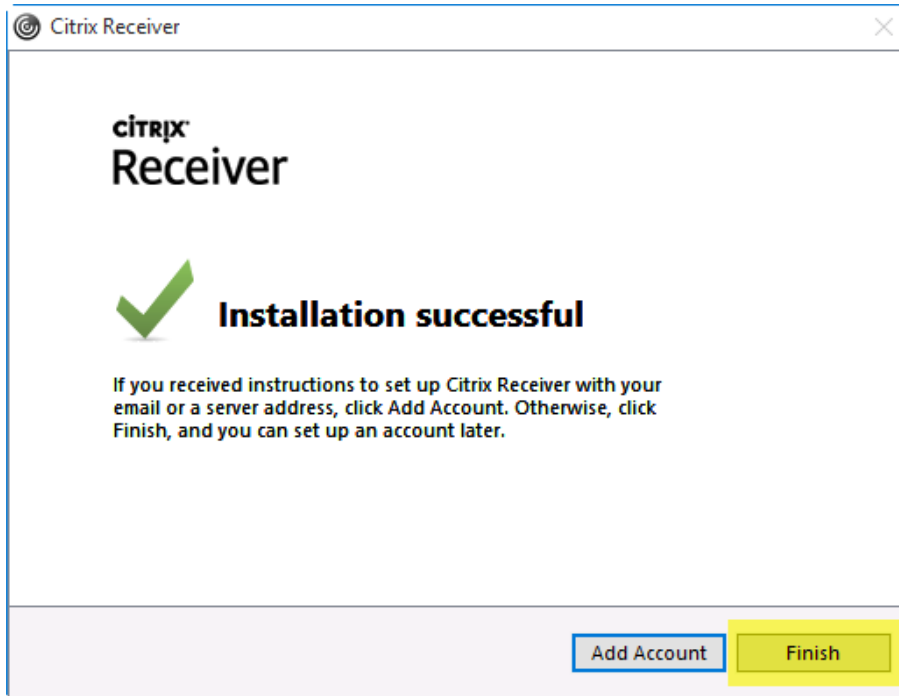
For more information on configuring single sign-on, please see article CTX133982 at citrix.com/support.

Next **Cancel**

1. Select **No, Thanks** for joining the Citrix Customer Experience and click **Install**.

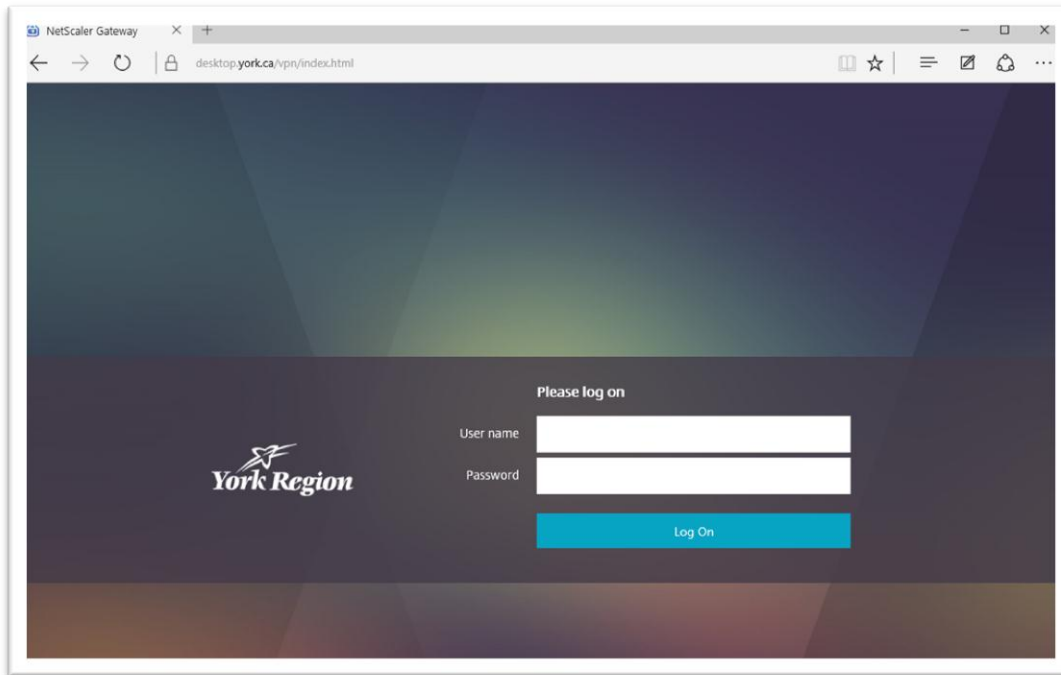


2. Do not click Add Account, just click **Finish**.

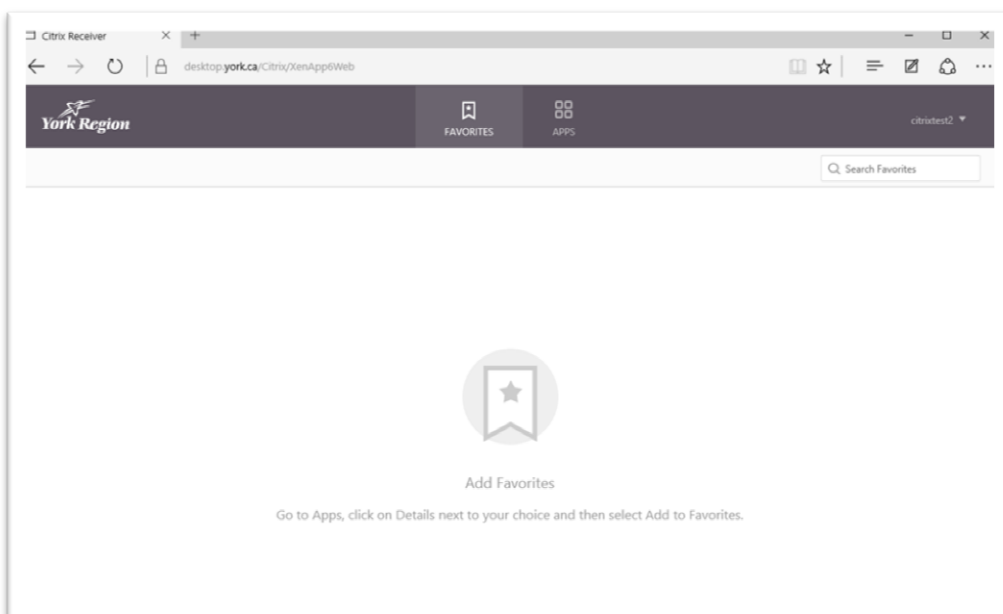


Step 3 – Access your Citrix Desktop

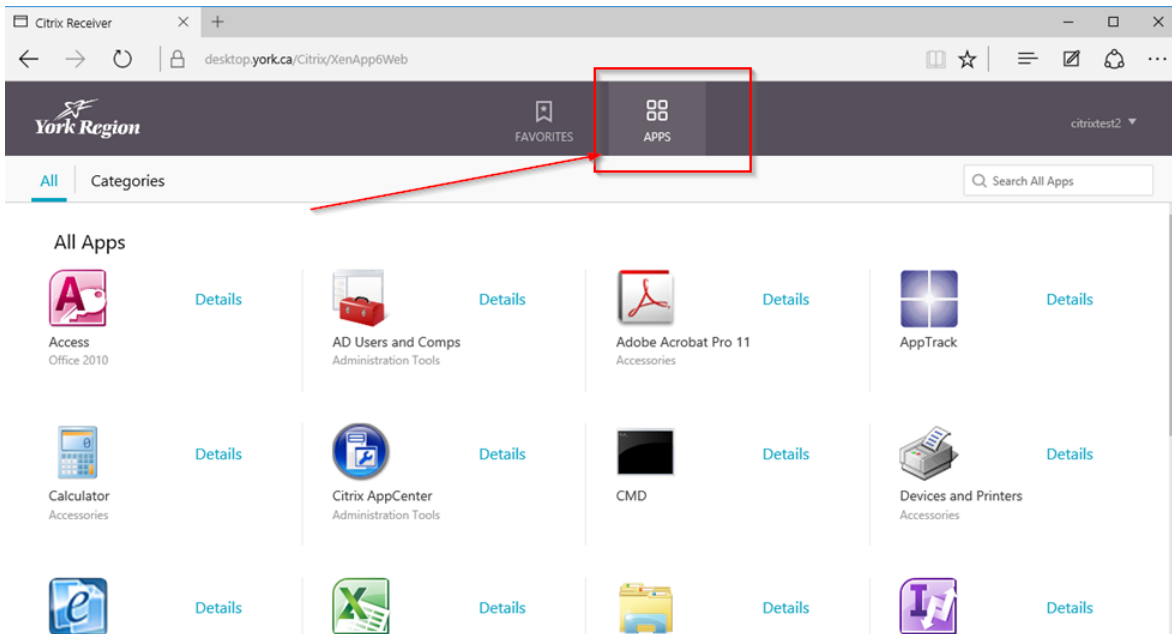
1. Open your web browser and type **York.ca/eservices** and click on **Access Your Citrix Desktop** or you can access Citrix directly at <https://desktop.york.ca> it will redirect you to the login page:



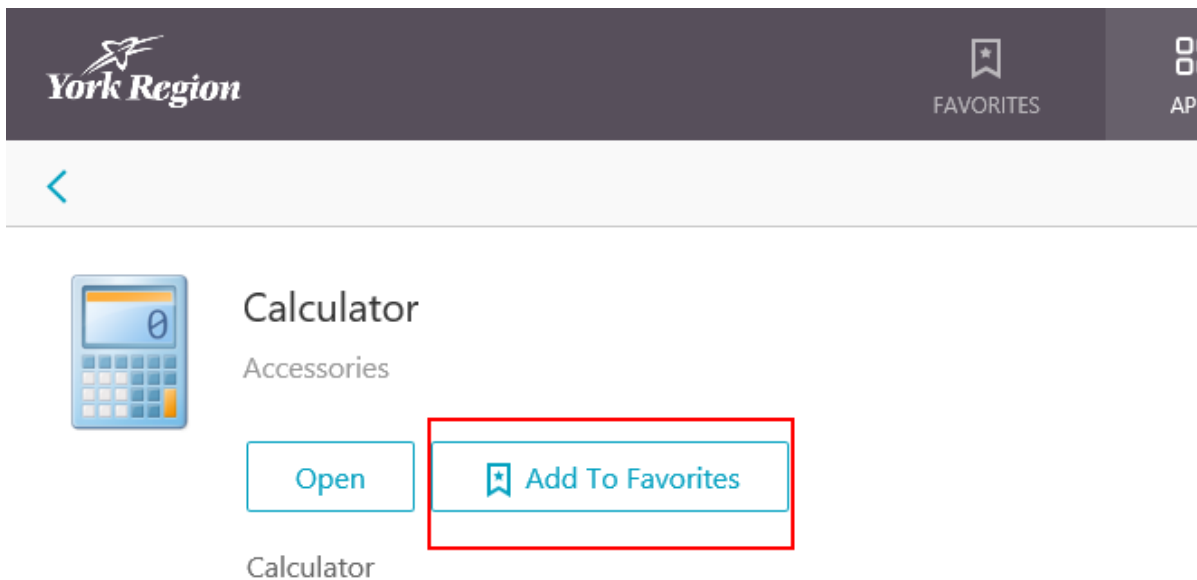
2. Enter your York Region User Name and your Password and click **Log On**.
3. On the next page you will see the **FAVORITES** and **APPS** tabs.



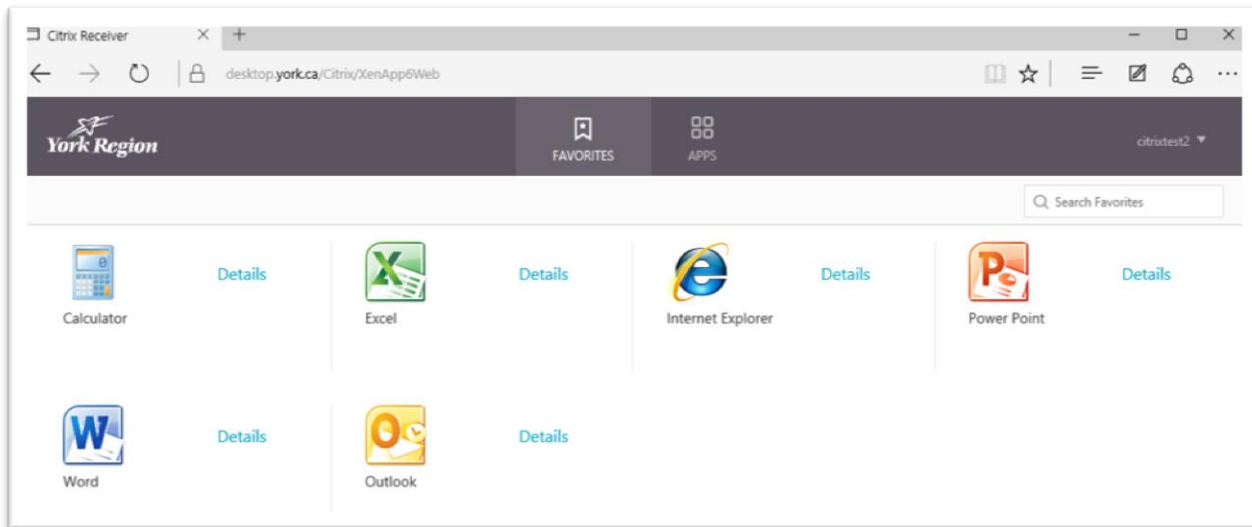
- When you login the first time your Favorites folder will be empty, click on the **APPS** tab to access the Applications.



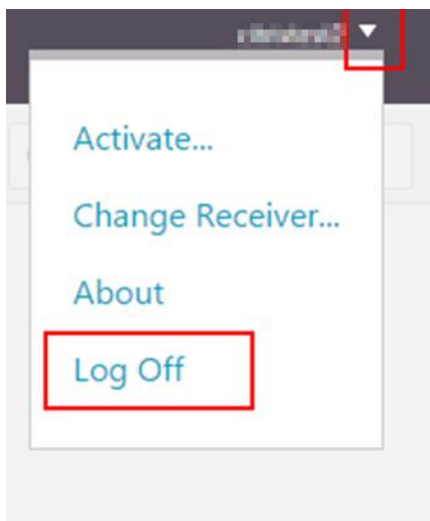
- You can select specific (frequently used) applications to view in the Favorites Tab. Click on the relevant app icon, select **Details** then click **Add To Favorites**.



- Next time you login you will see the applications you selected in the Favorites tab.



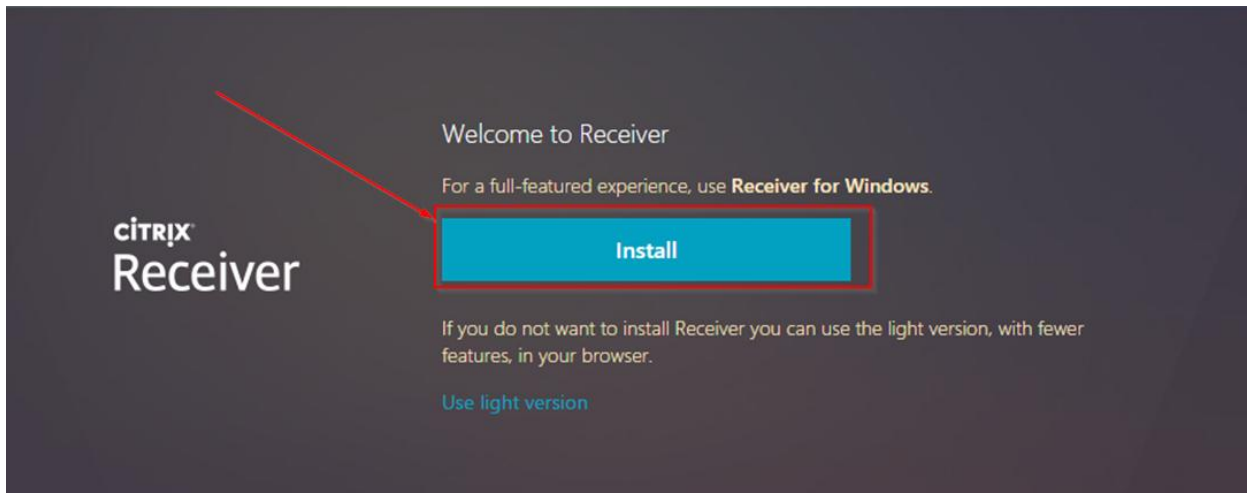
6. To Log Off from Citrix, click the arrow beside your user name in the upper-right corner and click **Log Off**.



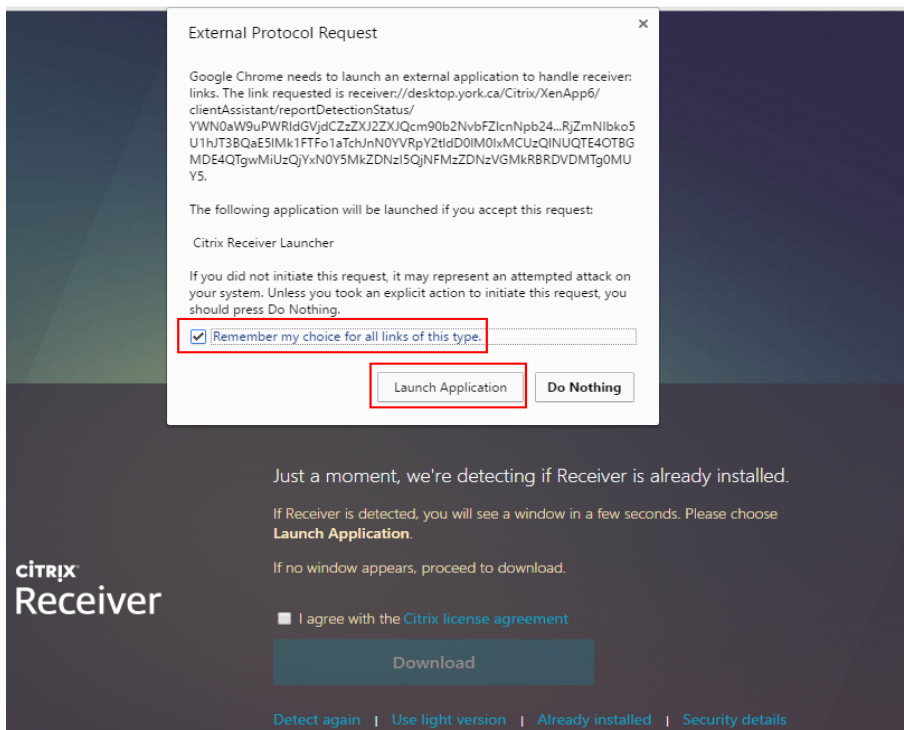
Accessing Citrix on Chrome

Use Link: <https://Desktop.york.ca>

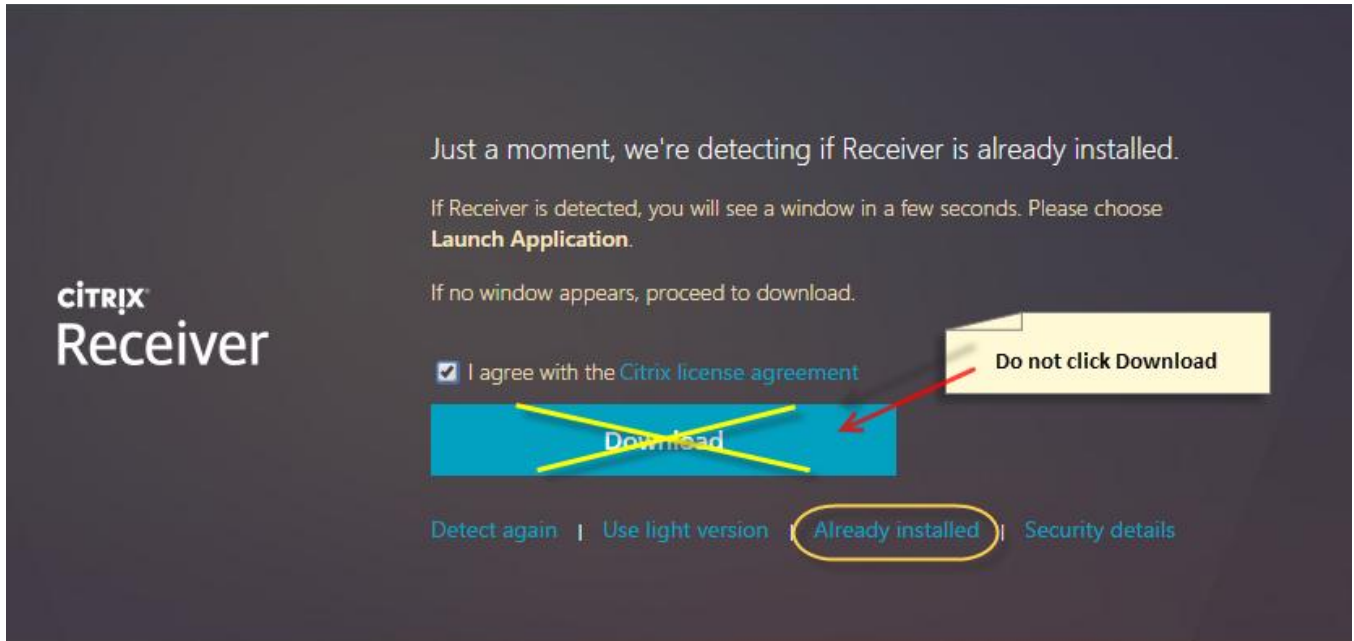
1. If you open your Citrix Receiver web page in **Chrome** the first time after the Login page you will see the following:



2. Click **Install** button. Do **NOT** click Use light version.
3. On the next page check off **Remember my choice for all links of this type** and click on **Launch Application**.

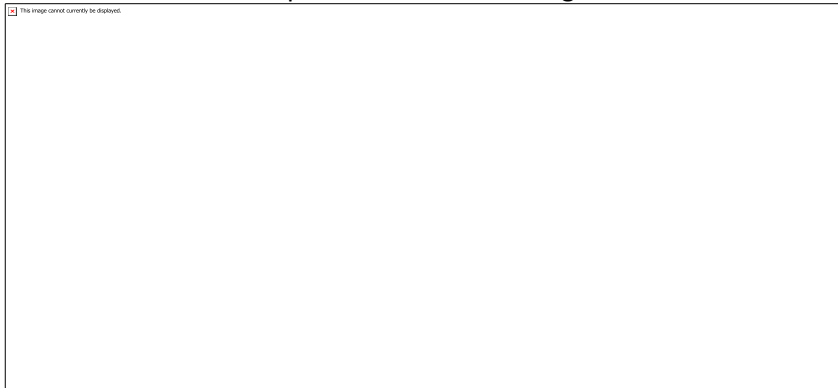


4. Check off - **I agree with the Citrix license agreement** and click **Already Installed**. Do **NOT** click **Download**.

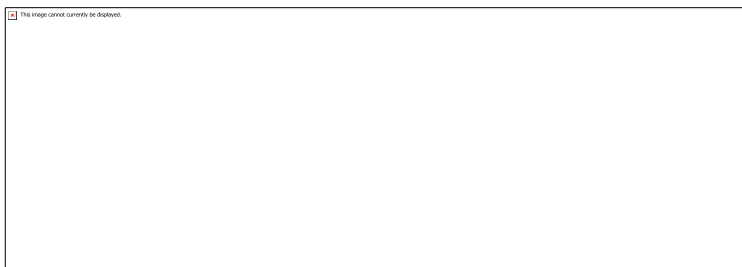


5. The first time the Citrix application is launched in the Chrome browser it will try to download a file.

- Click on the drop down arrow on the right of the file and select **Always open files of this type**.

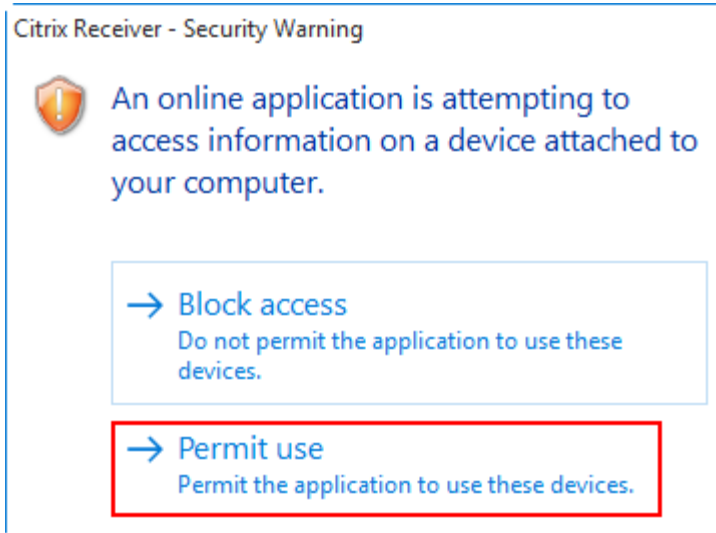


- Click on the application icon again and the application will start.



If this is the first time accessing Citrix on the computer, you will see the following window.

- Click **Permit use**.



6. To Log Off from the Citrix Receiver web site click the arrow beside your user name in the upper-right corner and click **Log Off**.

