

2021 DRAFT YORK REGION OFFICIAL PLAN

Live Public Open House

January 25, 2022



Visit www.york.ca/haveyoursay to find out how to get involved!

Land Acknowledgement

We acknowledge the land we are meeting on today is the traditional territory of many First Nations, including the Chippewas of Georgina Island and the Mississaugas of the Credit. These lands are now home to many diverse Indigenous peoples.

We also acknowledge that York Region falls under Treaty 13 with the Mississaugas of the Credit and the Williams Treaties with several Mississauga and Chippewas First Nations.

Meeting Objectives

- Introduce the York Region Project Team
- Share information on the York Region Official Plan process
- Present Draft York Region Official Plan
- Answer questions and gather feedback
- Share next steps and opportunities to stay involved

Agenda

- Planning 101
- What we have heard
- The Draft 2021 Official Plan
- What's Next?
- Questions and Comments

Tips for Virtual Engagement



Participants will be muted during the presentation.



Use the chat feature to ask questions.



Type your questions in the chat. If you are calling in, enter *9 to raise your hand. The host will call on you when it's your time to speak.



Turning on your camera is optional during the Q&A.



Audio Issues? Use your cell-phone audio by calling +1 647 558 0588 and enter meeting ID 883 0370 2279. Press *6 to toggle mute/unmute or *9 to raise your hand.



This meeting is being recorded and will be posted on york.ca/haveyoursay.

The background is a solid purple color with several large, overlapping, rounded geometric shapes in varying shades of purple, creating a layered, abstract effect. The shapes are primarily triangular and quadrilateral in form, with smooth, curved edges.

Who's here?

Meet the Team



Sandra Malcic
Director,
Long Range
Planning

Paul Bottomley
Manager,
Policy, Research and
Forecasting,
Long Range Planning

Teresa Cline
Manager,
Policy &
Environment,
Long Range Planning

Meet the Team



Sean Hertel
Sean Hertel
+ Associates
Urban
Planning



Nadia Galati
Principal,
PROCESS

Zoom Poll

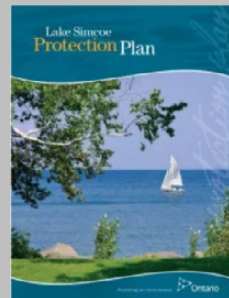
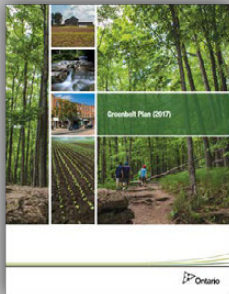
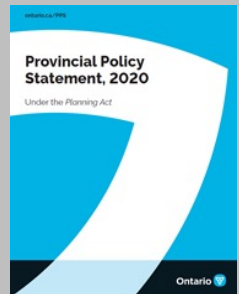
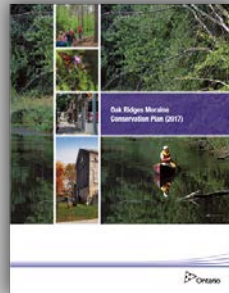
A little about you!



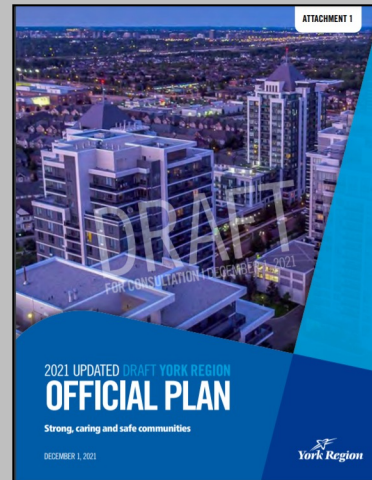
Planning 101

Ontario's Planning Hierarchy

Provincial



Regional



Local



York Region's Provincially Forecasted Growth to 2051

YORK REGION'S **POPULATION** is EXPECTED to GROW from



YORK REGION'S **EMPLOYMENT** is EXPECTED to GROW from



Regional Official Plan

- The Regional Official Plan (ROP) is a long-term plan that describes how the Region plans to accommodate future growth while meeting the needs of existing residents and businesses
- The ROP outlines where and how this growth can occur and areas of protection



What We Have Heard

The Journey up to the Draft Regional Official Plan

- Ongoing Public Engagement
- Engagement with the Province
- Updates to Regional Council with Direction Received
- Local Municipal and Conservation Authority Input
- Proactive Indigenous Community Engagement
- Development Industry Collaboration



Residents

- Continued development of complete communities
 - Ensure housing options
 - Improve housing affordability
 - How and where to accommodate growth
-
- Address climate change
 - Minimize impact of growth on agricultural areas
 - Environmental protection
-
- Concern over proposed new provincial highways

Government and Agency Partners

Indigenous Communities

- Land Acknowledgement
- Indigenous rights and perspectives
- Recognize and mitigate environmental threats
- Recognition of traditional Indigenous knowledge and way of life

Local Municipalities & Conservation Authorities

- Manage and phase growth
- Consider how policies will work at the local level
- Balance supportive policy direction with local flexibility
- Up to date natural heritage and water resource system information and mapping

Stakeholders

Individual Landowners

- Property specific concerns and interests

Development Industry

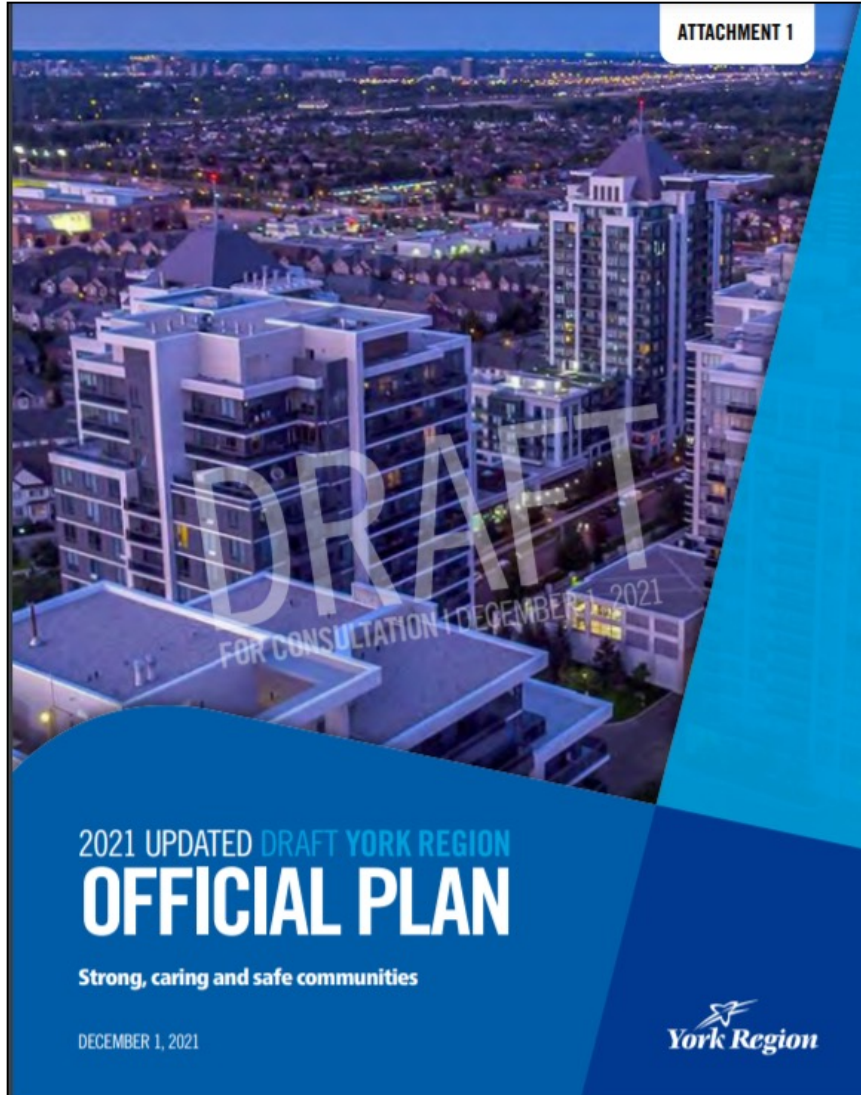
- Amount of land to accommodate future growth
- Growth management targets
- Accommodating market demand

Agricultural Community

- Impact of growth on agricultural areas (loss of agricultural land, food security)

The Draft 2021 York Region Official Plan

Draft Regional Official Plan Outline



Chapter 1: Introduction and Purpose of the Official Plan

Chapter 2: The Foundation for Complete Communities

Chapter 3: A Sustainable Natural Environment

Chapter 4: An Urbanizing Region

Chapter 5: Supporting the Agricultural System

Chapter 6: Servicing our Communities

Chapter 7: Implementation of the Official Plan

Maps: 1- 12 and Figure 1

Appendices

Key Guiding Principles of the Draft Regional Official Plan

Sustainable Growth
Management

Complete
Communities

Intensification in
Appropriate Areas

Protection of
Employment Lands

People and Transit
First Approach

Climate Change
Adaptation,
Mitigation and
Resilience

Affordable Housing
Options

Protection of
Agricultural System

Protection
of Regional
Greenlands System
and Water Resource
System

Full-Cost Accounting
Approach



Key Policy Theme Areas

GROWTH MANAGEMENT



STRATEGIC GROWTH AREAS



MAJOR TRANSIT STATION AREAS



COMMUNITY AREAS



HOUSING



EMPLOYMENT AREAS



ENVIRONMENT and RESOURCES



AGRICULTURAL SYSTEM



NATURAL SYSTEMS



CLIMATE CHANGE

Growth Management

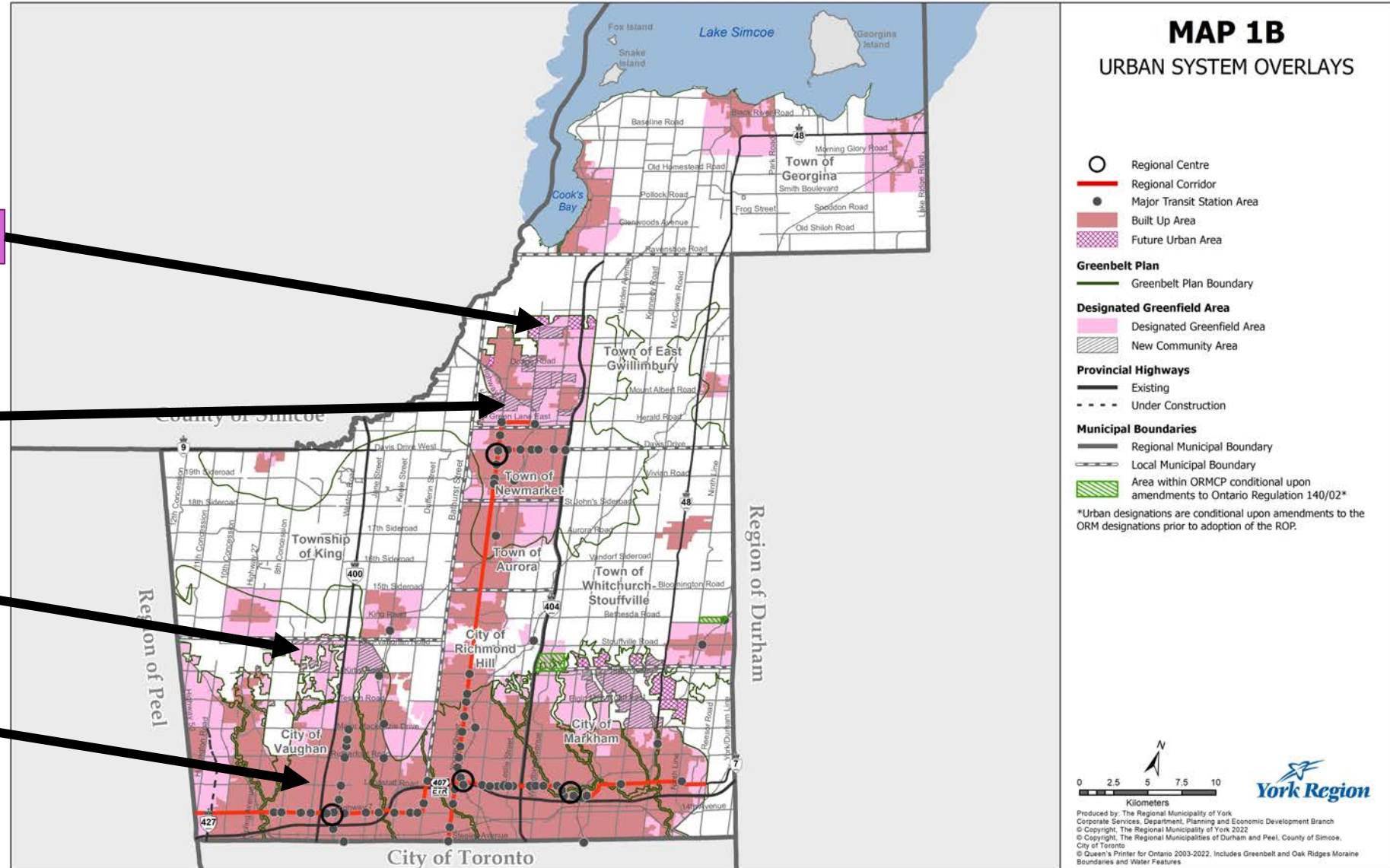
Population and Employment Forecast to 2051

York Region Population and Employment Forecast by Local Municipality

MUNICIPALITY	POPULATION		EMPLOYMENT	
	2021	2051	2021	2051
AURORA	64,300	84,700	29,900	41,300
EAST GWILLIMBURY	36,500	127,600	10,300	43,800
GEORGINA*	49,300	70,100	9,900	20,700
KING	28,300	50,000	9,800	16,500
MARKHAM	351,800	608,500	193,200	301,700
NEWMARKET	90,800	115,900	49,200	58,500
RICHMOND HILL	213,700	319,600	86,000	122,800
VAUGHAN	341,600	570,400	240,100	351,500
WHITCHURCH-STOUFFVILLE	50,300	88,100	16,900	34,600
YORK REGION	1,226,600	2,034,900	644,700	991,400

*GEORGINA'S FORECAST INFORMATION HAS BEEN UPDATED FROM THE LIVE MEETING

The Urban System



Future Urban Areas

New Community Areas

Designated Greenfield Area

Built-up Area

Strategic Growth Areas

REGIONAL INTENSIFICATION HIERARCHY

REGIONAL CENTRES

MAJOR TRANSIT STATION AREAS - SUBWAY STATION

MAJOR TRANSIT STATION AREAS - OTHER

REGIONAL CORRIDORS
OUTSIDE of MAJOR TRANSIT STATION AREAS

LOCAL CENTRES and CORRIDORS



Major Transit Station Areas

- Direct growth to areas surrounding 78 higher order transit station or stops
- Focus of higher densities and intensification
- New Growth Plan requirement for the Region



Community Areas

- Complete communities with opportunities to live, work, play and learn
- Modern, compact, inclusive and diverse
- Pedestrian oriented
- Housing choice
- Local services and amenities
- Where land uses are mixed
- Supported by transit



Housing

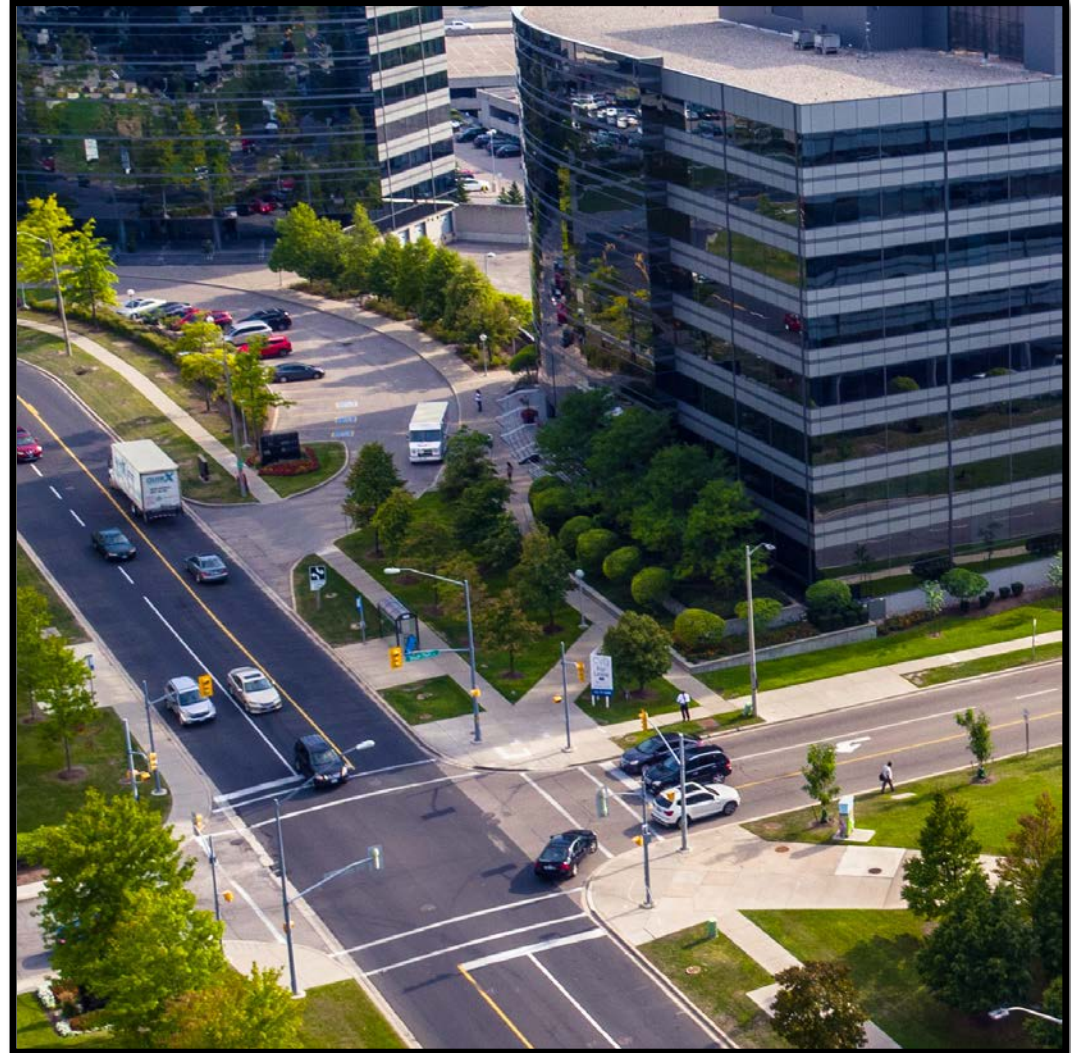
- Strengthened policies for a range and mix of housing options
- Ensure adequate supply
- Affordable housing targets
- Rental housing target of 1,000 units per year
- Commitment to pursue ways to increase affordable housing options



Photo credit: City of Markham

Employment Areas

- Focus of economic development
- Ensure long term protection through designation
- Includes proposed density targets for clusters of employment areas
- A range of high-quality jobs close to where people live



Providing Critical Infrastructure and Services

- Continued investment in Rapid Transit and Subways
- Align growth with the delivery of essential infrastructure
- Accessible and responsive human services



Environment and Resources

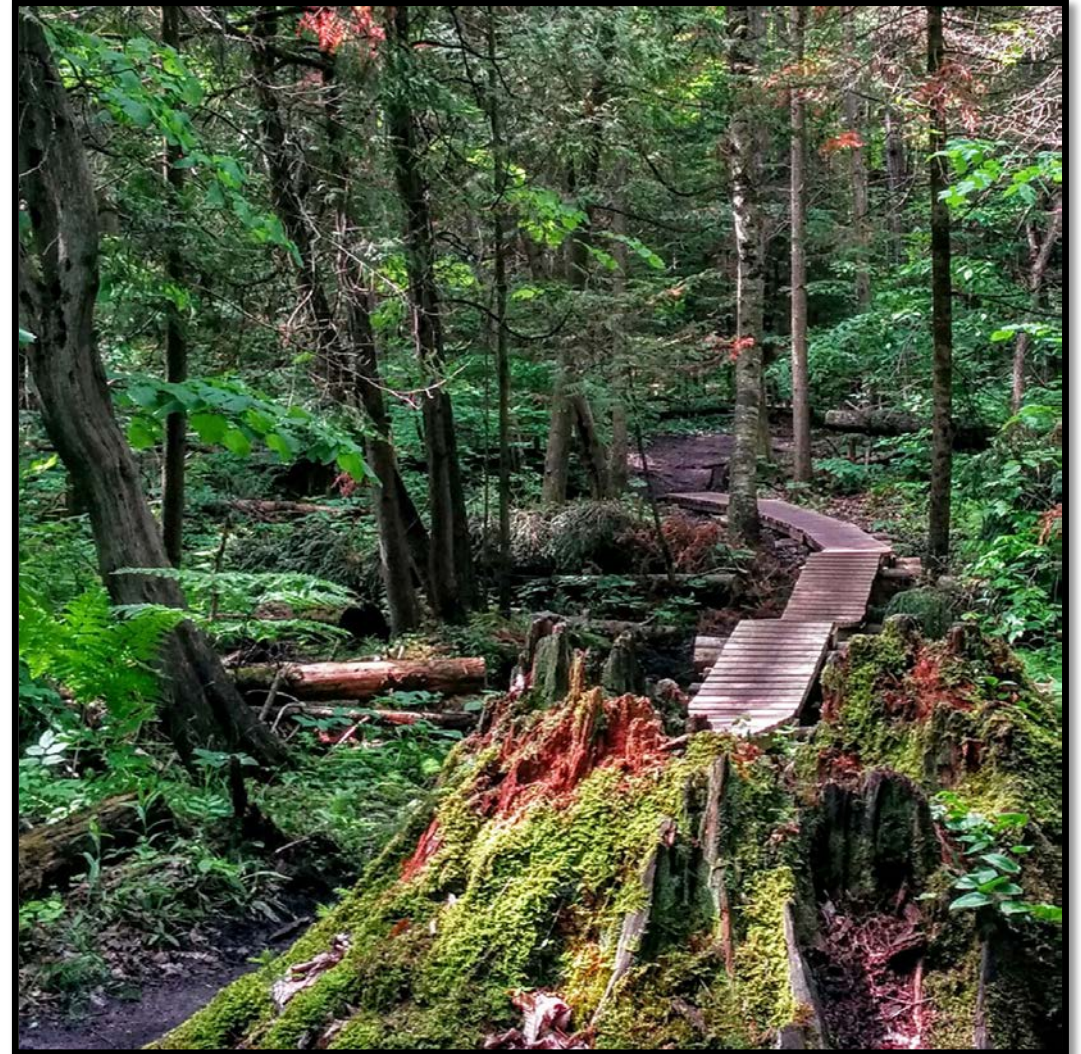
Agricultural System

- Implement an agricultural systems approach
- Support agriculture and on-farm diversified uses
- Manage the introduction of new non-agricultural uses
- Strengthened agri-food network policies



Natural Systems

- Continue to identify and protect the Regional Greenlands System
- Introduced new tree canopy cover target
- Updated Water Resource System policies to identify, protect, improve or restore vulnerable and sensitive surface and ground water
- Up to date mapping and information



Climate Change

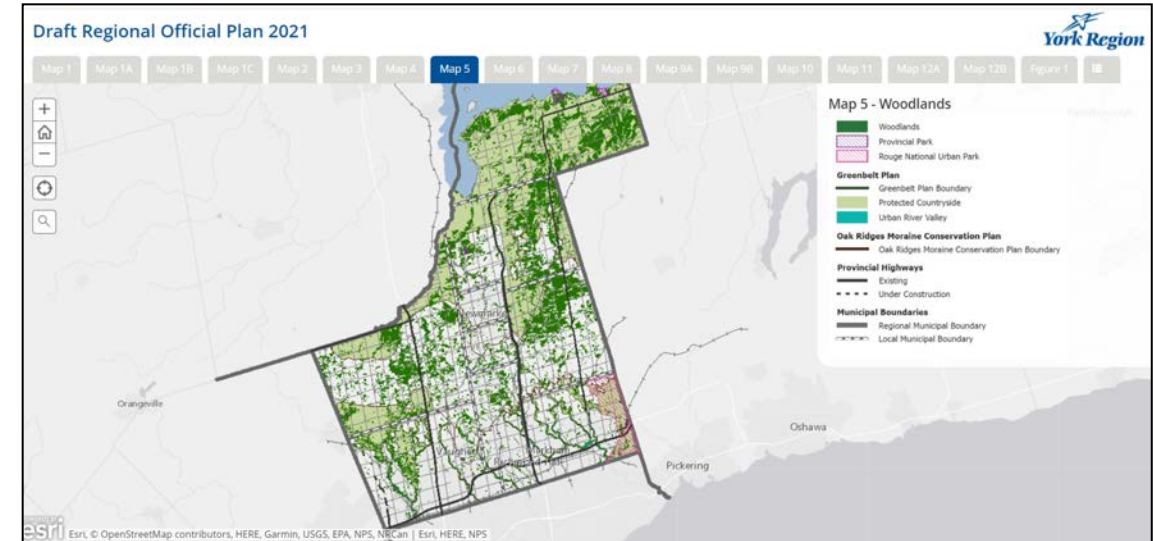
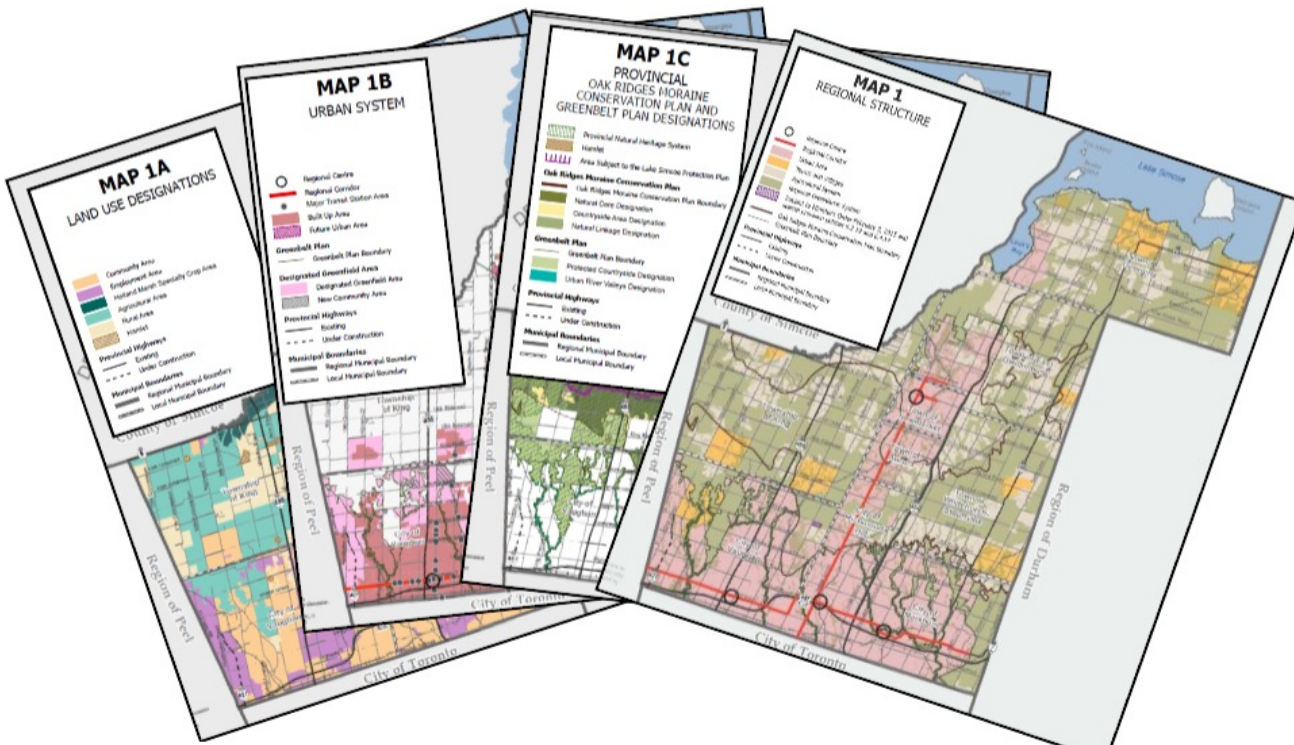
- Reduce greenhouse gas emissions
- Reduce vulnerability and increase resilience
- Align with Climate Change Action Plan and Community Energy and Emissions Plan
- Continue to work partners to achieve climate change goals



Photo courtesy of Sjoerd Witteveen/Torstar

Maps and Appendices

Draft Region Official Plan Maps

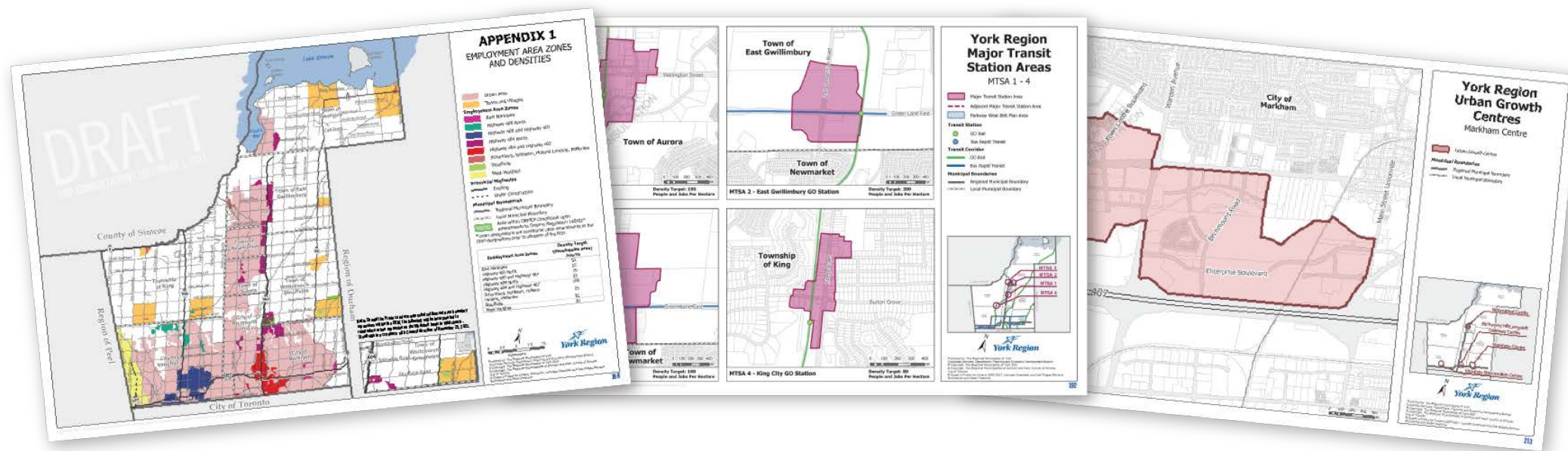


Link to Interactive Web Maps:

<https://york.maps.arcgis.com/apps/MapSeries/index.html?appid=a11a6189d269461e8aad731b5eb8d9c0>

Draft Region Official Plan Appendices

- Employment area zones and densities
- Detailed MTSA mapping and densities
- Delineated Provincial Urban Growth Centres



The background is a solid purple color with several large, overlapping, semi-transparent geometric shapes in varying shades of purple. These shapes include triangles, quadrilaterals, and polygons that create a layered, abstract effect. The text "What's Next?" is positioned on the left side of the image, centered vertically relative to the upper half.

What's Next?

Next Steps



Stay Involved: We want to hear from you!

- Website: www.york.ca/haveyoursay
- Download draft Region Official Plan policies
- Download draft maps and figures
- Interactive maps
- Complete on-line survey at www.research.net/r/JWK3BTR



Please submit questions or comments to futureyork@york.ca



Questions and Comments