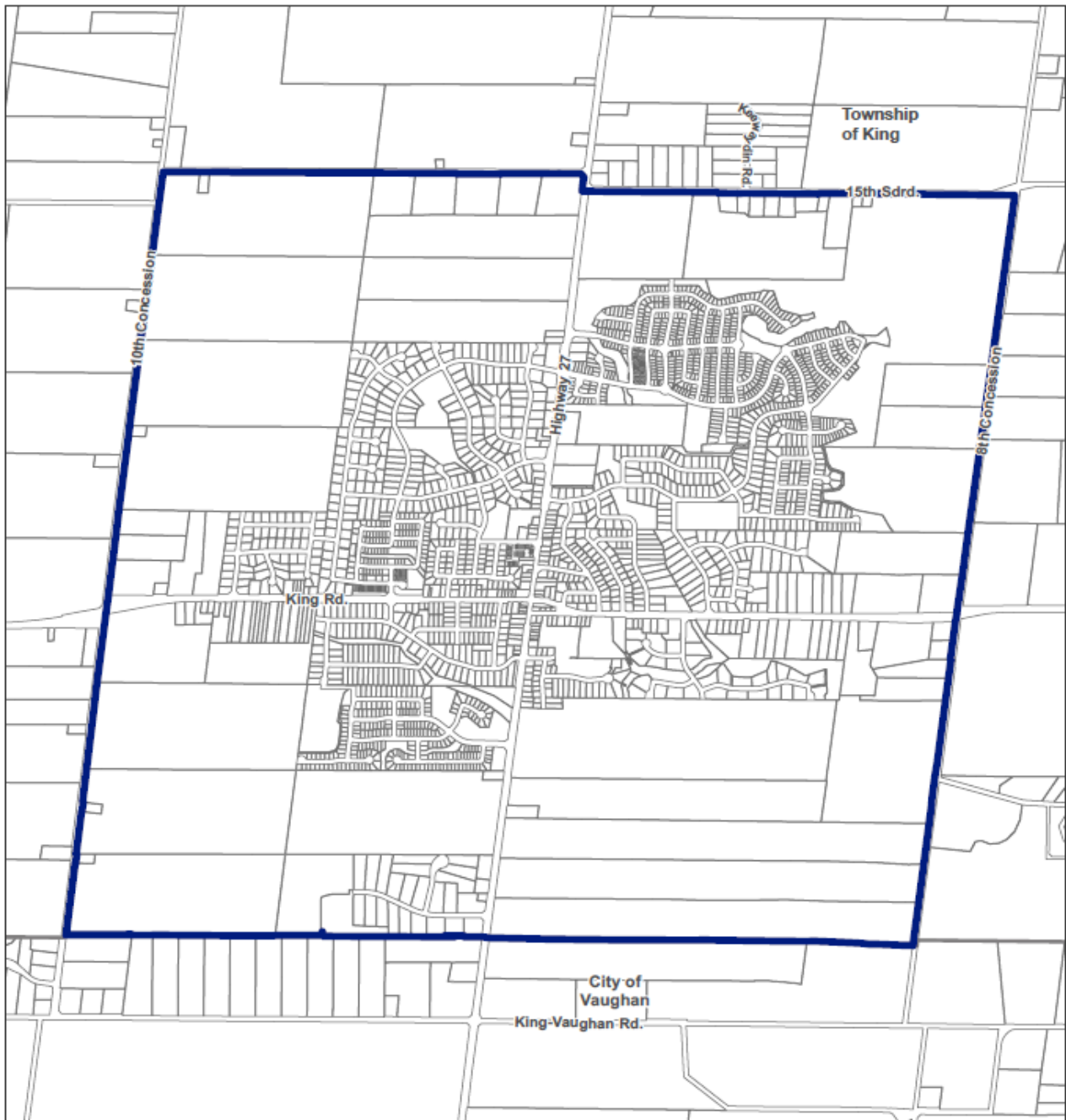


SCHEDULE B LANDS SUBJECT TO THIS BY-LAW



SCHEDULE "B" Lands Subject to This Bylaw

Produced by:
The Regional Municipality of York,
Corporate Services,
Planning and Economic Development
March 2026
Data: Queen's Printer for Ontario
2003-2026



0 125 250 500
m



Village Boundary - Area to which
Nobleton ASDC Bylaw applies