

# 2025 Annual Performance Report

## York Region Roads Stormwater Management System



The Regional Municipality of York

# 2025 Annual Performance Report York Region Roads Stormwater Management System

Consolidated Linear Infrastructure Environmental  
Compliance Approval (CLI ECA): 013-S701  
for York Region Roads Stormwater Management System

**Prepared by: Transportation Stormwater Asset Management, Public Works, York  
Region**

*For any inquiries related to the information contained in this report, please call 1-877-  
464-9675 or email: [accessyork@york.ca](mailto:accessyork@york.ca)*

	<b>Issue Number: 1</b>
<b>System Owner:</b> The Regional Municipality of York	
<b>System Name:</b> York Region Roads Stormwater Management System	
<b>Reporting Period:</b> January 1, 2025 to December 31, 2025	
<b>Submitted to:</b> Director, Ministry of the Environment, Conservation and Parks (MECP)	<b>Report Date:</b> April 28, 2026

# Table of Contents

## Contents

OVERVIEW ..... 4

REPORTING – ANNUAL PERFORMANCE..... 5

    A. Reporting Period (5.2.1) ..... 5

    B. System Condition and Performance (5.2.2)..... 5

    C. Environmental Trends – Previous 5 Years (5.2.3) ..... 6

    D. Operations, Inspections, Maintenance and Repairs (5.2.4 and 5.2.5) ..... 6

    E. Monitoring Equipment (5.2.6)..... 10

    F. Public Inquiries Summary (5.2.7) ..... 10

    G. Alterations to the Authorized Roads Stormwater System Summary (5.2.8) ..... 10

    H. Spills Summary (Sec. 5.2.9)..... 13

    I. System Improvement Actions Summary of Actions Taken and Proposed Improvements (5.2.10)..... 13

    J. Status of Previously Reported Actions (Sec. 5.2.11) ..... 14

## OVERVIEW

This report has been prepared in fulfillment of the requirement under Consolidated Linear Infrastructure Environment Compliance Approval (CLI ECA) Number 013-S701 for York Region Roads Stormwater Management System, to submit an annual performance report to the Ministry of Environment, Conservation and Parks (MECP) summarizing the status of the stormwater system listed in the CLI ECA.

York Region authorized stormwater management system serves York Region urban and rural roads. It comprises of storm sewers, culverts, ditches, maintenance holes, catch basins, super pipe storage facilities, storage tanks, oil grit separators, stormwater management ponds, low impact development facilities (LIDs) and stormwater pumping station. **Table 1** provides a summary of the York Region Roads Stormwater Management System.

**Table 1 – Summary of Roads Stormwater Management System**

Description	Quantity	Length
Storm Sewers	21,476	608 km
Culverts	7,985	123 km
Ditches	14,064	1,229 km
Maintenance Holes	9,671	
Catch Basins	11,439	
Super Pipe Storage Facilities	43	
Storage Tanks	12	
Oil Grit Separators	330	
Stormwater Management Dry Ponds	6	
Stormwater Management Wet Ponds	2	
Low Impact Development Facilities (LIDs)	64	
Stormwater Pumping Station	1	

# REPORTING – ANNUAL PERFORMANCE

The report is organized into sections that correspond to the subsections of Stormwater CLI ECA Schedule E: Operating Conditions, Section 5.2, which are noted in the headings.

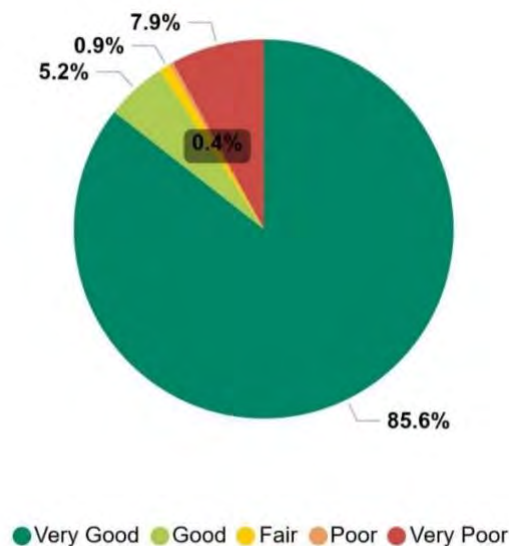
## A. Reporting Period (5.2.1)

January 1<sup>st</sup>, 2025 to December 31<sup>st</sup>, 2025

## B. System Condition and Performance (5.2.2)

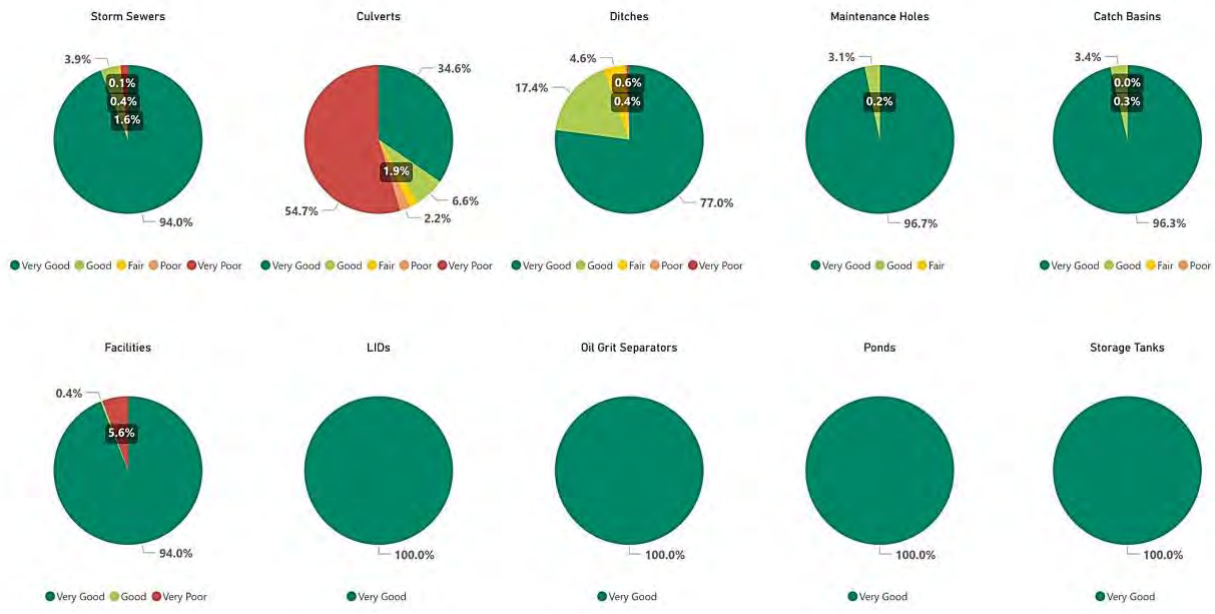
In 2025 York Region initiated the development of the *York Region Stormwater Asset Management Plan* to establish the replacement value of all roads stormwater assets and assess their condition using an age-based methodology.

**Figure 1** presents the condition distribution of the Region’s stormwater assets based on the age-based analysis. The results indicate that the majority of roads stormwater assets are in Very Good condition (85.6%), suggesting that most of the stormwater system is relatively new or has significant Remaining Service Life. An additional 5.2% of roads stormwater assets are in Good condition, while 0.9% are assessed as Fair. A small portion of the roads stormwater assets are in Poor condition (0.3%), while a more notable share, 8.0%, are in Very Poor condition, representing assets at or near the end of their expected service life.



**Figure 1: Roads Stormwater Assets Overall Condition Summary**

**Figure 2** below shows the condition profile of the Region’s stormwater assets by asset category, expressed as a percentage of total replacement value.



**Figure 2: Roads Stormwater Assets Condition Detail**

Overall, Region roads stormwater system performs well with over 90% of assets in Good or Very Good condition. Corrugated steel pipe (CSP) culverts and storm sewers have high share of Very Poor condition. They will require focused renewal and reinvestment in the near term to mitigate risks associated with asset failure.

### C. Environmental Trends – Previous 5 Years (5.2.3)

Not applicable.

### D. Operations, Inspections, Maintenance and Repairs (5.2.4 and 5.2.5)

York Region implemented a range of operations and maintenance (O&M) programs and activities to keep roads stormwater assets in good operating condition and reduce the risk of unexpected failures. Depending on the nature of the work, these activities are conducted by internal Roads Operations staff, external contractors, or a combination of both. **Table 2** provides a summary of the operations and maintenance activities used by York Region.

**Table 2 – Operations and Maintenance Activities for Roads Stormwater Assets**

<b>Asset</b>	<b>O&amp;M Category</b>	<b>Activities</b>	<b>Frequency</b>
Storm Sewers	Inspection	Closed-circuit television (CCTV) inspection	As needed with crawler and pole camera
	Preventive Maintenance	Root control and removal of other sources of blockage	As needed
	Corrective Maintenance	Unplug blocked pipes and outlets Pipes repair: sealing, spot repair and/or relining	As needed
Culverts	Inspection	Detailed inspection of all culverts completed by consultant in 2023-2024	Between 1 to 5 years depending on culvert location and condition
	Preventive Maintenance	Flushing and cleaning Associated debris barriers removal	As needed
	Corrective Maintenance	Culverts repair: joints repair and corroded sections replacement Embankment erosion protection installation	As needed
Ditches	Inspection	Routine patrol inspections	Yearly
	Preventive Maintenance	Cleaning including vegetation, garbage and debris removal	As needed
	Corrective Maintenance	Re-profiling, regrading and erosion protection installation	As needed
Maintenance Holes	Inspection	Detailed inspection	Bi-yearly - north/south roads: year 1, east/west roads: year 2
	Preventive Maintenance	Cleaning	Bi-yearly - north/south roads: year 1, east/west roads: year 2 Inspection and cleaning are completed together
	Corrective Maintenance	Repairs	As needed - as identified in the previous year's inspection and cleaning

Catch Basins	Inspection	Detailed inspection	Bi-yearly - north/south roads: year 1, east/west roads: year 2 Aligned with cleaning of maintenance holes
	Preventive Maintenance	Sumps cleaning and grates maintenance	Bi-yearly - north/south roads: year 1, east/west roads: year 2 Aligned with cleaning of maintenance holes
	Corrective Maintenance	Structure frame and grate repair and replacement	As needed - as identified in the previous year's inspection and cleaning
Oil Grit Separators	Inspection	Detailed annual inspection	Yearly
	Preventive Maintenance	Maintenance and cleaning	As needed - as identified in the previous year's inspection
	Corrective Maintenance	Repairs	As needed - as identified in the previous year's inspection
Super Pipe Storage Facilities	Inspection	Inspection	In planning
	Preventive Maintenance	Flushing and cleaning	In planning
	Corrective Maintenance	Repairs	In planning
Storage Tanks	Inspection	Inspection	In planning
	Preventive Maintenance	Flushing and cleaning	In planning
	Corrective Maintenance	Repairs	In planning
Stormwater Management Ponds	Inspection	Inspection	Yearly - visual inspection completed with ditches inspection Detailed inspection - in planning
	Preventive Maintenance	Vegetation control, debris removal, erosion control	As needed
	Corrective Maintenance	Repairs	As needed

LIDs	Inspection	Inspection	Yearly - visual inspection completed with ditches inspection Comprehensive inspection - in planning
	Preventive Maintenance	Maintenance	As needed
	Corrective Maintenance	Repairs	As needed
Rutherford Stormwater Pumping Station	Inspection	Inspection completed by external contractor: Ontario Clean Water Agency (OCWA)	2-3 times per week
	Preventive Maintenance	Full station maintenance and servicing of parts	As needed
	Corrective Maintenance	Repairs and system improvements	As needed

**Table 3** summarizes maintenance, repairs and renewal works completed on roads stormwater assets to maintain the roads stormwater system in a state of good repair.

**Table 3 – Summary of Maintenance, Repairs and Renewal Works Completed**

Activity	Quantity
Catch Basin and Catch Basin Manhole Inspection	7,092
Catch Basin and Catch Basin Manhole Cleaning	6,744
Catch Basin Repair	499
Maintenance Hole Repair	115
Oil Grit Separator Inspection	330
Oil Grit Separator Cleaning	115
Oil Grit Separator Repair	0
Storm Sewer Cleaning/Flushing	1
Storm Sewer Lining	4
Storm Sewer Replacement	4
Culvert Inspection	0
Culvert Cleaning/Flushing	35
Culvert Lining	17
Culvert Replacement	320
Ditch Maintenance	17.8 km

Street Sweeping (Roads with Curb in Urban Areas Only)	1,066 km
---	----------

## E. Monitoring Equipment (5.2.6)

Not applicable.

## F. Public Inquiries Summary (5.2.7)

York Region receives stormwater related inquiries from residents/customers through Access York contact centre. Received inquiries are forwarded to the Road Operations team under Roads, Traffic and Fleet Branch of Public Works Department. Staff review, assess and investigate the concern and respond to all inquiries based on established service timelines. **Table 4** summarizes the inquires received and resolved within the reporting period.

**Table 4 – Summary of Public Stormwater Related Inquiries**

Inquiry Type	Total
Culverts	85
Ditch Cleaning	40
Maintenance Holes	70
Catch Basins	26
Flooding	27
<b>Total number of Inquires</b>	<b>248</b>

## G. Alterations to the Authorized Roads Stormwater System Summary (5.2.8)

York Region staff review projects that propose construction of stormwater infrastructure as part of roads reconstruction, roads widening, and new intersections construction. These reviews ensure compliance with the Ministry of Environment, Conservation and Parks *Design Criteria for Sanitary Sewers, Storm Sewers and Force mains for Alterations Authorized under an Environmental Compliance Approval*, as well as York Region Road Design Guidelines.

Project review process includes assessing whether proposed works may compromise the quality and reliability of drinking water sources situated within local source protection vulnerable areas. Detailed Significant Drinking Water Threat Assessment for the roads stormwater system alterations is provided in a separate *York Region Significant*

*Drinking Water Threat Assessment Report for Proposed Alterations*, covering the same reporting period and prepared by the Source Water Protection team of York Region Public Works Department.

Road projects are delivered by the York Region Roads Capital Delivery Branch of Public Works Department and by developers. **Table 5** provides summary of Alterations to the Authorized Roads Stormwater System within the reporting period.

**Table 5 – Summary of Alterations to the Authorized Roads Stormwater System**

Project Name	Project Address / Location	Delivered By	File Number	Internal Sign Off Date	Project Description / Assets Altered	Wellhead Protection Area / Intake Protection Zone	Vulnerability Score	Significant Drinking Water Threat
19th Avenue	19th Avenue, Bayview Avenue to Leslie Street	York Region TRN CD	N/A	29-Jan-2025	Storm Sewers, OGSs, Storage Tanks and LIDs	N/A	N/A	No
Highway 11	Highway 11, 450m North of Morning Sideroad to 430m South of Crimson King Way	York Region TRN CD	N/A	25-Apr-2025	Storm Sewers, OGSs and LIDs	N/A	N/A	No
Donald Cousens Parkway LID Growing Media Trench Pilot Project	Donald Cousens Parkway, 220m East of Ninth Line to 75m West of Country Glen Road	York Region TRN CD	N/A	10-Sep-2025	Infiltration Trench (LID Pilot Project)	N/A	N/A	No
Yonge Street	Yonge Street, Davis Drive to 150m North of Green Lane East	York Region TRN CD	N/A	4-Oct-2025	Storm Sewers, OGSs and SWM (Quantity)-UG Storage	WHPA-A, B, C, D	2, 6, 10	No
Yonge Street Revitalization	Yonge Street, 180m South of Mount Albert Road to 250m South of Doane Road	Town of East Gwillimbury / York Region	N/A	26-Nov-2025	Storm Sewers and OGSs	WHPA-D	2	No
Orchid Trail Development Phase 1	Woodbine Avenue, 25m North of Danny Wheeler Boulevard to 80m South of Danny Wheeler Boulevard	Developers	MOE.24.G.0002	21-May-2025	Storm Sewers	N/A	N/A	No
Nicola Blackwood King Industrial Subdivision	King Road, 1100m East of Jane Street to 230m West of Jane Street, and Jane Street, 450m South of King Road to King Road	Developers	MOE.24.K.0003	29-Aug-2025	Storm Sewers and OGS	WHPA-C, D	2, 4, 6	No
8600 Dufferin Street	Langstaff Road, 85m West to Dufferin Street to 130m West of Dufferin Street	Developers	MOE.24.V.0005	14-Feb-2025	Storm Sewers	N/A	N/A	No
Holland Landing Mount Albert Residential Development	Mount Albert Road, 170m West of 2nd Concession to 220m West of 2nd Concession	Developers	MOE.25.E.0001	10-Jun-2025	Storm Sewers	WHPA-B	6	No

## H. Spills Summary (Sec. 5.2.9)

York Region staff receive notice of spills on Regional roads from various internal and external sources and respond with the necessary inspections and mitigation measures. Ten spills were reported and responded to during the reporting period.

## I. System Improvement Actions Summary of Actions Taken and Proposed Improvements (5.2.10)

York Region improves the condition and performance of the roads stormwater system through the delivery of Roads Capital projects, Roads Operations inspection, maintenance and renewal programs, and development related road works. These activities include the replacement, rehabilitation, and capacity improvement of roads stormwater assets.

In addition, York Region Transportation Stormwater Asset Management team has advanced roads stormwater asset management practices through the development of *York Region Stormwater Asset Management Plan* and the completion of detailed inspections of all culverts between 2023 and 2024. The outcomes of these works have been used to establish actions to improve planning for roads stormwater assets inspection, operation and maintenance, rehabilitation and replacement. **Table 6** summarizes the actions taken and proposed to improve the performance of the roads stormwater system.

**Table 6 – Summary of Actions Taken and Proposed to Improve Performance of Roads Stormwater System**

York Region Team	Actions Taken and Proposed	Timeline
Roads Capital Delivery	Storm sewers, stormwater management facilities, culverts and ditches construction and/or renewal through various growth related major road projects, intersections reconstruction projects and pavement rehabilitation projects	Ongoing
Development Engineering	Storm sewers, stormwater management facilities, culverts and ditches construction and/or renewal through various development related road projects	Ongoing

Roads Operations	Culverts, ditches and storm sewers replacement and rehabilitation through Drainage System Program	Ongoing
Roads Operations	Reinstate in-house culvert inspection program to maintain up-to-date culvert condition data and align assessments with standardized inspection cycles	In planning
Transportation Stormwater Asset Management	Culverts, ditches and storm sewers replacement and rehabilitation through Drainage System Asset Renewal Program	Ongoing
Transportation Stormwater Asset Management and Asset Management Data Analytics	Update GIS data to eliminate known inventory gap particularly for roads stormwater assets constructed by developers	Ongoing
Transportation Stormwater Asset Management	Prepare comprehensive Operations and Maintenance (O&M) Manual for all roads stormwater assets	Initiated
Transportation Stormwater Asset Management	Install signage for stormwater management ponds	In planning
Transportation Stormwater Asset Management	Develop closed-circuit television (CCTV) inspection program to collect storm sewer condition data and align assessments with standardized inspection cycles	In planning

## J. Status of Previously Reported Actions (Sec. 5.2.11)

Not applicable for initial report.