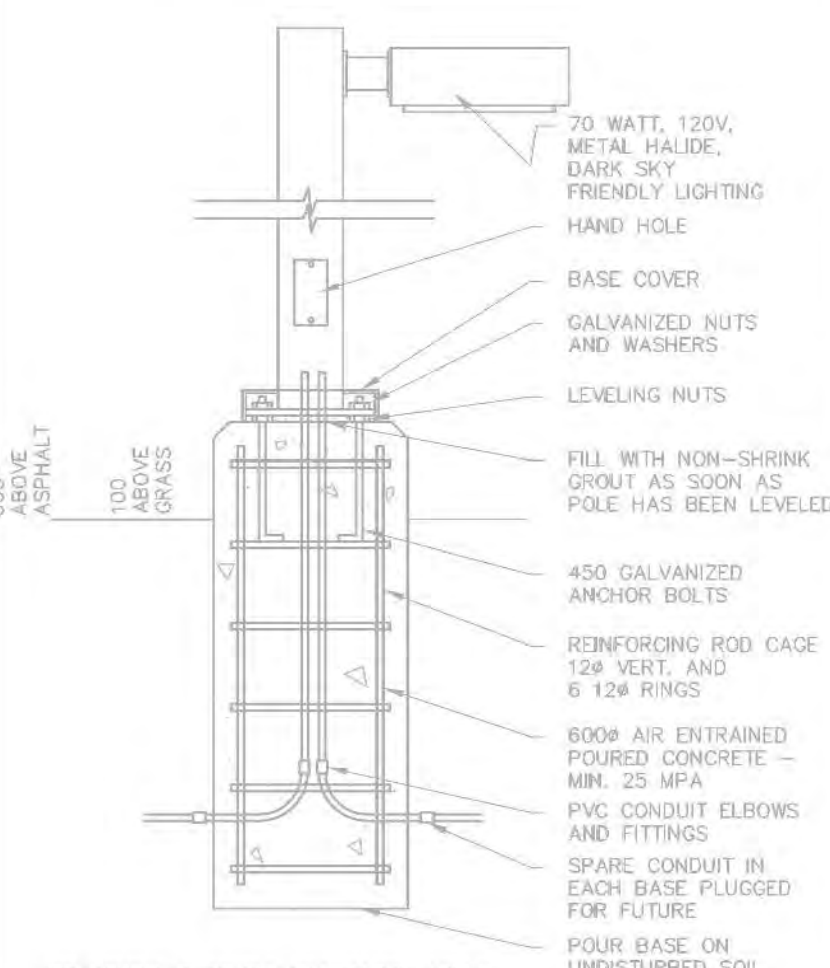


# Appendix A. Conceptual Design Drawings for Water Servicing

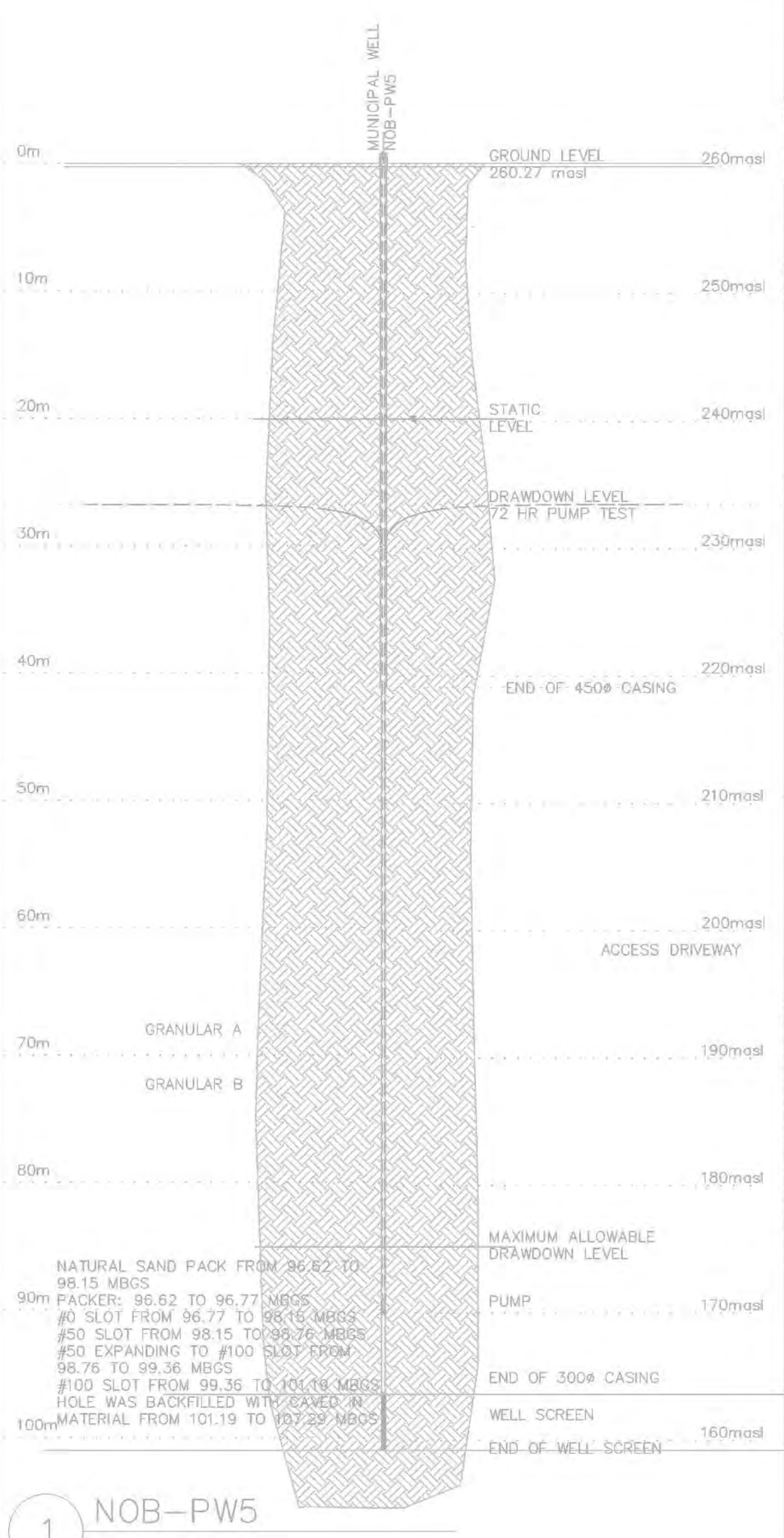


- (A) VALVE CHAMBER # 1  
3.0m X 2.4 m PRE-CAST VALVE CHAMBER  
SEE DWG SP6 FOR DETAILS
- (B) VALVE CHAMBER # 2  
1.8m X 2.4 m PRE-CAST VALVE  
CHAMBER SEE DWG SP6 FOR DETAILS
- (C) PROP. SAN. MH903B  
1800# SAN.MH  
N.I.V. 258.63  
E.I.V. 258.23

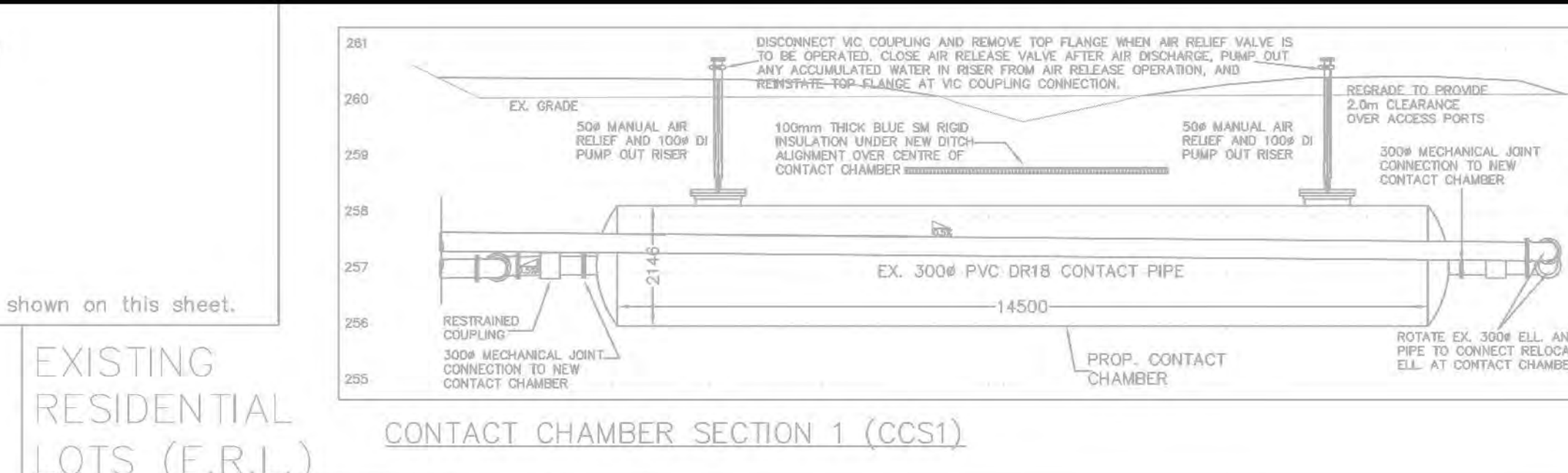
TRCA does not require a timing window for the works shown on this sheet.



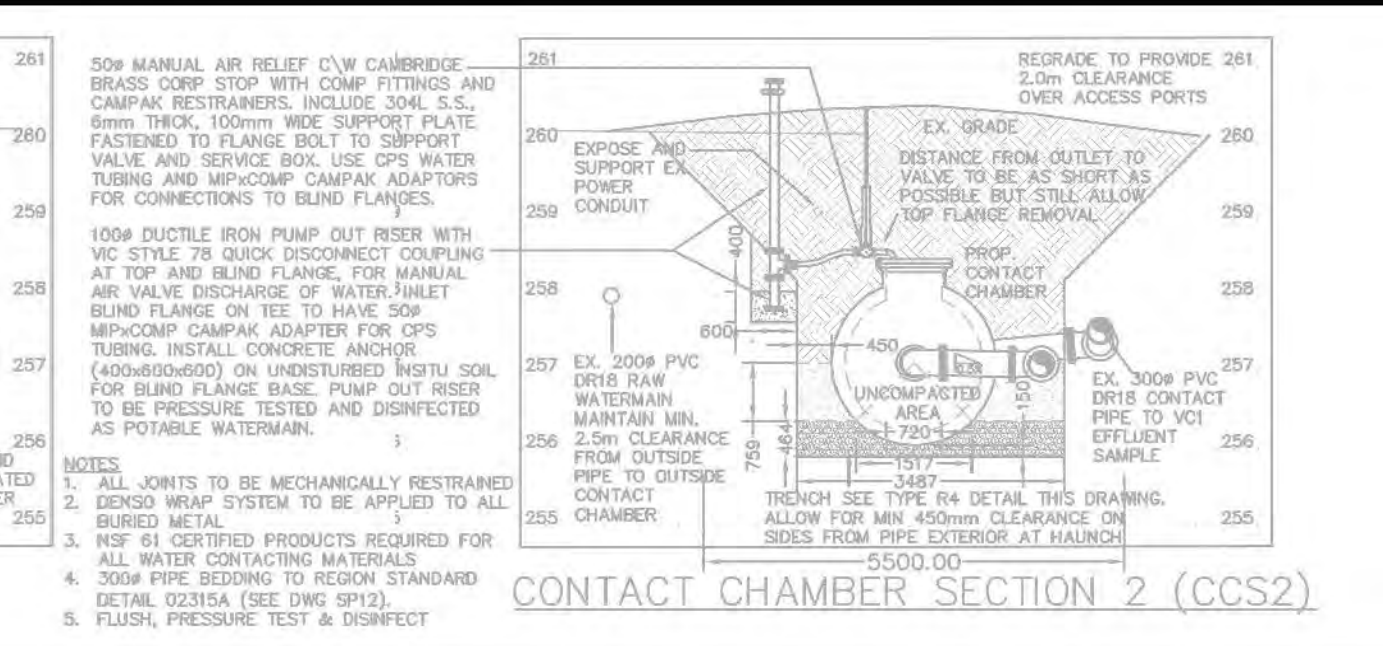
LIGHT FIXTURE POLE BASE E-15



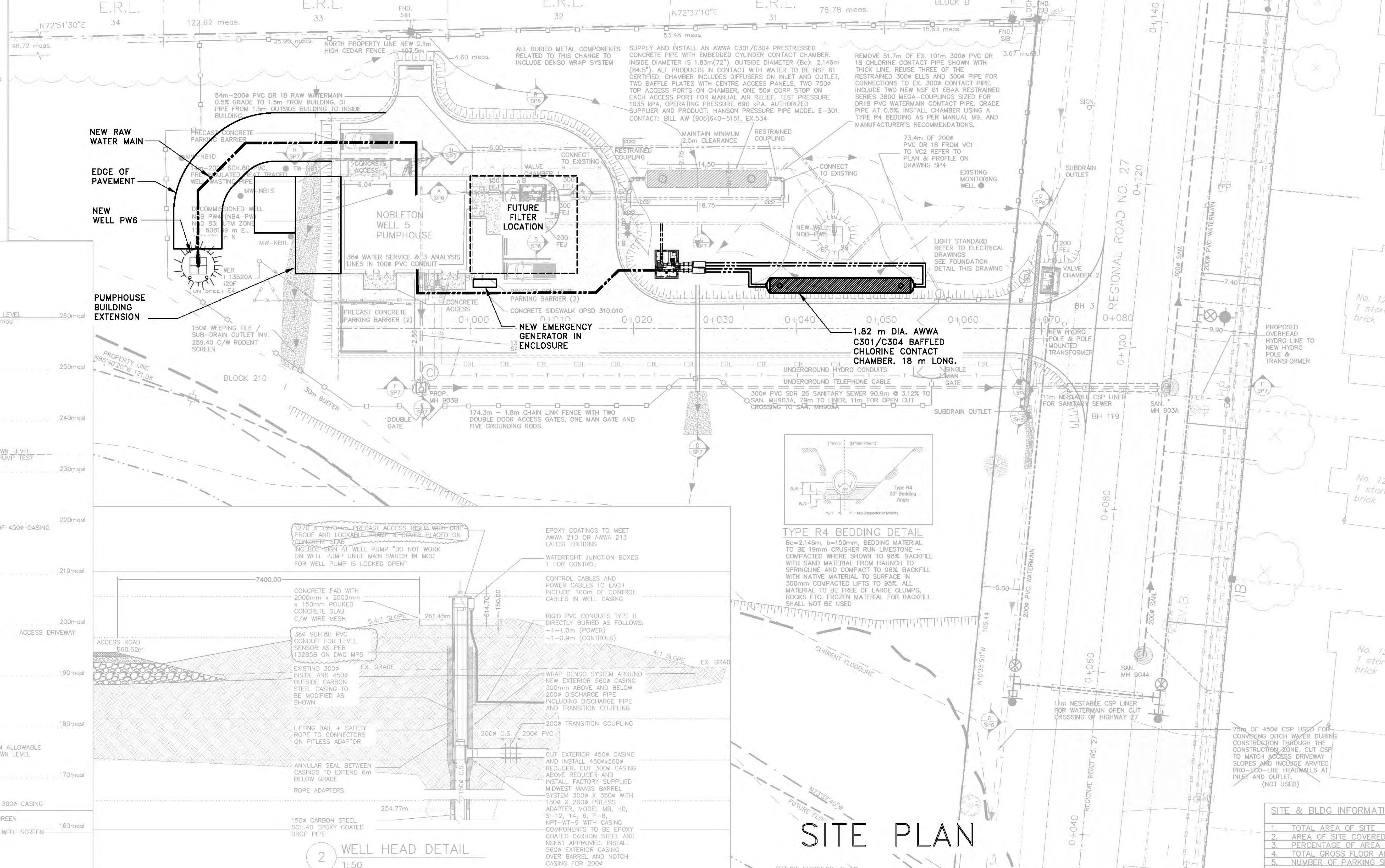
1 NOB-PW5  
1:400



CONTACT CHAMBER SECTION 1 (CCS1)



CONTACT CHAMBER SECTION 2 (CCS2)



2 WELL HEAD DETAIL  
1:50

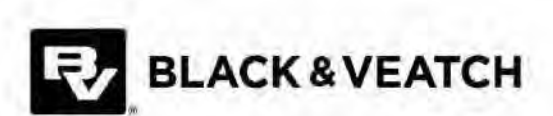
# SITE PLAN

SITE & BLDG INFORMATION

- TOTAL AREA OF SITE
- AREA OF SITE COVERED
- PERCENTAGE OF AREA COVERED
- TOTAL GROSS FLOOR AREA
- NUMBER OF PARKING SPACES

ALL DIMENSIONS AND INFORMATION SHALL BE CHECKED AND VERIFIED ON THE JOB AND ANY DISCREPANCIES MUST BE REPORTED TO THE CONSULTANT BEFORE COMMENCING THE WORK. DRAWINGS ARE NOT TO BE SCALE.

THIS DRAWING AND ALL ASPECTS OF ITS CONTENT ARE PROTECTED BY COPYRIGHT. REPRODUCTION IN WHOLE OR IN PART, BY ANY MEANS WHATSOEVER, WITHOUT THE EXPRESS WRITTEN PERMISSION OF THE CONSULTANT, IS PROHIBITED BY LAW.

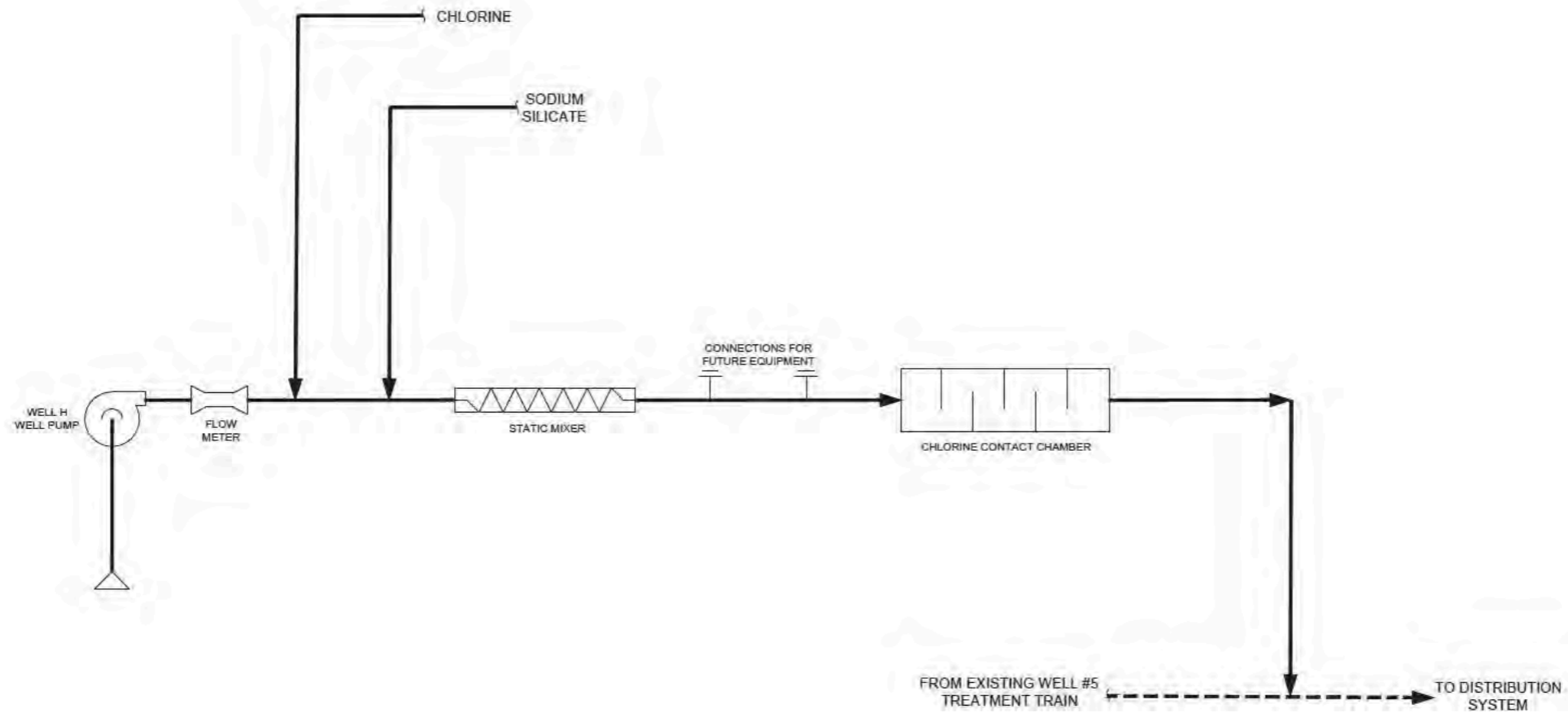


No.	DATE	ISSUES/REVISIONS	BY
1	18/06/21	TM4-CONCEPTUAL DESIGN	DM

DRAWN BY:	CHECKED BY:	NOBLETON SEWAGE WORKS PROJECT WATER POLLUTION CONTROL PLANT	DWG. NO. SP2
DESIGNED BY:	APPROVED BY:		
SCALE:	DATE: JUNE 2021		

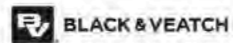
GENERAL  
WELL NO.5 AND TOWNSHIP OF KING  
SANITARY SEWER AND WATER MAIN SITE PLAN





ALL DIMENSIONS AND INFORMATION SHALL BE CHECKED AND VERIFIED ON THE JOB AND ANY DISCREPANCIES MUST BE REPORTED TO THE CONSULTANT BEFORE COMMENCING THE WORK. DRAWINGS ARE NOT TO BE SCALED.

THIS DRAWING AND ALL ASPECTS OF ITS CONTENT ARE PROTECTED BY COPYRIGHT. REPRODUCTION IN WHOLE OR IN PART, BY ANY MEANS, ELECTRONIC, MECHANICAL, OR OTHERWISE, WITHOUT THE EXPRESS WRITTEN PERMISSION OF TST&H GMBH (HUBS) IS PROHIBITED BY LAW.



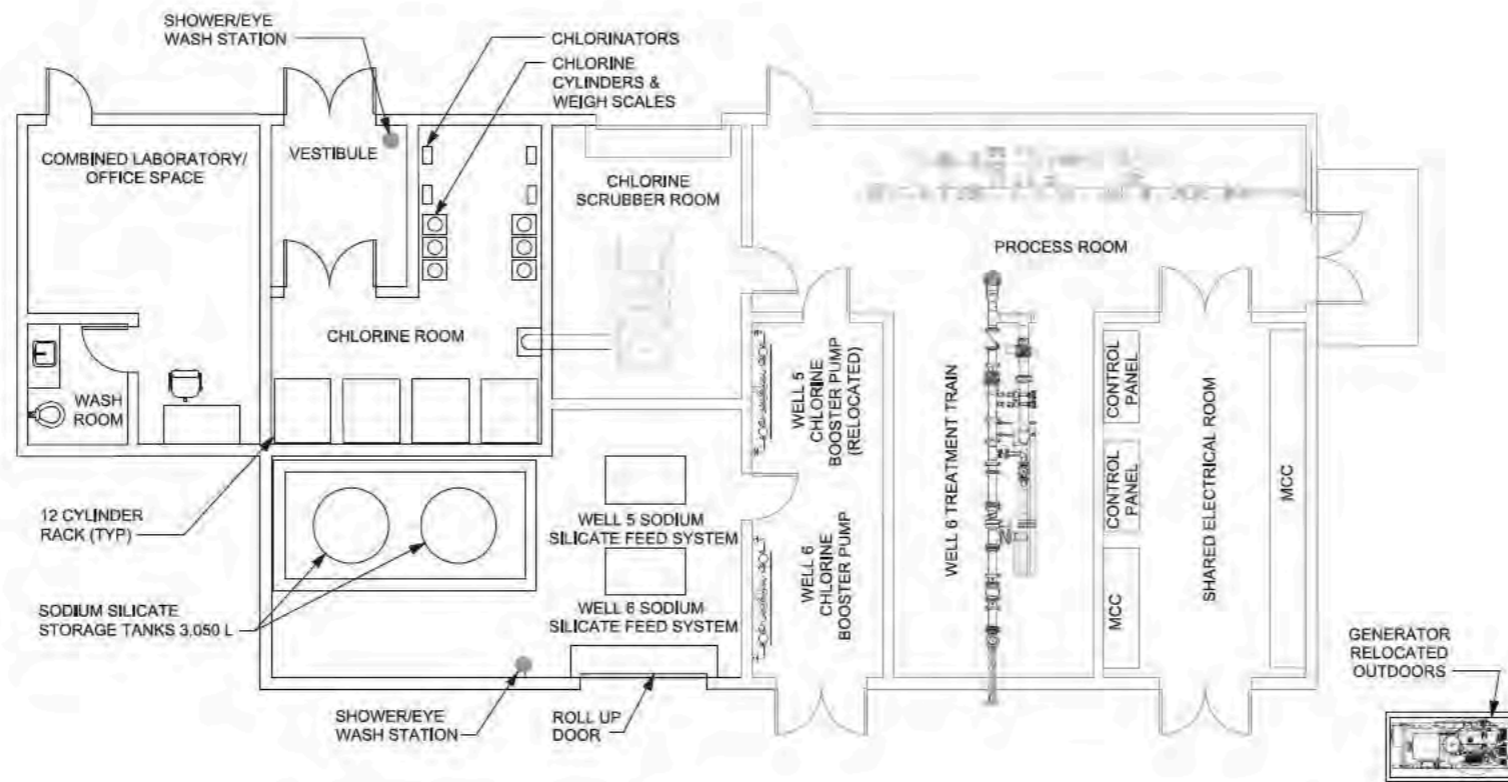
No.	DATE	ISSUES/REVISIONS	BY
1	18/06/21	TW4-CONCEPTUAL DESIGN	RS

DRAWN BY:	CHECKED BY:
DESIGNED BY:	APPROVED BY:
SCALE: 1:50	DATE: JUNE 2021

NOBLETON SEWAGE WORKS PROJECT  
WATER POLLUTION CONTROL PLANT

PROCESS  
PROCESS FLOW DIAGRAM  
NEW WELL H TREATMENT TRAIN

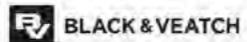
DWG. NO. P101



## EQUIPMENT PLAN

ALL DIMENSIONS AND INFORMATION SHALL BE SHOWN AND VERIFIED FOR THE JOB AND ANY DIMENSIONS MUST BE REPORTED TO THE CLIENT IMMEDIATELY. THE WORK SHOWN IS NOT TO BE SCALED.

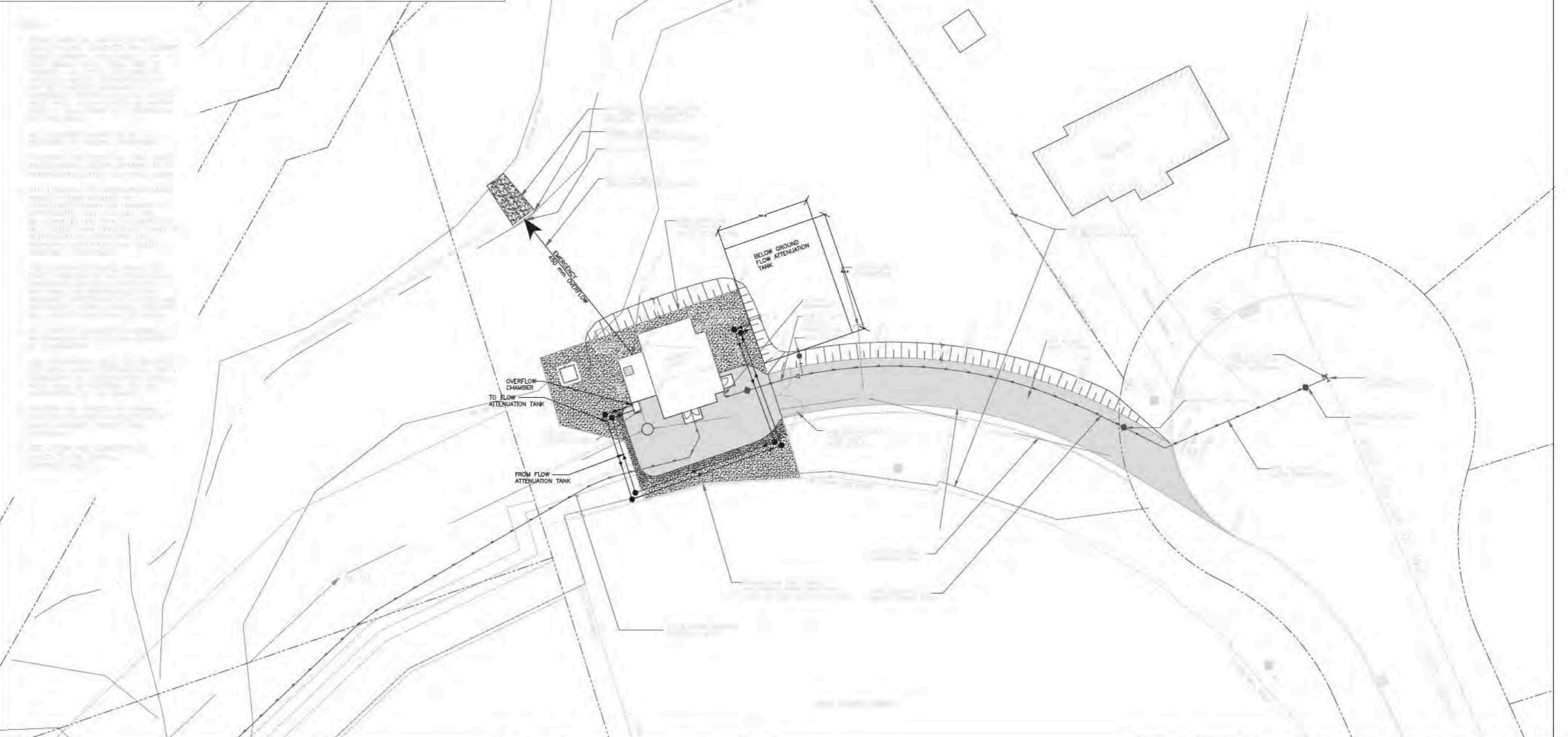
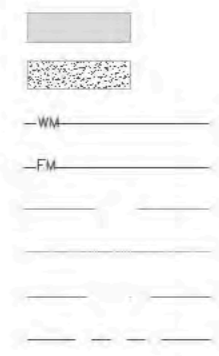
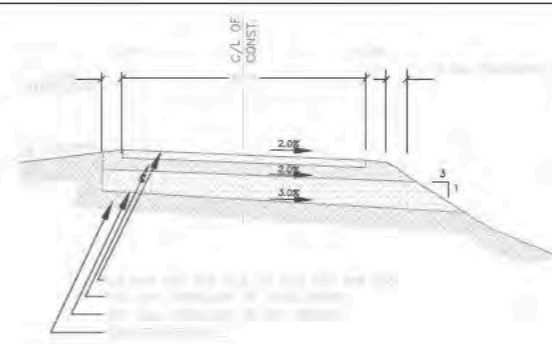
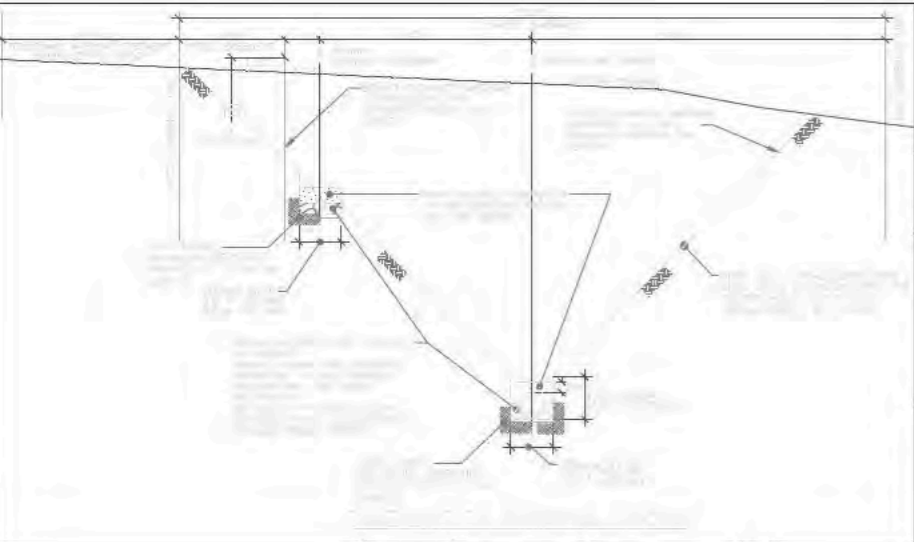
THIS DRAWING AND ALL ASPECTS OF IT IS CONSIDERED TO BE THE PROPERTY OF BLACK & VEATCH AND IS NOT TO BE REPRODUCED OR TRANSMITTED IN ANY FORM OR BY ANY MEANS, WITHOUT THE EXPRESS WRITTEN PERMISSION OF BLACK & VEATCH.



No.	DATE	ISSUES/REVISIONS	BY
1	10/06/21	TW4-CONCEPTUAL DESIGN	DM

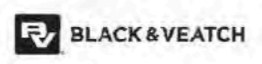
DRAWN BY:	CHECKED BY:	NOBLETON SEWAGE WORKS PROJECT WATER POLLUTION CONTROL PLANT	DWG. NO. EP1
DESIGNED BY:	APPROVED BY:	GENERAL	
SCALE:	DATE: JUNE 2021	WELL NO.5 AND TOWNSHIP OF KING SANITARY SEWER AND WATER EQUIPMENT PLAN	

# Appendix B. Conceptual Design Drawings for Wastewater Servicing



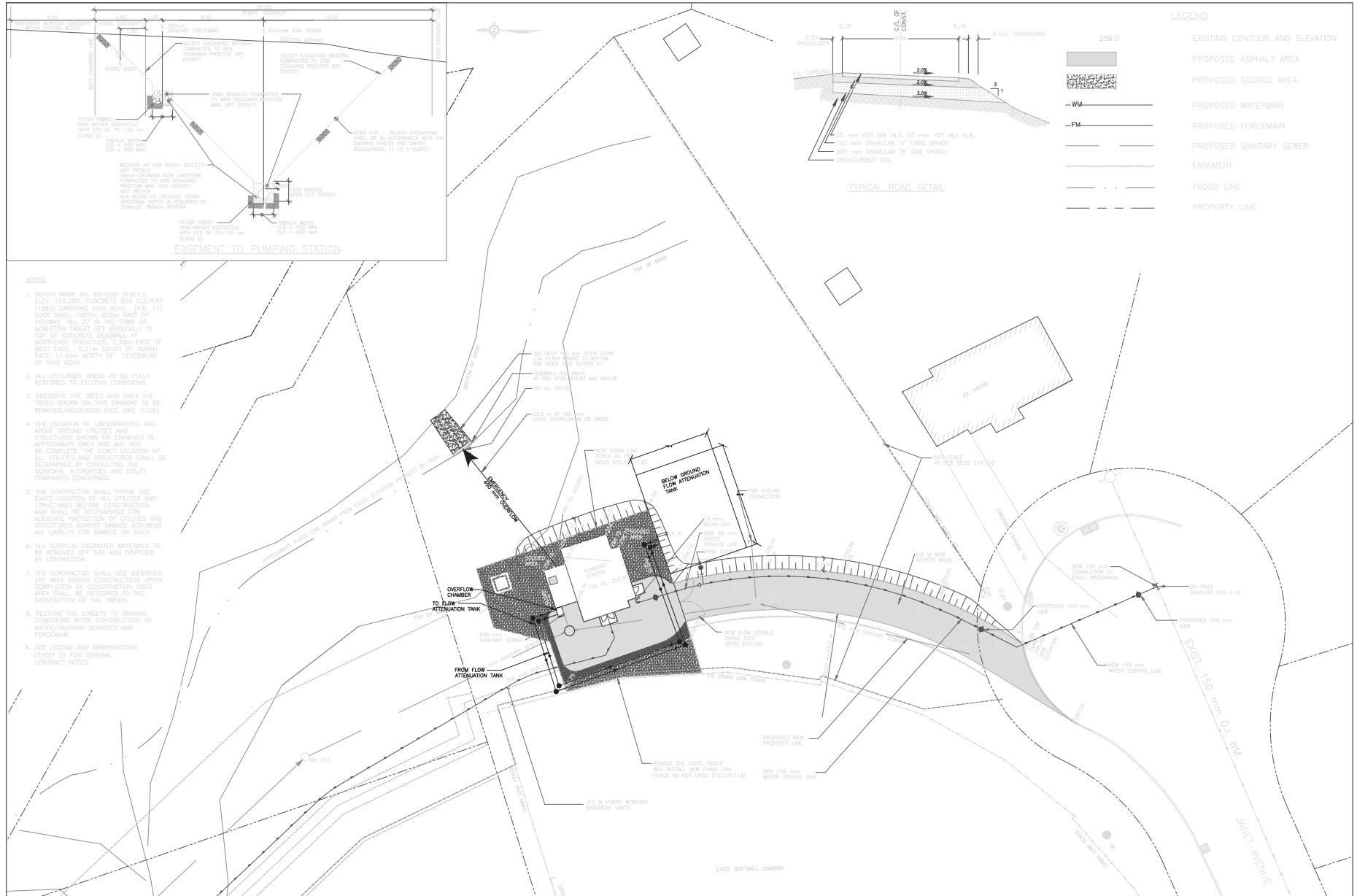
ALL DIMENSIONS AND INFORMATION SHALL BE CHECKED AND VERIFIED ON THE JOB AND ANY DISCREPANCIES MUST BE REPORTED TO THE CONSULTANT BEFORE COMMENCING THE WORK. DRAWINGS ARE NOT TO BE SCALED.

THIS DRAWING AND ALL ASPECTS OF ITS CONTENT ARE PROTECTED BY COPYRIGHT. REPRODUCTION IN WHOLE OR IN PART, BY ANY MEANS WHATSOEVER, WHETHER ELECTRONIC, MECHANICAL OR OTHERWISE, WITHOUT THE EXPRESS WRITTEN PERMISSION OF TOTTENHAM HUBBICK ASSOCIATES, IS PROHIBITED BY LAW.



No.	DATE	ISSUES/REVISIONS	BY
1	18/08/21	TMA-CONCEPTUAL DESIGN	RS

DRAWN BY:	CHECKED BY:	NOBLETON SEWAGE WORKS PROJECT WATER POLLUTION CONTROL PLANT	DWG. NO. G104
DESIGNED BY:	APPROVED BY:		
SCALE: 1:250	DATE: JUNE 2021		
		GENERAL	
		SEWAGE PUMPING STATION	
		SITE PLAN	



- NOTES:**
- BENCH MARK No. 68-200 (R.M.Y.) ELEV. 255.290. CONCRETE BOX CULVERT (1363) CROSSING KING ROAD, (Y.R. 11) OVER SMALL CREEK, 600m EAST OF HIGHWAY 760, 27 IN THE TOWN OF NOBLETON TABLET SET VERTICALLY IN TOP OF CONCRETE HEADWALL AT NORTHEAST STRUCTURE, 0.30m EAST OF WEST FACE, 0.31m SOUTH OF NORTH FACE, 11.60m NORTH OF CENTERLINE OF KING ROAD.
  - ALL DISTURBED AREAS TO BE FULLY RESTORED TO EXISTING CONDITIONS.
  - PRESERVE THE TREES AND ONLY THE TREES SHOWN ON THIS DRAWING TO BE REMOVED/RELOCATED (SEE DWG. 0106).
  - THE LOCATION OF UNDERGROUND AND ABOVE GROUND UTILITIES AND STRUCTURES SHOWN ON DRAWINGS IS APPROXIMATE ONLY AND MAY NOT BE COMPLETE. THE EXACT LOCATION OF ALL UTILITIES AND STRUCTURES SHALL BE DETERMINED BY CONSULTING THE MUNICIPAL AUTHORITIES AND UTILITY COMPANIES CONCERNED.
  - THE CONTRACTOR SHALL PROVE THE EXACT LOCATION OF ALL UTILITIES AND STRUCTURES BEFORE CONSTRUCTION AND SHALL BE RESPONSIBLE FOR ADEQUATE PROTECTION OF UTILITIES AND STRUCTURES AGAINST DAMAGE ASSUMING ALL LIABILITY FOR DAMAGE OR SUCH.
  - ALL SURPLUS EXCAVATED MATERIALS TO BE REMOVED OFF SITE AND DISPOSED BY CONTRACTOR.
  - THE CONTRACTOR SHALL USE IDENTIFIED LOT AREA DURING CONSTRUCTION. UPON COMPLETION OF CONSTRUCTION USED AREA SHALL BE RESTORED TO THE SATISFACTION OF THE OWNER.
  - RESTORE THE STREETS TO ORIGINAL CONDITIONS AFTER CONSTRUCTION OF WATER/SANITARY SERVICES AND FORCEMAIN.
  - SEE LEGEND AND ABBREVIATIONS (SHEET 2) FOR GENERAL CONTRACT NOTES.

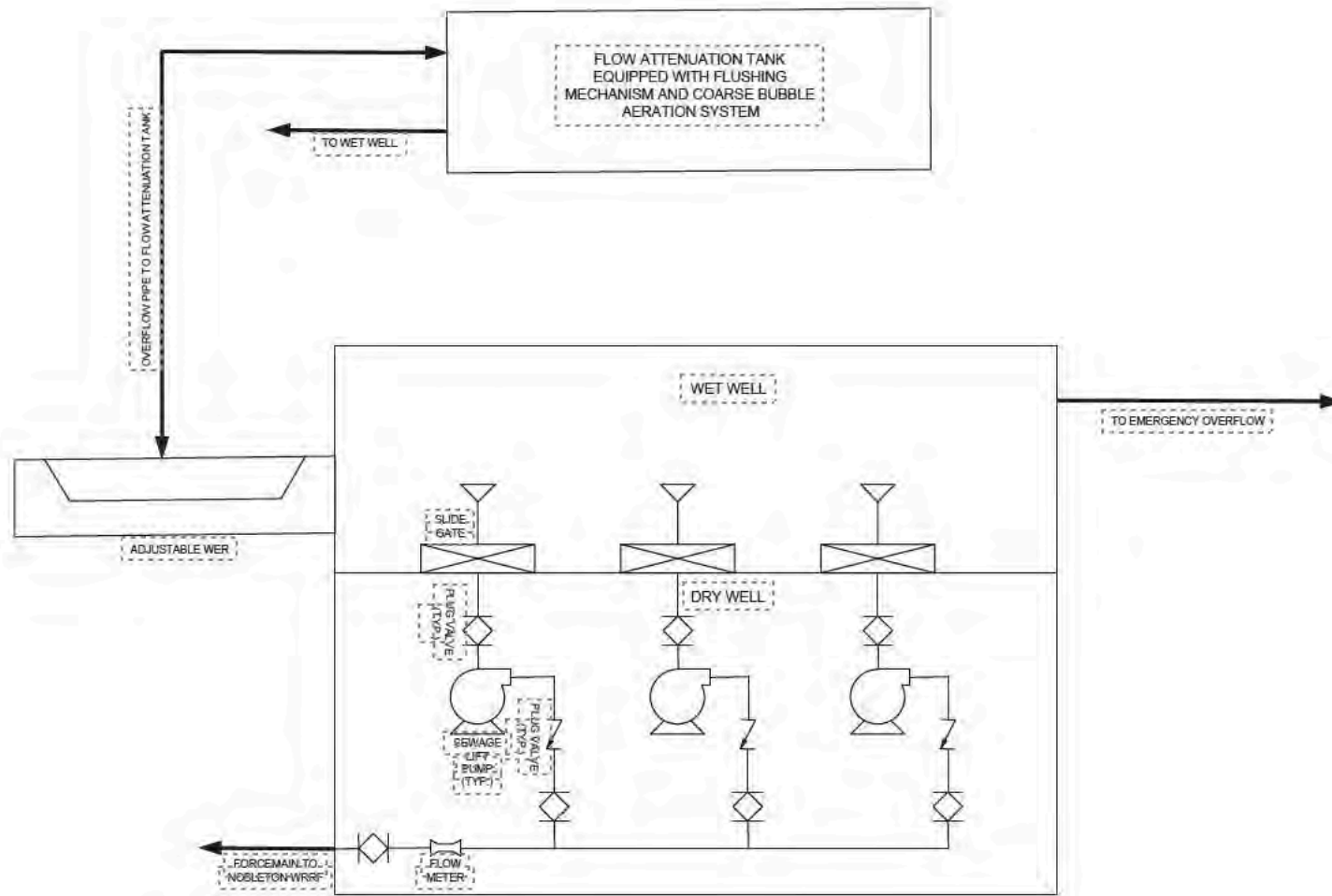
ALL DIMENSIONS AND INFORMATION SHALL BE CHECKED AND VERIFIED ON THE JOB AND THE CONTRACTOR SHALL BE RESPONSIBLE FOR THE ACCURACY OF THE INFORMATION. CONSULT WITH THE ENGINEER BEFORE COMMENCING THE WORK. DIMENSIONS ARE NOT TO SCALE.

THIS DRAWING AND ALL ASPECTS OF ITS CONTENT ARE PROTECTED BY COPYRIGHT. REPRODUCTION IN WHOLE OR IN PART IS STRICTLY PROHIBITED WITHOUT THE WRITTEN PERMISSION OF BLACK & VEATCH. ANY UNAUTHORIZED REPRODUCTION OR DISTRIBUTION OF THIS DRAWING IS PROHIBITED AND WILL BE PROSECUTED TO THE FULL EXTENT OF THE LAW.

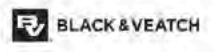


No.	DATE	ISSUES/REVISIONS	BY
1	18/06/21	TMA-CONCEPTUAL DESIGN	RS

<b>DRAWN BY:</b>	<b>CHECKED BY:</b>	<b>NOBLETON SEWAGE WORKS PROJECT WATER POLLUTION CONTROL PLANT</b>	<b>DWG. NO. 6104</b>
<b>DESIGNED BY:</b>	<b>APPROVED BY:</b>		
<b>SCALE:</b> 1:250	<b>DATE:</b> JUNE 2021		
<b>GENERAL SEWAGE PUMPING STATION SITE PLAN</b>			



ALL DIMENSIONS UNLESS OTHERWISE SPECIFIED ARE IN METERS AND DECIMALS THEREOF. THE USER SHALL BE RESPONSIBLE FOR VERIFYING THE ACCURACY OF ALL DIMENSIONS AND SPECIFICATIONS. THE USER SHALL BE RESPONSIBLE FOR OBTAINING ALL NECESSARY PERMITS AND APPROVALS. THE USER SHALL BE RESPONSIBLE FOR OBTAINING ALL NECESSARY PERMITS AND APPROVALS. THE USER SHALL BE RESPONSIBLE FOR OBTAINING ALL NECESSARY PERMITS AND APPROVALS.



No.	DATE	ISSUES/REVISIONS	BY
1	08/06/21	PRELIMINARY DESIGN	EDP

DRAWN BY:	CHECKED BY:
DESIGNED BY:	APPROVED BY:
SCALE:	DATE:
1:50	JUNE 2021

**NOBLETON SEWAGE WORKS PROJECT**  
**WATER POLLUTION CONTROL PLANT**

**PROCESS**

**PROCESS FLOW DIAGRAM**

DWG. NO.  
P101

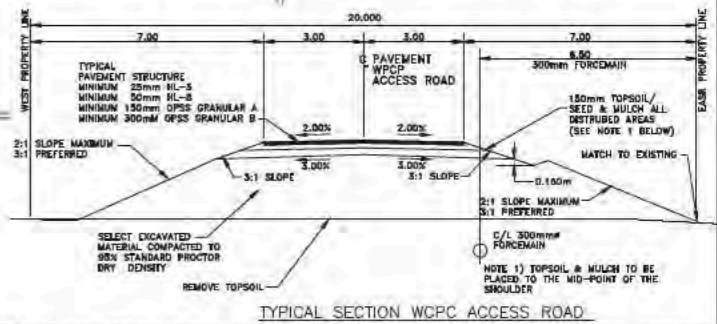
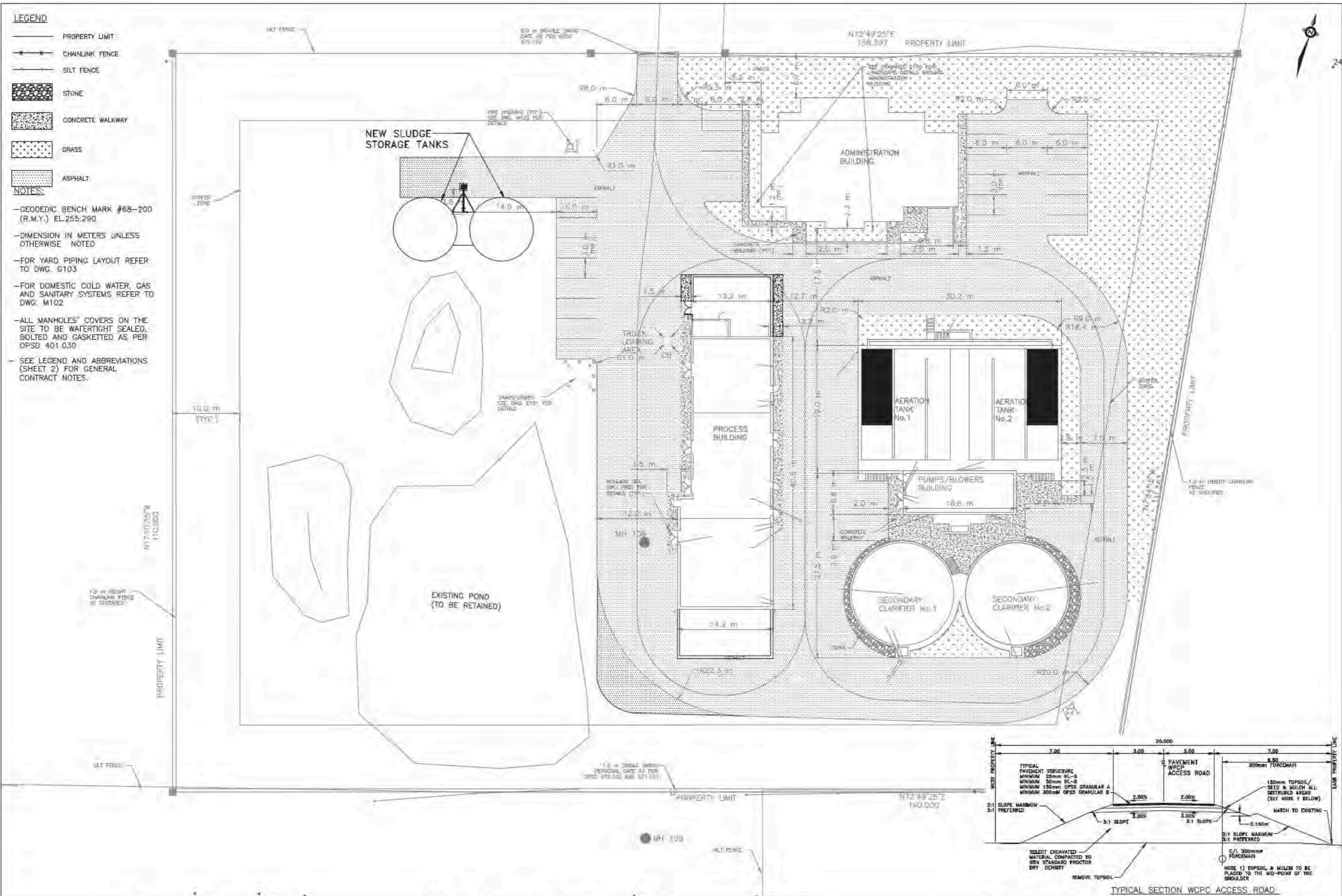


**LEGEND**

- PROPERTY LIMIT
- CHAINLINK FENCE
- SILT FENCE
- STONE
- CONCRETE WALKWAY
- GRASS
- ASPHALT

**NOTES:**

- GEODESIC BENCH MARK #68-200 (R.M.Y.) EL.255.290
- DIMENSION IN METERS UNLESS OTHERWISE NOTED
- FOR YARD PIPING LAYOUT REFER TO DWG. G103
- FOR DOMESTIC COLD WATER, GAS AND SANITARY SYSTEMS REFER TO DWG. M102
- ALL MANHOLES' COVERS ON THE SITE TO BE WATERTIGHT SEALED, BOLTED AND GASKETED AS PER OPD 401.030
- SEE LEGEND AND ABBREVIATIONS (SHEET 2) FOR GENERAL CONTRACT NOTES.

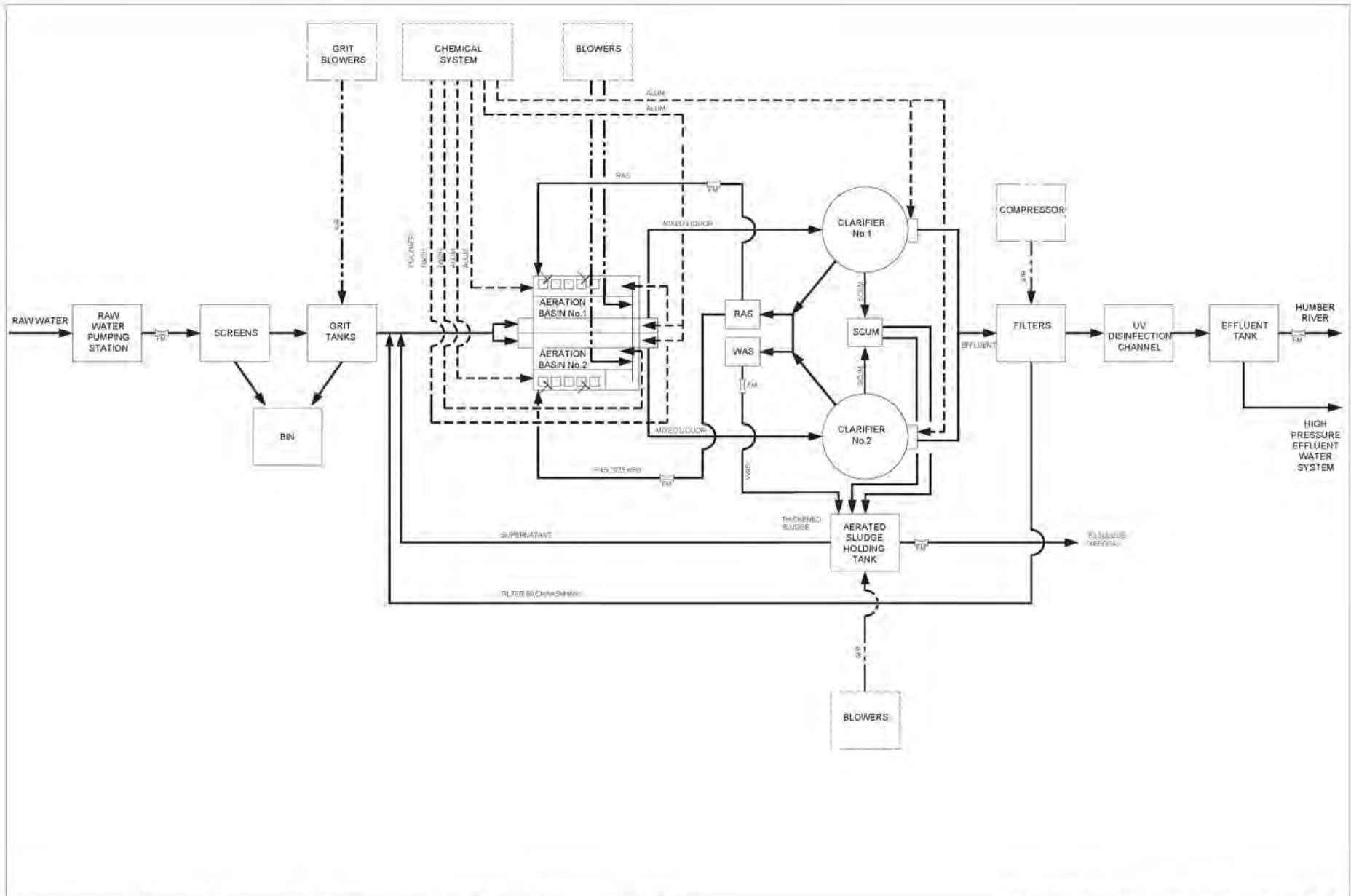


ALL DIMENSIONS AND INFORMATION SHALL BE CHECKED AND VERIFIED ON THE JOB AND ANY DISCREPANCIES MUST BE REPORTED TO THE CONSULTANT BEFORE COMMENCING THE WORK. DRAWINGS ARE NOT TO BE REPRODUCED OR COPIED WITHOUT THE WRITTEN PERMISSION OF TOTTEN & HAINES ASSOCIATES AS PROVIDED BY LAW.

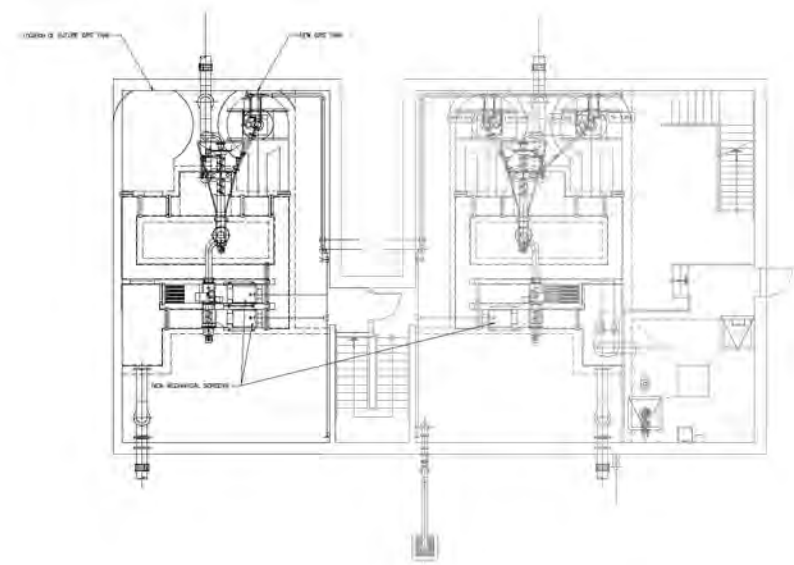


No.	DATE	ISSUES/REVISIONS	BY
1	18/06/21	TMA-CONCEPTUAL DESIGN	AS

DRAWN BY:	CHECKED BY:	NOBLETON SEWAGE WORKS PROJECT WATER POLLUTION CONTROL PLANT	DWG. NO. G101
DESIGNED BY:	APPROVED BY:	GENERAL WATER POLLUTION CONTROL PLANT	
SCALE: 1:50	DATE: JUNE 2021	SITE PLAN	



<small>ALL DIMENSIONS UNLESS OTHERWISE SPECIFIED ARE IN METERS AND DECIMALS THEREOF. ALL DIMENSIONS SHALL BE TO FACE UNLESS OTHERWISE SPECIFIED. THE CONTRACTOR SHALL BE RESPONSIBLE FOR OBTAINING ALL NECESSARY PERMITS AND APPROVALS FROM THE APPROPRIATE AUTHORITIES. THE CONTRACTOR SHALL BE RESPONSIBLE FOR OBTAINING ALL NECESSARY PERMITS AND APPROVALS FROM THE APPROPRIATE AUTHORITIES. THE CONTRACTOR SHALL BE RESPONSIBLE FOR OBTAINING ALL NECESSARY PERMITS AND APPROVALS FROM THE APPROPRIATE AUTHORITIES.</small>		No.	DATE	ISSUES/REVISIONS	BY	DRAWN BY:	CHECKED BY:	NOLETON SEWAGE WORKS PROJECT WATER POLLUTION CONTROL PLANT PROCESS PROCESS FLOW DIAGRAM	DWG. NO. P101
		1	14/08/21	FINAL CONCEPTUAL DESIGN	RS	DESIGNED BY:	APPROVED BY:		
						SCALE:	DATE:		
						1:50	JUNE 2021		



UPPER FLOOR PLAN

ALL INFORMATION CONTAINED HEREIN IS UNCLASSIFIED EXCEPT WHERE SHOWN OTHERWISE. IT IS RELEASED UNDER EXECUTIVE ORDER 13526, WHICH AUTHORIZES RELEASE OF INFORMATION ON THIS DATE UNLESS INDICATED OTHERWISE.

THIS DRAWING AND ALL INFORMATION CONTAINED HEREIN ARE THE PROPERTY OF BLACK & VEATCH. IT IS TO BE USED ONLY FOR THE PROJECT AND SITE SPECIFICALLY IDENTIFIED HEREIN. NO PART OF THIS DRAWING IS TO BE REPRODUCED OR TRANSMITTED IN ANY FORM OR BY ANY MEANS, ELECTRONIC OR MECHANICAL, INCLUDING PHOTOCOPYING, RECORDING, OR BY ANY INFORMATION STORAGE AND RETRIEVAL SYSTEM, WITHOUT THE WRITTEN PERMISSION OF BLACK & VEATCH.



No.	DATE	ISSUES/REVISIONS	BY
1	10/04/21	TM - CONCEPTUAL DESIGN	MS

DRAWN BY:	CHECKED BY:	NOBLETON SEWAGE WORKS PROJECT WATER POLLUTION CONTROL PLANT	DWG. NO. P502
DESIGNED BY:	APPROVED BY:	PROCESS	
SCALE: 1:50	DATE: JUNE 2021	PROCESS BUILDING - INLET WORKS UPPER FLOOR PLAN	





