



Proposed Henderson Sewage Pumping Station

Schedule 'B' Municipal Class Environmental Assessment Study

Open House

Thursday, November 22, 2018 – 6:30 p.m. to 8:30 p.m.

Aurora Town Hall – 100 John West Way, Aurora, ON

Proposed Henderson Sewage Pumping Station - Schedule 'B' Municipal Class EA Study

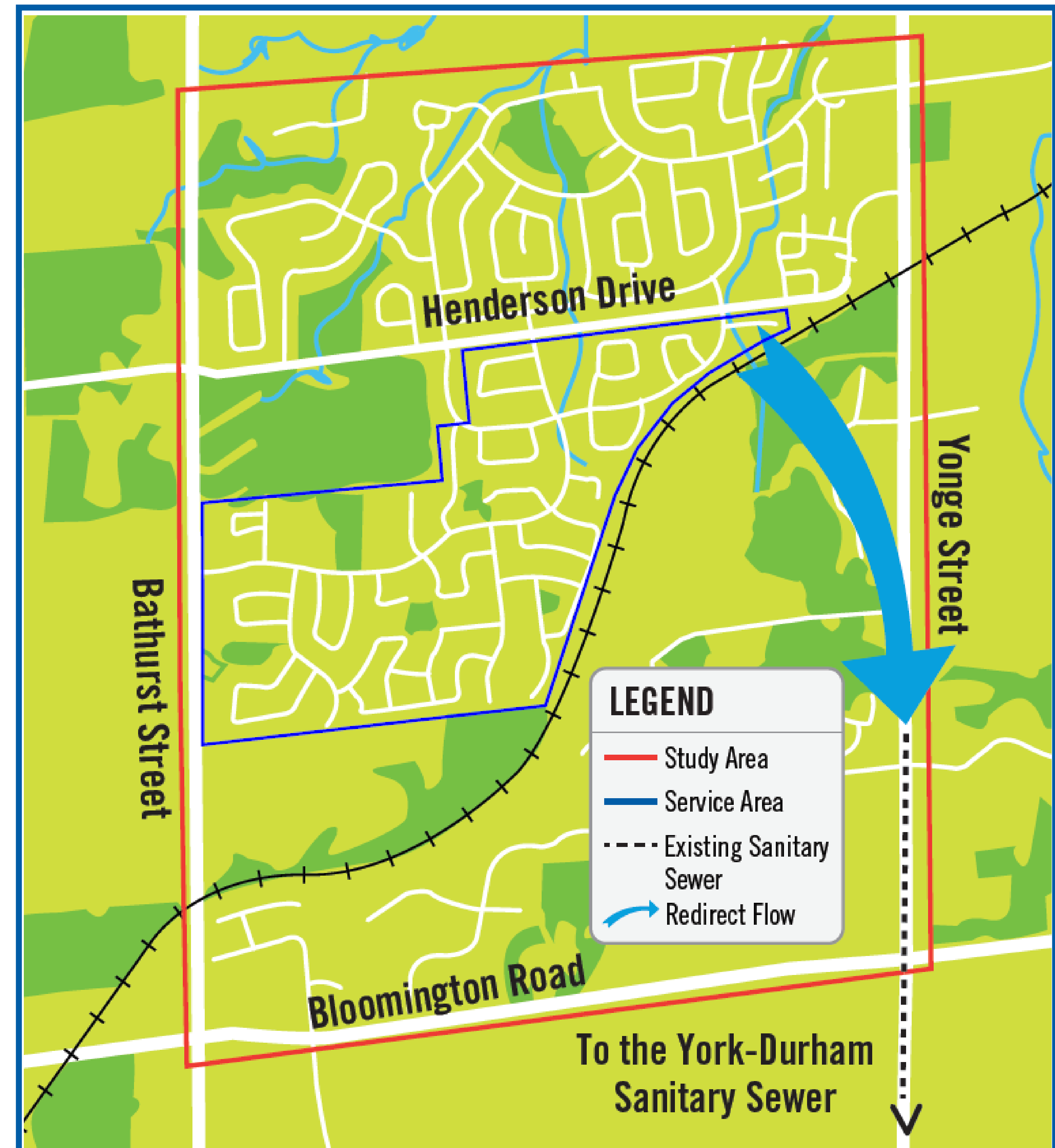
The Study

The Regional Municipality of York is initiating this study to determine the preferred approach to redirecting the wastewater flows from the Henderson Drive area in the Town of Aurora. The ability to redirect wastewater flows from the Henderson Drive area will be essential in maintaining normal operations at the Aurora Sewage Pumping Station (SPS) during high wastewater flows due to extreme weather events. The solution will also help support wastewater servicing for the Town of Aurora.

Purpose of this Open House

The purpose of this Open House is to tell you about the study and the process being followed to identify the problem and present the alternative solutions. A second Open House will be held in the new year to present the recommended solution.

We want to hear from you! Please provide your input using the Post-it notes, stickers and comment sheets provided. Tell us your priorities, and help us confirm our understanding of what really matters to your community.

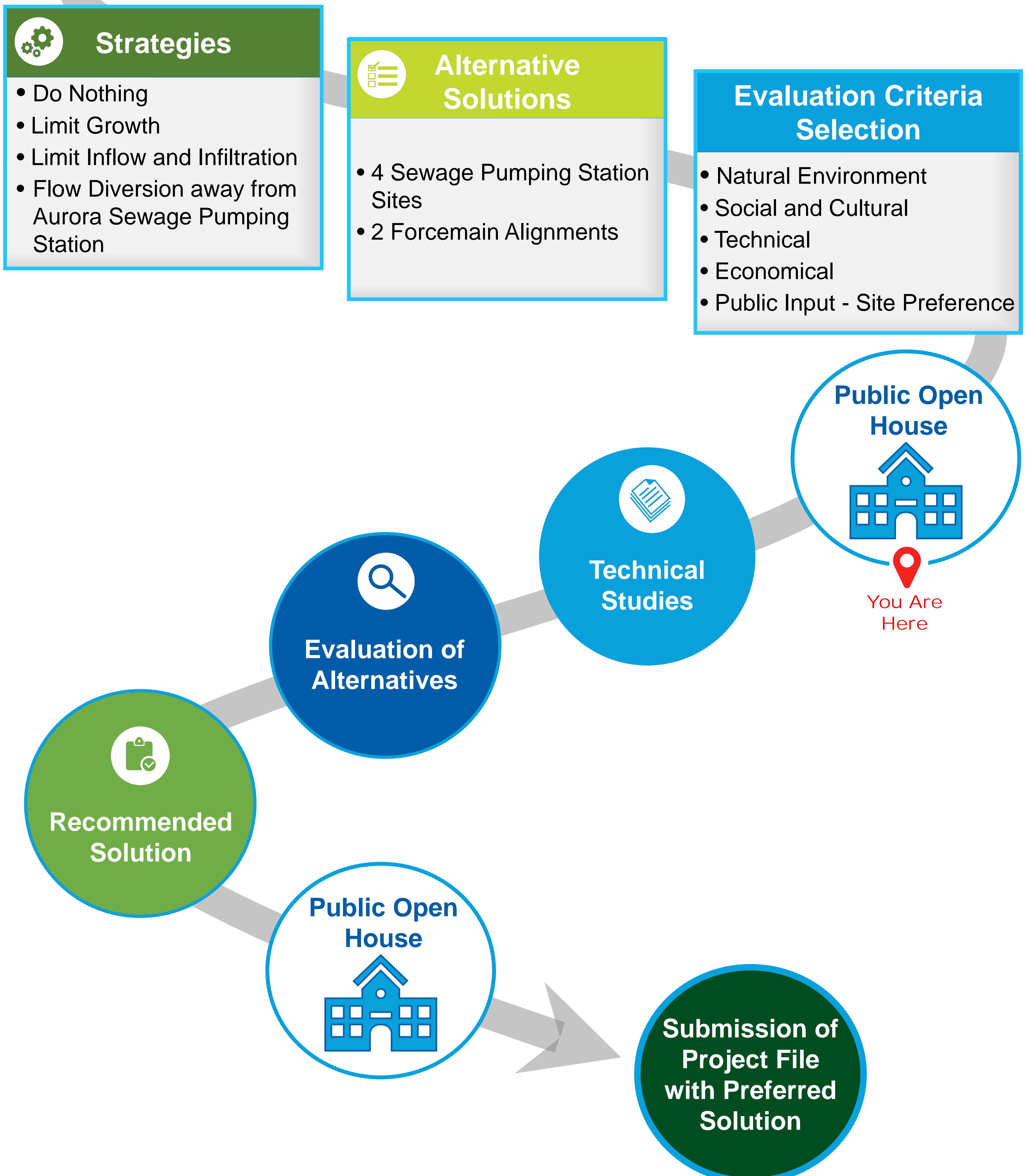


Proposed Henderson Sewage Pumping Station Schedule 'B' Municipal Class EA Study

Problem Solving Process

Problem Statement

To reduce wastewater flows to the Aurora Sewage Pumping Station



Proposed Henderson Sewage Pumping Station

Schedule 'B' Municipal Class EA Study

Strategies

Problem Statement: To reduce wastewater flows to the Aurora Sewage Pumping Station

1. Do Nothing

- Maintaining current infrastructure with no additional upgrades
- This strategy does not address the problem statement and the Aurora Sewage Pumping Station would continue to experience operational issues during high wastewater flows due to extreme weather events



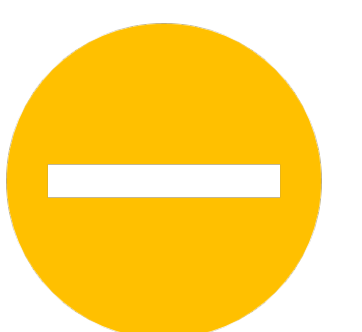
2. Limit Growth

- Limiting community growth to reduce or delay a need for infrastructure upgrades
- This strategy is not feasible given the planned growth for Aurora in the near future



3. Limit Inflow and Infiltration

- Repairing and upgrading existing sewers to reduce the amount of ground and surface water entering the sewer
- While this strategy would result in a modest reduction of operational issues at the Aurora Sewage Pumping Station, it will not sufficiently address the problem statement



4. Flow Diversion away from Aurora Sewage Pumping Station

- Redirecting wastewater flows from the Henderson Drive area away from the Aurora Sewage Pumping Station
- It would require a new sewer, sewage pumping station and forcemain to be constructed
- This strategy effectively addresses the problem statement with a significant reduction of operational issues at the Aurora Sewage Pumping Station during high wastewater flows due to extreme weather events



Proposed Henderson Sewage Pumping Station

Schedule 'B' Municipal Class EA Study

Evaluation Criteria Selection

The following criteria have been selected to evaluate the alternative solutions:

Natural Environment



- Proximity to environmentally sensitive areas
- Impact to watercourse
- Impact to species at risk
- Tree removal
- Potential for contamination

Social & Cultural



- Cultural heritage resources
- Archaeological resources
- Land use compliance
- Proximity to residential neighbourhoods
- Construction impacts
- Visibility from streetscape
- Removal of recreational space

Public Input - Have Your Say



- Site Preference
- * All other public input will be considered in the scoring of the other evaluation criteria

Technical



- Land acquisition process
- Constructability
- Impact to existing utilities
- Permits and approvals

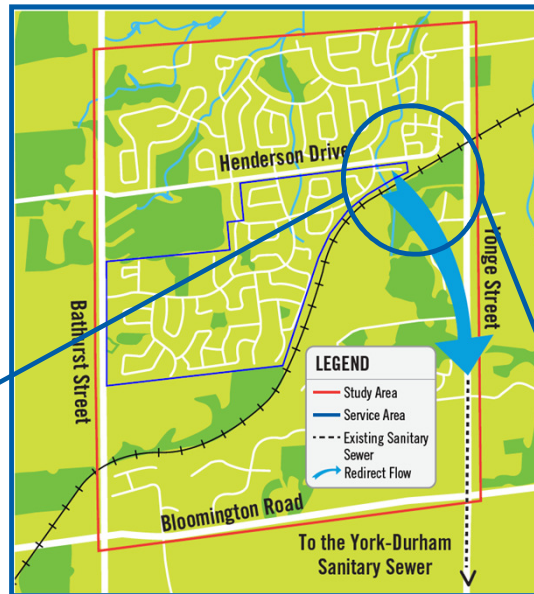
Economic



- Land acquisition cost
- Capital cost
- Life cycle (maintenance) cost

Proposed Henderson Sewage Pumping Station Schedule 'B' Municipal Class EA Study

Location of Alternative Sites for the Proposed Sewage Pumping Station

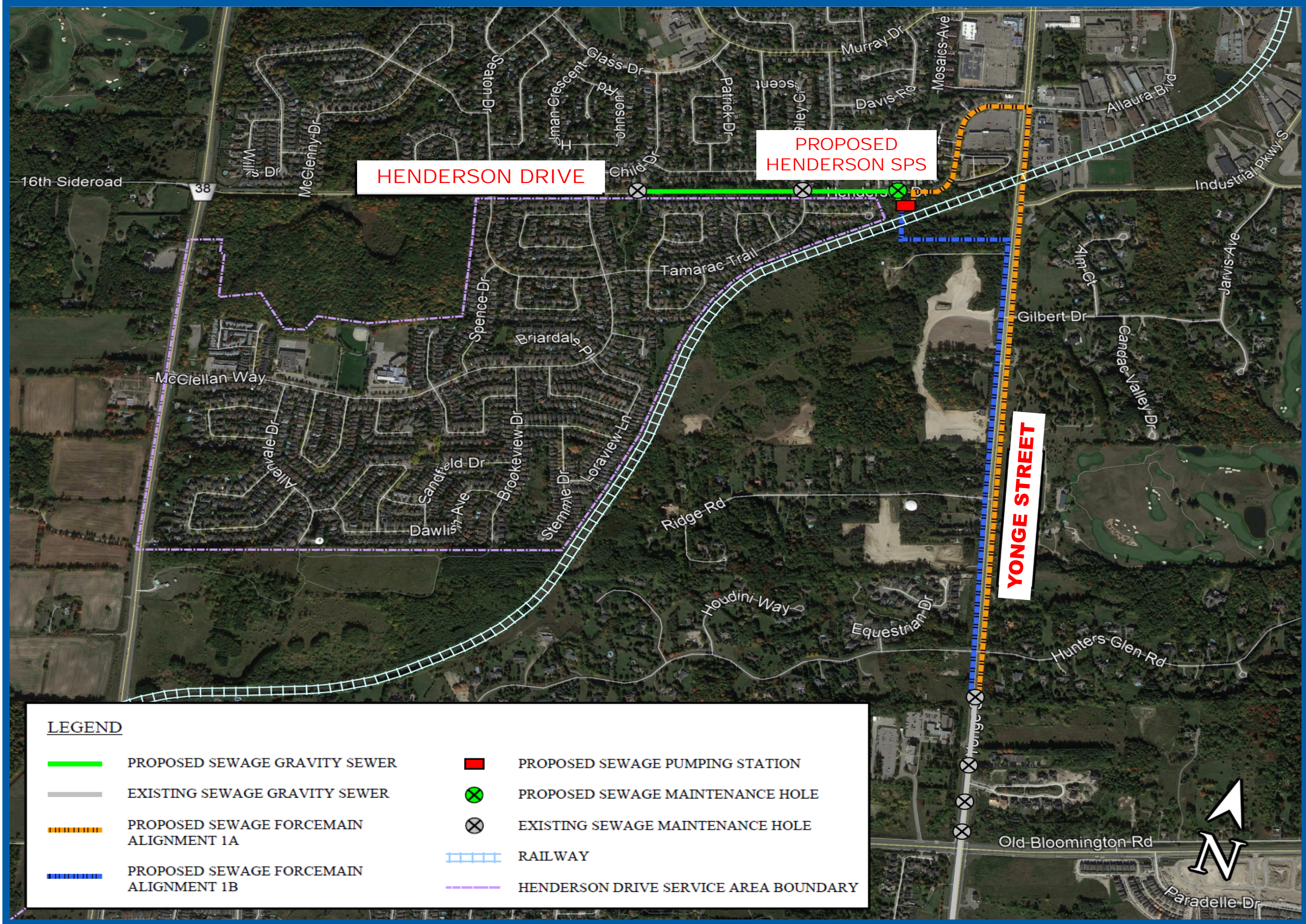


Proposed Henderson Sewage Pumping Station - Schedule 'B' Municipal Class EA Study

Alternative Solutions



Site 1



Alternatives 1A and 1B

ADVANTAGES

- Municipal land owner
- Simple land acquisition process

DISADVANTAGES

- Close proximity to residential neighbourhood
- Sewage Pumping Station would be visible from Henderson Drive
- Vegetated site
- Technical constraints

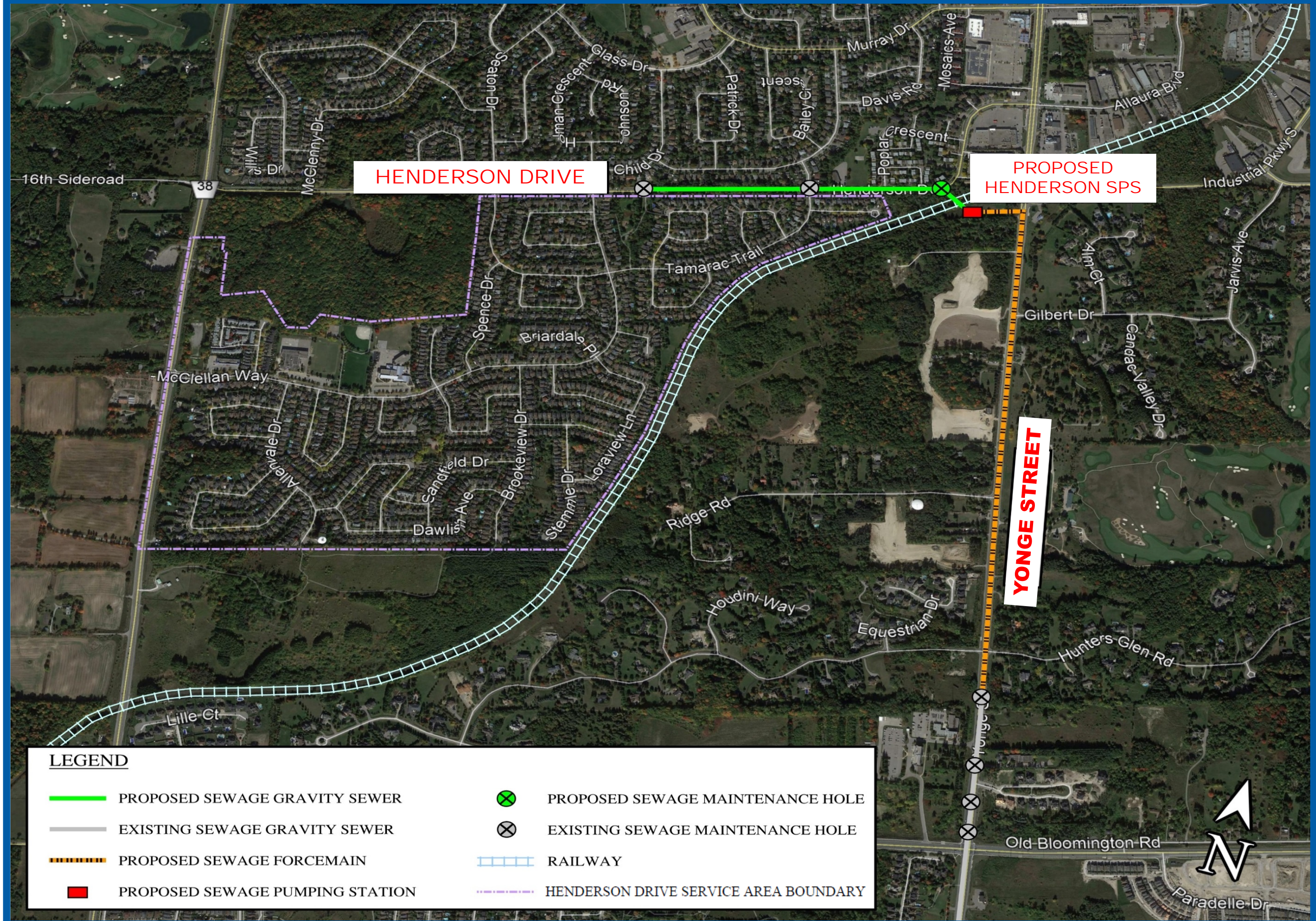


Proposed Henderson Sewage Pumping Station - Schedule 'B' Municipal Class EA Study

Alternative Solutions (cont'd)



Site 2



Alternative 2

ADVANTAGES

- Far from residential neighbourhoods
- Railway corridor separation
- Few technical constraints

DISADVANTAGES

- Woodland lot
- Private land owner
- Site access location

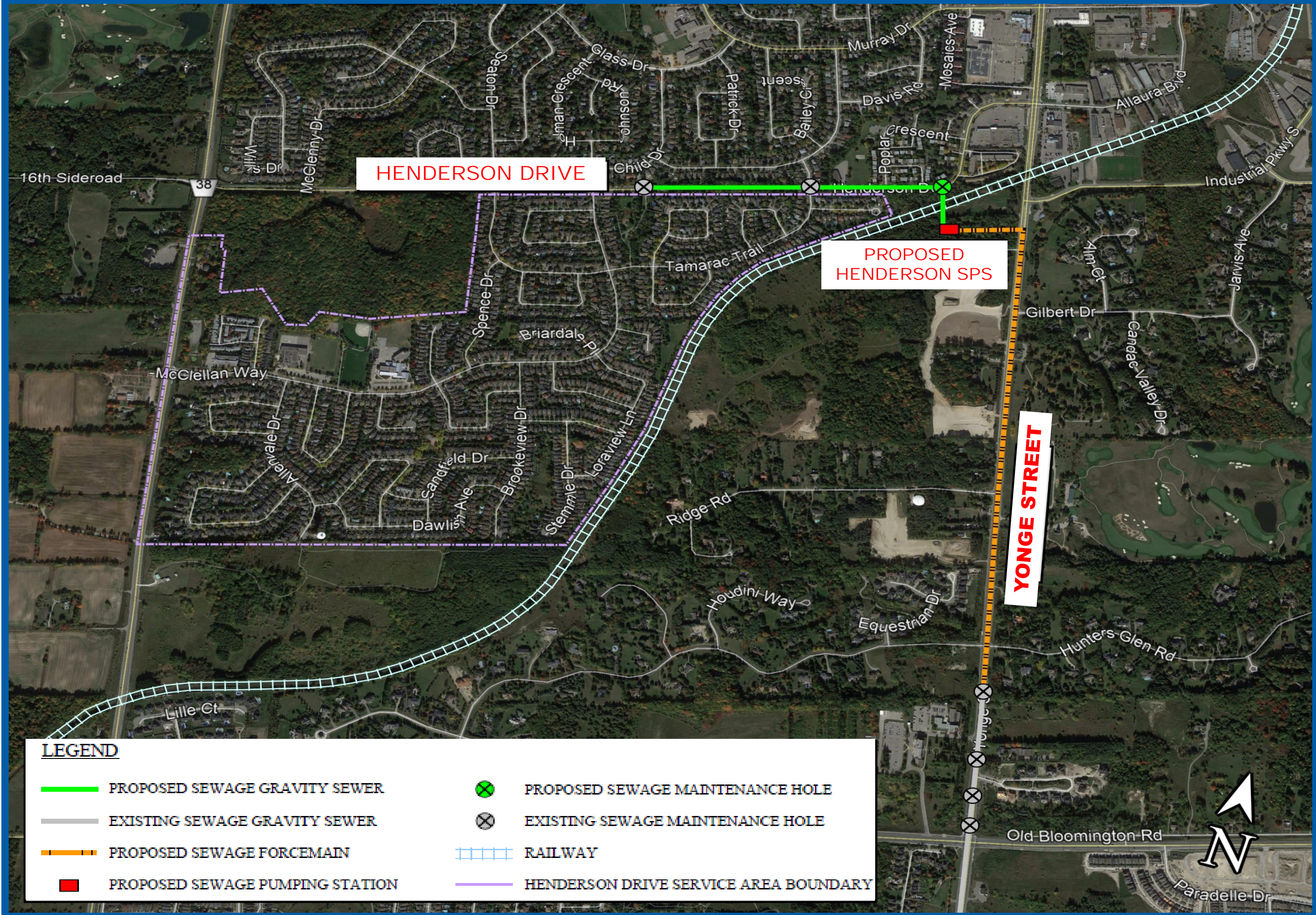


Proposed Henderson Sewage Pumping Station - Schedule 'B' Municipal Class EA Study

Alternative Solutions (cont'd)



Site 3



Alternative 3

ADVANTAGES

- Far from residential neighbourhoods
- Railway corridor separation
- Few technical constraints
- Two open areas suitable for Sewage Pumping Station site
- Potential for Town of Aurora trailhead and public parking lot on site

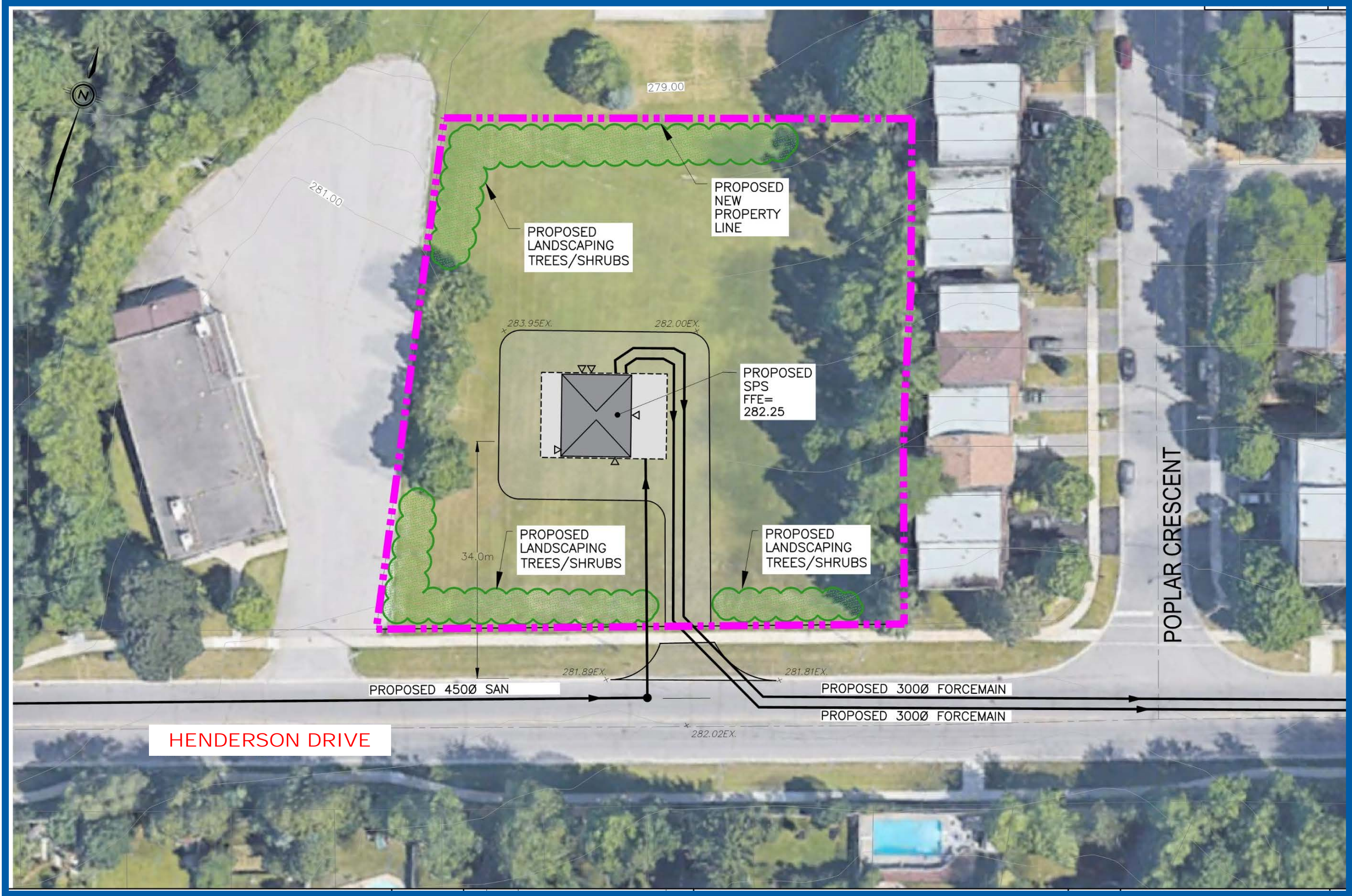
DISADVANTAGES

- Vegetated site
- Private land owner



Proposed Henderson Sewage Pumping Station - Schedule 'B' Municipal Class EA Study

Alternative Solutions (cont'd)



Site 4



Alternatives 4A and 4B

ADVANTAGES

- Few technical constraints
- Land is existing open space

DISADVANTAGES

- Close proximity to residential neighbourhoods
- Sewage Pumping Station would be highly visible from Henderson Drive
- Private land owner



Proposed Henderson Sewage Pumping Station - Schedule 'B' Municipal Class EA Study

Public Input - Have Your Say

Construction Noise	Site Enhancements Tree Planting	Appearance of Sewage Pumping Station	Operation of Sewage Pumping Station – Noise	Sewage Pumping Station Site Preference
				Site 1
Construction Traffic	Site Enhancements Trail System	Visibility of Sewage Pumping Station from Road	Operation of Sewage Pumping Station – Odour	Site 2
				Site 3
Tree Removal due to Construction				Site 4

Using the stickers provided, please indicate what is important to you for the Region to consider addressing as part of this project. If any issues important to you are not listed, please use the Post-It Notes or the Comment Sheets provided.

Proposed Henderson Sewage Pumping Station - Schedule 'B' Municipal Class EA Study

Stay Informed

Stay informed by visiting our project webpage:

york.ca/EA

If you would like to submit your comments directly to the Study Team, please contact:

Claudio Micelli, P. Eng. PMP
Project Manager
Environmental Services
Regional Municipality of York
1-877-464-9675 ext. 75047
Fax: (905) 830-6927
Email: env_HendersonSPS@York.ca

Project Timeline

