

Lake to Lake

CYCLING ROUTE and WALKING TRAIL
FEASIBILITY and DESIGN STUDY

Overview Report | JUNE 2013



Table of Contents

Study background	2	List of maps:	
Study Background	2	Map one: Lake to Lake Preferred Route	5
Study Objectives	2	Map two: Lake to Lake Preferred	
What we learned	3	Route by Phase	7
What we learned	3	Map three: Georgina (north)	8
How the route was selected	3	Map four: Georgina (south)	9
Route appearance	4	Map five: East Gwilimbury	10
What the Lake to Lake route will look like	4	Map six: Newmarket	11
Signing the route	4	Map seven: Aurora	12
Implementing the route	6	Map eight: Richmond Hill	13
Implementing the route	6	Map nine: Markham	14
The investment	6		

Thanks to our consultants on this project:



Study Background

The *York Region Pedestrian and Cycling Master Plan (2008)* proposed the concept of a cycling route and walking trail on and off-road route from Lake Simcoe at the northern edge of the Region of York through the City of Toronto to Lake Ontario in the south.

The Region completed a comprehensive design study that has resulted in the selection of a preferred route alignment as well as a preliminary design and details about how the Lake to Lake Route could be implemented within the Region.

The Lake to Lake Route will be a major recreational and commuter “regional-trail” and is expected to be a major destination and amenity for all York Region and City of Toronto residents and visitors.



Primary Study Area:

The Lake to Lake corridor connects Lake Simcoe to the north with the City of Toronto at the East Don Parklands near Leslie Street and makes use of the City's cycling facilities to Lake Ontario.

Study Objectives:

- Linking routes to transit facilities;
- Providing connections between routes and points of interest throughout the Region; and
- Establishing a recreational cycling route and walking trail to allow people to experience the beautiful, natural and cultural heritage in York Region.



Tom Taylor Trail, Newmarket

What we learned

Over the course of the Lake to Lake Route Study, the public and stakeholders have had numerous opportunities to meet with York Region staff to provide their input. These included a series of public information centres (PICs) and a workshop. The first round of PICs was held at Hillcrest Mall in Richmond Hill and the Aurora Chamber Street Festival. The second round of PICs was held at Holland Landing Community Centre in East Gwillimbury and Oak Ridges Community Centre in Richmond Hill. The third PIC was held at Georgina's Recreational Outdoor Campus (ROC).

In addition, a web based questionnaire was developed and 147 people completed the questionnaire between February 2012 and February 2013.

It was clear from public consultations that there is very strong support for York Region and its local municipal and agency partners to implement the Lake to Lake Route as soon as possible. Results from the online questionnaire confirmed that 98 per cent of York Region residents support developing the Lake to Lake Route.



Stakeholder Workshop



Stakeholder Study Tour



Aurora Street Festival

How the route was selected

Over the course of the Lake to Lake Route Study, Route Selection Criteria were used to inform the development of the Lake to Lake Cycling Route and Walking Trail.

The study team considered the following:

- **Regional goals and objectives and local municipal plans and initiatives** of a Lake to Lake Cycling Route and Walking Trail;
- **User Experience** including features associated with a desirable, connected and logical route; and
- **Safety and Design Feasibility Criteria** including features associated with safety, design feasibility and maintenance.

The following figure illustrates the route selection criteria used to assess alternatives and select the preferred route alignment.

Route Selection Criteria Application Process



What the Lake to Lake Route will look like

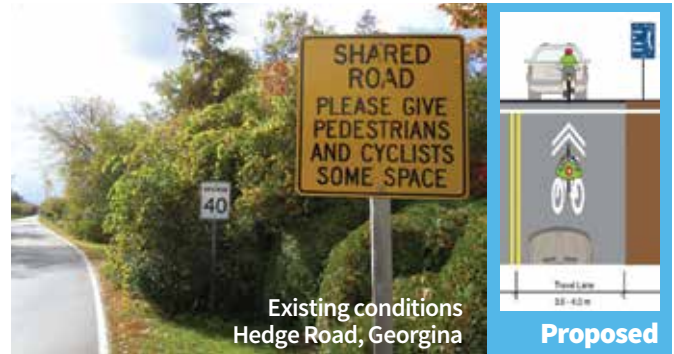
The proposed Lake to Lake Cycling Route and Walking Trail would include multi-use paths adjacent to or in place of sidewalks, multi-use paths through green spaces as well as some signed routes on low volume, low speed roads.

A multi-use path may take the form of a boulevard path along a road right-of-way or an off-road path through parks and open spaces. Multi-use paths are designed to support the widest range of non-motorized users including pedestrians, cyclists, in-line, skaters and skateboarders.

Multi-use Paths



Map one illustrates the preferred Lake to Lake Route by trail type (e.g. on or off-road facilities).



Signing the Route

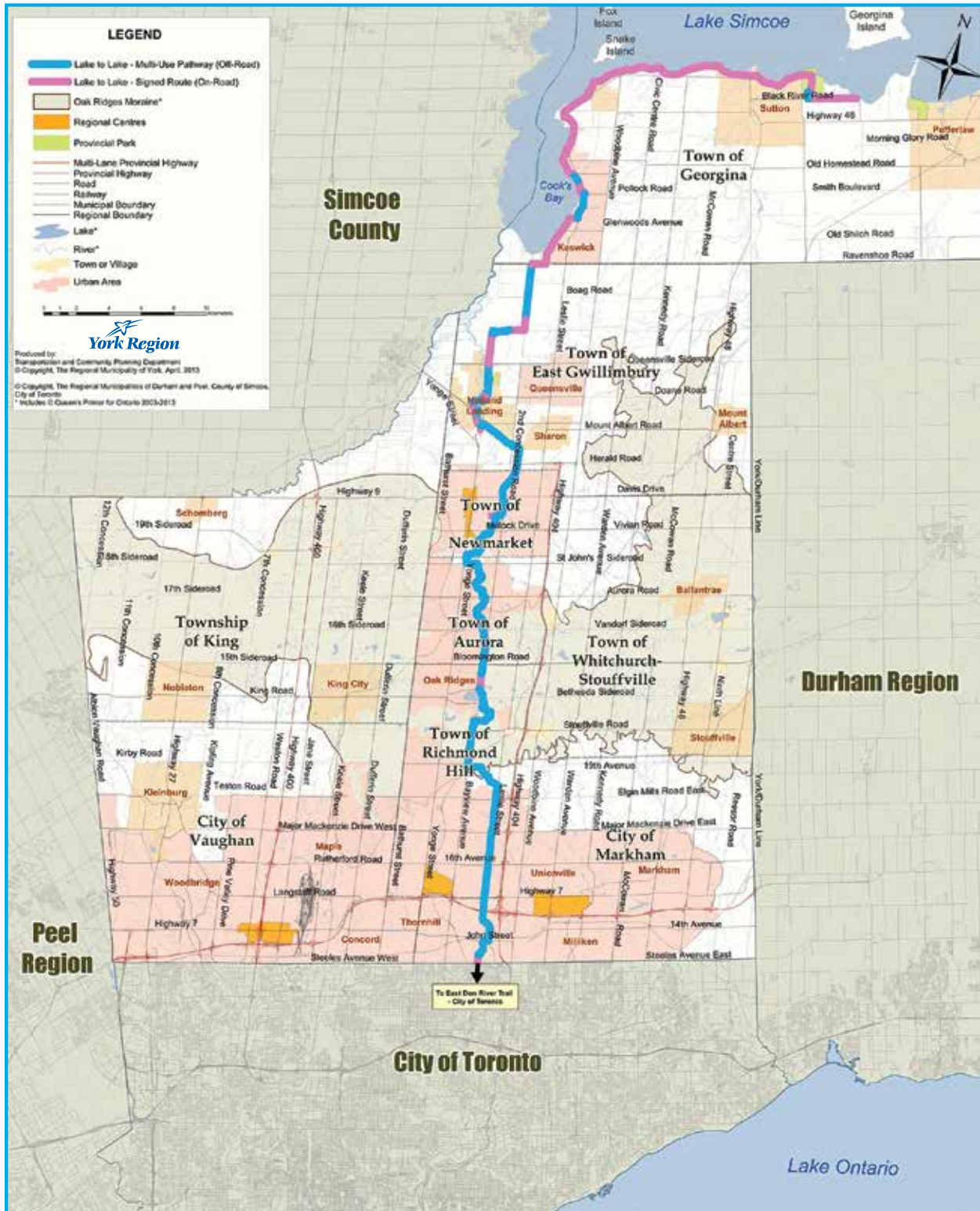
The proposed Lake to Lake Route name effectively conveys the concept of a trail that extends from Lake Simcoe to Lake Ontario. It also can easily be added to existing local municipal named trails that it follows through the addition of small supplementary route marker signs.

Examples of Route Marker and Wayfinding Signs



A signed-only cycling route requires no physical changes to the roadway other than bicycle route signage.

Lake to Lake Cycling Route and Walking Trail - Preferred Route



Implementing the Route

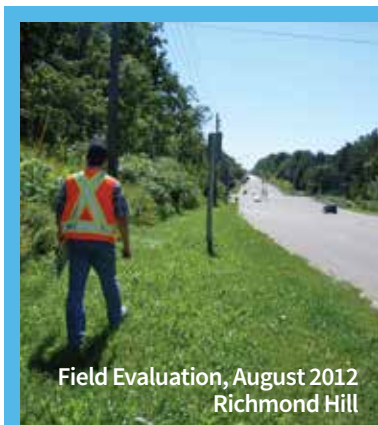
It is recommended that York Region take the lead to coordinate and fund the implementation of the Lake to Lake Cycling Route and Walking Trail. It is proposed that local municipalities and agencies will endorse and support in principle the Lake to Lake Route alignment and proposed facility types.

Once completed each local municipality or agency would own and be expected to maintain their respective segments of the Lake to Lake Route.

The Investment

The total capital investment to design and construct the Lake to Lake Cycling Route and Walking Trail is estimated at \$16 million, plus an estimated \$6 million for detailed design, approvals, tendering and contingencies.

A five year implementation strategy has been developed that includes short and long term priorities. **Map two** illustrates the phasing for the Lake to Lake Route

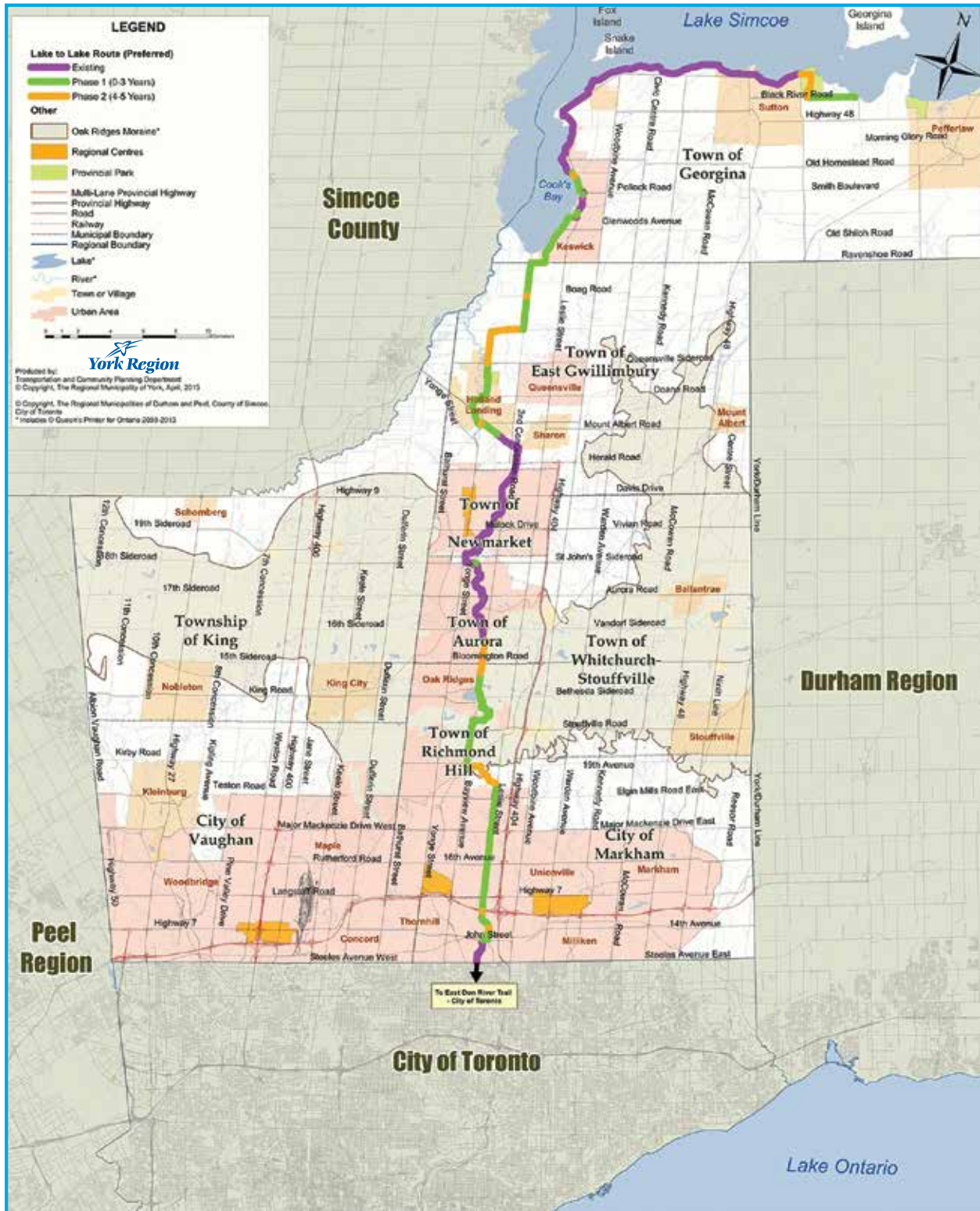


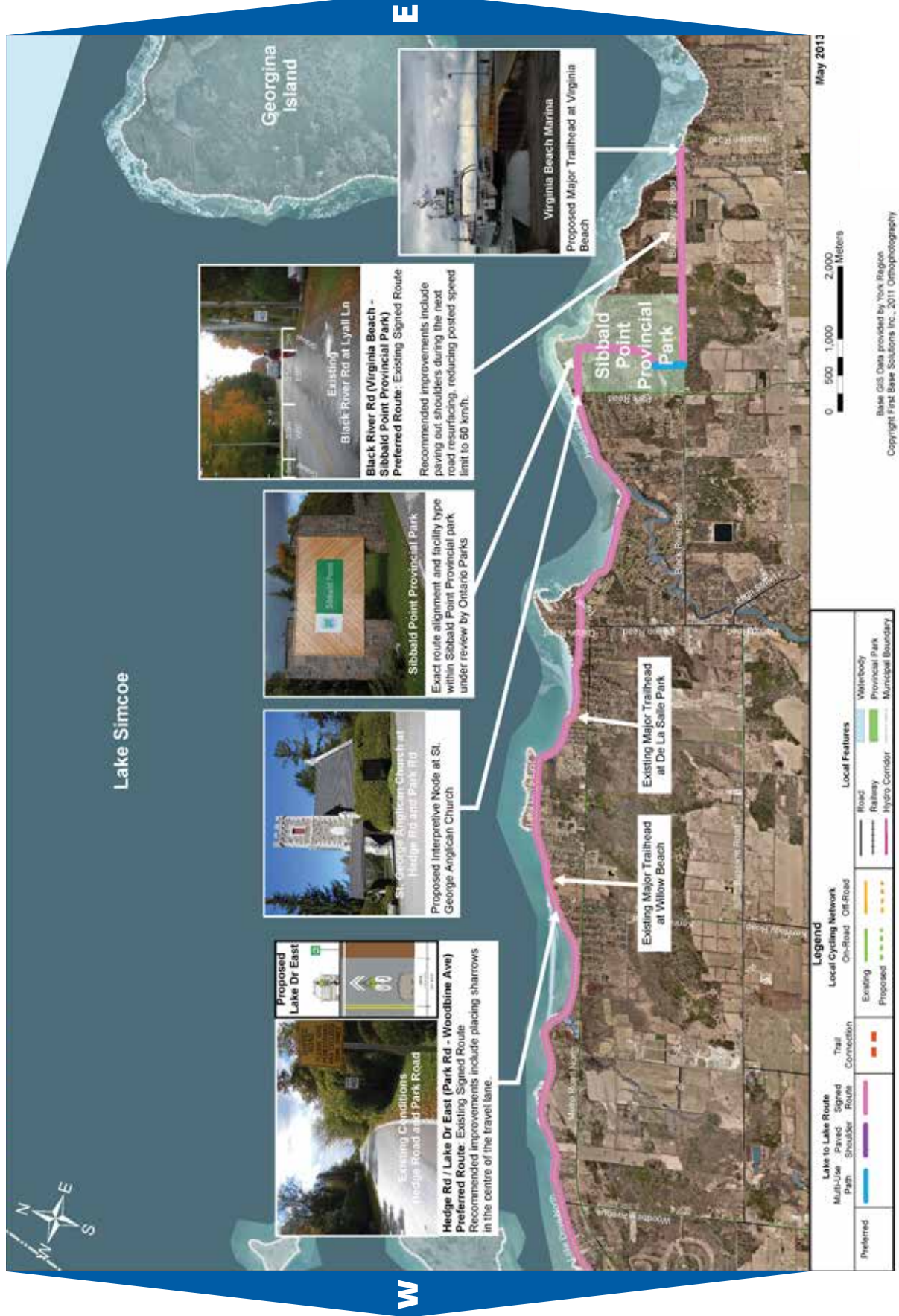
Field Evaluations

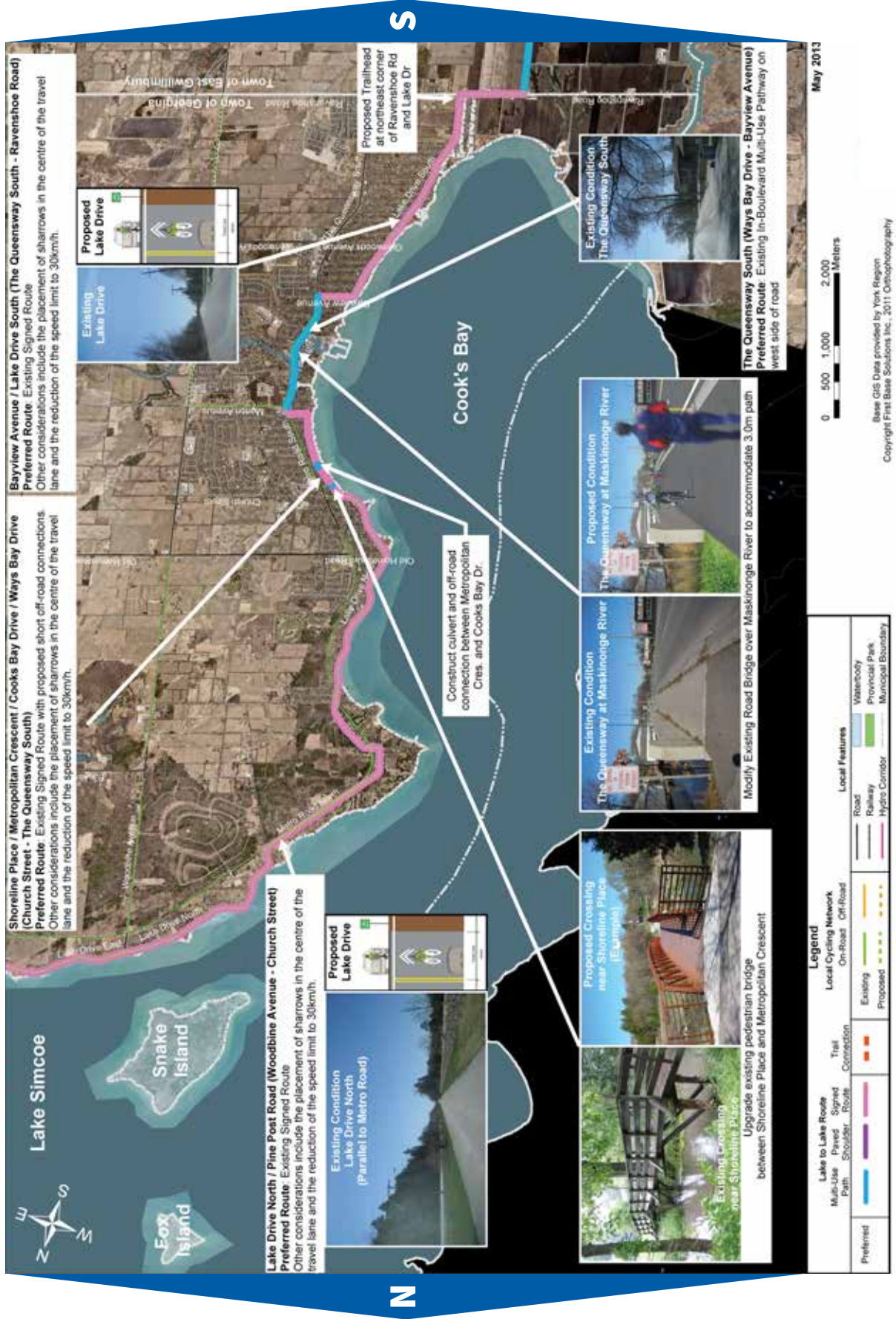
The preferred Lake to Lake Cycling Route and Walking Trail is based on route selection criteria, a detailed field evaluation of the route followed by the completion of a design feasibility assessment.

Maps (three to nine) illustrate the preferred Lake to Lake Cycling Route and Walking Trail and proposed facility types by Municipality in York Region.

Lake to Lake Cycling Route and Walking Trail - Preferred Route by Phase







Lake to Lake Cycling Route Design - East Gwillimbury map five

