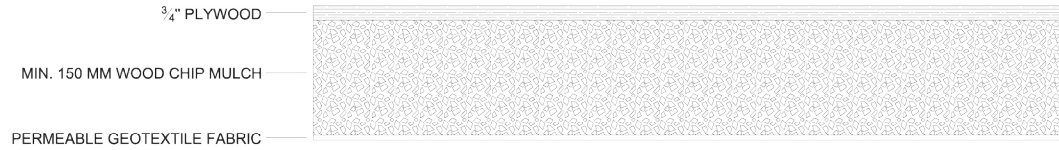


### LIGHT ROOT ZONE COMPACTION PROTECTION

LIGHT ROOT ZONE COMPACTION PROTECTION SHALL BE IMPLEMENTED WHERE LIMITED NON-VEHICULAR ACCESS IN THE TPZ IS ANTICIPATED (E.G., OCCASIONAL FOOT TRAFFIC, WHEELBARROW).



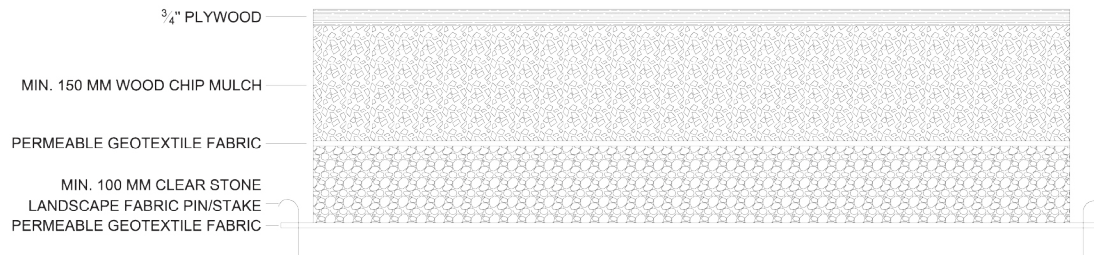
### MODERATE ROOT ZONE COMPACTION PROTECTION

MODERATE ROOT ZONE COMPACTION PROTECTION SHALL BE IMPLEMENTED WHERE MORE FREQUENT NON-VEHICULAR ACCESS OR OCCASIONAL LIGHT VEHICLE (E.G., PICKUP TRUCK) ACCESS ACROSS THE TPZ IS ANTICIPATED.

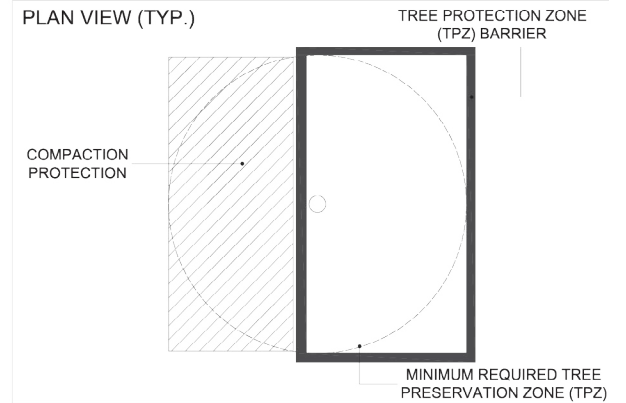


### HEAVY ROOT ZONE COMPACTION PROTECTION

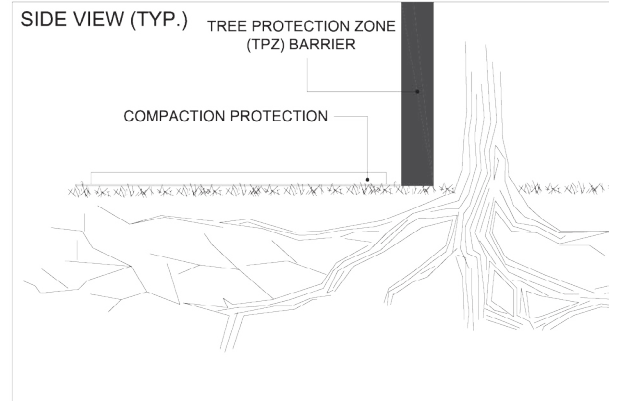
HEAVY ROOT ZONE COMPACTION PROTECTION SHALL BE IMPLEMENTED IN AREAS WHERE REGULAR VEHICLE ACCESS OR SIMILAR IMPACTS ARE ANTICIPATED IN THE TPZ.



PLAN VIEW (TYP.)



SIDE VIEW (TYP.)



**Environmental  
Services**

## ROOT ZONE COMPACTION PROTECTION

DATE:

SCALE N.T.S.

REV.

**NHF-404**