

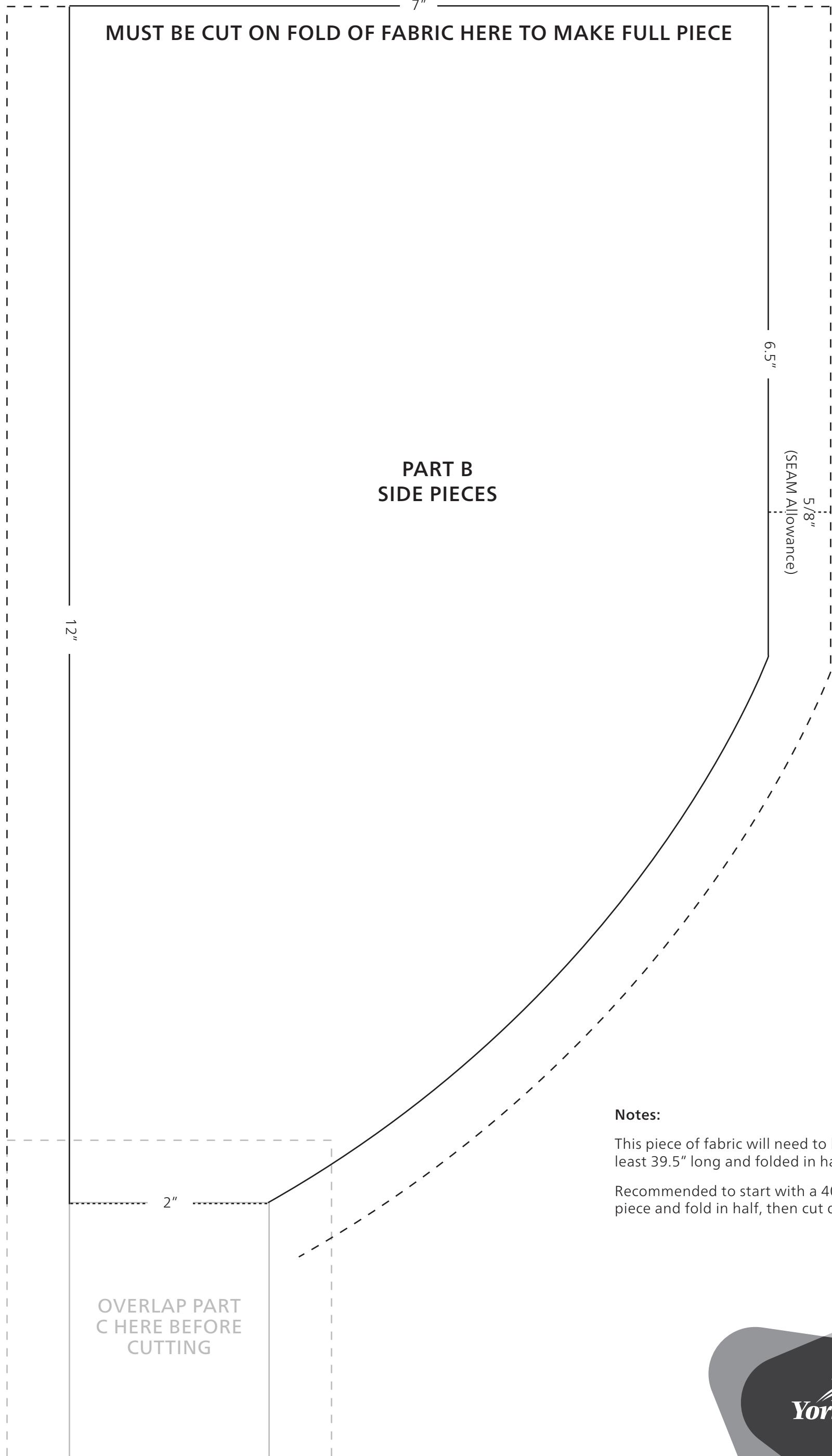
# DIY SCRUB CAP

**Materials:**

- 1/2 yard cotton fabric
- Large sheet of paper, thread, fabric pins, scissors
- 2" (length) elastic and small safety pin (optional)
- Sewing machine, iron

MUST BE CUT ON FOLD OF FABRIC HERE TO MAKE FULL PIECE

MUST BE CUT ON FOLD OF FABRIC HERE TO MAKE FULL PIECE



PART B  
SIDE PIECES

**Notes:**

- This piece of fabric will need to be at least 39.5" long and folded in half
- Recommended to start with a 40" x 8" piece and fold in half, then cut down

OVERLAP PART  
C HERE BEFORE  
CUTTING

**Notes:**

Print at 100% on an 11" x 17" paper  
(tabloid in portrait)

This is a size large. Pattern will need  
to be scaled down for smaller sizes.

Wash and dry all fabric  
before starting

