

# 2016-2018 Regional Budget

Presentation to Council

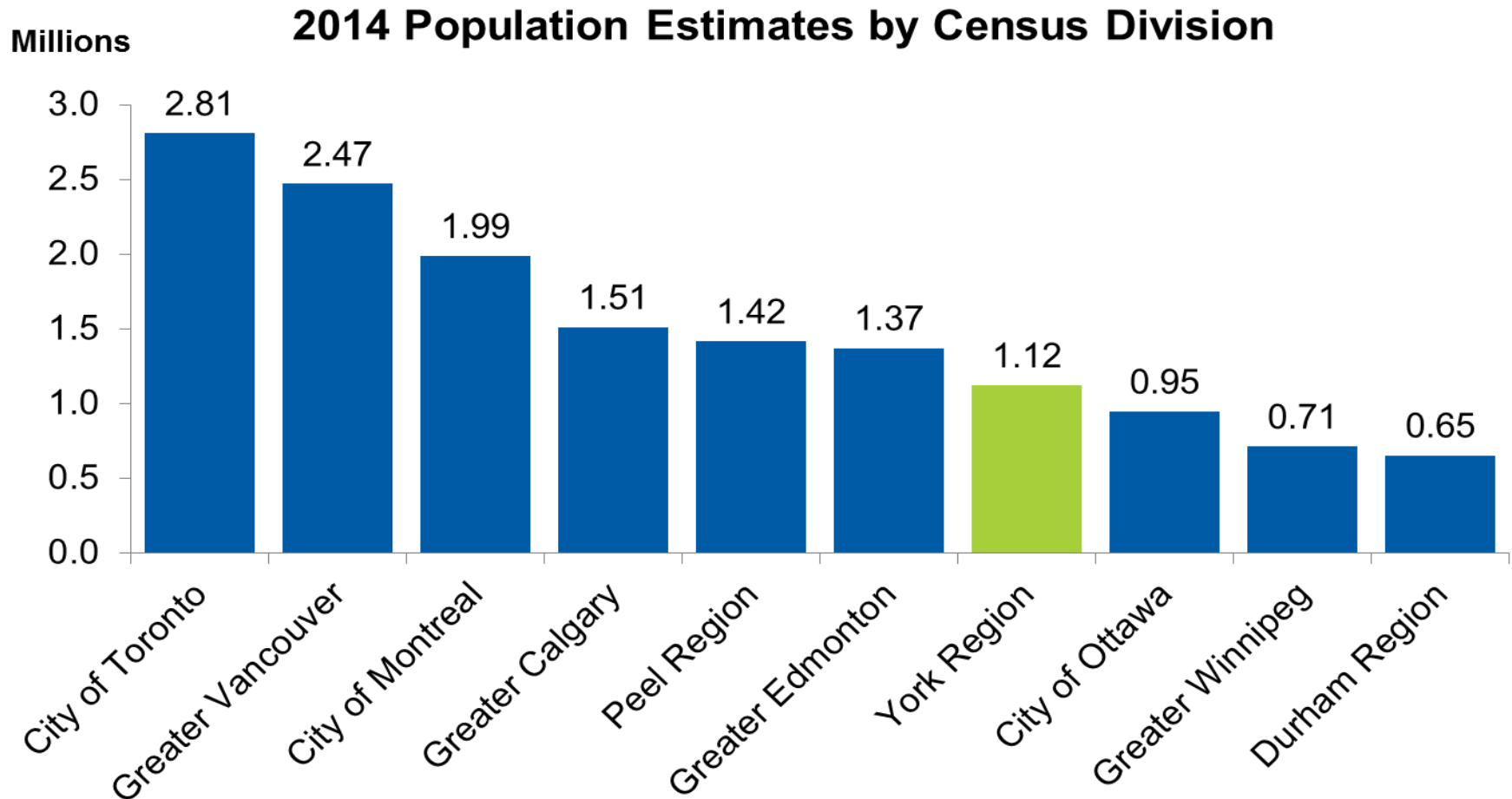
**Bill Hughes**

December 17, 2015



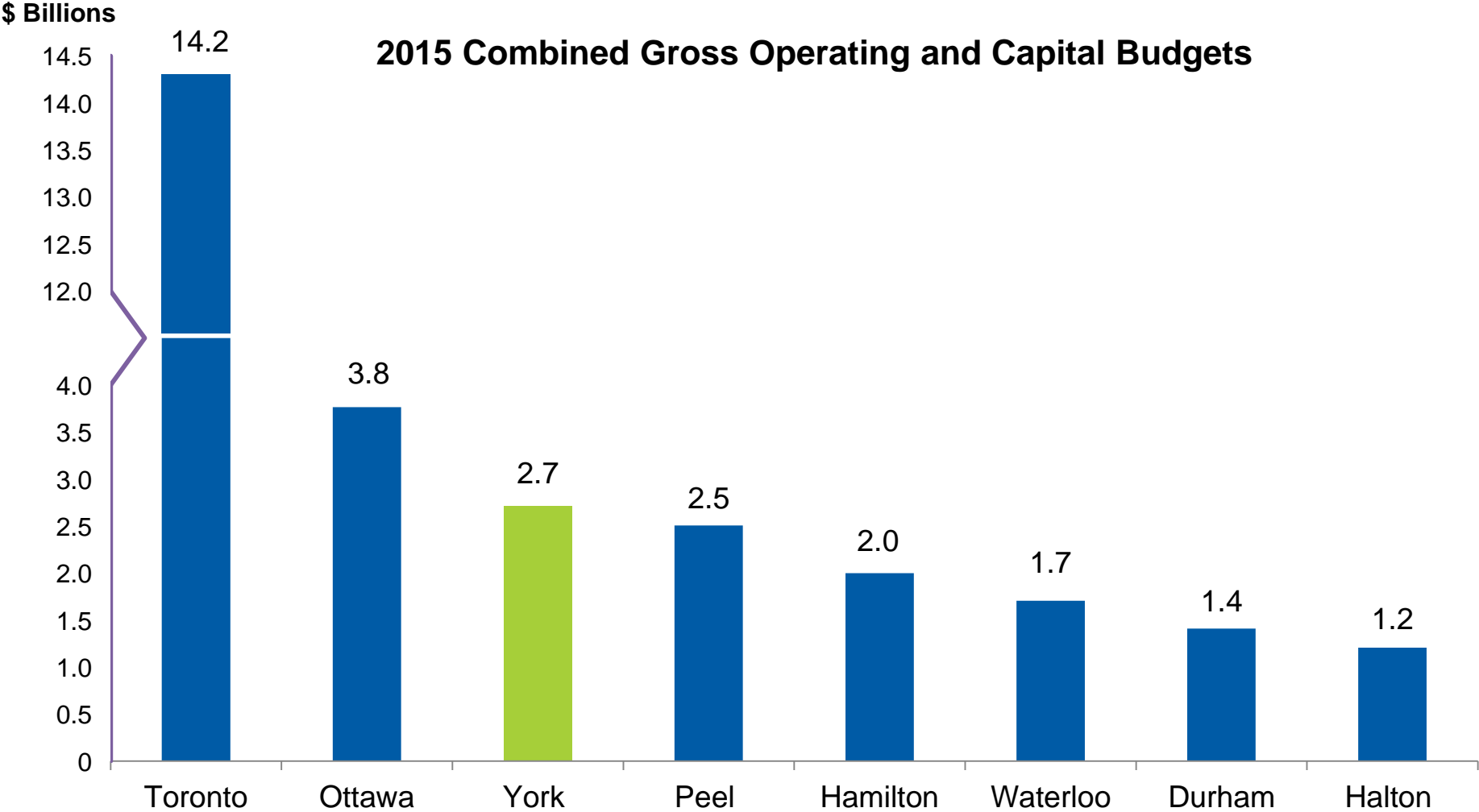
# York Region has the seventh largest population in Canada

---



Source: Statistics Canada intercensal Update (February 11, 2015)

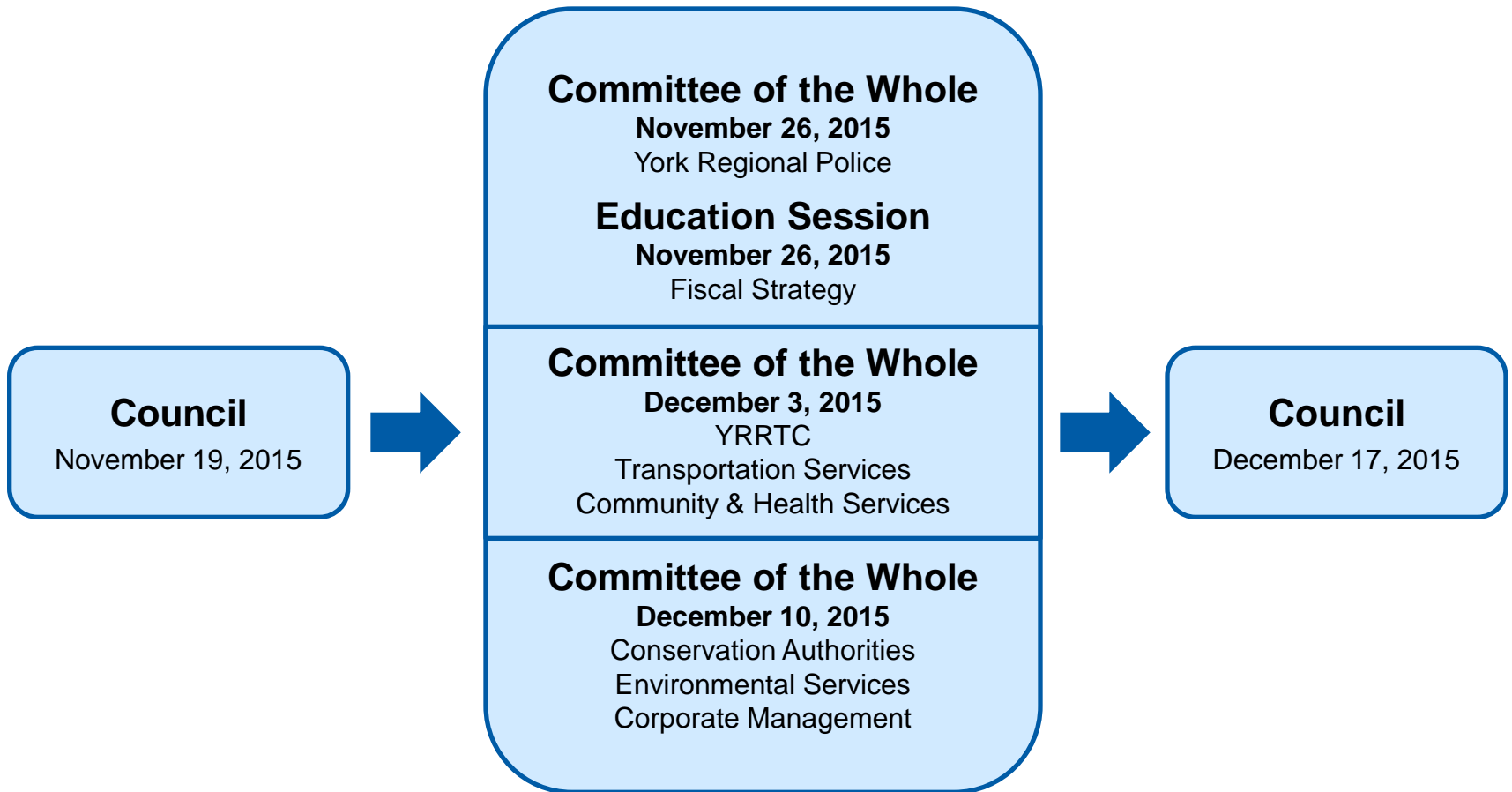
# York's 2015 combined gross operating and capital budget is third largest in Ontario



Figures reflect 2015 approved budgets

# Council / Committee Review Process

---



# The proposed tax increases at a glance



---

<b>Budget Year</b>	<b>2015</b>	<b>2016</b>	<b>2017</b>	<b>2018</b>
Approved 2015	2.97%	2.85%	2.69%	2.35%
Proposed 2016		2.85%	2.69%	2.35%

Proposed tax increases are consistent with the approved outlook

# The proposed budget at a glance

---

	<b>2015</b>	<b>2016</b>
Operating Budget	\$1.9B	\$2.0B
Capital Budget	\$826M	\$783M
Ten-Year Capital Plan	\$5.8B	\$6.1B
Capital plan compliant with the Province's Annual Repayment Limit regulation increase		

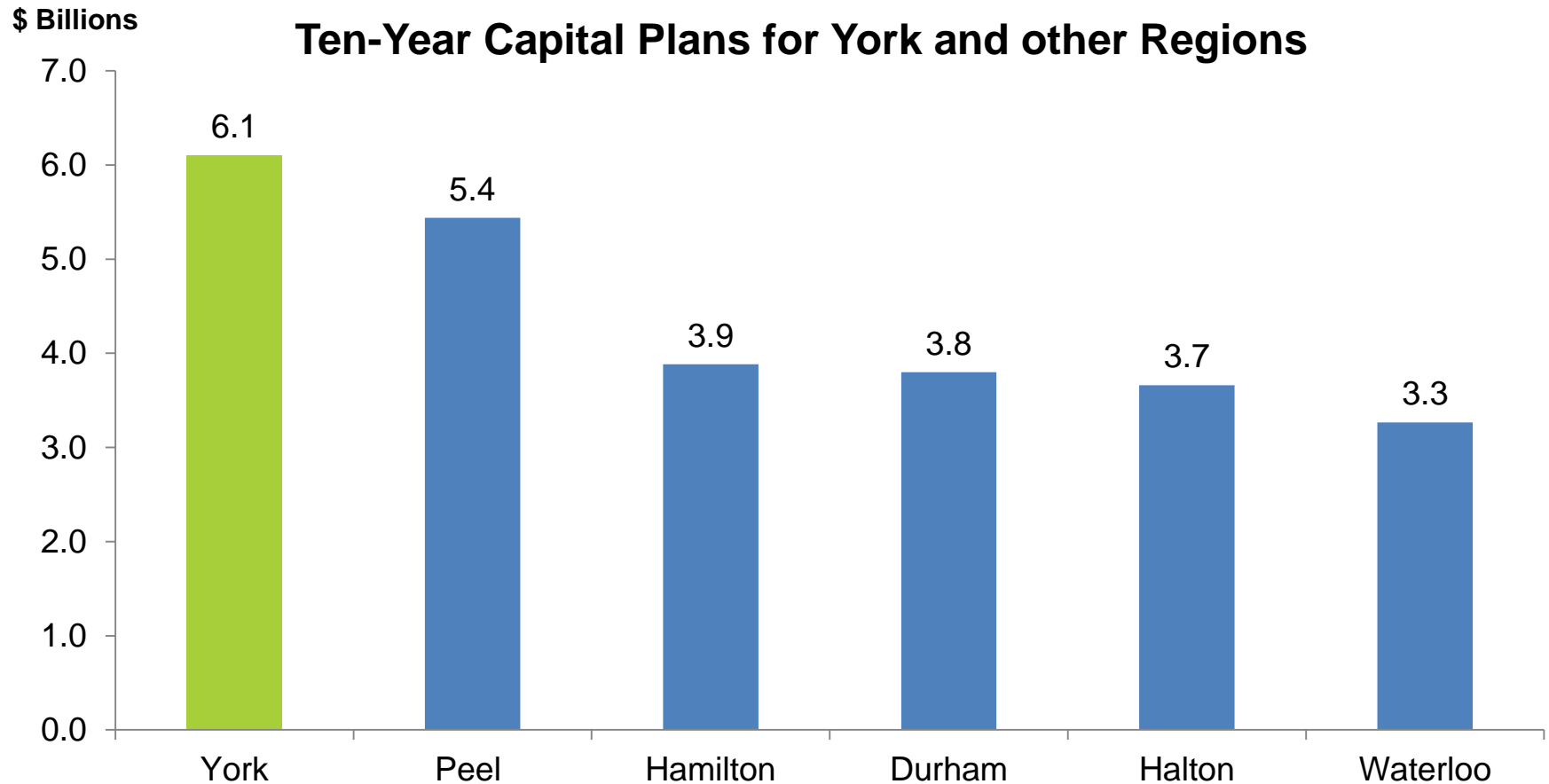
# New initiatives in the next three years

---

- ❑ Adding 52 new lane kilometers of road
- ❑ Continued implementation of the vivaNext bus rapid transit services on the new rapidways
- ❑ More investment in rehabilitation of water and wastewater infrastructure
- ❑ Two transitional / emergency housing facilities
- ❑ 52 new paramedics and investment in paramedic response stations
- ❑ 49 new police officers and 17 civilian staff

# York's ten-year capital plan is largest among comparable municipalities

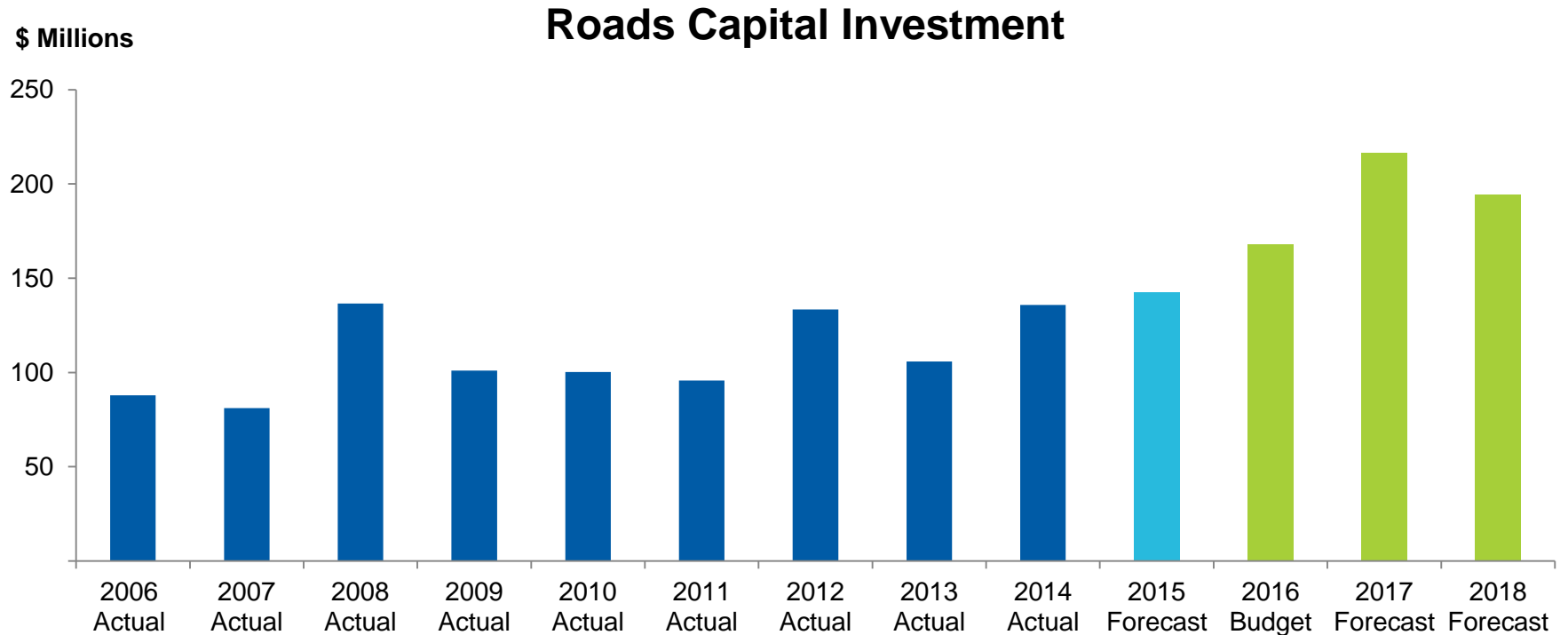
---



Figures reflect Ten-Year Capital Plans proposed in 2016, except Durham, which is the 2015 Ten-Year Plan



# Record levels of roads investment

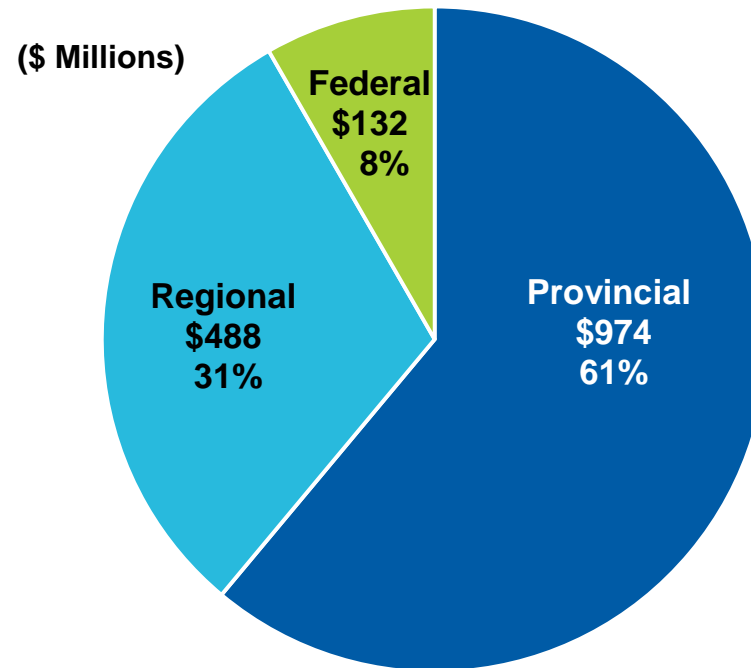


The budget includes \$721 million for roads capital from 2015-2018

# Large transit investment under way

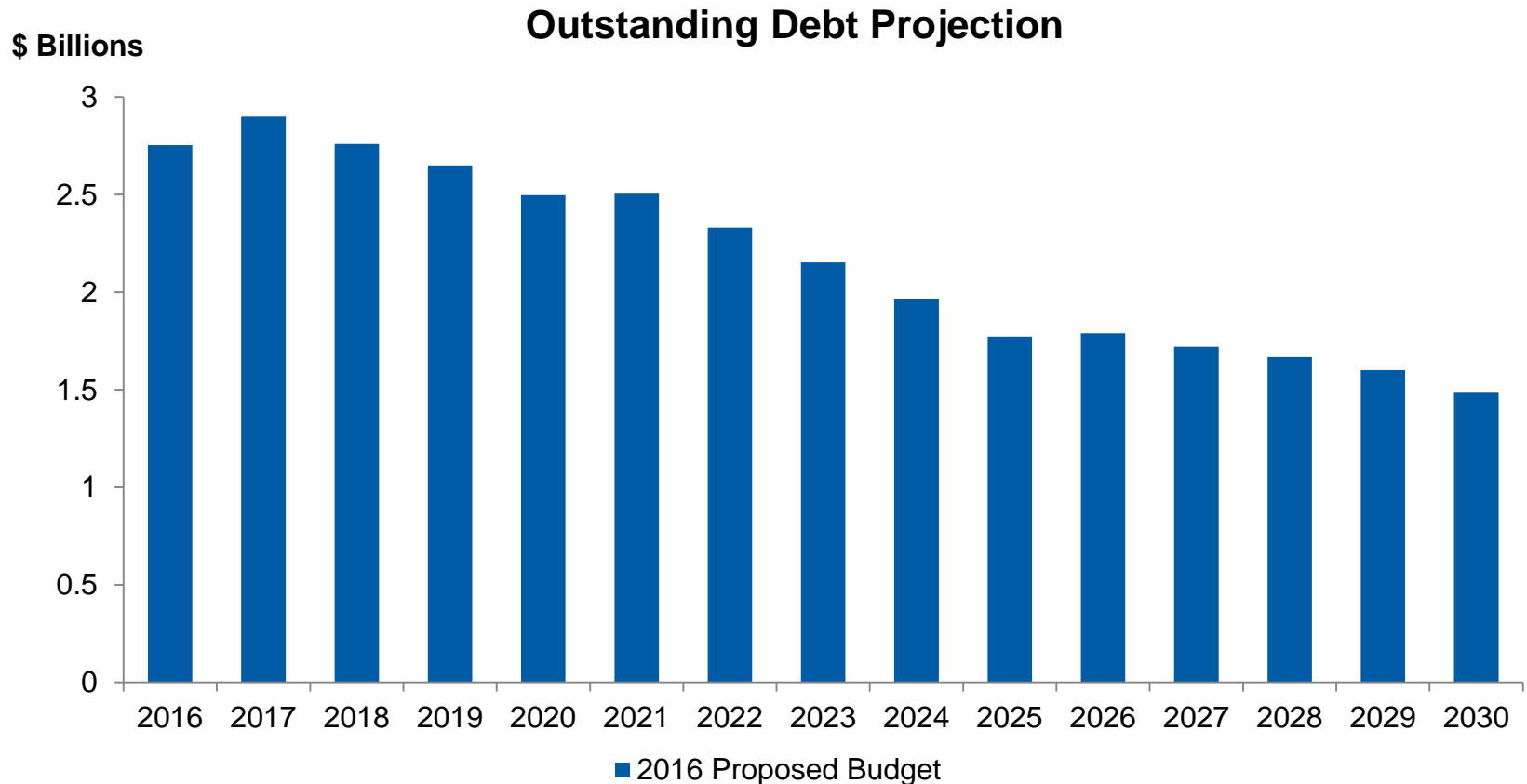
---

## 2016-2020 Transit Investments total \$1.6 Billion



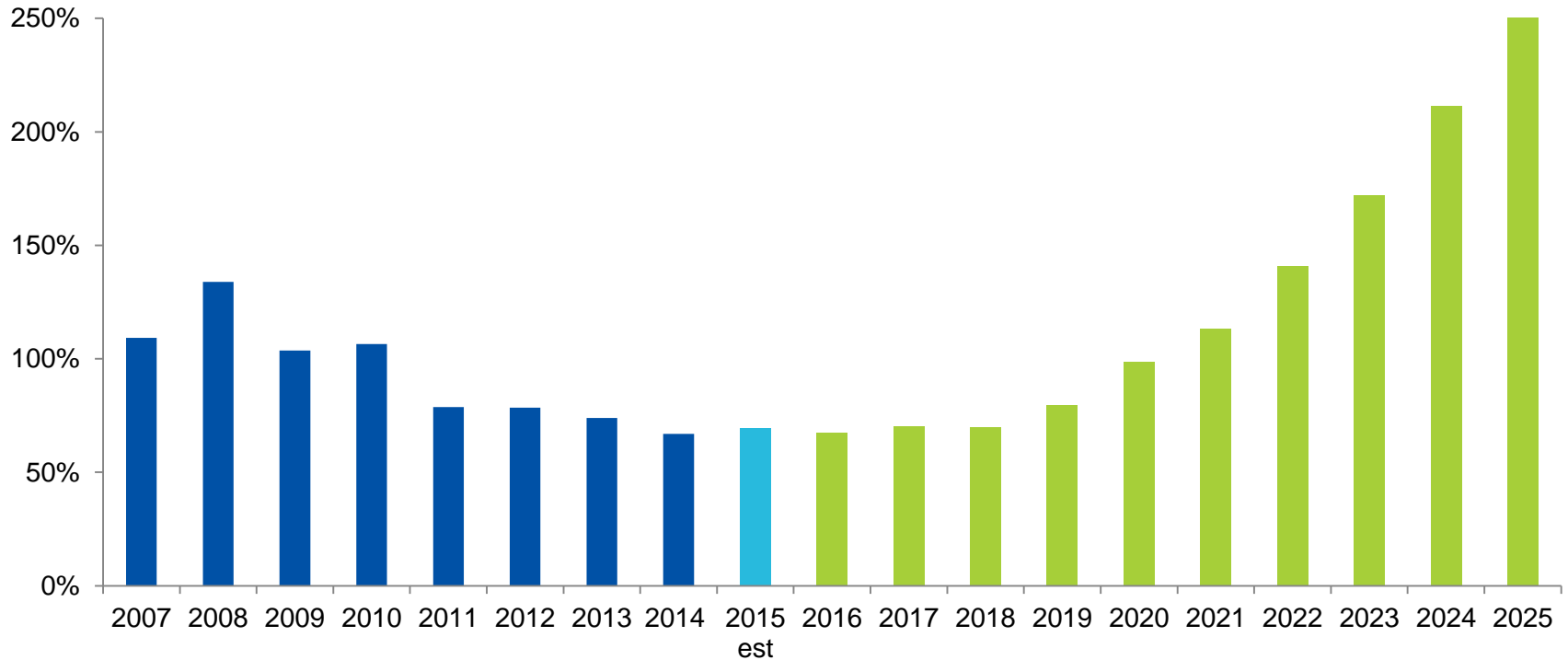
In the last 5 years, total transit investment in the Region has been \$1.8 billion

# Fiscal strategy continues to reduce debt levels



Debt peaks at \$2.9 billion in 2017 and then declines

# Reserve to debt ratio will improve



The reserve to debt ratio is forecast to increase in 2017 and exceed 100% by 2021

# Summary of the 2016 budget

---

- ❑ Second year of a multi-year budget that aligns with the term of Council and the Strategic Plan
- ❑ A robust capital plan
- ❑ Lower debt levels and higher reserve balances
- ❑ No tax levy debt in next ten years
- ❑ No rate-supported debt in the next ten years
- ❑ Proposed 2016 tax increase of 2.85% and outlooks of 2.69% in 2017 and 2.35% in 2018



**ECONOMIC  
VITALITY**



**HEALTHY  
COMMUNITIES**



**SUSTAINABLE  
ENVIRONMENT**



**GOOD  
GOVERNMENT**

# Tax impact on homeowner

The average assessed value of a residential property in the Region is \$547,000. A tax levy increase of 2.85% in 2016 equates to \$63 per household, on average.

